

PRODUCT INFORMATION PACKET



Model No: H279ES
Catalog No: H279ES
General Purpose Motor, .50 HP, 3 Ph, 60 Hz, 230/460 V, 1200 RPM, 56 Frame, ODP



Regal and Century are trademarks of Regal Rexnord Corporation or one of its affiliated companies.
©2022 Regal Rexnord Corporation, All Rights Reserved. MC017097E





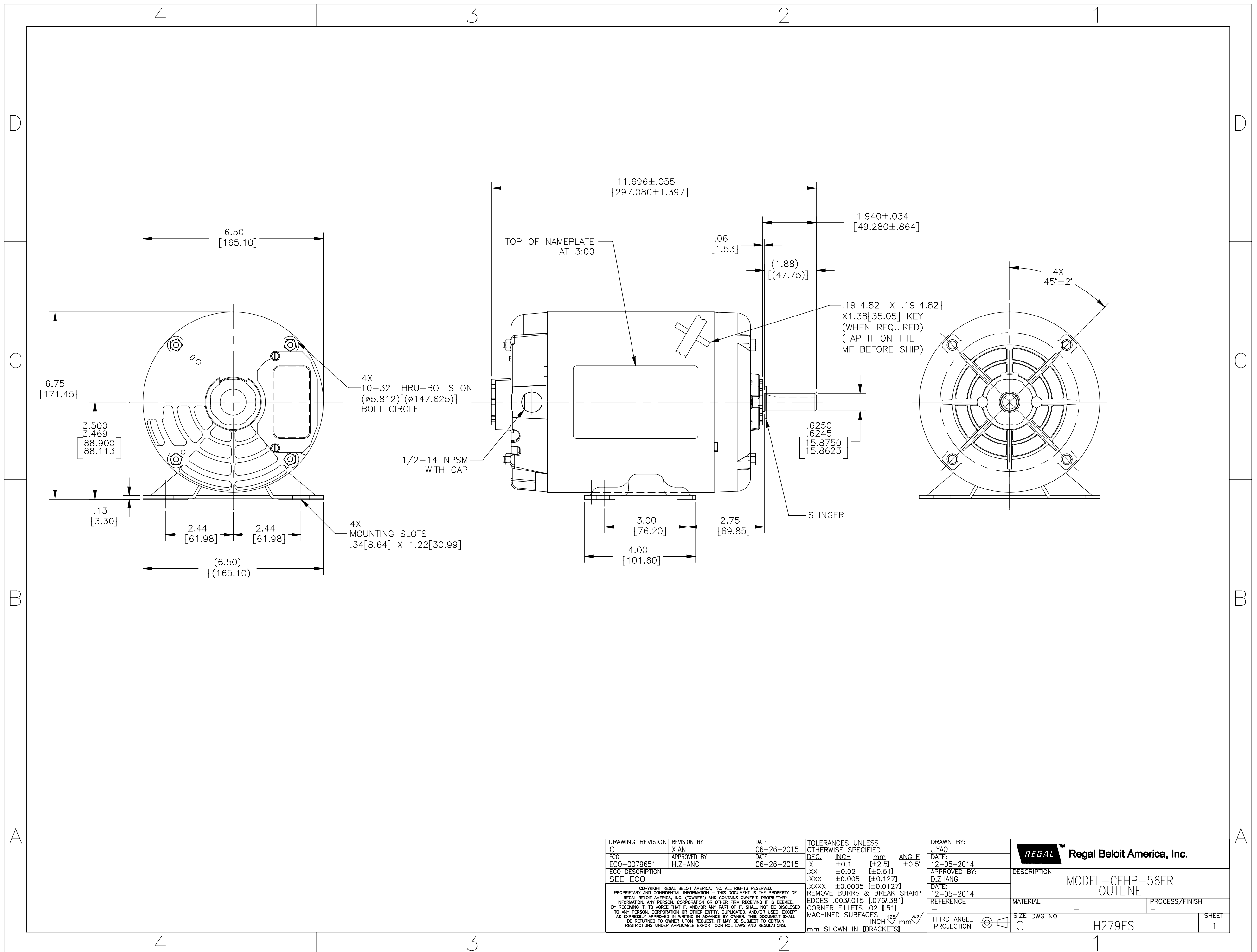
Nameplate Specifications

| | | | |
|--------------------|---------------|---------------------|-----------------|
| Output HP | .50 Hp | Output KW | 0.37 kW |
| Frequency | 60 Hz | Voltage | 230/460 V |
| Current | 1.9/.95 A | Speed | 1140 rpm |
| Service Factor | 1.25 | Phase | 3 |
| Duty | Continuous | Insulation Class | B |
| Frame | 56 | Enclosure | Open Drip Proof |
| Thermal Protection | No Protection | Ambient Temperature | 40 °C |
| UL | Recognized | CSA | Y |
| CE | Y | Number of Speeds | 1 |

Technical Specifications

| | | | |
|-----------------------|--------------|-------------------|----------------------------|
| Electrical Type | Polyphase | Starting Method | Across The Line |
| Poles | 6 | Rotation | Clockwise/Counterclockwise |
| Mounting | Rigid Base | Drive End Bearing | Ball |
| Opp Drive End Bearing | Ball | Frame Material | Rolled Steel |
| Shaft Type | Keyed | Overall Length | 11.70 in |
| Frame Length | 6.25 in | Shaft Diameter | 0.625 in |
| Shaft Extension | 1.94 in | | |
| Connection Drawing | D0000283-001 | Outline Drawing | H279ES-S01 |

This is an uncontrolled document once printed or downloaded and is subject to change without notice. Date Created:11/29/2022



| | | | | | | | | |
|---|------------------------|--------------------|---|--------------------------|---------|--------------------|-----------------------------------|---------------------|
| DRAWING REVISION C | REVISION BY X.AN | DATE 06-26-2015 | TOLERANCES UNLESS OTHERWISE SPECIFIED | | | DRAWN BY: J.YAO | Regal Beloit America, Inc. | |
| ECO ECO-0079651 | APPROVED BY H.ZHANG | DATE 06-26-2015 | DEC. | INCH | mm | ANGLE | | DATE: 12-05-2014 |
| ECO DESCRIPTION SEE ECO | | | .X | ±0.1 | ±2.5 | ±0.5° | APPROVED BY: D.ZHANG | |
| <small>COPYRIGHT REGAL BELOIT AMERICA, INC. ALL RIGHTS RESERVED. PROPRIETARY AND CONFIDENTIAL INFORMATION - THIS DOCUMENT IS THE PROPERTY OF REGAL BELOIT AMERICA, INC. (OWNERS) AND CONTAINS OWNERS PROPRIETARY INFORMATION. ANY PERSON, CORPORATION OR OTHER FIRM RECEIVING IT IS DEEMED, BY RECEIVING IT, TO AGREE THAT IT, AND/OR ANY PART OF IT, SHALL NOT BE DISCLOSED TO ANY PERSON, CORPORATION OR OTHER ENTITY, DUPLICATED, AND/OR USED, EXCEPT AS EXPRESSLY APPROVED IN WRITING IN ADVANCE BY OWNER. THIS DOCUMENT SHALL BE RETURNED TO OWNER UPON REQUEST. IT MAY BE SUBJECT TO CERTAIN RESTRICTIONS UNDER APPLICABLE EXPORT CONTROL LAWS AND REGULATIONS.</small> | | | .XX | ±0.02 | ±0.51 | | DATE: 12-05-2014 | |
| | | | .XXX | ±0.005 | ±0.127 | | REFERENCE | |
| | | | .XXXX | ±0.0005 | ±0.0127 | | MATERIAL | PROCESS/FINISH |
| | | | | | | | SIZE | DWG NO |
| | | | REMOVE BURRS & BREAK SHARP EDGES .003/.015 [0.076/.381] | CORNER FILLETS .02 [.51] | | | | |
| | | | MACHINED SURFACES 125/INCH 3.2/mm | mm SHOWN IN [BRACKETS] | | | | |
| | | | | THIRD ANGLE PROJECTION | | | | |
| | | | | C | | | H279ES | |
| | | | | | | | 1 | |

4

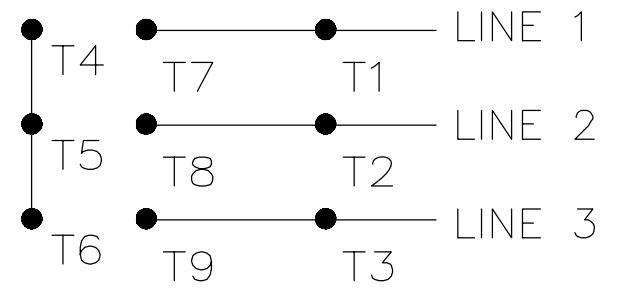
3

2

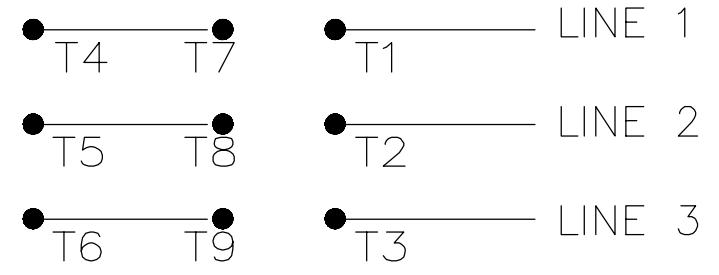
1

| | | | | | |
|-----|---------|----------|------------|----------|------------|
| REV | ECO | REV BY | DATE | APPD | DATE |
| A | 0016784 | R.RASCON | 10-12-2010 | D.JUAREZ | 10-12-2010 |

LOW VOLTAGE



HIGH VOLTAGE



TO REVERSE ROTATION FOR EITHER VOLTAGE, INTERCHANGE ANY 2 LINE LEADS

NOTES:

1. DATTED BOX REPRESENTS TOTAL PRINTED AREA ALLOWED FOR CONNECTION DIAGRAM TO FIT IN (.75[19.1] X 2.13[54.1]) SEE NAMEPLATE DRAWING 170500 OR 170501 FOR LOCATION.
2. CHARACTERS ARE TO BE A MINIMUM OF .03[.8] TO .06[1.5] MAXIMUM IN HEIGHT.
3. DETAILS ARE NOT TO BE COPIED FROM DRAWING, BUT ARE TO BE REPRODUCED FROM ORIGINAL ARTWORK FURNISHED.

GEOMETRIC CHARACTERISTICS & SYMBOLS

- ▧ FLATNESS
- STRAIGHTNESS
- ∠ ANGULARITY
- ⊥ PERPENDICULARITY (SQUARENESS)
- // PARALLELISM
- ROUNDNESS (CIRCULARITY)
- ⊘ CYLINDRICITY
- △ PROFILE OF ANY SURFACE
- ∩ PROFILE OF ANY LINE
- ↗ RUNOUT
- ⊕ TRUE POSITION
- ◎ CONCENTRICITY
- ≡ SYMMETRY

UNLESS OTHERWISE SPECIFIED
DIM. TOLERANCES ARE AS FOLLOWS:

| | | | | |
|------|------|-------|--------|--------|
| | X | XX | XXX | XXXX |
| INCH | ±.1 | ±.02 | ±.005 | ±.0005 |
| mm | ±0.5 | ±0.13 | ±0.013 | |

ANG. ±.50 DEG
REMOVE BURRS & BREAK SHARP EDGES:
INCH .003-.015 mm 0.1-0.4
CORNER FILLETS TO:
INCH .020 mm 0.5
MACHINE SURFACES:
INCH 125 mm 3.2

METRIC DIMS. SHOWN IN [BRACKETS]

| | | |
|---|----------|-------------------------------------|
| DR BY: | R.RASCON | 10-12-2010 |
| APPD: | D.JUAREZ | 10-12-2010 |
| THIRD ANGLE PROJECTION | | EDS DATE 02-22-2008 FORMAT REV F |
| CONFIDENTIAL: THIS DRAWING AND ITS INFORMATION ARE THE EXCLUSIVE AND CONFIDENTIAL PROPERTY OF A.O. SMITH CORP. AND ARE NOT TO BE DISCLOSED, DUPLICATED, DISTRIBUTED OR OTHERWISE USED WITHOUT THE WRITTEN CONSENT OF A.O. SMITH CORP. -ALL RIGHTS RESERVED. ASME Y14.5M 1994 | | |

| | | | |
|---------------------------------------|------------------------|--|------------|
| | | ELECTRICAL PRODUCTS COMPANY <small>A DIVISION OF A. O. SMITH CORPORATION</small> | |
| DESCRIPTION CONN DIAGRAM-NAMEPLATE | | | |
| SIZE B | DWG NO D0000283-001 | | |
| SCALE NONE | | | SHEET 1 |

4

3

2

1

4

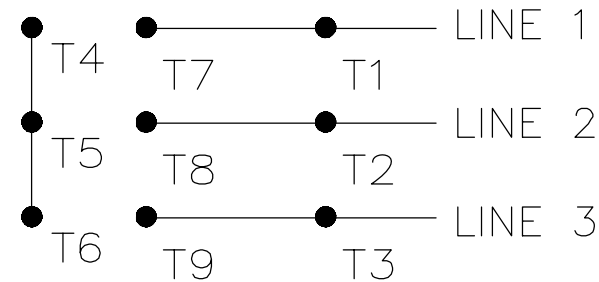
3

2

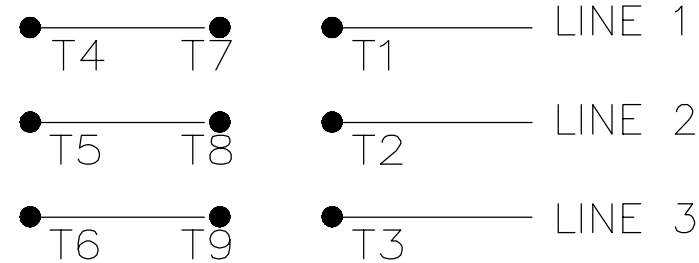
1

| | | | | | |
|-----------|---------|---------------|------------|---------------|------------|
| REVISION: | ECO | REVISADO POR: | FECHA: | APROBADO POR: | FECHA: |
| A | 0016784 | R.RASCON | 10-12-2010 | D.JUAREZ | 10-12-2010 |

LOW VOLTAGE



HIGH VOLTAGE



TO REVERSE ROTATION FOR EITHER VOLTAGE, INTERCHANGE ANY 2 LINE LEADS

NOTAS:

1. LA CAJA PUNTEADA REPRESENTA EL TOTAL DEL AREA IMPRESA TOTAL PERMITIDA PARA UN DIAGRAMA DE CONEXION PA5A ANCAJAR EN (.75[19.1] X 2.13 [54.1]) VER EL DIBUJO DE LA PLACA DE IDENTIFICACION 170500 O 170501 PARA LOCALIZACION.
2. LOS CARACTERES DEBEN SER DE UN MINIMO DE ALTURA DE .03[.8] A UN MAXIMO DE .06[1.5].
3. LOS DETALLES NO DEBEN SER COPIADOS DEL DIBUJO, SINO DEBEN SER REPRODUCIDOS DE LAS ILUSTRACIONES ORIGINALES EQUIPADAS.

CARACTERISTICAS DE GEOMETRIA Y SIMBOLOS

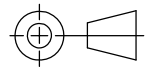
- ∇ PLANICIDAD
- RECTITUD
- ∠ ANGULARIDAD
- ⊥ PERPENDICULARIDAD (A ESCUADRA)
- // PARALELISMO
- REDONDEZ (CIRCULARIDAD)
- ⊘ CILINDRICIDAD
- ⌒ PERFIL DE CUALQUIER SUPERFICIE
- ⌒ PERFIL DE CUALQUIER LINEA
- ↑ VARIACION
- ⊕ POSICION REAL
- ⊙ CONCENTRICIDAD
- ≡ SIMETRIA

A MENOS QUE SE ESPECIFIQUE DE OTRA MANERA, LAS TOLERANCIAS DE LAS DIMS; SON LAS SIGUIENTES:

| | | | | |
|------|------|-------|--------|--------|
| PULG | ±.1 | ±.02 | ±.005 | ±.0005 |
| mm | ±0.5 | ±0.13 | ±0.013 | |

ANG. ±.50 GRADOS
 ELIMINAR REBABAS Y ORILLAS FILOSAS DEL BORDE.
 PULG .003-.015 mm 0.1-0.4
 FILETEAR ESQUINA: PULG .020 mm 0.5
 MAQUINAR SUPERFICIES
 PULG 125 mm 3.2

DIMS METRICAS MOSTRADAS [PARENTESIS]

| | |
|--|--|
| DIBUJADO POR: R.RASCON | 10-12-2010 |
| APROBADO POR: D.JUAREZ | 10-12-2010 |
| TERCER ANGULO DE PROYECCION |  FECHA EDS: 02-22-2008 REV. FORMATO: F |
| CONFIDENCIAL: ESTE DIBUJO Y SU INFORMACION SON PROPIEDAD DE USO EXCLUSIVO Y CONFIDENCIAL DE A.O.SMITH CORP. Y NO DEBERAN SER REVELADOS, DUPLICADOS, DISTRIBUIDOS O USARSE DE OTRA MANERA SIN EL CONSENTIMIENTO ESCRITO DE A.O. SMITH CORP. -TODOS LOS DERECHOS RESERVADOS.ASME Y14.5M 1994 | |



ELECTRICAL PRODUCTS COMPANY

A DIVISION OF A. O. SMITH CORPORATION

| | |
|--|--------------------------------|
| DESCRIPCION: CONN DIAGRAM-NAMEPLATE | |
| TAMAÑO: B | NUMERO DE DIBUJO: D0000283-001 |
| ESCALA: NONE | HOJA: 1 |

4

3

2

1

4

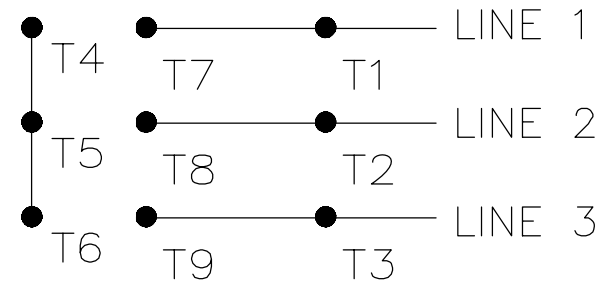
3

2

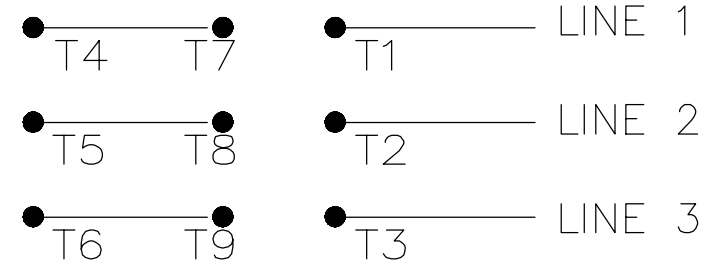
1

| | | | | | |
|----|---------|----------|------------|----------|------------|
| 版本 | ECO | 编制 | 日期 | 批准 | 日期 |
| A | 0016784 | R.RASCON | 10-12-2010 | D.JUAREZ | 10-12-2010 |

LOW VOLTAGE



HIGH VOLTAGE



TO REVERSE ROTATION FOR EITHER VOLTAGE, INTERCHANGE ANY 2 LINE LEADS

B

B

A


A

- 形位公差
- 平面度
- 直线度
- ∠ 倾斜度
- ⊥ 垂直度
- // 平行度
- 圆度
- ∅ 圆柱度
- △ 面轮廓度
- ∩ 线轮廓度
- ↗ 圆跳动
- ⊕ 位置度
- ◎ 同轴度
- ≡ 对称度

除另有注明
尺寸公差如下:

| | | | | |
|-------------|-------------|-------|------------|--------|
| | X | XX | XXX | XXXX |
| 英寸 | ±.1 | ±.02 | ±.005 | ±.0005 |
| 毫米 | ±0.5 | ±0.13 | ±0.013 | |
| 角度 | ±.50 度 | | | |
| 清理毛刺和尖棱 | | | | |
| 英寸 | .003-.015 | | 毫米 0.1-0.4 | |
| 内圆角 | | | | |
| 英寸 | .020 毫米 0.5 | | | |
| 表面粗糙度 | | | | |
| 英寸 | 125 | 米制 | 3.2 | |
| 米制尺寸显示在 [] | | | | |

| | | |
|--|----------|---------------------------------|
| 绘图: | R.RASCON | 10-12-2010 |
| 批准: | D.JUAREZ | 10-12-2010 |
| 第三角投影 | | 图纸格式发布日期 02-22-2008 图纸格式版本 F |
| 机密: 本图纸及相关信息所有权归A. O. SMITH公司所有。未经A. O. SMITH公司书面授权, 不得泄露、复制、传播或作其他用途。--版权所有 | | |
| ASME Y14.5M 1994 | | |



ELECTRICAL PRODUCTS COMPANY
A DIVISION OF A. O. SMITH CORPORATION

名称: CONN DIAGRAM-NAMEPLATE

| | |
|----------|------------------|
| 图幅: B | 图号: D0000283-001 |
| 比例: NONE | 页号: 1 |

4

3

2

1