

PRODUCT INFORMATION PACKET



Model No: H282

Catalog No: H282

Pool Pump Motor, 1/2 HP, 3 Ph, 60 Hz, 208-230/460 V, 3600 RPM, K56J Frame, DP



Regal and Century are trademarks of Regal Rexnord Corporation or one of its affiliated companies.

©2023 Regal Rexnord Corporation, All Rights Reserved. MC017097E





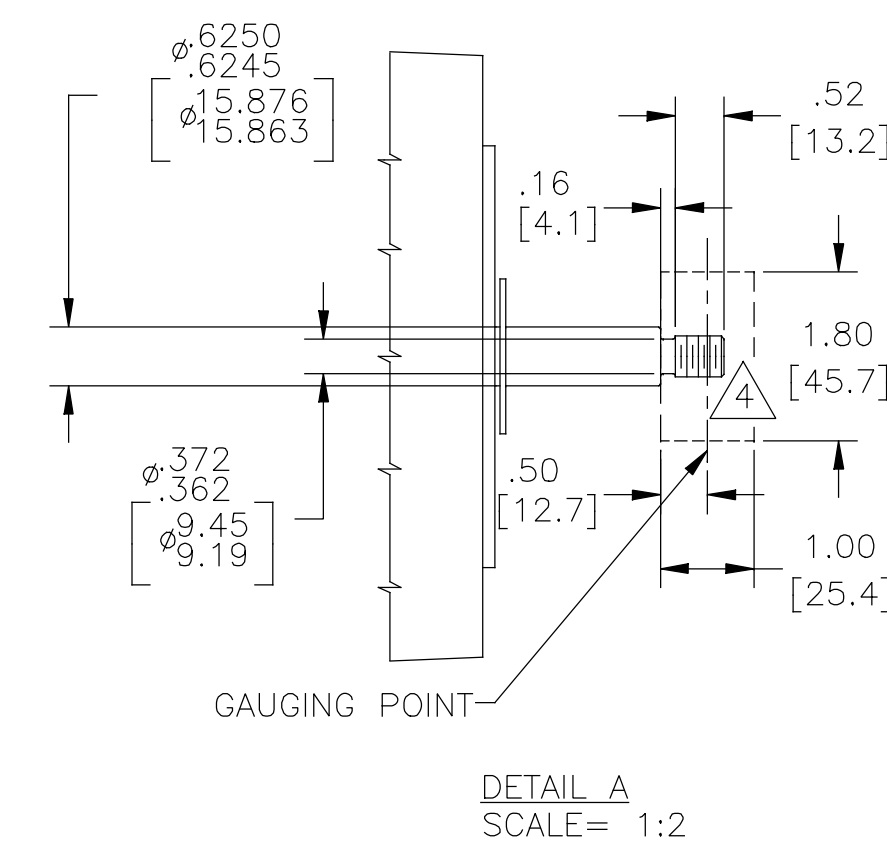
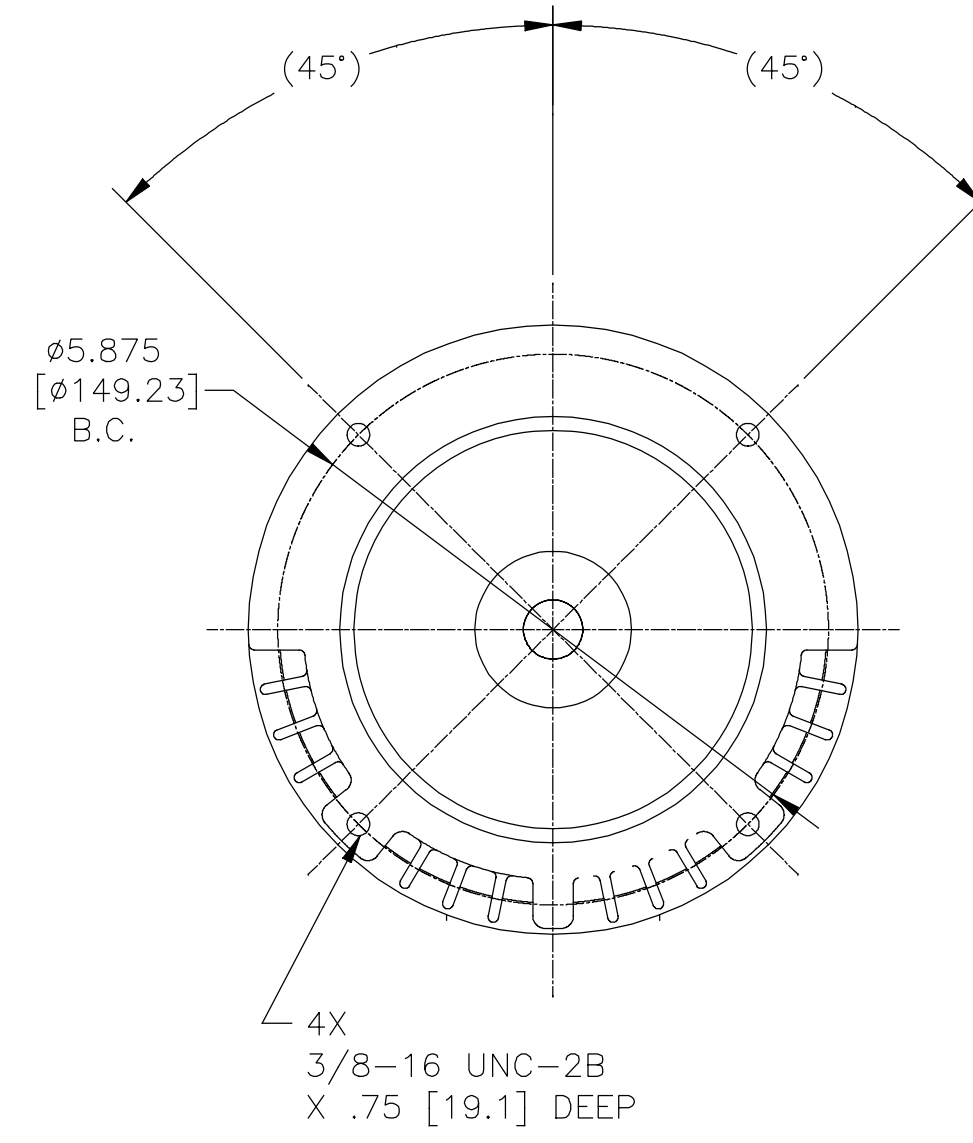
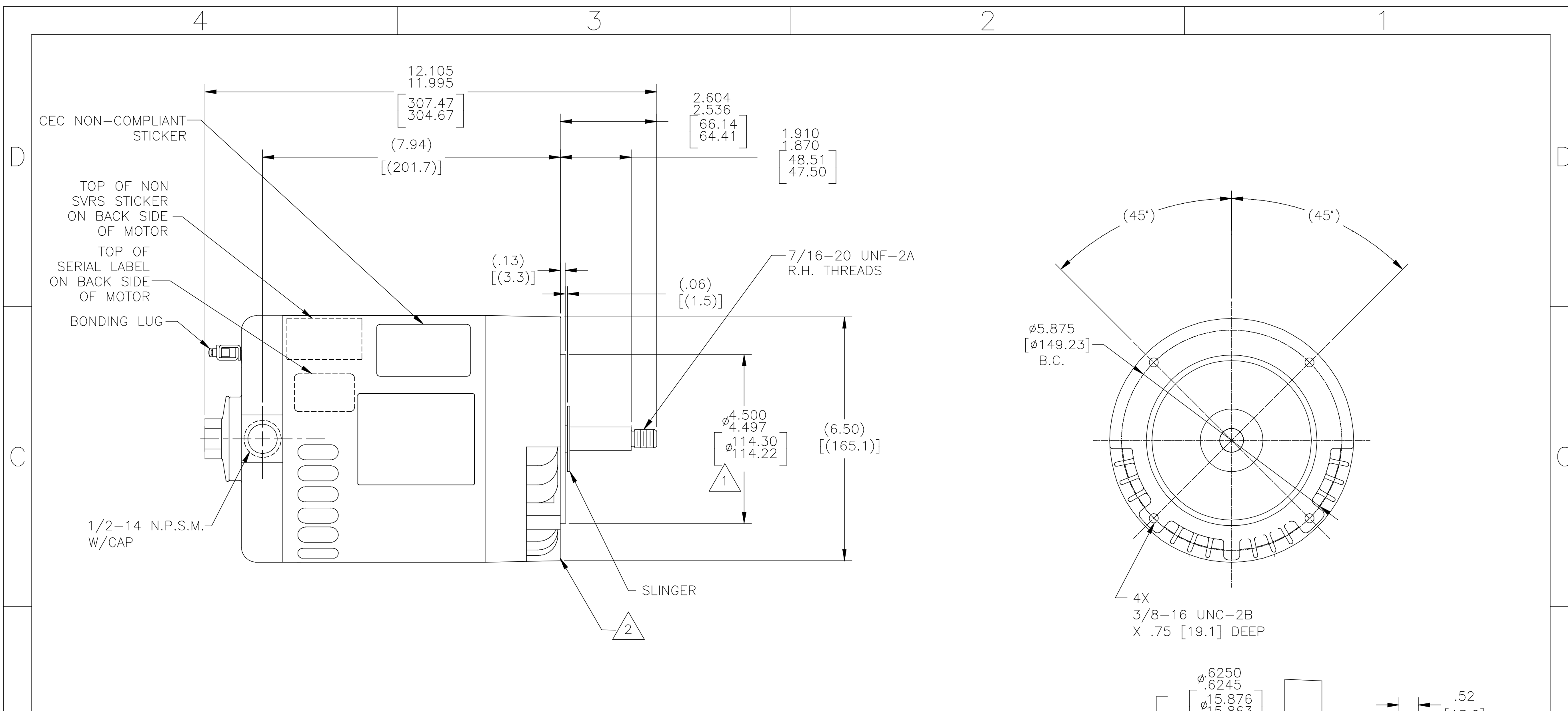
Nameplate Specifications

Phase	3	Output HP	1/2 Hp
Output KW	0.37 kW	Voltage	208-230/460 V
Speed	3450/2850 rpm	Service Factor	1.6
Frame	K56J	Enclosure	Drip Proof
Thermal Protection	No Protection	Ambient Temperature	40 °C
Frequency	60 Hz	Current	1.8-2.0/1.0 A
Duty	Continuous	Insulation Class	A
UL	Recognized	CSA	Y
Number of Speeds	1		

Technical Specifications

Electrical Type	Polyphase, Induction Type, Single Or Dual Voltage	Poles	2
Rotation	Reversible Counterclockwise	Mounting	Round
Motor Orientation	Horizontal	Drive End Bearing	Ball Brg
Opp Drive End Bearing	Ball	Frame Material	Rolled Steel
Shaft Type	7/16 Threaded	Overall Length	12.05 in
Frame Length	5.50 in	Shaft Diameter	0.625 in
Shaft Extension	2.57 in		
Outline Drawing	H282-S01	Connection Drawing	18304024.PCX

This is an uncontrolled document once printed or downloaded and is subject to change without notice. Date Created:05/11/2023



NAMEPLATE DATA	EXTERNAL CONNECTION DIAGRAM	NOTES
MODEL: 151768 CUST PN: H282 HP: 1/2 SF: 1.60 ROT: RCC RPM: 3450/2850 TYPE: SC CODE: N FORM: FRAME: K 56 J VOLTS: 208-230/460 AMPS: 1.8-2.0/1.0 MAX AMPS: SF AMPS: - PH: 3 HZ: 60/50 INS: A AMB: 40°C DUTY: CONT ENCLOSURE: ODP	<p>183040-24</p> <p>LOW VOLTAGE</p> <p>4-BROWN 5-ORANGE 6-BLACK 1-RED 7-PURPLE 2-WHITE 8-GRAY 3-BLUE 9-PINK</p> <p>TO REVERSE, INTER-CHANGE ANY TWO LINE LEADS.</p> <p>HIGH VOLTAGE</p> <p>4-BROWN 7-PURPLE 5-ORANGE 8-GRAY 6-BLACK 9-PINK 1-RED 2-WHITE 3-BLUE</p> <p>LINE 1 LINE 2 LINE 3</p>	NOTES: 1. PILOT DIAMETER IS CONCENTRIC WITH SHAFT CENTERLINE WITHIN .004[.10] T.I.R. 2. FACE OF MOUNTING FLANGE IS PERPENDICULAR TO SHAFT CENTERLINE WITHIN .004[.10] T.I.R. 3. SHAFT RUNOUT NOT TO EXCEED .002[.05] T.I.R. 4. END PLAY NOT TO EXCEED .010[.25] MEASURED WITH NO THRUST 5. ALL DIMENSIONS SHOWN IN PARENTHESIS ARE REFERENCE DIMENSIONS

PERFORMANCE CURVE	APPROVED SAMPLE		
12715121			
UL COMPONENT	CSA		
FILE#	CCN#	FILE#	GUIDE#
E44549	PRGY2	LR4642	4211-01
CUSTOMER	DISTRIBUTION		

DRAWING REVISION F	REVISION BY G. RODRIGUEZ	DATE 04-26-2019	REGAL-BELOIT CORPORATION (RBC) PROVIDES TECHNICAL ASSISTANCE TO OUR CUSTOMERS IN SEVERAL AREAS. SINCE RBC DOES NOT RECEIVE ALL DATA CONCERNING THE USE AND APPLICATION OF THE MOTOR, THE APPLICABILITY OF THE MOTOR FOR THE CUSTOMER.	DRAWN BY: TOM ZHAO	Regal Beloit America, Inc.
ECO ECO-0165900	APPROVED BY G. RODRIGUEZ	DATE 04-26-2019		APPROVED BY: IDT	
ECO DESCRIPTION SEE ECO			DIMENSIONS WITHOUT TOLERANCES ARE FOR REFERENCE ONLY.	DATE: 07-11-2006	DESCRIPTION OUTLINE
<small>COPYRIGHT REGAL BELOIT AMERICA, INC. ALL RIGHTS RESERVED. PROPRIETARY AND CONFIDENTIAL INFORMATION - THIS DOCUMENT IS THE PROPERTY OF REGAL BELOIT AMERICA, INC. (OWNER) AND CONTAINS OWNER'S PROPRIETARY INFORMATION. ANY PERSON, CORPORATION OR OTHER FIRM RECEIVING IT IS DEEMED, BY RECEIVING IT, TO AGREE THAT IT, AND/OR ANY PART OF IT, SHALL NOT BE DISCLOSED TO ANY PERSON, CORPORATION OR OTHER ENTITY, DUPLICATED, AND/OR USED, EXCEPT AS EXPRESSLY APPROVED IN WRITING IN ADVANCE BY OWNER. THIS DOCUMENT SHALL BE RETURNED TO OWNER UPON REQUEST. IT MAY BE SUBJECT TO CERTAIN RESTRICTIONS UNDER APPLICABLE EXPORT CONTROL LAWS AND REGULATIONS.</small>			THIRD ANGLE PROJECTION	REFERENCE	MATERIAL
				SIZE DWG NO C H282	PROCESS/FINISH
					SHEET 1