

# PRODUCT INFORMATION PACKET



Model No: H437  
Catalog No: H437

General Purpose Motor, 1/2 HP, 3 Ph, 60 Hz, 200-230/460 V, 3600 RPM, B56 Frame, DP



Regal and Century are trademarks of Regal Rexnord Corporation or one of its affiliated companies.  
©2026 Regal Rexnord Corporation, All Rights Reserved. MC017097E





**Nameplate Specifications**

|                    |                      |                     |                      |
|--------------------|----------------------|---------------------|----------------------|
| Phase              | <b>3</b>             | Output HP           | <b>1/2 Hp</b>        |
| Output KW          | <b>0.37 kW</b>       | Voltage             | <b>200-230/460 V</b> |
| Speed              | <b>3450 rpm</b>      | Service Factor      | <b>1.60</b>          |
| Frame              | <b>B56</b>           | Enclosure           | <b>Drip Proof</b>    |
| Thermal Protection | <b>No Protection</b> | Ambient Temperature | <b>40 °C</b>         |
| Frequency          | <b>60 Hz</b>         | Current             | <b>1.9-1.8/.9 A</b>  |
| Duty               | <b>Continuous</b>    | Insulation Class    | <b>B</b>             |
| UL                 | <b>Recognized</b>    | CSA                 | <b>Y</b>             |
| CE                 | <b>N</b>             | Number of Speeds    | <b>1</b>             |

**Technical Specifications**

|                       |  |                   |                                    |
|-----------------------|--|-------------------|------------------------------------|
| Electrical Type       | <b>Polyphase, Induction Type, Single Or Dual Voltage</b> | Starting Method   | <b>Across The Line</b>             |
| Poles                 | <b>2</b>   | Rotation          | <b>Reversible Counterclockwise</b> |
| Mounting              | <b>Rigid Base</b>  | Drive End Bearing | <b>Ball</b>                        |
| Opp Drive End Bearing | <b>Ball</b>  | Frame Material    | <b>Rolled Steel</b>                |
| Shaft Type            | <b>Keyed</b>   | Overall Length    | <b>10.89 in</b>                    |
| Frame Length          | <b>3.88 in</b>   | Shaft Diameter    | <b>0.625 in</b>                    |
| Shaft Extension       | <b>1.94 in</b>   |                   |                                    |
| Connection Drawing    | <b>17050706.PCX</b>                                      | Outline Drawing   | <b>114012-S01</b>                  |

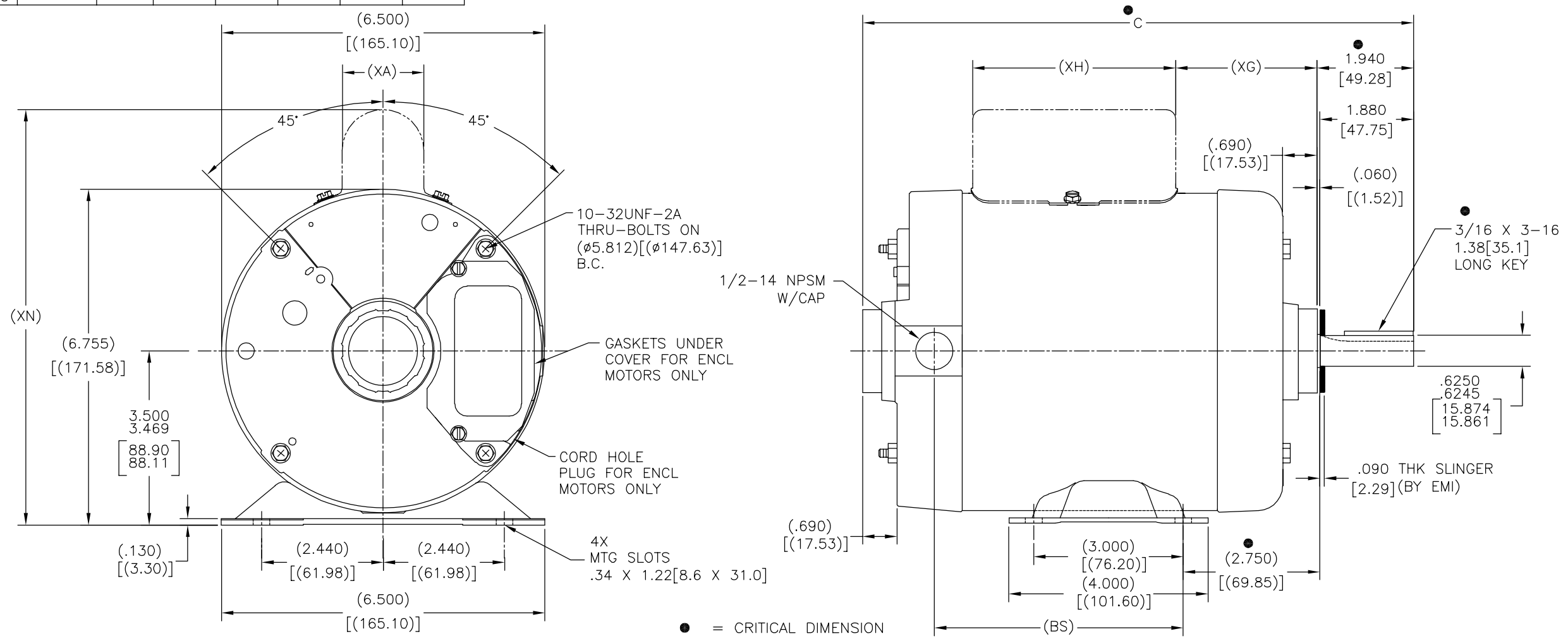
This is an uncontrolled document once printed or downloaded and is subject to change without notice. Date Created:03/31/2026

| TYPE           | FRAME | MOTOR            |                 | CAPACITOR BOX  |                 |                 |                 |
|----------------|-------|------------------|-----------------|----------------|-----------------|-----------------|-----------------|
|                |       | C                | BS              | XA             | XG              | XH              | XN              |
| CS<br>SP<br>SC | B56   | 9.82<br>[249.4]  | 3.75<br>[95.3]  | 1.64<br>[41.7] | 1.59<br>[40.4]  | 4.08<br>[103.6] | 8.37<br>[212.6] |
| CS<br>SP<br>SC | H56   | 10.07<br>[255.8] | 4.00<br>[101.6] | 1.64<br>[41.7] | 1.84<br>[46.7]  | 4.08<br>[103.6] | 8.37<br>[212.6] |
| CS<br>SP<br>SC | J56   | 11.07<br>[281.2] | 5.00<br>[127.0] | 1.64<br>[41.7] | 2.84<br>[72.1]  | 4.08<br>[103.6] | 8.37<br>[212.6] |
| CS<br>SP<br>SC | K56   | 11.44<br>[290.6] | 5.38<br>[136.7] | 1.64<br>[41.7] | 3.21<br>[81.5]  | 4.08<br>[103.6] | 8.37<br>[212.6] |
| CS<br>SP<br>SC | L56   | 12.19<br>[309.6] | 6.13<br>[155.7] | 1.64<br>[41.7] | 3.96<br>[100.6] | 4.08<br>[103.6] | 8.37<br>[212.6] |
| CS<br>SP<br>SC | M56   | 12.69<br>[322.3] | 6.63<br>[168.4] | 2.02<br>[51.3] | 4.46<br>[113.3] | 4.08<br>[103.6] | 8.75<br>[222.3] |

| REV | ECO     | REV BY  | DATE       | APPD    | DATE       |
|-----|---------|---------|------------|---------|------------|
| T   | 0036702 | M.AVILA | 08-12-2013 | M.AVILA | 08-12-2013 |

ALL DIMENSIONS SHOWN IN PARENTHESIS ARE REFERENCE DIMENSIONS. ALL OTHER DIMENSIONS ARE TOLERANCED PER THE FOLLOWING CHART UNLESS OTHERWISE SPECIFIED.

"C" DIM. = +/- .055[1.40]  
 SHAFT EXT. = +/- .034[.86]  
 LEAD LENGTHS = +/- 1.00[25.4]  
 EXTENDED THRU-BOLTS = +/- .050[1.27]  
 ANGULAR DIMS. = +/- 2'



GEOMETRIC CHARACTERISTICS & SYMBOLS

- FLATNESS
- STRAIGHTNESS
- ∠ ANGULARITY
- ⊥ PERPENDICULARITY (SQUARENESS)
- // PARALLELISM
- ROUNDNESS (CIRCULARITY)
- ⊘ CYLINDRICITY
- △ PROFILE OF ANY SURFACE
- ∩ PROFILE OF ANY LINE
- ↗ RUNOUT
- ⊕ TRUE POSITION
- ◎ CONCENTRICITY
- ≡ SYMMETRY

ASME Y14.5M 1994

UNLESS OTHERWISE SPECIFIED DIM. TOLERANCES ARE AS FOLLOWS:

INCH X XX XXX XXXX  
 ±.1 ±.02 ±.005 ±.0005  
 mm ±0.5 ±0.13 ±0.013

ANG. ±.50 DEG  
 REMOVE BURRS & BREAK SHARP EDGES:  
 INCH .003-.015 mm 0.1-0.4

CORNER FILLETS TO:  
 INCH .020 mm 0.5

MACHINE SURFACES:  
 INCH 125 mm 3.2

METRIC DIMS. SHOWN IN [BRACKETS]

DR BY:

APPD:

THIRD ANGLE PROJECTION

EDS DATE 11-11-2011  
 FORMAT REV H

CONFIDENTIAL: THIS DRAWING AND ITS INFORMATION ARE THE EXCLUSIVE AND CONFIDENTIAL PROPERTY OF REGAL-BELOIT CORPORATION AND ARE NOT TO BE DISCLOSED, DUPLICATED, DISTRIBUTED OR OTHERWISE USED WITHOUT THE WRITTEN CONSENT OF REGAL-BELOIT CORPORATION. -ALL RIGHTS RESERVED.

**REGAL REGAL-BELOIT CORPORATION**

DESCRIPTION: MODEL-DC OUTLINE

SIZE: C DWG NO: 114012

SCALE: NONE SHEET: 1

4

3

2

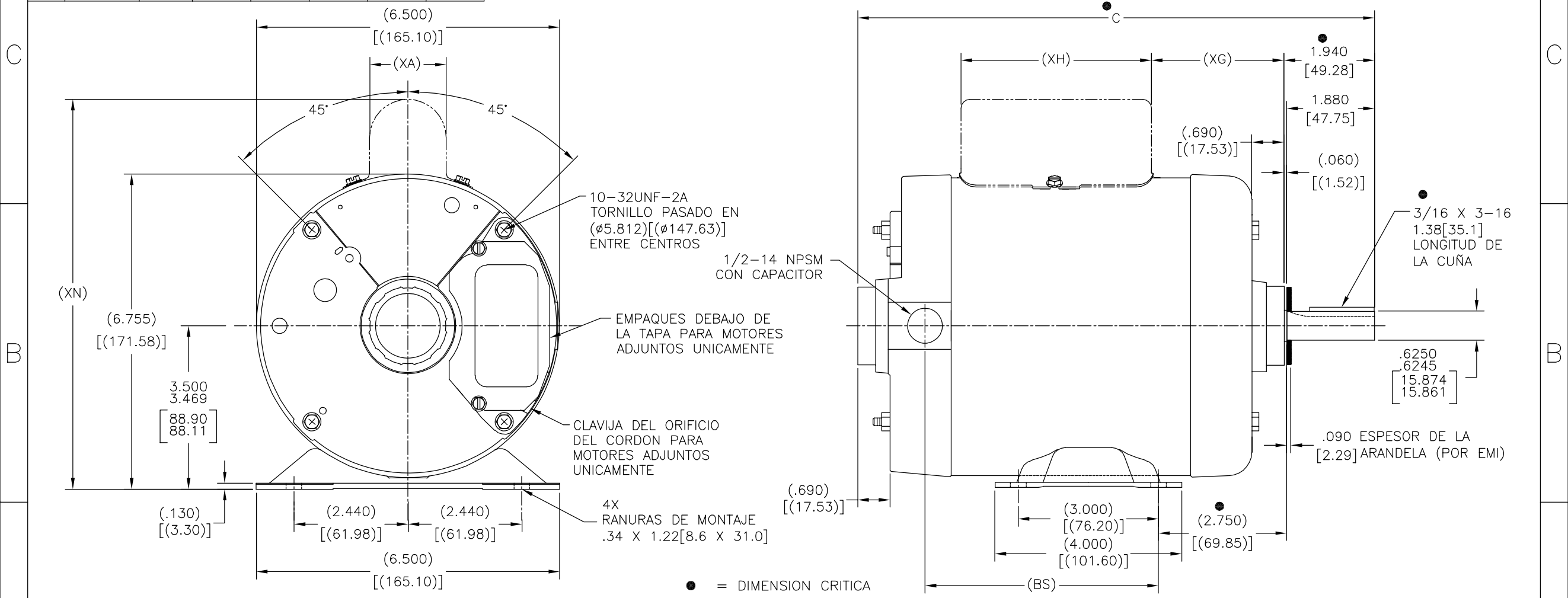
1

| TIPO           | CARCAZA | MOTOR            |                 | CAJA DEL CAPACITOR |                 |                 |                 |
|----------------|---------|------------------|-----------------|--------------------|-----------------|-----------------|-----------------|
|                |         | C                | BS              | XA                 | XG              | XH              | XN              |
| CS<br>SP<br>SC | B56     | 9.82<br>[249.4]  | 3.75<br>[95.3]  | 1.64<br>[41.7]     | 1.59<br>[40.4]  | 4.08<br>[103.6] | 8.37<br>[212.6] |
| CS<br>SP<br>SC | H56     | 10.07<br>[255.8] | 4.00<br>[101.6] | 1.64<br>[41.7]     | 1.84<br>[46.7]  | 4.08<br>[103.6] | 8.37<br>[212.6] |
| CS<br>SP<br>SC | J56     | 11.07<br>[281.2] | 5.00<br>[127.0] | 1.64<br>[41.7]     | 2.84<br>[72.1]  | 4.08<br>[103.6] | 8.37<br>[212.6] |
| CS<br>SP<br>SC | K56     | 11.44<br>[290.6] | 5.38<br>[136.7] | 1.64<br>[41.7]     | 3.21<br>[81.5]  | 4.08<br>[103.6] | 8.37<br>[212.6] |
| CS<br>SP<br>SC | L56     | 12.19<br>[309.6] | 6.13<br>[155.7] | 1.64<br>[41.7]     | 3.96<br>[100.6] | 4.08<br>[103.6] | 8.37<br>[212.6] |
| CS<br>SP<br>SC | M56     | 12.69<br>[322.3] | 6.63<br>[168.4] | 2.02<br>[51.3]     | 4.46<br>[113.3] | 4.08<br>[103.6] | 8.75<br>[222.3] |

|           |         |               |            |               |            |
|-----------|---------|---------------|------------|---------------|------------|
| REVISION: | ECO     | REVISADO POR: | FECHA:     | APROBADO POR: | FECHA:     |
| T         | 0036702 | M.AVILA       | 08-12-2013 | M.AVILA       | 08-12-2013 |

TODAS LAS DIMENSIONES MOSTRADAS ENTRE PARENTESIS SON DIMENSIONES DE REFERENCIA. TODAS LAS DEMAS DIMENSIONES TIENEN TOLERANCIA DE ACUERDO A LA SIGUIENTE TABLA A MENOS QUE SE ESPECIFIQUE LO CONTRARIO.

|                           |                  |
|---------------------------|------------------|
| "C" DIM.                  | = +/- .055[1.40] |
| EXTENSION DE FLECHA       | = +/- .034[.86]  |
| LONGITUD DE CABLES        | = +/- 1.00[25.4] |
| EXTENSION DE PERNO PASADO | = +/- .050[1.27] |
| DIMENSION ANGULAR         | = +/- 2'         |



|  |  |   |  |                         |
|--|--|---|--|-------------------------|
| <p><b>CARACTERISTICAS DE GEOMETRIA Y SIMBOLOS</b></p> <ul style="list-style-type: none"> <li>∩ PLANICIDAD</li> <li>- RECTITUD</li> <li>∠ ANGULARIDAD</li> <li>⊥ PERPENDICULARIDAD (A ESCUADRA)</li> <li>// PARALELISMO</li> <li>○ REDONDEZ (CIRCULARIDAD)</li> <li>⊘ CILINDRICIDAD</li> <li>△ PERFIL DE CUALQUIER SUPERFICIE</li> <li>▽ PERFIL DE CUALQUIER LINEA</li> <li>∧ VARIACION</li> <li>⊕ POSICION REAL</li> <li>⊙ CONCENTRICIDAD</li> <li>≡ SIMETRIA</li> </ul> <p>ASME Y14.5M 1994</p> | <p>A MENOS QUE SE ESPECIFIQUE DE OTRA MANERA, LAS TOLERANCIAS DE LAS DIMS; SON LAS SIGUIENTES:</p> <p>PULG ±.1 ±.02 ±.005 ±.0005<br/>mm ±0.5 ±0.13 ±0.013</p> <p>ANG. ± 50 GRADOS</p> <p>ELIMINAR REBABAS Y ORILLAS FILOSAS DEL BORDE.</p> <p>PULG .003-.015 mm 0.1-0.4<br/>FILETEAR ESQUINA: PULG .020 mm 0.5<br/>MAQUINAR SUPERFICIES</p> <p>PULG 125 mm 3.2</p> <p>DIMS METRICAS MOSTRADAS [PARENTESIS]</p> | DIBUJADO POR:   | <p><b>REGAL REGAL-BELOIT CORPORATION</b></p> |                         |
|  |  | APROBADO POR:   |  | DESCRIPCION:            |
|  |  | TERCER ANGULO DE PROYECCION   | FECHA EDS: 11-11-2011<br>REV. FORMATO: H     | MODEL-DC<br>OUTLINE     |
|  |  | CONFIDENCIAL: ESTE DIBUJO Y SU INFORMACION SON PROPIEDAD DE USO EXCLUSIVO Y CONFIDENCIAL DE REGAL-BELOIT CORPORATION. Y NO DEBERAN SER REVELADOS, DUPLICADOS, DISTRIBUIDOS O USARSE DE OTRA MANERA SIN EL CONSENTIMIENTO ESCRITO DE REGAL-BELOIT CORPORATION. -TODOS LOS DERECHOS RESERVADOS. | TAMAÑO: C<br>NUMERO DE DIBUJO: 114012        | ESCALA: NONE<br>HOJA: 1 |

4

3

2

1