

PRODUCT INFORMATION PACKET



Model No: H525L

Catalog No: H525L

General Purpose Motor, 1.0 HP, 3 Ph, 60 Hz, 575 V, 1800 RPM, HA56 Frame, TEFC



Regal and Century are trademarks of Regal Rexnord Corporation or one of its affiliated companies.

©2023 Regal Rexnord Corporation, All Rights Reserved. MC017097E





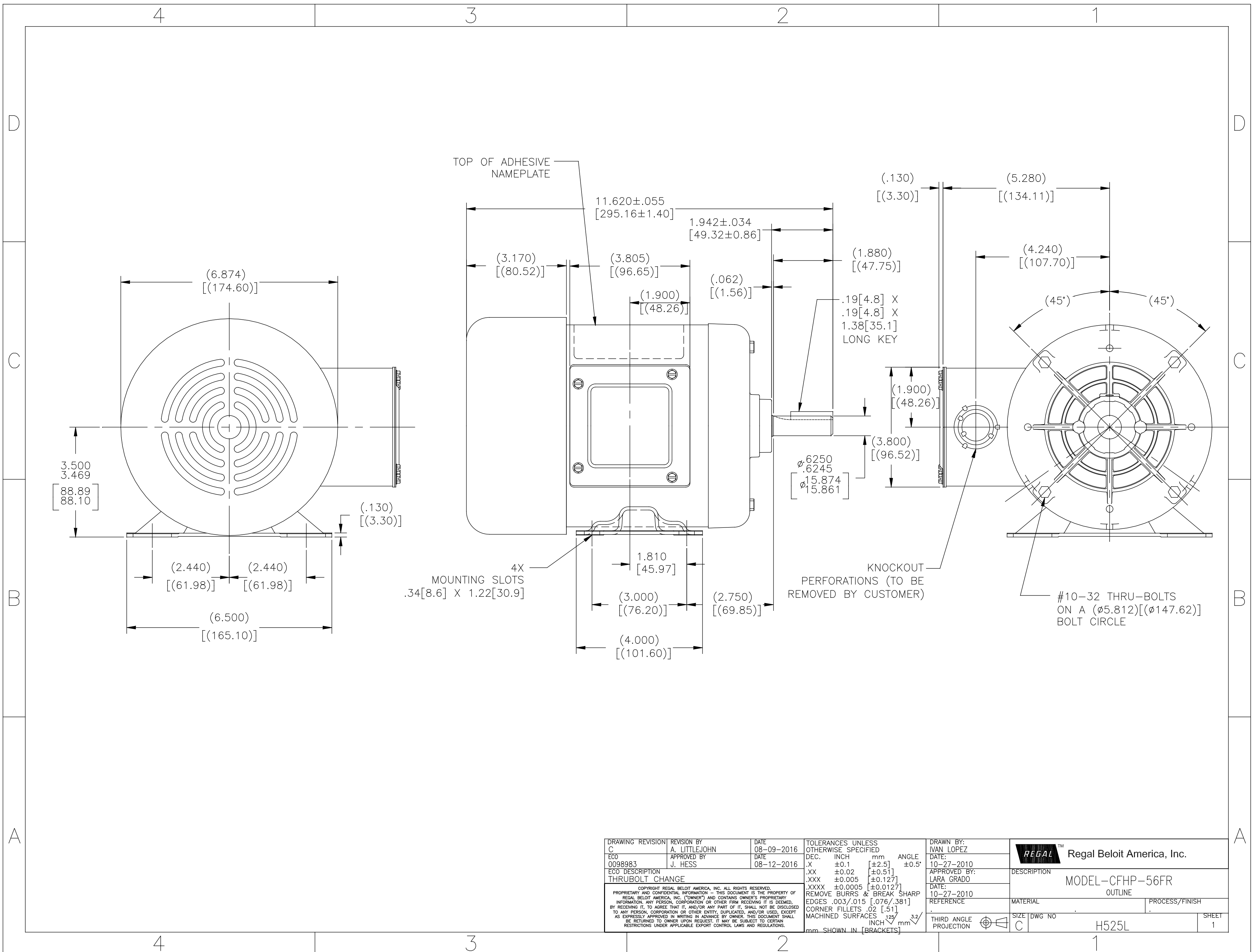
Nameplate Specifications

Phase	3	Output HP	1.0 Hp
Output KW	0.75 kW	Voltage	575 V
Speed	1725 rpm	Service Factor	1.15
Frame	HA56	Enclosure	Totally Enclosed Fan Cooled
Thermal Protection	No Protection	Ambient Temperature	40 °C
Frequency	60 Hz	Current	1.4 A
Duty	Continuous	Insulation Class	B
UL	Recognized	CSA	Y
CE	N	Number of Speeds	1

Technical Specifications

Electrical Type	Polyphase, Induction Type, Single Or Dual Voltage	Starting Method	Across The Line
Poles	4	Rotation	Reversible Counterclockwise
Mounting	Rigid Base	Drive End Bearing	Ball
Opp Drive End Bearing	Ball	Frame Material	Rolled Steel
Shaft Type	Keyed	Overall Length	11.62 in
Frame Length	4.50 in	Shaft Diameter	0.625 in
Shaft Extension	1.94 in		
Outline Drawing	H525L-S01		

This is an uncontrolled document once printed or downloaded and is subject to change without notice. Date Created:08/24/2023



DRAWING REVISION C	REVISION BY A. LITTLEJOHN	DATE 08-09-2016	TOLERANCES UNLESS OTHERWISE SPECIFIED	DRAWN BY: IVAN LOPEZ	Regal Beloit America, Inc.
ECO 0098983	APPROVED BY J. HESS	DATE 08-12-2016	DEC. INCH mm ANGLE .X ±0.1 [±2.5] ±0.5° .XX ±0.02 [±0.51] .XXX ±0.005 [±0.127] .XXXX ±0.0005 [±0.0127]	DATE: 10-27-2010	
ECO DESCRIPTION THRU-BOLT CHANGE			REMOVE BURRS & BREAK SHARP EDGES .003/.015 [.076/.381] CORNER FILLETS .02 [.51] MACHINED SURFACES 125/32 mm SHOWN IN [BRACKETS]	APPROVED BY: LARA GRADO	DESCRIPTION MODEL-CFHP-56FR OUTLINE
<small>COPYRIGHT REGAL BELOIT AMERICA, INC. ALL RIGHTS RESERVED. PROPRIETARY AND CONFIDENTIAL INFORMATION - THIS DOCUMENT IS THE PROPERTY OF REGAL BELOIT AMERICA, INC. (OWNER) AND CONTAINS OWNER'S PROPRIETARY INFORMATION. ANY PERSON, CORPORATION OR OTHER FIRM RECEIVING IT IS DEEMED, BY RECEIVING IT, TO AGREE THAT IT, AND/OR ANY PART OF IT, SHALL NOT BE DISCLOSED TO ANY PERSON, CORPORATION OR OTHER ENTITY, DUPLICATED, AND/OR USED, EXCEPT AS EXPRESSLY APPROVED IN WRITING IN ADVANCE BY OWNER. THIS DOCUMENT SHALL BE RETURNED TO OWNER UPON REQUEST. IT MAY BE SUBJECT TO CERTAIN RESTRICTIONS UNDER APPLICABLE EXPORT CONTROL LAWS AND REGULATIONS.</small>				DATE: 10-27-2010	MATERIAL
				REFERENCE	PROCESS/FINISH
				THIRD ANGLE PROJECTION	SIZE DWG NO C H525L
					SHEET 1