

PRODUCT INFORMATION PACKET



Model No: H534LES
Catalog No: H534LES
General Purpose Motor, 1.5 HP, 3 Ph, 60 Hz, 230/460 V, 1800 RPM, 56H Frame, ODP



Regal and Century are trademarks of Regal Rexnord Corporation or one of its affiliated companies.
©2024 Regal Rexnord Corporation, All Rights Reserved. MC017097E





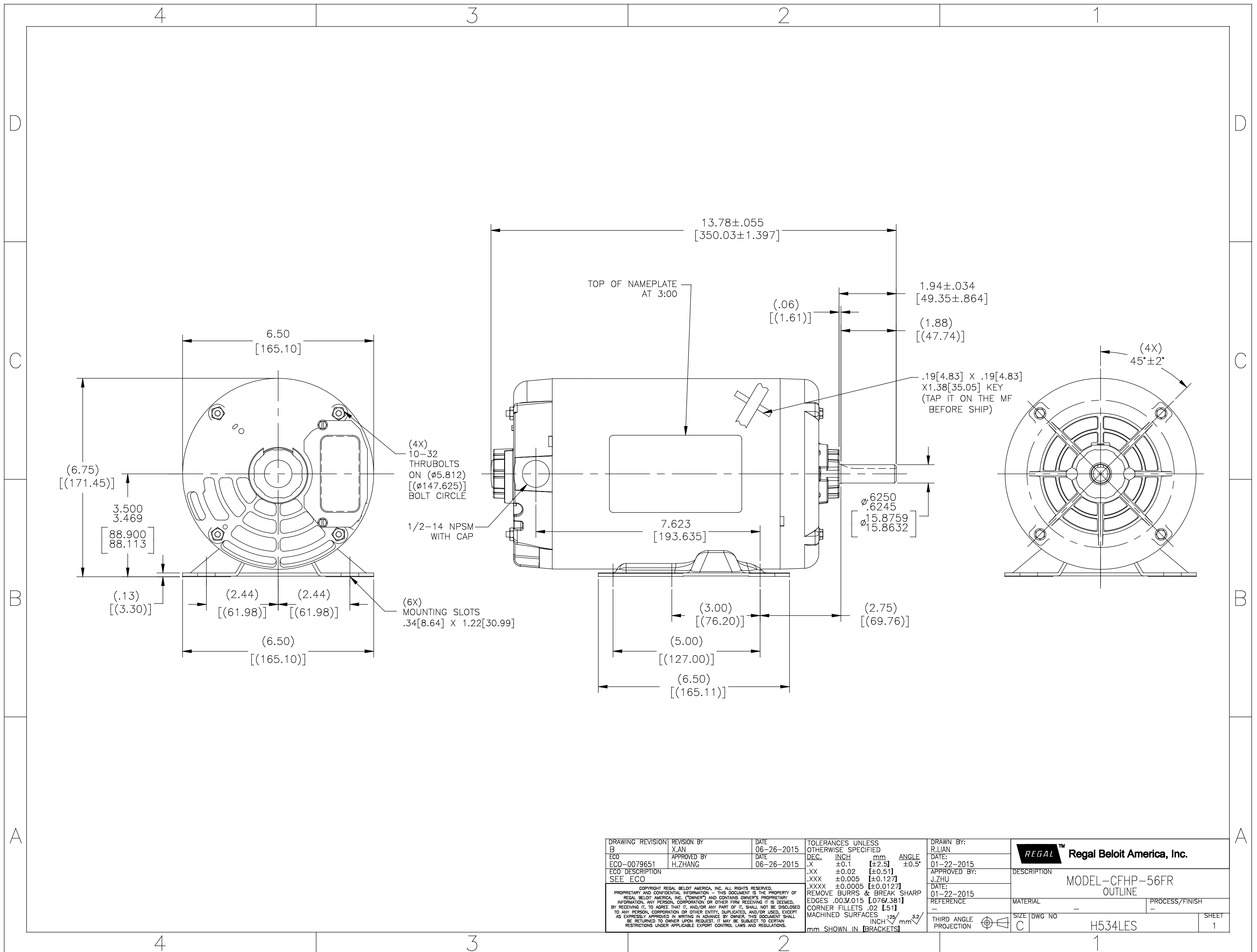
Nameplate Specifications

Phase	3	Output HP	1.5 Hp
Output KW	1.1 kW	Voltage	230/460 V
Speed	1725 rpm	Service Factor	1.2
Frame	56H	Enclosure	Open Drip Proof
Thermal Protection	No Protection	Efficiency	86.5 %
Ambient Temperature	40 °C	Frequency	60 Hz
Current	4.7/2.35 A	Duty	Continuous
Insulation Class	B	UL	Recognized
CSA	N	CE	Y
Number of Speeds	1		

Technical Specifications

Electrical Type	Polyphase	Starting Method	Across The Line
Poles	4	Rotation	Counterclockwise
Mounting	Rigid Base	Drive End Bearing	Ball
Opp Drive End Bearing	Ball	Frame Material	Rolled Steel
Shaft Type	Keyed	Overall Length	13.78 in
Frame Length	7.75 in	Shaft Diameter	0.625 in
Shaft Extension	1.94 in		
Outline Drawing	H534LES-S01	Connection Drawing	D0000283-001

This is an uncontrolled document once printed or downloaded and is subject to change without notice. Date Created:04/25/2024



DRAWING REVISION B	REVISION BY X.AN	DATE 06-26-2015	TOLERANCES UNLESS OTHERWISE SPECIFIED DEC. INCH mm ANGLE .X ±0.1 [±2.5] ±0.5° .XX ±0.02 [±0.51] .XXX ±0.005 [±0.127] .XXXX ±0.0005 [±0.0127]	DRAWN BY: R.LIAN	Regal Beloit America, Inc.		
ECO ECO-0079651	APPROVED BY H.ZHANG	DATE 06-26-2015	REMOVE BURRS & BREAK SHARP EDGES .003/.015 [0.076/.381] CORNER FILLETS .02 [51] MACHINED SURFACES 125/INCH 3.2/mm	DATE: 01-22-2015		DESCRIPTION MODEL-CFHP-56FR OUTLINE	
ECO DESCRIPTION SEE ECO	COPYRIGHT REGAL BELOIT AMERICA, INC. ALL RIGHTS RESERVED. PROPRIETARY AND CONFIDENTIAL INFORMATION - THIS DOCUMENT IS THE PROPERTY OF REGAL BELOIT AMERICA, INC. (OWNERS) AND CONTAINS OWNERS PROPRIETARY INFORMATION. ANY PERSON, CORPORATION OR OTHER FIRM RECEIVING IT IS DEEMED, BY RECEIVING IT, TO AGREE THAT IT, AND/OR ANY PART OF IT, SHALL NOT BE DISCLOSED TO ANY PERSON, CORPORATION OR OTHER ENTITY, DUPLICATED, AND/OR USED, EXCEPT AS EXPRESSLY APPROVED IN WRITING IN ADVANCE BY OWNER. THIS DOCUMENT SHALL BE RETURNED TO OWNER UPON REQUEST. IT MAY BE SUBJECT TO CERTAIN RESTRICTIONS UNDER APPLICABLE EXPORT CONTROL LAWS AND REGULATIONS.			APPROVED BY: J.ZHU	MATERIAL -	PROCESS/FINISH -	
			THIRD ANGLE PROJECTION	DATE: 01-22-2015	SIZE C	DWG NO H534LES	SHEET 1

4

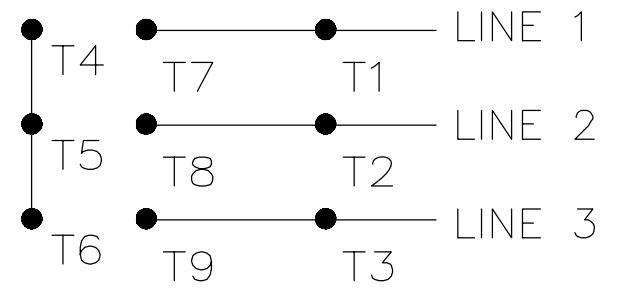
3

2

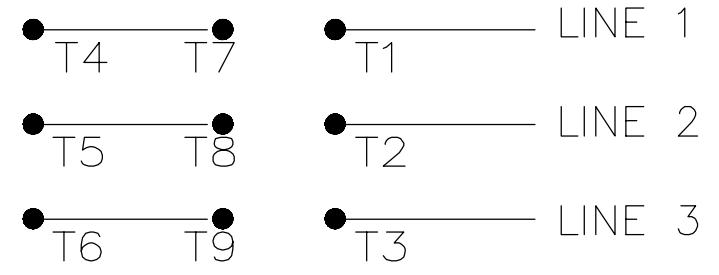
1

REV	ECO	REV BY	DATE	APPD	DATE
A	0016784	R.RASCON	10-12-2010	D.JUAREZ	10-12-2010

LOW VOLTAGE



HIGH VOLTAGE



TO REVERSE ROTATION FOR EITHER VOLTAGE, INTERCHANGE ANY 2 LINE LEADS

NOTES:

1. DATTED BOX REPRESENTS TOTAL PRINTED AREA ALLOWED FOR CONNECTION DIAGRAM TO FIT IN (.75[19.1] X 2.13[54.1]) SEE NAMEPLATE DRAWING 170500 OR 170501 FOR LOCATION.
2. CHARACTERS ARE TO BE A MINIMUM OF .03[.8] TO .06[1.5] MAXIMUM IN HEIGHT.
3. DETAILS ARE NOT TO BE COPIED FROM DRAWING, BUT ARE TO BE REPRODUCED FROM ORIGINAL ARTWORK FURNISHED.

GEOMETRIC CHARACTERISTICS & SYMBOLS

- ▮ FLATNESS
- STRAIGHTNESS
- ∠ ANGULARITY
- ⊥ PERPENDICULARITY (SQUARENESS)
- // PARALLELISM
- ROUNDNESS (CIRCULARITY)
- ⊘ CYLINDRICITY
- △ PROFILE OF ANY SURFACE
- ∩ PROFILE OF ANY LINE
- ↗ RUNOUT
- ⊕ TRUE POSITION
- ◎ CONCENTRICITY
- ≡ SYMMETRY

UNLESS OTHERWISE SPECIFIED
DIM. TOLERANCES ARE AS FOLLOWS:

	X	XX	XXX	XXXX
INCH	±.1	±.02	±.005	±.0005
mm	±0.5	±0.13	±0.013	

ANG. ±.50 DEG
REMOVE BURRS & BREAK SHARP EDGES:
INCH .003-.015 mm 0.1-0.4
CORNER FILLETS TO:
INCH .020 mm 0.5
MACHINE SURFACES:
INCH 125 mm 3.2
METRIC DIMS. SHOWN IN [BRACKETS]

DR BY:	R.RASCON	10-12-2010
APPD:	D.JUAREZ	10-12-2010
THIRD ANGLE PROJECTION		EDS DATE 02-22-2008 FORMAT REV F
CONFIDENTIAL: THIS DRAWING AND ITS INFORMATION ARE THE EXCLUSIVE AND CONFIDENTIAL PROPERTY OF A.O. SMITH CORP. AND ARE NOT TO BE DISCLOSED, DUPLICATED, DISTRIBUTED OR OTHERWISE USED WITHOUT THE WRITTEN CONSENT OF A.O. SMITH CORP. -ALL RIGHTS RESERVED. ASME Y14.5M 1994		



ELECTRICAL PRODUCTS COMPANY
A DIVISION OF A. O. SMITH CORPORATION

DESCRIPTION	
CONN DIAGRAM-NAMEPLATE	
SIZE B	DWG NO D0000283-001
SCALE NONE	SHEET 1

4

3

2

1

4

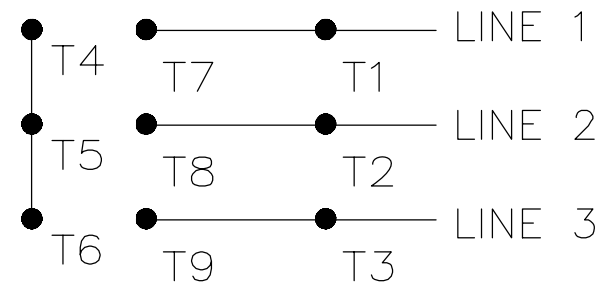
3

2

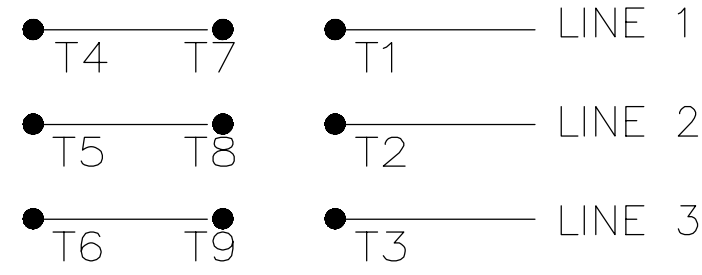
1

REVISION:	ECO	REVISADO POR:	FECHA:	APROBADO POR:	FECHA:
A	0016784	R.RASCON	10-12-2010	D.JUAREZ	10-12-2010

LOW VOLTAGE



HIGH VOLTAGE



TO REVERSE ROTATION FOR EITHER VOLTAGE, INTERCHANGE ANY 2 LINE LEADS

NOTAS:

1. LA CAJA PUNTEADA REPRESENTA EL TOTAL DEL AREA IMPRESA TOTAL PERMITIDA PARA UN DIAGRAMA DE CONEXION PA5A ANCAJAR EN (.75[19.1] X 2.13 [54.1]) VER EL DIBUJO DE LA PLACA DE IDENTIFICACION 170500 O 170501 PARA LOCALIZACION.
2. LOS CARACTERES DEBEN SER DE UN MINIMO DE ALTURA DE .03[.8] A UN MAXIMO DE .06[1.5].
3. LOS DETALLES NO DEBEN SER COPIADOS DEL DIBUJO, SINO DEBEN SER REPRODUCIDOS DE LAS ILUSTRACIONES ORIGINALES EQUIPADAS.

CARACTERISTICAS DE GEOMETRIA Y SIMBOLOS

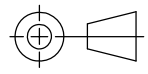
- ∇ PLANICIDAD
- RECTITUD
- ∠ ANGULARIDAD
- ⊥ PERPENDICULARIDAD (A ESCUADRA)
- // PARALELISMO
- REDONDEZ (CIRCULARIDAD)
- ⊘ CILINDRICIDAD
- ⊖ PERFIL DE CUALQUIER SUPERFICIE
- ⌒ PERFIL DE CUALQUIER LINEA
- ↑ VARIACION
- ⊕ POSICION REAL
- ◎ CONCENTRICIDAD
- ≡ SIMETRIA


A MENOS QUE SE ESPECIFIQUE DE OTRA MANERA, LAS TOLERANCIAS DE LAS DIMS; SON LAS SIGUIENTES:

PULG	±.1	±.02	±.005	±.0005
mm	±0.5	±0.13	±0.013	

ANG. ±.50 GRADOS
 ELIMINAR REBABAS Y ORILLAS FILOSAS DEL BORDE.
 PULG .003-.015 mm 0.1-0.4
 FILETEAR ESQUINA: PULG .020 mm 0.5
 MAQUINAR SUPERFICIES
 PULG 125 mm 3.2

DIMS METRICAS MOSTRADAS [PARENTESIS]

DIBUJADO POR: R.RASCON	10-12-2010
APROBADO POR: D.JUAREZ	10-12-2010
TERCER ANGULO DE PROYECCION	 FECHA EDS: 02-22-2008 REV. FORMATO: F
CONFIDENCIAL: ESTE DIBUJO Y SU INFORMACION SON PROPIEDAD DE USO EXCLUSIVO Y CONFIDENCIAL DE A.O.SMITH CORP. Y NO DEBERAN SER REVELADOS, DUPLICADOS, DISTRIBUIDOS O USARSE DE OTRA MANERA SIN EL CONSENTIMIENTO ESCRITO DE A.O. SMITH CORP. -TODOS LOS DERECHOS RESERVADOS.ASME Y14.5M 1994	

 ELECTRICAL PRODUCTS COMPANY A DIVISION OF A. O. SMITH CORPORATION	
DESCRIPCION: CONN DIAGRAM-NAMEPLATE	
TAMAÑO: B	NUMERO DE DIBUJO: D0000283-001
ESCALA: NONE	HOJA: 1

4

3

2

1

4

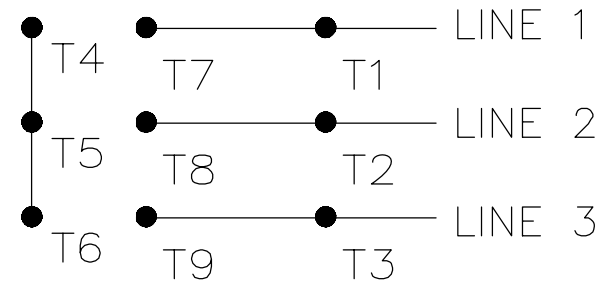
3

2

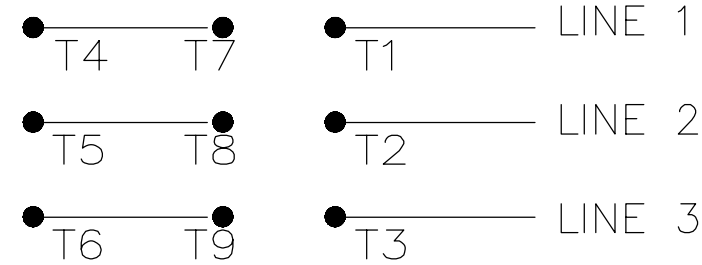
1

版本	ECO	编制	日期	批准	日期
A	0016784	R.RASCON	10-12-2010	D.JUAREZ	10-12-2010

LOW VOLTAGE



HIGH VOLTAGE



TO REVERSE ROTATION FOR EITHER VOLTAGE, INTERCHANGE ANY 2 LINE LEADS

B

B

A

A


- 形位公差
- 平面度
- 直线度
- ∠ 倾斜度
- ⊥ 垂直度
- // 平行度
- 圆度
- ∅ 圆柱度
- △ 面轮廓度
- ⌒ 线轮廓度
- ↗ 圆跳动
- ⊕ 位置度
- ◎ 同轴度
- ≡ 对称度

除另有注明
尺寸公差如下:

	X	XX	XXX	XXXX
英寸	±.1	±.02	±.005	±.0005
毫米	±0.5	±0.13	±0.013	
角度	±.50 度			
清理毛刺和尖棱				
英寸	.003-.015		毫米 0.1-0.4	
内圆角				
英寸	.020		毫米 0.5	
表面粗糙度				
英寸	125		米制 3.2	

米制尺寸显示在 []

绘图:	R.RASCON	10-12-2010
批准:	D.JUAREZ	10-12-2010
第三角投影		图纸格式发布日期 02-22-2008 图纸格式版本 F
机密: 本图纸及相关信息所有权归A. O. SMITH公司所有。未经A. O. SMITH公司书面授权, 不得泄露、复制、传播或作其他用途。--版权所有		
ASME Y14.5M 1994		



ELECTRICAL PRODUCTS COMPANY
A DIVISION OF A. O. SMITH CORPORATION

名称: CONN DIAGRAM-NAMEPLATE

图幅: B	图号: D0000283-001
比例: NONE	页号: 1

4

3

2

1