

# PRODUCT INFORMATION PACKET



Model No: H607  
Catalog No: H607

General Purpose Pump Motor, 1.5 HP, 3 Ph, 60 Hz, 208-230/460 V, 3600 RPM, M56J Frame, DP



Regal and Century are trademarks of Regal Rexnord Corporation or one of its affiliated companies.  
©2023 Regal Rexnord Corporation, All Rights Reserved. MC017097E





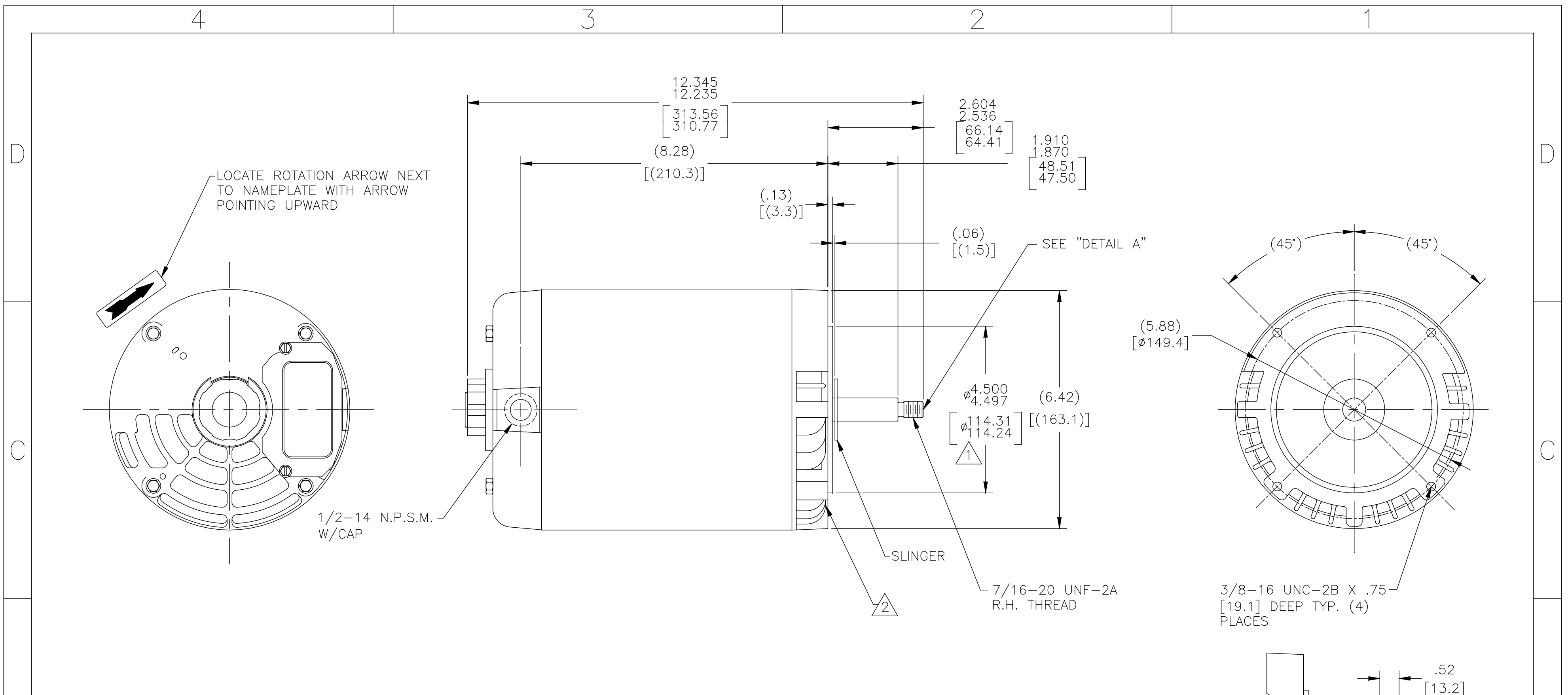
**Nameplate Specifications**

|                    |               |                     |               |
|--------------------|---------------|---------------------|---------------|
| Output HP          | 1.5 Hp        | Output KW           | 1.1 kW        |
| Frequency          | 60 Hz         | Voltage             | 208-230/460 V |
| Current            | 5.8-5.6/2.8 A | Speed               | 3450/2850 rpm |
| Service Factor     | 1.3           | Phase               | 3             |
| Duty               | Continuous    | Insulation Class    | B             |
| Frame              | M56J          | Enclosure           | Drip Proof    |
| Thermal Protection | No Protection | Ambient Temperature | 40 °C         |
| UL                 | Recognized    | CSA                 | Y             |
| CE                 | N             | Number of Speeds    | 1             |

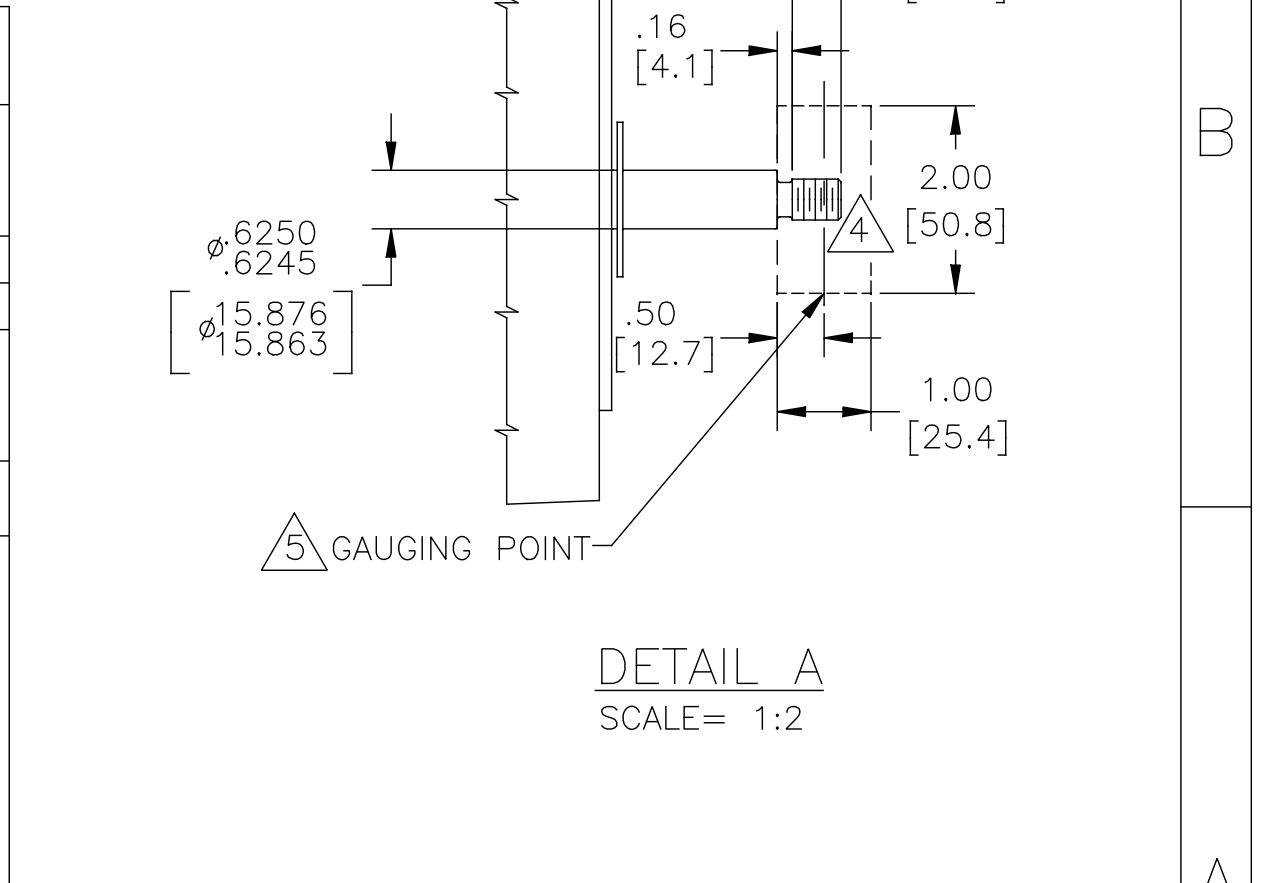
**Technical Specifications**

|                       |   |                   |                      |
|-----------------------|---|-------------------|----------------------|
| Electrical Type       | Polyphase, Induction Type, Single Or Dual Voltage | Starting Method   | Across The Line      |
| Poles                 | 2   | Rotation          | Reversible Clockwise |
| Mounting              | Round   | Drive End Bearing | Ball                 |
| Opp Drive End Bearing | Ball  | Frame Material    | Rolled Steel         |
| Shaft Type            | Threaded  | Overall Length    | 12.35 in             |
| Frame Length          | 6.75 in   | Shaft Diameter    | 0.625 in             |
| Shaft Extension       | 2.60 in   |                   |                      |
| Connection Drawing    | 18304024.PCX                                      | Outline Drawing   | 12687-006            |

This is an uncontrolled document once printed or downloaded and is subject to change without notice. Date Created:03/15/2023



| NAMEPLATE DATA   | EXTERNAL CONNECTION DIAGRAM   | PERFORMANCE CURVE NO. | APPROVED SAMPLE OR REF. MODEL                |                     |         |  |         |          |  |          |         |  |          |       |        |        |          |  |         |         |        |        |        |  |       |        |        |         |        |  |        |          |  |
|--|---|-----------------------|--|---------------------|---------|--|---------|----------|--|----------|---------|--|----------|-------|--------|--------|----------|--|---------|---------|--------|--------|--------|--|-------|--------|--------|---------|--------|--|--------|----------|--|
| MODEL: 184768<br>CUST. P/N: H607<br>HP: 1.5<br>SF: 1.30<br>ROT: RCW<br>RPM: 3450/2850<br>TYPE: SC<br>CODE: L<br>FRAME: M 56 J<br>VOLTS: 208-230/460<br>AMPS: 5.3-5.6/2.8<br>MAX AMPS:<br>PH: 3<br>HZ: 60/50<br>INS: B<br>AMB: 40°C<br>DUTY: CONT | <p>183040-24</p> <table border="0"> <tr> <td><b>LOW VOLTAGE</b></td> <td>TO REVERSE, INTER-CHANGE ANY TWO LINE LEADS.</td> <td><b>HIGH VOLTAGE</b></td> </tr> <tr> <td>4-BROWN</td> <td></td> <td>4-BROWN</td> </tr> <tr> <td>5-ORANGE</td> <td></td> <td>7-PURPLE</td> </tr> <tr> <td>6-BLACK</td> <td></td> <td>5-ORANGE</td> </tr> <tr> <td>1-RED</td> <td>LINE 1</td> <td>8-GRAY</td> </tr> <tr> <td>7-PURPLE</td> <td></td> <td>6-BLACK</td> </tr> <tr> <td>2-WHITE</td> <td>LINE 2</td> <td>9-PINK</td> </tr> <tr> <td>8-GRAY</td> <td></td> <td>1-RED</td> </tr> <tr> <td>3-BLUE</td> <td>LINE 3</td> <td>2-WHITE</td> </tr> <tr> <td>9-PINK</td> <td></td> <td>3-BLUE</td> </tr> </table> | <b>LOW VOLTAGE</b>    | TO REVERSE, INTER-CHANGE ANY TWO LINE LEADS. | <b>HIGH VOLTAGE</b> | 4-BROWN |  | 4-BROWN | 5-ORANGE |  | 7-PURPLE | 6-BLACK |  | 5-ORANGE | 1-RED | LINE 1 | 8-GRAY | 7-PURPLE |  | 6-BLACK | 2-WHITE | LINE 2 | 9-PINK | 8-GRAY |  | 1-RED | 3-BLUE | LINE 3 | 2-WHITE | 9-PINK |  | 3-BLUE | 18080421 |  |
| <b>LOW VOLTAGE</b>   | TO REVERSE, INTER-CHANGE ANY TWO LINE LEADS.  | <b>HIGH VOLTAGE</b>   |  |                     |         |  |         |          |  |          |         |  |          |       |        |        |          |  |         |         |        |        |        |  |       |        |        |         |        |  |        |          |  |
| 4-BROWN  |   | 4-BROWN               |  |                     |         |  |         |          |  |          |         |  |          |       |        |        |          |  |         |         |        |        |        |  |       |        |        |         |        |  |        |          |  |
| 5-ORANGE   |   | 7-PURPLE              |  |                     |         |  |         |          |  |          |         |  |          |       |        |        |          |  |         |         |        |        |        |  |       |        |        |         |        |  |        |          |  |
| 6-BLACK  |   | 5-ORANGE              |  |                     |         |  |         |          |  |          |         |  |          |       |        |        |          |  |         |         |        |        |        |  |       |        |        |         |        |  |        |          |  |
| 1-RED  | LINE 1  | 8-GRAY                |  |                     |         |  |         |          |  |          |         |  |          |       |        |        |          |  |         |         |        |        |        |  |       |        |        |         |        |  |        |          |  |
| 7-PURPLE   |   | 6-BLACK               |  |                     |         |  |         |          |  |          |         |  |          |       |        |        |          |  |         |         |        |        |        |  |       |        |        |         |        |  |        |          |  |
| 2-WHITE  | LINE 2  | 9-PINK                |  |                     |         |  |         |          |  |          |         |  |          |       |        |        |          |  |         |         |        |        |        |  |       |        |        |         |        |  |        |          |  |
| 8-GRAY   |   | 1-RED                 |  |                     |         |  |         |          |  |          |         |  |          |       |        |        |          |  |         |         |        |        |        |  |       |        |        |         |        |  |        |          |  |
| 3-BLUE   | LINE 3  | 2-WHITE               |  |                     |         |  |         |          |  |          |         |  |          |       |        |        |          |  |         |         |        |        |        |  |       |        |        |         |        |  |        |          |  |
| 9-PINK   |   | 3-BLUE                |  |                     |         |  |         |          |  |          |         |  |          |       |        |        |          |  |         |         |        |        |        |  |       |        |        |         |        |  |        |          |  |
|  |   | UL COMPONENT          | CSA  |                     |         |  |         |          |  |          |         |  |          |       |        |        |          |  |         |         |        |        |        |  |       |        |        |         |        |  |        |          |  |
|  |   | FILE#                 | CCN#   |                     |         |  |         |          |  |          |         |  |          |       |        |        |          |  |         |         |        |        |        |  |       |        |        |         |        |  |        |          |  |
|  |   | E44549                | PRGY2  |                     |         |  |         |          |  |          |         |  |          |       |        |        |          |  |         |         |        |        |        |  |       |        |        |         |        |  |        |          |  |
|  |   | FILE#                 | CLASS#                                       |                     |         |  |         |          |  |          |         |  |          |       |        |        |          |  |         |         |        |        |        |  |       |        |        |         |        |  |        |          |  |
|  |   | LR4642                | 4211-01                                      |                     |         |  |         |          |  |          |         |  |          |       |        |        |          |  |         |         |        |        |        |  |       |        |        |         |        |  |        |          |  |
|  |   | ENCLOSURE: ODP        | CUSTOMER: DISTRIBUTION                       |                     |         |  |         |          |  |          |         |  |          |       |        |        |          |  |         |         |        |        |        |  |       |        |        |         |        |  |        |          |  |



|   |  |  |   |                    |   |  |  |
|---|--|--|---|--------------------|---|--|--|
| NOTES:<br>1. PILOT DIAMETER IS CONCENTRIC WITH SHAFT CENTERLINE WITHIN .004 T.I.R.<br>2. FACE OF MOUNTING FLANGE IS PERPENDICULAR TO SHAFT CENTERLINE WITHIN .004 T.I.R.<br>3. SHAFT RUNOUT NOT TO EXCEED .002 T.I.R.<br>4. FOR THREADED SHAFT EXT. MATING PARTS SHOULD BE RELIEVED ONE THREAD TO CLEAR FILLET. | 5. FOR THREADER SHAFT EXT. ECCENTRICITY OF THREADED PORTION OF SHAFT IS HELD WITHIN .004 TOTAL GAGE READING WITH THE INDICATOR ON O.D. OF GROUND RING AS SHOWN. THE GAGE BEING STATIONARY WITH RESPECT TO THE ROTOR.<br>6. END PLAY NOT TO EXCEED .010 MEASURED WITH NO THRUST<br>7. ALL DIMENSIONS SHOWN IN PARENTHESIS ARE REFERENCE DIMENSIONS. | DRAWING REVISION<br>ECO-0097387<br>SEE ECO | REVISION BY<br>A.BAUGHMAN<br>DATE<br>04-20-2016 | DATE<br>04-20-2016 | TOLERANCES UNLESS OTHERWISE SPECIFIED<br>DEC. INCH mm ANGLE<br>.XX ±0.02 [±0.51] ±0.5°<br>.XXX ±0.005 [±0.127]<br>.XXXX ±0.0005 [±0.0127]<br>REMOVE BURRS & BREAK SHARP EDGES .003/.015 [0.076/.381]<br>CORNER FILLETS .02 [.51]<br>MACHINED SURFACES 125/3.2 INCH/mm 3.2/0.125<br>mm SHOWN IN [BRACKETS] | DRAWN BY:<br>KHR<br>DATE:<br>09-08-2012<br>APPROVED BY:<br>DATE:<br>REFERENCE: | REGAL™ Regal Beloit America, Inc.<br>DESCRIPTION<br>MODEL-CFHP-56FR<br>OUTLINE<br>MATERIAL: -<br>PROCESS/FINISH: -<br>SIZE DWG NO<br>C 12687-006<br>SHEET<br>1 |
|---|--|--|---|--------------------|---|--|--|