

PRODUCT INFORMATION PACKET



Model No: H616

Catalog No: H616

Pool Pump Motor, 1.5 HP, 3 Ph, 60 Hz, 208-230/460 V, 3600 RPM, M56C Frame, DP



Regal and Century are trademarks of Regal Rexnord Corporation or one of its affiliated companies.

©2022 Regal Rexnord Corporation, All Rights Reserved. MC017097E





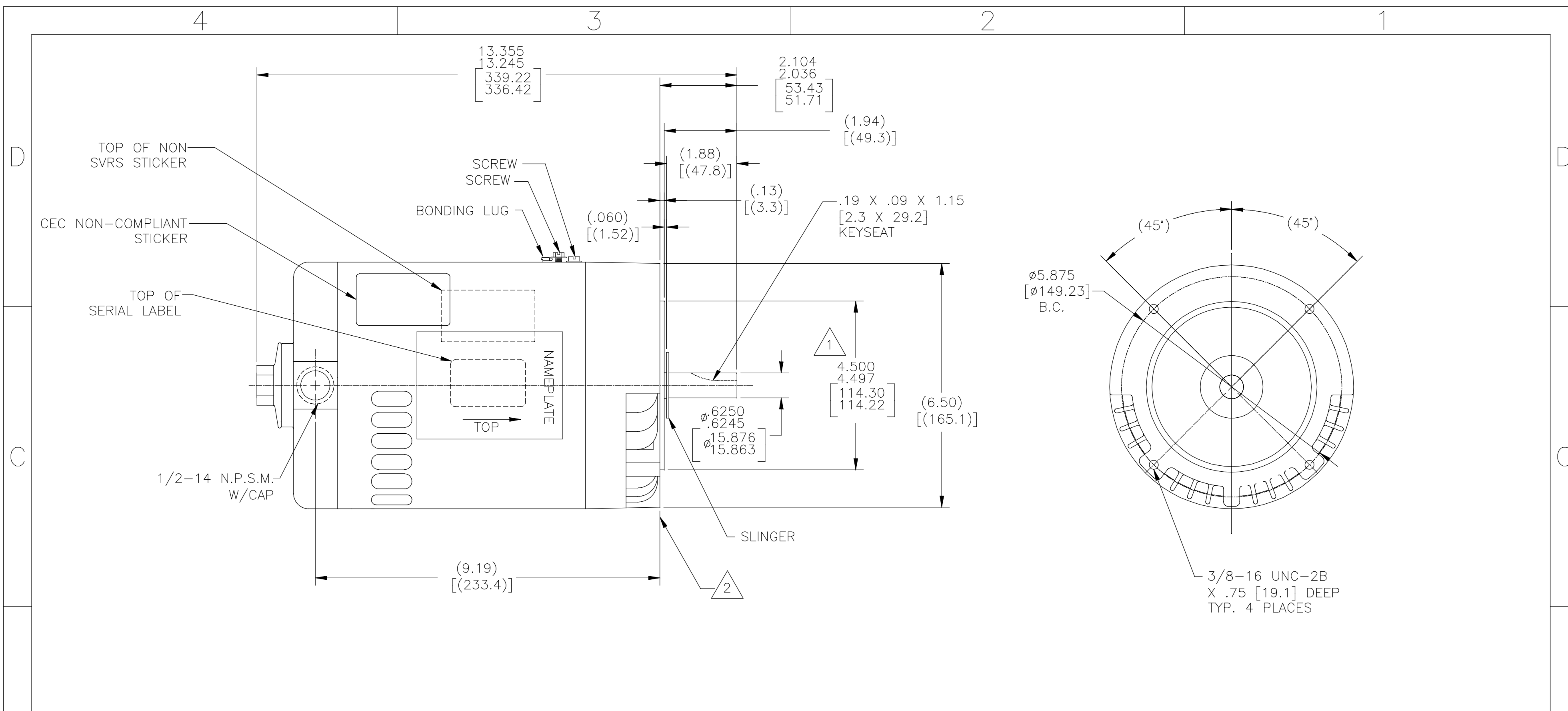
Nameplate Specifications

Output HP	1.5 Hp	Output KW	1.1 kW
Frequency	60 Hz	Voltage	208-230/460 V
Current	4.6-4.4/2.2 A	Speed	3450/2850 rpm
Service Factor	1.3	Phase	3
Duty	Continuous	Insulation Class	A
Frame	M56C	Enclosure	Drip Proof
Thermal Protection	No Protection	Ambient Temperature	40 °C
UL	Recognized	CSA	Y
Number of Speeds	1		

Technical Specifications

Electrical Type	Polyphase, Induction Type, Single Or Dual Voltage	Starting Method	Across The Line
Poles	2	Rotation	Reversible Counterclockwise
Mounting	C Face	Motor Orientation	Horizontal
Drive End Bearing	Ball	Opp Drive End Bearing	Ball
Frame Material	Rolled Steel	Shaft Type	5/8 Keyed
Overall Length	13.24 in	Frame Length	6.75 in
Shaft Diameter	0.625 in	Shaft Extension	2.07 in
Connection Drawing	18304024.PCX	Outline Drawing	H616-S01

This is an uncontrolled document once printed or downloaded and is subject to change without notice. Date Created:11/28/2022



NAMEPLATE DATA	EXTERNAL CONNECTION DIAGRAM	NOTES																														
MODEL: 151773 CUST PN: H616 HP: 1.5 SF: 1.3/1.0 ROT: RCC RPM: 3450/2850 TYPE: SC CODE: L FORM: FRAME: M 56 C VOLTS: 208-230/460 AMPS: 4.6-4.4/2.2 MAX AMPS: SF 5.6/2.8//5.4/2.7 SF AMPS: - PH: 3 HZ: 60/50 INS: A AMB: 40°C DUTY: CONT ENCLOSURE: ODP THERMALLY PROTECTED	<p>183040-24</p> <table border="1"> <thead> <tr> <th>LOW VOLTAGE</th> <th>TO REVERSE, INTER-CHANGE ANY TWO LINE LEADS.</th> <th>HIGH VOLTAGE</th> </tr> </thead> <tbody> <tr> <td>4-BROWN</td> <td></td> <td>4-BROWN</td> </tr> <tr> <td>5-ORANGE</td> <td></td> <td>7-PURPLE</td> </tr> <tr> <td>6-BLACK</td> <td></td> <td>5-ORANGE</td> </tr> <tr> <td>1-RED</td> <td>LINE 1</td> <td>8-GRAY</td> </tr> <tr> <td>7-PURPLE</td> <td></td> <td>6-BLACK</td> </tr> <tr> <td>2-WHITE</td> <td>LINE 2</td> <td>9-PINK</td> </tr> <tr> <td>8-GRAY</td> <td></td> <td>1-RED</td> </tr> <tr> <td>3-BLUE</td> <td>LINE 3</td> <td>2-WHITE</td> </tr> <tr> <td>9-PINK</td> <td></td> <td>3-BLUE</td> </tr> </tbody> </table>	LOW VOLTAGE	TO REVERSE, INTER-CHANGE ANY TWO LINE LEADS.	HIGH VOLTAGE	4-BROWN		4-BROWN	5-ORANGE		7-PURPLE	6-BLACK		5-ORANGE	1-RED	LINE 1	8-GRAY	7-PURPLE		6-BLACK	2-WHITE	LINE 2	9-PINK	8-GRAY		1-RED	3-BLUE	LINE 3	2-WHITE	9-PINK		3-BLUE	1. PILOT DIAMETER IS CONCENTRIC WITH SHAFT CENTERLINE WITHIN .004[.102] T.I.R. 2. FACE OF MOUNTING FLANGE IS PERPENDICULAR TO SHAFT CENTERLINE WITHIN .004[.102] T.I.R. 3. SHAFT RUNOUT NOT TO EXCEED .002[.051] T.I.R. 4. END PLAY NOT TO EXCEED .010[.254] MEASURED WITH NO THRUST 5. FINISH PAINT TO BE BLACK
LOW VOLTAGE	TO REVERSE, INTER-CHANGE ANY TWO LINE LEADS.	HIGH VOLTAGE																														
4-BROWN		4-BROWN																														
5-ORANGE		7-PURPLE																														
6-BLACK		5-ORANGE																														
1-RED	LINE 1	8-GRAY																														
7-PURPLE		6-BLACK																														
2-WHITE	LINE 2	9-PINK																														
8-GRAY		1-RED																														
3-BLUE	LINE 3	2-WHITE																														
9-PINK		3-BLUE																														

PERFORMANCE CURVE	APPROVED SAMPLE		
12731524			
UL COMPONENT	CSA		
FILE#	CCN#	FILE#	GUIDE#
E44549	PRGY2	LR4642	4211-01
CUSTOMER	DISTRIBUTION		

DRAWING REVISION	REVISION BY	DATE	TOLERANCES UNLESS OTHERWISE SPECIFIED	DRAWN BY:	REGAL™ Regal Beloit America, Inc.
F	P.ROJAS	04-25-2019	DEC. INCH mm ANGLE	KHR	
ECO	APPROVED BY	DATE	.XX ±0.1 [±2.5] ±0.5°	DATE:	DESCRIPTION
ECO-0165900	P.ROJAS	04-25-2019	.XX ±0.02 [±0.51]	08-09-2005	
ECO DESCRIPTION			.XXX ±0.005 [±0.127]	APPROVED BY:	OUTLINE
SEE ECO			.XXXX ±0.0005 [±0.0127]	JMW	MATERIAL
<small>COPYRIGHT REGAL BELOIT AMERICA, INC. ALL RIGHTS RESERVED. PROPRIETARY AND CONFIDENTIAL INFORMATION - THIS DOCUMENT IS THE PROPERTY OF REGAL BELOIT AMERICA, INC. (OWNER) AND CONTAINS OWNER'S PROPRIETARY INFORMATION. ANY PERSON, CORPORATION OR OTHER FIRM RECEIVING IT IS DEEMED, BY RECEIVING IT, TO AGREE THAT IT, AND/OR ANY PART OF IT, SHALL NOT BE DISCLOSED TO ANY PERSON, CORPORATION OR OTHER ENTITY, DUPLICATED, AND/OR USED, EXCEPT AS EXPRESSLY APPROVED IN WRITING IN ADVANCE BY OWNER. THIS DOCUMENT SHALL BE RETURNED TO OWNER UPON REQUEST. IT MAY BE SUBJECT TO CERTAIN RESTRICTIONS UNDER APPLICABLE EXPORT CONTROL LAWS AND REGULATIONS.</small>			REMOVE BURRS & BREAK SHARP EDGES .003/.015 [0.076/.381] X 45° CORNER FILLETS R.02 [51] MACHINED SURFACES 125/INCH 3.2/mm	DATE: 02-28-2006 REFERENCE	PROCESS/FINISH
				THIRD ANGLE PROJECTION	SIZE DWG NO
					C H616
					SHEET 1