

PRODUCT INFORMATION PACKET



Model No: H633ES
Catalog No: H633ES

General Purpose Motor, 1.0 HP, 3 Ph, 60 Hz, 230/460 V, 3600 RPM, J56C Frame, TEFC



Regal and Century are trademarks of Regal Rexnord Corporation or one of its affiliated companies.
©2022 Regal Rexnord Corporation, All Rights Reserved. MC017097E





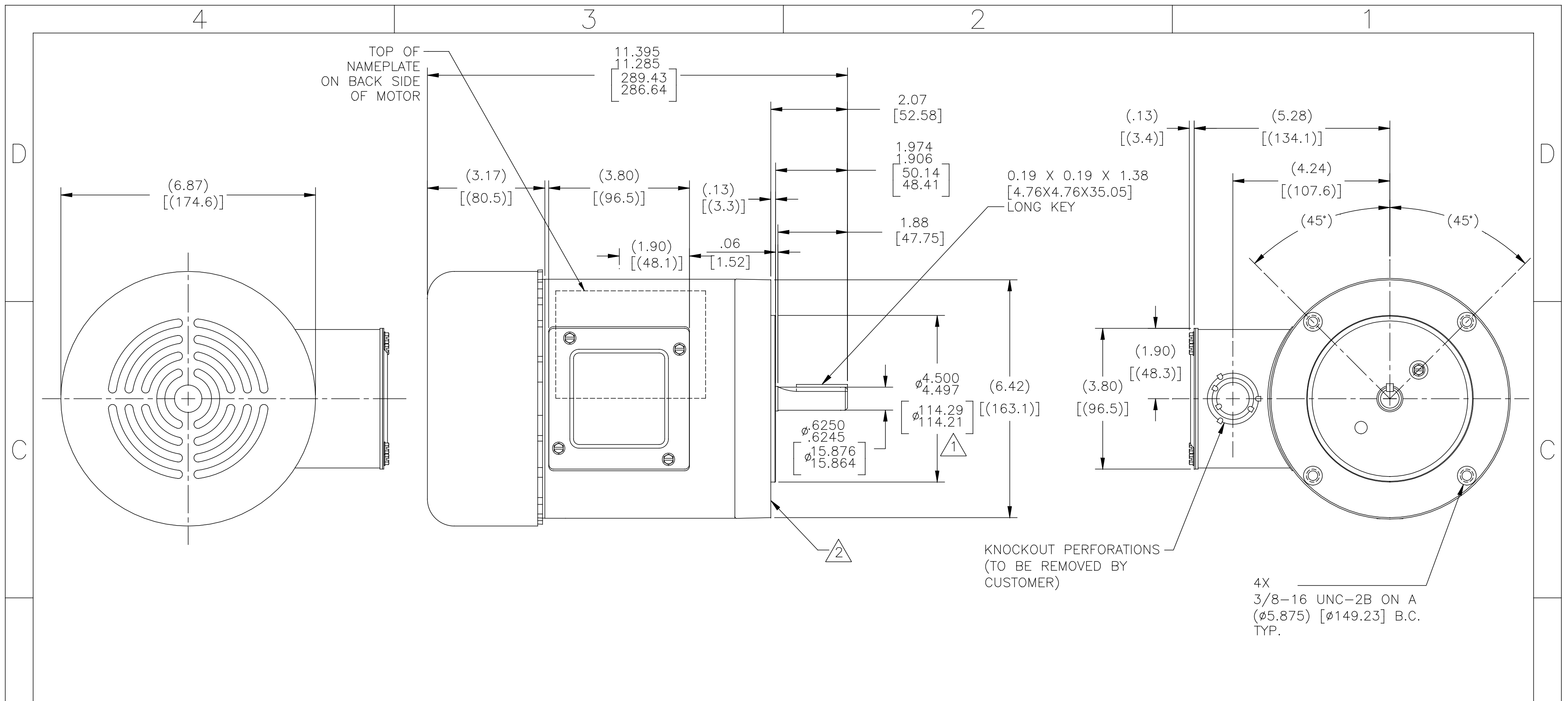
Nameplate Specifications

Output HP	1.0 Hp	Output KW	0.75 kW
Frequency	60 Hz	Voltage	230/460 V
Current	3.0/1.5 A	Speed	3450 rpm
Service Factor	1.15	Phase	3
Duty	Continuous	Insulation Class	B
Frame	J56C	Enclosure	Totally Enclosed Fan Cooled
Thermal Protection	No Protection	Ambient Temperature	40 °C
UL	Recognized	CSA	Y
CE	Y	Number of Speeds	1

Technical Specifications

Electrical Type	Polyphase, Induction Type, Single Or Dual Voltage	Starting Method	Across The Line
Poles	2	Rotation	Reversible Counterclockwise
Mounting	Round	Drive End Bearing	Ball
Opp Drive End Bearing	Ball	Frame Material	Rolled Steel
Shaft Type	Keyed	Overall Length	11.40 in
Frame Length	5.13 in	Shaft Diameter	0.625 in
Shaft Extension	2.07 in		
Outline Drawing	H633ES-S01	Connection Drawing	18304024.PCX

This is an uncontrolled document once printed or downloaded and is subject to change without notice. Date Created:11/28/2022



NAMEPLATE DATA	EXTERNAL CONNECTION DIAGRAM	NOTES
MODEL: H633ES CUST PN: P56AH84A01 HP: 1.0 SF: 1.15 ROT: RCC RPM: 3450 TYPE: SC CODE: M FORM: FRAME: J56C VOLTS: 230/460 AMPS: 3.0/1.5 MAX AMPS: - SF AMPS: 3.4/1.7 PH: 3 HZ: 60 INS: B AMB: 40°C DUTY: CONT ENCLOSURE: TEFC		<ul style="list-style-type: none"> ⚠ PILOT DIAMETER IS CONCENTRIC WITH SHAFT CENTERLINE WITHIN .004 T.I.R. ⚠ FACE OF MOUNTING FLANGE IS PERPENDICULAR TO SHAFT CENTERLINE WITHIN .004 T.I.R. 3. SHAFT RUNOUT NOT TO EXCEED .002 T.I.R. 4. END PLAY NOT TO EXCEED .010 MEASURED WITH NO THRUST 5. ALL DIMENSIONS SHOWN IN PARENTHESIS ARE REFERENCE DIMENSIONS.

PERFORMANCE CURVE	APPROVED SAMPLE		
SS0010425			
UL COMPONENT	CSA		
FILE#	CCN#	FILE#	GUIDE#
E44549	PRGY2	LR4642	4211-01
CUSTOMER	REGAL DISTRIBUTION		

DRAWING REVISION	REVISION BY	DATE	TOLERANCES UNLESS OTHERWISE SPECIFIED	DRAWN BY:	REGAL™ Regal Beloit America, Inc.		
A			DEC. INCH mm ANGLE	MEO			
ECO	APPROVED BY	DATE	.X ±0.1 [±2.5] ±0.5°	DATE:	DESCRIPTION		
ECO-99201			.XX ±0.02 [±0.51]	03/24/16			
ECO DESCRIPTION			.XXX ±0.005 [±0.127]	APPROVED BY:	MODEL-CFHP-56FR		
NEW			.XXXX ±0.0005 [±0.0127]	JDR			
<small>COPYRIGHT REGAL BELOIT AMERICA, INC. ALL RIGHTS RESERVED. PROPRIETARY AND CONFIDENTIAL INFORMATION - THIS DOCUMENT IS THE PROPERTY OF REGAL BELOIT AMERICA, INC. (OWNER) AND CONTAINS OWNER'S PROPRIETARY INFORMATION. ANY PERSON, CORPORATION OR OTHER FIRM RECEIVING IT IS DEEMED, BY RECEIVING IT, TO AGREE THAT IT, AND/OR ANY PART OF IT, SHALL NOT BE DISCLOSED TO ANY PERSON, CORPORATION OR OTHER ENTITY, DUPLICATED, AND/OR USED, EXCEPT AS EXPRESSLY APPROVED IN WRITING IN ADVANCE BY OWNER. THIS DOCUMENT SHALL BE RETURNED TO OWNER UPON REQUEST. IT MAY BE SUBJECT TO CERTAIN RESTRICTIONS UNDER APPLICABLE EXPORT CONTROL LAWS AND REGULATIONS.</small>			REMOVE BURRS & BREAK SHARP EDGES .003/.015 [0.076/.381] CORNER FILLETS .02 [51] MACHINED SURFACES 125/INCH 3.2/mm	DATE:	MATERIAL	PROCESS/FINISH	
			mm SHOWN IN [BRACKETS]	03/24/16			
				REFERENCE	THIRD ANGLE PROJECTION	SIZE DWG NO	SHEET
					C	H633ES	1