

PRODUCT INFORMATION PACKET



Model No: H662
Catalog No: H662
1.5,3450,DP,56C,3/60/200-230/460
General Purpose Pump Motors



Regal and Century are trademarks of Regal Rexnord Corporation or one of its affiliated companies.
©2021 Regal Rexnord Corporation, All Rights Reserved. MC017097E





Nameplate Specifications

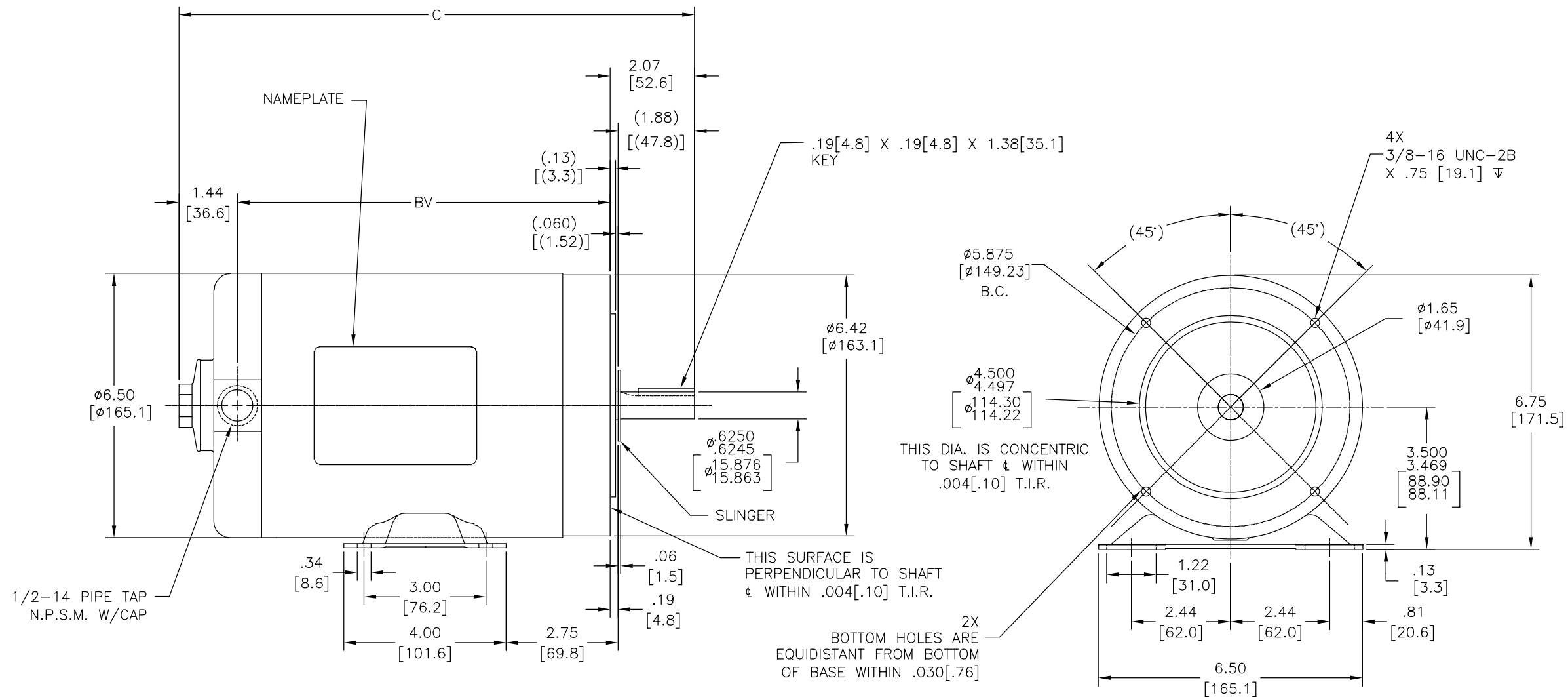
Output HP	1.5 Hp	Output KW	1.1 kW
Frequency	60 Hz	Voltage	200-230/460 V
Current	4.7-4.4/2.2 A	Speed	3450/2850 rpm
Service Factor	1.3	Phase	3
Duty	Continuous	Insulation Class	B
Frame	J56C	Enclosure	Drip Proof
Thermal Protection	None	Ambient Temperature	40 °C
UL	Recognized	CSA	Y
CE	N	Number of Speeds	1

Technical Specifications

Electrical Type	Polyphase, Induction Type, Single Or Dual Voltage	Starting Method	Across The Line
Poles	2	Rotation	Reversible Counterclockwise
Mounting	Rigid Base	Drive End Bearing	Ball
Opp Drive End Bearing	Ball	Frame Material	Rolled Steel
Shaft Type	Keyed	Overall Length	12.46 in
Frame Length	5.13 in	Shaft Diameter	0.625 in
Shaft Extension	2.07 in		
Outline Drawing	154666-S01	Connection Drawing	18304024.PCX

This is an uncontrolled document once printed or downloaded and is subject to change without notice. Date Created:10/11/2021

REV	ECO	REV BY	DATE	APPD	DATE
D	0025380	G. ALVIDREZ	04-13-2012	D. BALDERRAMA	04-13-2012



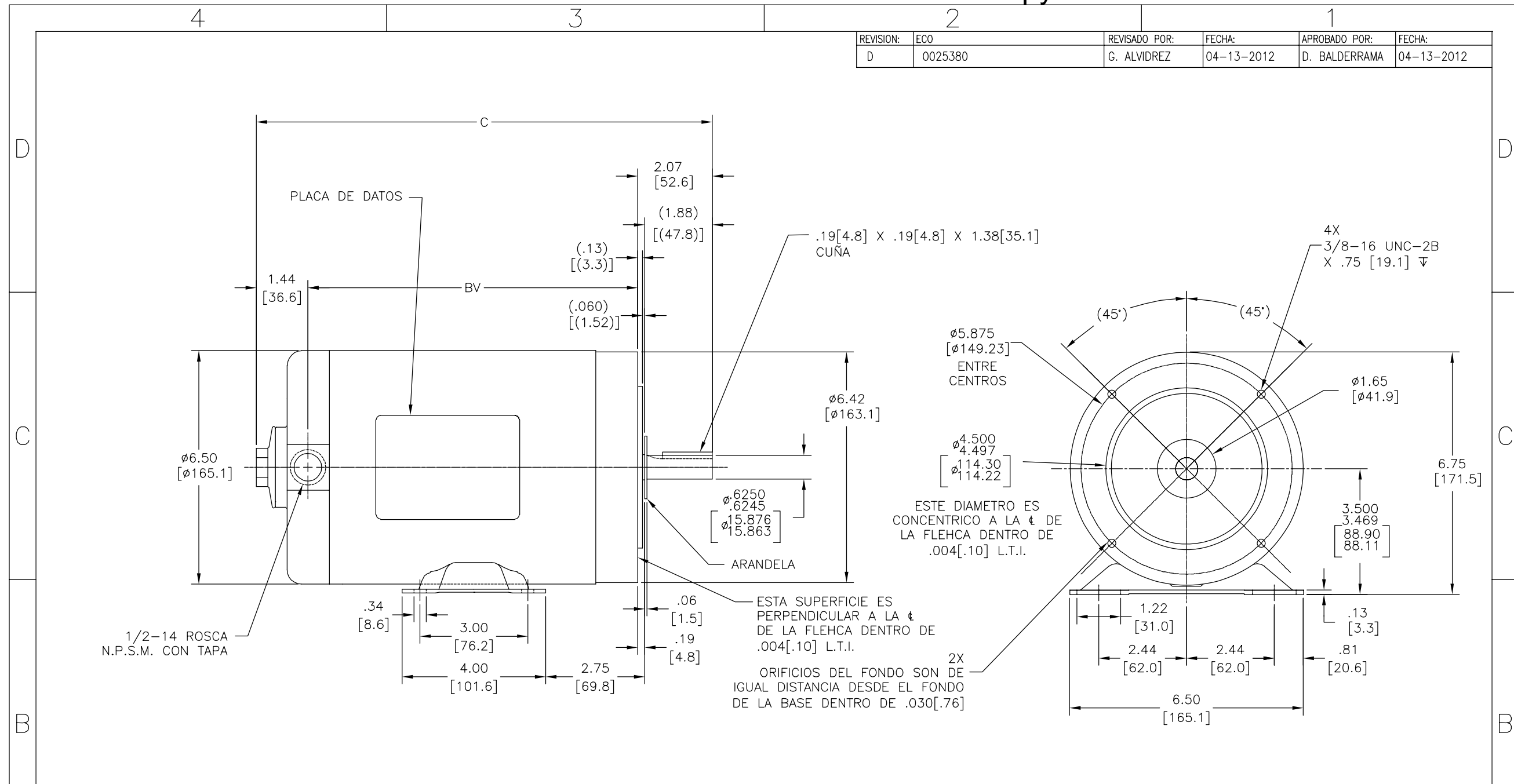
D/S	PART NUMBER	REFERENCE			C	BV
		TYPE	FRAME SIZE	FORM		
4	15466601	SC	L56C	K	12.19[309.6]	8.68[220.5]
4	15466602	SC	J56C	K	11.06[280.9]	7.55[191.8]
4	15466603	SC	K56C	K	11.44[290.6]	7.93[201.4]
4	15466604	SC	B56C	K	9.81[249.2]	6.30[160.0]
4	15466605	SC	H56C	K	10.06[255.5]	6.55[166.4]

GEOMETRIC CHARACTERISTICS & SYMBOLS
 □ FLATNESS
 — STRAIGHTNESS
 < ANGLARITY
 ⊥ PERPENDICULARITY (SQUARENESS)
 // PARALLELISM
 ○ ROUNDNESS (CIRCULARITY)
 ⌀ CYLINDRICITY
 △ PROFILE OF ANY SURFACE
 ~ PROFILE OF ANY LINE
 ↗ RUNOUT
 ⊕ TRUE POSITION
 ⊙ CONCENTRICITY
 = SYMMETRY
 ASME Y14.5M 1994

UNLESS OTHERWISE SPECIFIED
 DIM. TOLERANCES ARE AS FOLLOWS:
 INCH X XX XXX XXXX
 mm ±0.5 ±0.13 ±0.013
 ANG. ±50 DEG
 REMOVE BURRS & BREAK SHARP EDGES:
 INCH .003-.015 mm 0.1-0.4
 CORNER FILLETS TO:
 INCH .020 mm 0.5
 MACHINE SURFACES:
 INCH 125 mm 3.2
 METRIC DIMS. SHOWN IN [BRACKETS]

DR BY: SAS 04-05-1978
 APPD: [Signature]
 THIRD ANGLE PROJECTION
 EDS DATE 11-11-2011
 FORMAT REV G
 CONFIDENTIAL: THIS DRAWING AND ITS INFORMATION ARE THE EXCLUSIVE AND CONFIDENTIAL PROPERTY OF REGAL-BELOIT CORPORATION AND ARE NOT TO BE DISCLOSED, DUPLICATED, DISTRIBUTED OR OTHERWISE USED WITHOUT THE WRITTEN CONSENT OF REGAL-BELOIT CORPORATION. -ALL RIGHTS RESERVED.

REGAL-BELOIT CORPORATION
 DESCRIPTION: OUTLINE
 SIZE: C DWG NO: 154666
 SCALE: NONE SHEET: 1



REVISION:	ECO	REVISADO POR:	FECHA:	APROBADO POR:	FECHA:
D	0025380	G. ALVIDREZ	04-13-2012	D. BALDERRAMA	04-13-2012

D/S	NUMERO DE PARTE	REFERENCIA			C	BV
		TIPO	TAMAÑO CARCASA	FORMA		
4	15466601	SC	L56C	K	12.19[309.6]	8.68[220.5]
4	15466602	SC	J56C	K	11.06[280.9]	7.55[191.8]
4	15466603	SC	K56C	K	11.44[290.6]	7.93[201.4]
4	15466604	SC	B56C	K	9.81[249.2]	6.30[160.0]
4	15466605	SC	H56C	K	10.06[255.5]	6.55[166.4]

CARACTERISTICAS DE GEOMETRIA Y SIMBOLOS

- PLANICIDAD
- RECTITUD
- ∠ ANGULARIDAD
- ⊥ PERPENDICULARIDAD (A ESCUADRA)
- ∥ PARALELISMO
- REDONDEZ (CIRCULARIDAD)
- ⊘ CILINDRICIDAD
- △ PERFIL DE CUALQUIER SUPERFICIE
- ⌒ PERFIL DE CUALQUIER LINEA
- ↑ VARIACION
- ⊕ POSICION REAL
- ◎ CONCENTRICIDAD
- ≡ SIMETRIA

ASME Y14.5M 1994

A MENOS QUE SE ESPECIFIQUE DE OTRA MANERA, LAS TOLERANCIAS DE LAS DIMS. SON LAS SIGUIENTES:

PULG ±.1 ±.02 ±.005 ±.0005
 mm ±0.5 ±0.13 ±0.013

ANG. ±.50 GRADOS

ELIMINAR REBABAS Y ORILLAS FILOSAS DEL BORDE.

PULG .003-.015 mm 0.1-0.4

FILETEAR ESQUINA: PULG .020 mm 0.5

MAQUINAR SUPERFICIES

PULG 125 mm 3.2

DIMS METRICAS MOSTRADAS [PARENTESIS]

DIBUJADO POR: SAS 04-05-1978

APROBADO POR:

TERCER ANGULO DE PROYECCION

FECHA EDS: 11-11-2011

REV. FORMATO: G

CONFIDENCIAL: ESTE DIBUJO Y SU INFORMACION SON PROPIEDAD DE USO EXCLUSIVO Y CONFIDENCIAL DE REGAL-BELOIT CORPORATION. Y NO DEBERAN SER REVELADOS, DUPLICADOS, DISTRIBUIDOS O USARSE DE OTRA MANERA SIN EL CONSENTIMIENTO ESCRITO DE REGAL-BELOIT CORPORATION. -TODOS LOS DERECHOS RESERVADOS.

REGAL-BELOIT CORPORATION

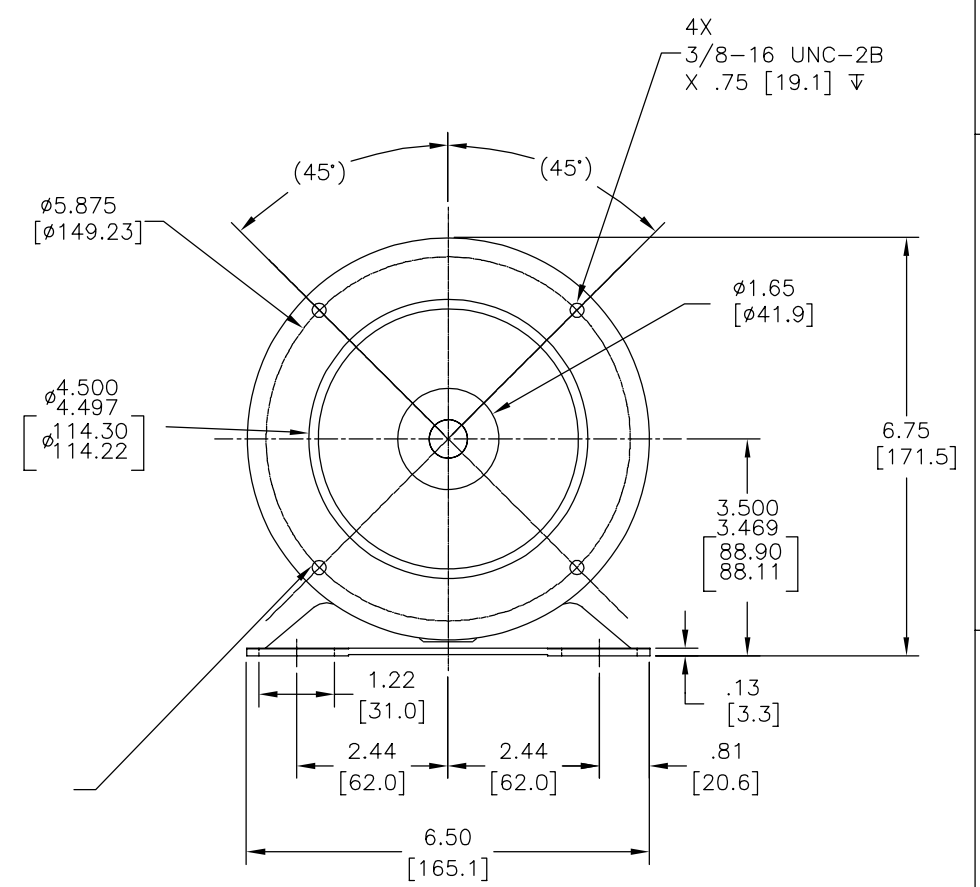
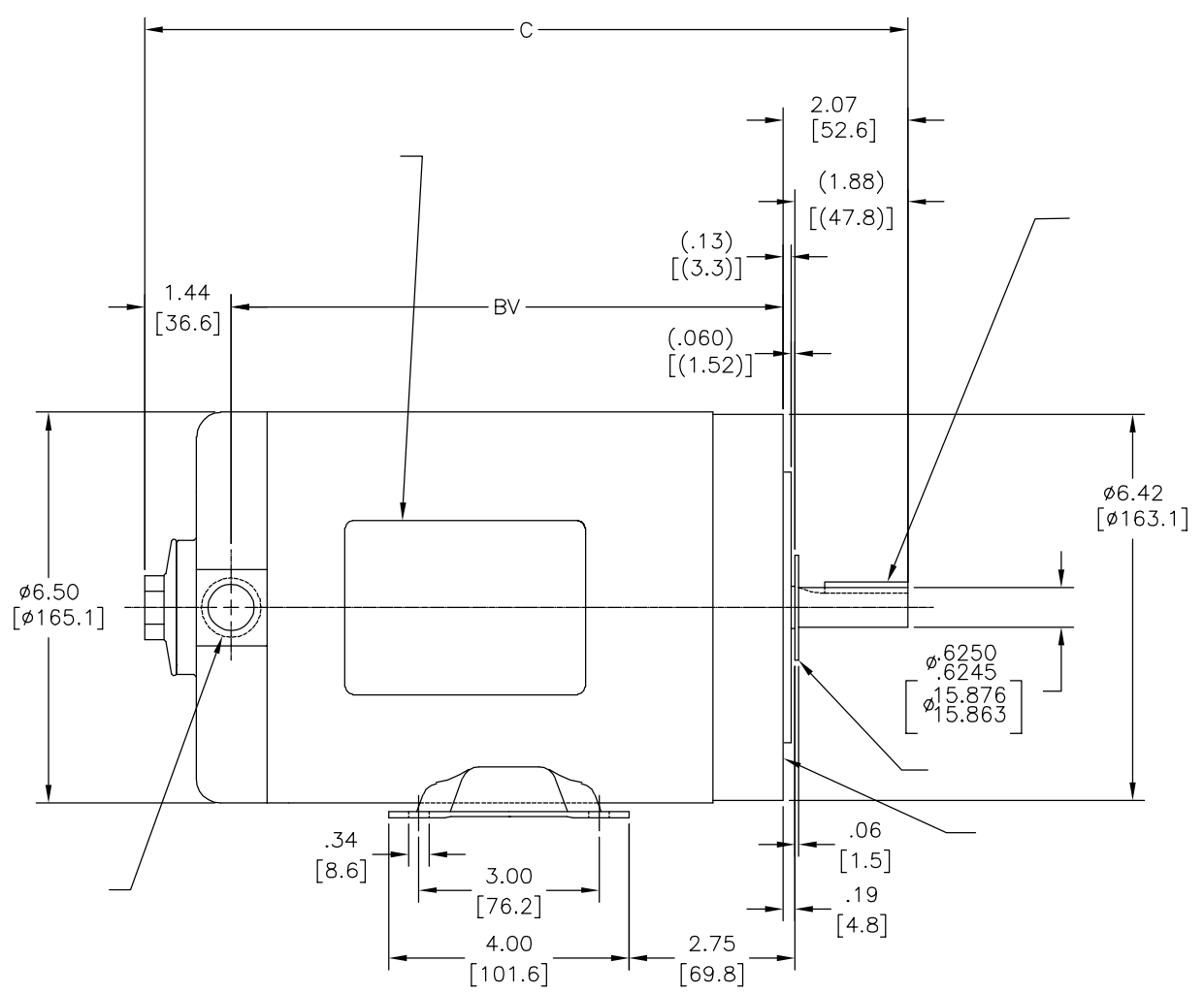
DESCRIPCION: OUTLINE

TAMAÑO: C NUMERO DE DIBUJO: 154666

ESCALA: NONE HOJA: 1

4 3 2 1

版本	ECO	编制	日期	批准	日期
D	0025380	G. ALVIDREZ	04-13-2012	D. BALDERRAMA	04-13-2012



D/S					C	BV
4	15466601	SC	L56C	K	12.19[309.6]	8.68[220.5]
4	15466602	SC	J56C	K	11.06[280.9]	7.55[191.8]
4	15466603	SC	K56C	K	11.44[290.6]	7.93[201.4]
4	15466604	SC	B56C	K	9.81[249.2]	6.30[160.0]
4	15466605	SC	H56C	K	10.06[255.5]	6.55[166.4]

形位公差
 □ 平面度
 — 直线度
 ∠ 倾斜度
 ⊥ 垂直度
 ∥ 平行度
 ○ 圆度
 ⊙ 圆柱度
 面轮廓度
 线轮廓度
 圆跳动
 位置度
 同轴度
 对称度

除另有注明
 尺寸公差如下:
 英寸 X XX XXX XXXX
 毫米 ±.1 ±.02 ±.005 ±.0005
 英寸 ±.5 ±0.13 ±0.013
 角度 ±.50 度
 清理毛刺和尖棱
 英寸 .003-.015 毫米 0.1-0.4
 内圆角
 英寸 .020 毫米 0.5
 表面粗糙度
 英制 125 米制 3.2
 米制尺寸显示在 []

ASME Y14.5M 1994

绘图: SAS
 批准: 04-05-1978
 第三角投影
 图纸格式发布日期 11-11-2011
 图纸格式版本 G
 机密: 本图纸及相关信息所有权归REGAL-BELOIT CORPORATION
 未经REGAL-BELOIT CORPORATION书面授权, 不得泄露、
 复制、传播或作其他用途。一版权所有

REGAL-BELOIT CORPORATION

名称: OUTLINE

图幅: C 图号: 154666

比例: NONE 页号: 1

4 3 2 1