

PRODUCT INFORMATION PACKET



Model No: H733
Catalog No: H733

General Purpose Pump Motor, 2.0 HP, 3 Ph, 60/50 Hz, 200-230/460 V, 3600 RPM, N56J Frame, DP



Regal and Century are trademarks of Regal Rexnord Corporation or one of its affiliated companies.
©2026 Regal Rexnord Corporation, All Rights Reserved. MC017097E





Nameplate Specifications

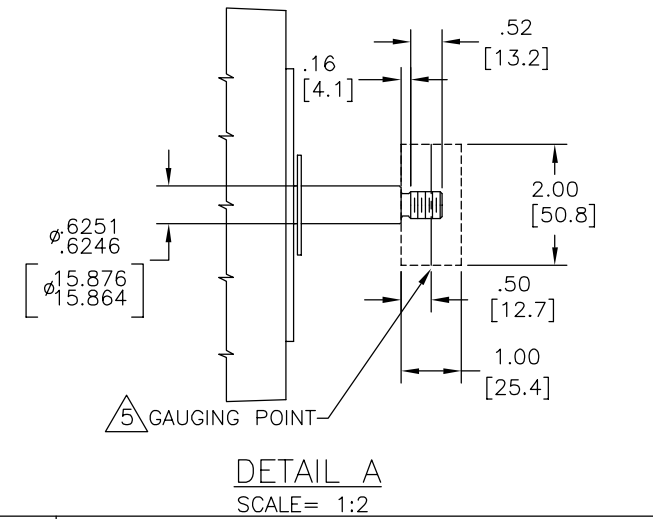
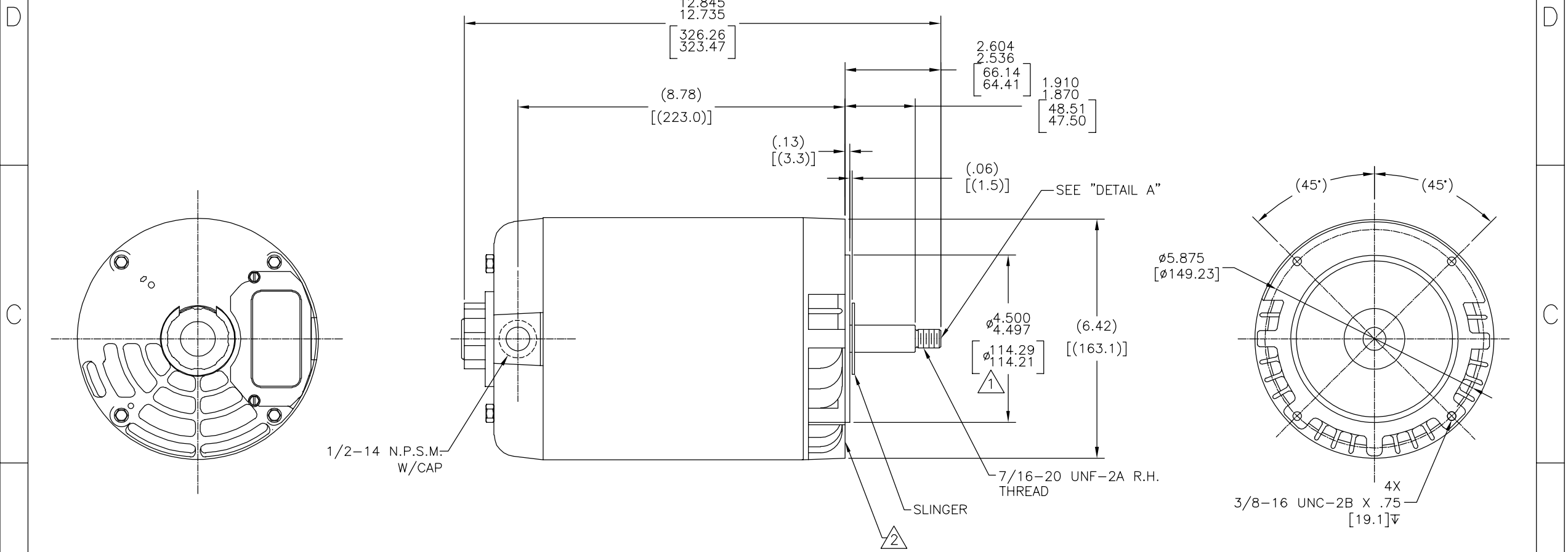
Phase	3	Output HP	2.0 Hp
Output KW	1.5 kW	Voltage	200-230/460 V
Speed	3450/2850 rpm	Service Factor	1.20
Frame	N56J	Enclosure	Drip Proof
Thermal Protection	No Protection	Ambient Temperature	40 °C
Frequency	60/50 Hz	Current	SF 6.8-6.6/3.3 A
Duty	Continuous	Insulation Class	B
UL	Recognized	CSA	Y
CE	N	Number of Speeds	1

Technical Specifications

Electrical Type	Polyphase, Induction Type, Single Or Dual Voltage	Starting Method	Across The Line
Poles	2	Rotation	Reversible Clockwise
Mounting	Round	Drive End Bearing	Ball
Opp Drive End Bearing	Ball	Frame Material	Rolled Steel
Shaft Type	Threaded	Overall Length	12.85 in
Frame Length	7.25 in	Shaft Diameter	0.625 in
Shaft Extension	2.60 in		
Connection Drawing	18304024.PCX	Outline Drawing	12686-002-S01

This is an uncontrolled document once printed or downloaded and is subject to change without notice. Date Created:03/20/2026

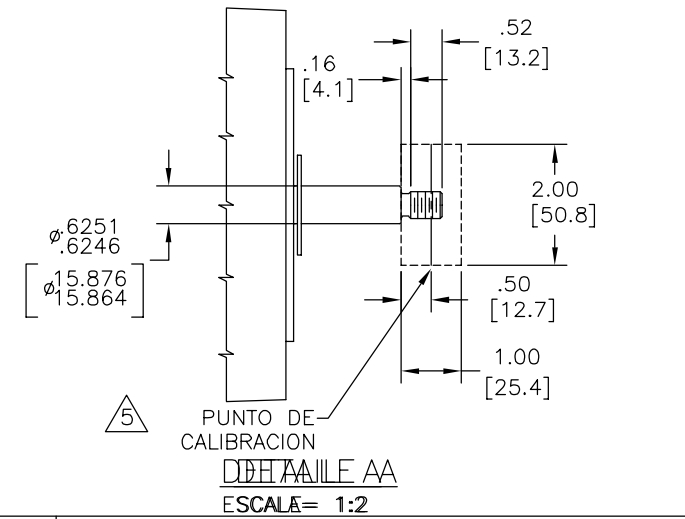
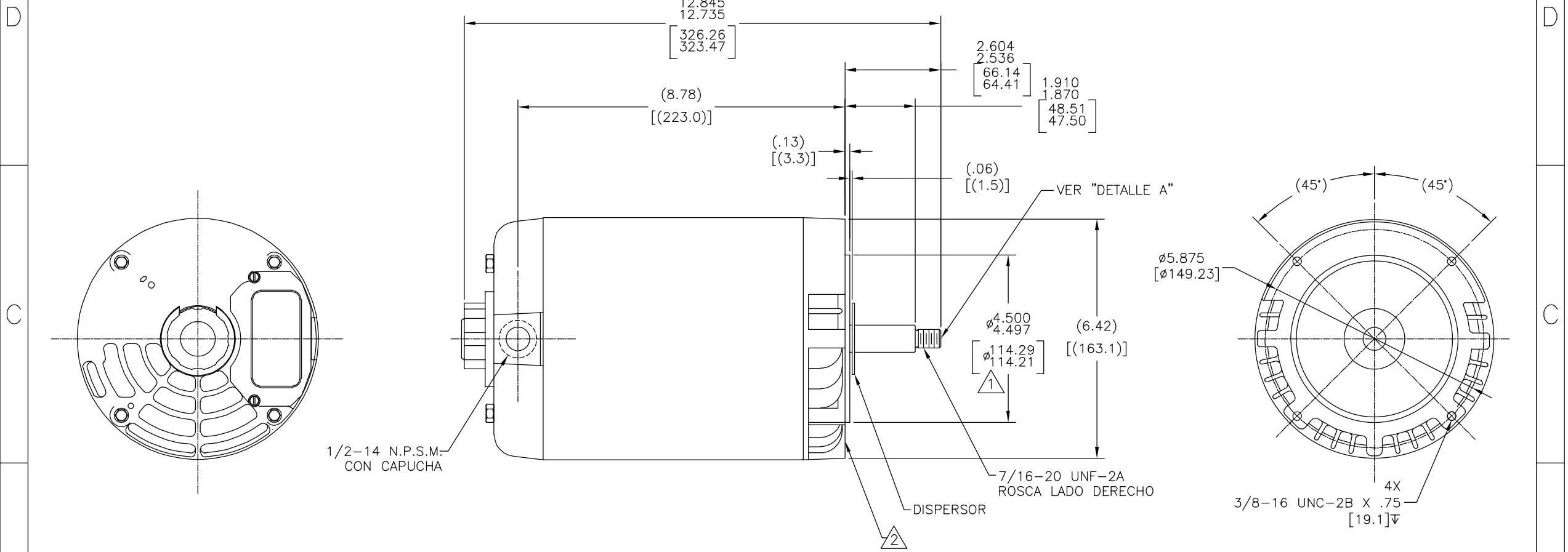
REV	ECO	REV BY	DATE	APPD	DATE
D	0043365	G. RODRIGUEZ	01-16-2014	TERESITA REYES	01-16-2014



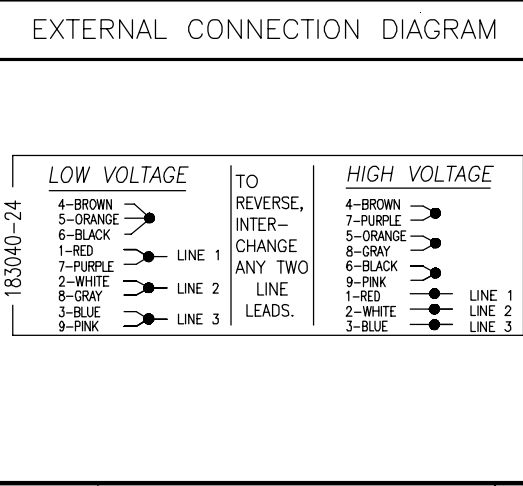
NAMEPLATE DATA	EXTERNAL CONNECTION DIAGRAM	NOTES						
MODEL: 182591 CUST PN: H733 HP: 2.0 SF: 1.20 ROT: RCW RPM: 3450/2850 TYPE: SC CODE: K FORM: FRAME: N 56 J VOLTS: 200-230/460 AMPS: SF 6.8-6.6/3.3 MAX AMPS: SF AMPS: - PH: 3 HZ: 60/50 INS: B AMB: 40°C DUTY: CONT ENCLOSURE: ODP THERMALLY PROTECTED	<table border="1"> <tr> <th>LOW VOLTAGE</th> <th>TO</th> <th>HIGH VOLTAGE</th> </tr> <tr> <td> 4-BROWN 5-ORANGE 6-BLACK 1-RED 7-PURPLE 2-WHITE 8-GRAY 3-BLUE 9-PINK </td> <td> REVERSE, INTER- CHANGE ANY TWO LINE LEADS. </td> <td> 4-BROWN 7-PURPLE 5-ORANGE 8-GRAY 6-BLACK 9-PINK 1-RED 2-WHITE 3-BLUE </td> </tr> </table>	LOW VOLTAGE	TO	HIGH VOLTAGE	4-BROWN 5-ORANGE 6-BLACK 1-RED 7-PURPLE 2-WHITE 8-GRAY 3-BLUE 9-PINK	REVERSE, INTER- CHANGE ANY TWO LINE LEADS.	4-BROWN 7-PURPLE 5-ORANGE 8-GRAY 6-BLACK 9-PINK 1-RED 2-WHITE 3-BLUE	△ PILOT DIAMETER IS CONCENTRIC WITH SHAFT \pm WITHIN .004[.10] T.I.R. △ FACE OF MOUNTING FLANGE IS PERPENDICULAR TO SHAFT \pm WITHIN .004[.10] T.I.R. 3. SHAFT RUNOUT NOT TO EXCEED .002[.05] T.I.R. 4. FOR THREADED SHAFT EXT. MATING PARTS SHOULD BE RELIEVED ONE THREAD TO CLEAR FILLET. △ FOR THREADED SHAFT EXT. ECCENTRICITY OF THREADED PORTION OF SHAFT IS HELD WITHIN .004[.10] TOTAL GAGE READING WITH THE INDICATOR ON O.D. OF GROUND RING AS SHOWN. THE GAGE BEING STATIONARY WITH RESPECT TO THE ROTOR. 6. END PLAY NOT TO EXCEED .010[.25] MEASURED WITH NO THRUST 7. ALL DIMENSIONS SHOWN IN PARENTHESIS ARE REFERENCE DIMENSIONS.
LOW VOLTAGE	TO	HIGH VOLTAGE						
4-BROWN 5-ORANGE 6-BLACK 1-RED 7-PURPLE 2-WHITE 8-GRAY 3-BLUE 9-PINK	REVERSE, INTER- CHANGE ANY TWO LINE LEADS.	4-BROWN 7-PURPLE 5-ORANGE 8-GRAY 6-BLACK 9-PINK 1-RED 2-WHITE 3-BLUE						

PERFORMANCE CURVE	APPROVED SAMPLE	GEOMETRIC CHARACTERISTICS & SYMBOLS	UNLESS OTHERWISE SPECIFIED DIM. TOLERANCES ARE AS FOLLOWS:	DR BY: KHR	09-07-2005	REGAL-BELOIT CORPORATION
11506522	CSA	□ FLATNESS - STRAIGHTNESS < ANGLARITY ⊥ PERPENDICULARITY (SQUARENESS) // PARALLELISM ○ ROUNDNESS (CIRCULARITY) ∅ CYLINDRICITY △ PROFILE OF ANY SURFACE ∩ PROFILE OF ANY LINE R RUNDOUT ⊕ TRUE POSITION ⊙ CONCENTRICITY = SYMMETRY	INCH \pm .1 \pm .02 \pm .005 \pm .0005 mm \pm 0.5 \pm 0.13 \pm 0.013 ANG. \pm .50 DEG REMOVE BURRS & BREAK SHARP EDGES: INCH .003-.015 mm 0.1-0.4 CORNER FILLETS TO: INCH .020 mm 0.5 MACHINE SURFACES: INCH \sqrt mm \sqrt	APPD:	EDS DATE 11-11-2011	
UL COMPONENT	FILE#	FILE#	GUIDE#	THIRD ANGLE PROJECTION	FORMAT REV H	MODEL-CFHP-56FR OUTLINE
CUSTOMER	DISTRIBUTION	ASME Y14.5M 1994	METRIC DIMS. SHOWN IN [BRACKETS]	CONFIDENTIAL: THIS DRAWING AND ITS INFORMATION ARE THE EXCLUSIVE AND CONFIDENTIAL PROPERTY OF REGAL-BELOIT CORPORATION AND ARE NOT TO BE DISCLOSED, DUPLICATED, DISTRIBUTED OR OTHERWISE USED WITHOUT THE WRITTEN CONSENT OF REGAL-BELOIT CORPORATION. -ALL RIGHTS RESERVED.	SCALE NONE	DWG NO 12686-002
						SHEET 1

REVISION:	ECO	REVISADO POR:	FECHA:	APROBADO POR:	FECHA:
D	0043365	G. RODRIGUEZ	01-16-2014	TERESITA REYES	01-16-2014



NAMEPLATE DATA	
MODEL: 182591	CUST PN: H733
HP: 2.0	SF: 1.20
ROT: RCW	
RPM: 3450/2850	
TYPE: SC	CODE: K
FORM:	FRAME: N 56 J
VOLTS: 200-230/460	
AMPS: SF 6.8-6.6/3.3	
MAX AMPS:	
SF AMPS: -	
PH: 3	HZ: 60/50
INS: B	AMB: 40°C
DUTY: CONT	
ENCLOSURE: ODP	
THERMALLY PROTECTED	



NOTES

△ EL DIAMETRO DEL PILOTO ES CONCENTRICO AL t DE LA FLECHA ENTRE .004[.10] L.T.I.

△ BORDE DE LA CARA DEL MONTAJE ES PERPENDICULAR AL t DE LA FLECHA ENTRE .004[.10] L.T.I.

3. LA OSCILACION DE FLECHA NO DEBE EXCEDER .002[.05] L.T.I.

4. PARA ROSCADO DE EXT DE FLECHA LAS PARTES DEBEN SER RELEVADAS, ROSACADO PARA LIMPIAR EL FILETE.

△ PARA EXTENSION DE ROSCADO DE FLECHA LA EXCENTRICIDAD DE PARTE DEL ROSCADO SE MANTIENE ENTRE .004[.10] LECTURA TOTAL DEL INDICADOR ENTRE EL INDICADOR EN UN DIAMETRO EXTERNO DE ANILLO DE TIERRA COMO SE MUESTRA EL INDICADOR ESTA FIJO CON RESPECTO AL ROTOR.

6. JUEGO AXIAL NO EXCEDE .010[.25] MEDIDO SIN EMPUJE.

7. TODAS LAS DIMENSIONES MOSTRADAS EN PARENTESIS SON DIMENSIONES DE REFERENCIA.

PERFORMANCE CURVE	APPROVED SAMPLE		
11506522			
UL COMPONENT	CSA		
FILE#	CCN#	FILE#	GUIDE#
E44549	PRGY2	LR4642	4211-01
CUSTOMER	DISTRIBUTION		

CARACTERISTICAS DE GEOMETRIA Y SIMBOLOS

∇ PLANICIDAD

∟ RECTITUD

∠ ANGULARIDAD

⊥ PERPENDICULARIDAD (A ESCUADRA)

// PARALELISMO

○ REDONDEZ (CIRCULARIDAD)

∅ CILINDRICIDAD

△ PERFIL DE CUALQUIER SUPERFICIE

∩ PERFIL DE CUALQUIER LINEA

∩ VARIACION

⊕ POSICION REAL

⊙ CONCENTRICIDAD

= SIMETRIA

ASME Y14.5M 1994

A MENOS QUE SE ESPECIFIQUE DE OTRA MANERA, LAS TOLERANCIAS DE LAS DIMS; SON LAS SIGUIENTES:

PULG ±.1 ±.02 ±.005 ±.0005

mm ±0.5 ±0.13 ±0.013

ANG. ±.50 GRADOS

ELIMINAR REBABAS Y ORILLAS FILOSAS DEL BORDE.

PULG .003-.015 mm 0.1-0.4

FILETEAR ESQUINA: PULG .020 mm 0.5

MAQUINAR SUPERFICIES

PULG 125 mm 3.2

DIMS METRICAS MOSTRADAS [PARENTESIS]

DIBUJADO POR: KHR

09-07-2005

APROBADO POR:

TERCER ANGULO DE PROYECCION

FECHA EDS: 11-11-2011

REV. FORMATO: H

CONFIDENCIAL: ESTE DIBUJO Y SU INFORMACION SON PROPIEDAD DE USO EXCLUSIVO Y CONFIDENCIAL DE REGAL-BELOIT CORPORATION. Y NO DEBERAN SER REVELADOS, DUPLICADOS, DISTRIBUIDOS O USARSE DE OTRA MANERA SIN EL CONSENTIMIENTO ESCRITO DE REGAL-BELOIT CORPORATION. -TODOS LOS DERECHOS RESERVADOS.

REGAL REGAL-BELOIT CORPORATION

DESCRIPCION: MODEL-CFHP-56FR OUTLINE

TAMAÑO: C NUMERO DE DIBUJO: 12686-002

ESCALA: NONE HOJA: 1