

PRODUCT INFORMATION PACKET



Model No: H742
Catalog No: H742
3.0 HP General Purpose Motor, 3 phase, 3600 RPM, 200-230/460 V, 56C Frame, ODP
General Purpose Motors



Regal and Century are trademarks of Regal Rexnord Corporation or one of its affiliated companies.
©2021 Regal Rexnord Corporation, All Rights Reserved. MC017097E





Nameplate Specifications

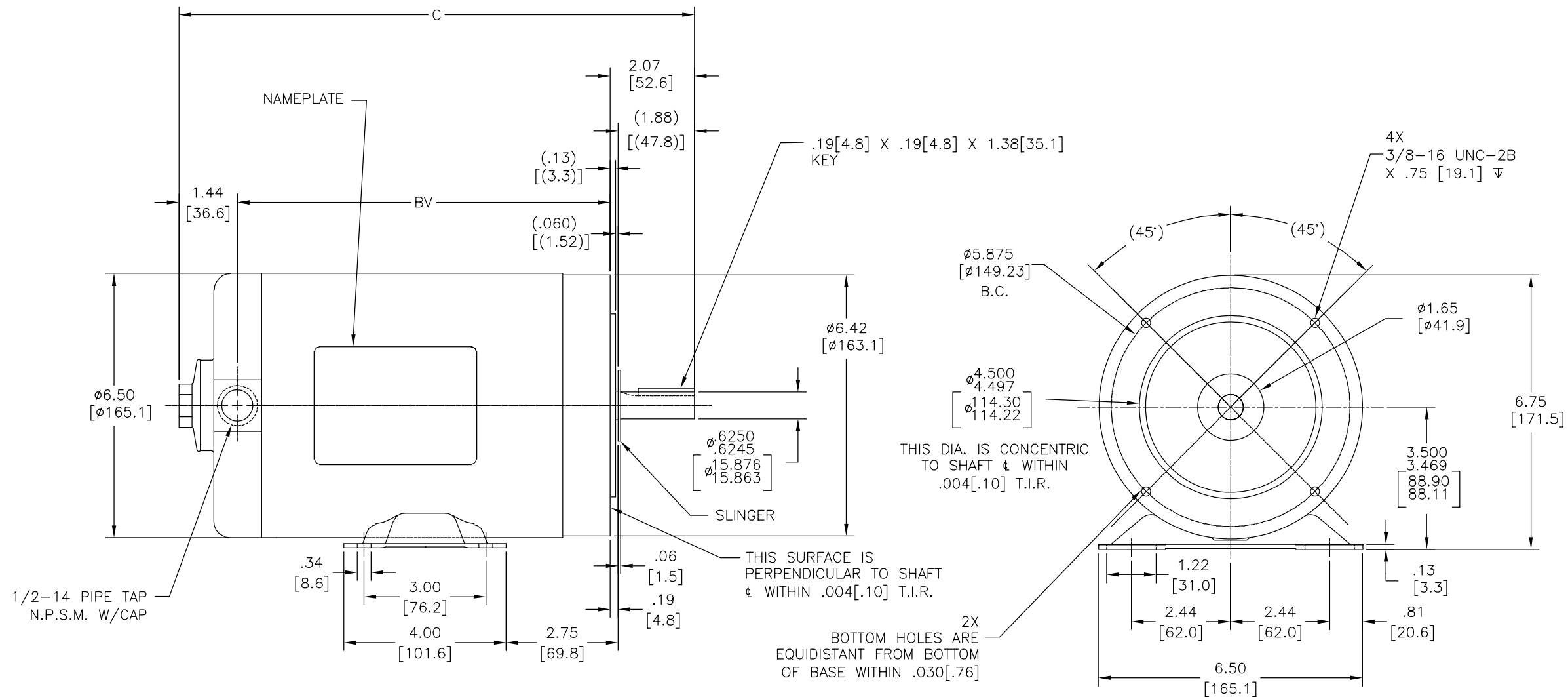
Output HP	3.0 Hp	Output KW	2.2 kW
Frequency	60 Hz	Voltage	200-230/460 V
Current	9.0-8.6/4.3 A	Speed	3450 rpm
Service Factor	1.15	Phase	3
Duty	Continuous	Insulation Class	B
Frame	L56C	Enclosure	Drip Proof
Thermal Protection	None	Ambient Temperature	40 °C
UL	Recognized	CSA	Y
CE	N	Number of Speeds	1

Technical Specifications

Electrical Type	Polyphase, Induction Type, Single Or Dual Voltage	Starting Method	Across The Line
Poles	2	Rotation	Reversible Counterclockwise
Mounting	Rigid Base	Drive End Bearing	Ball
Opp Drive End Bearing	Ball	Frame Material	Rolled Steel
Shaft Type	Keyed	Overall Length	14.03 in
Frame Length	6.25 in	Shaft Diameter	0.625 in
Shaft Extension	1.94 in		
Connection Drawing	18304024.PCX	Outline Drawing	154666-S01

This is an uncontrolled document once printed or downloaded and is subject to change without notice. Date Created:10/11/2021

REV	ECO	REV BY	DATE	APPD	DATE
D	0025380	G. ALVIDREZ	04-13-2012	D. BALDERRAMA	04-13-2012



D/S	PART NUMBER	REFERENCE			C	BV
		TYPE	FRAME SIZE	FORM		
4	15466601	SC	L56C	K	12.19[309.6]	8.68[220.5]
4	15466602	SC	J56C	K	11.06[280.9]	7.55[191.8]
4	15466603	SC	K56C	K	11.44[290.6]	7.93[201.4]
4	15466604	SC	B56C	K	9.81[249.2]	6.30[160.0]
4	15466605	SC	H56C	K	10.06[255.5]	6.55[166.4]

GEOMETRIC CHARACTERISTICS & SYMBOLS

- ▭ FLATNESS
- STRAIGHTNESS
- ∠ ANGULARITY
- ⊥ PERPENDICULARITY (SQUARENESS)
- ∥ PARALLELISM
- ROUNDNESS (CIRCULARITY)
- ⊘ CYLINDRICITY
- △ PROFILE OF ANY SURFACE
- ⌒ PROFILE OF ANY LINE
- ↗ RUNOUT
- ⊕ TRUE POSITION
- ◎ CONCENTRICITY
- ≡ SYMMETRY

ASME Y14.5M 1994

UNLESS OTHERWISE SPECIFIED
DIM. TOLERANCES ARE AS FOLLOWS:

INCH X XX XXX XXXX
mm ±0.5 ±0.13 ±0.013

ANG. ±50 DEG

REMOVE BURRS & BREAK SHARP EDGES:
INCH .003-.015 mm 0.1-0.4

CORNER FILLETS TO:
INCH .020 mm 0.5

MACHINE SURFACES:
INCH 125 mm 3.2

METRIC DIMS. SHOWN IN [BRACKETS]

DR BY: SAS 04-05-1978

APPD:

THIRD ANGLE PROJECTION

EDS DATE 11-11-2011
FORMAT REV G

CONFIDENTIAL: THIS DRAWING AND ITS INFORMATION ARE THE EXCLUSIVE AND CONFIDENTIAL PROPERTY OF REGAL-BELOIT CORPORATION AND ARE NOT TO BE DISCLOSED, DUPLICATED, DISTRIBUTED OR OTHERWISE USED WITHOUT THE WRITTEN CONSENT OF REGAL-BELOIT CORPORATION. -ALL RIGHTS RESERVED.

REGAL-BELOIT CORPORATION

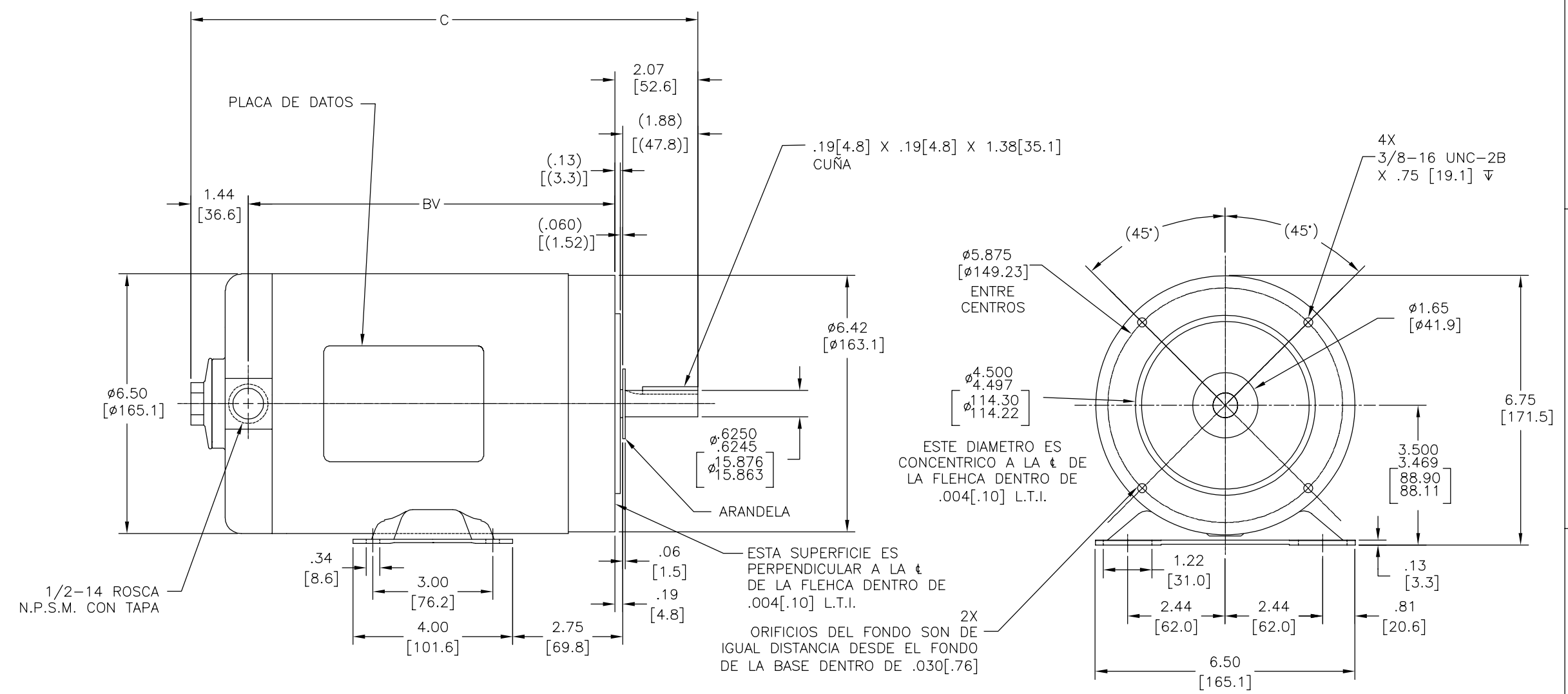
DESCRIPTION: **OUTLINE**

SIZE: C DWG NO: 154666

SCALE: NONE SHEET: 1

4 3 2 1

REVISION:	ECO	REVISADO POR:	FECHA:	APROBADO POR:	FECHA:
D	0025380	G. ALVIDREZ	04-13-2012	D. BALDERRAMA	04-13-2012



D/S	NUMERO DE PARTE	REFERENCIA			C	BV
		TIPO	TAMAÑO CARCASA	FORMA		
4	15466601	SC	L56C	K	12.19[309.6]	8.68[220.5]
4	15466602	SC	J56C	K	11.06[280.9]	7.55[191.8]
4	15466603	SC	K56C	K	11.44[290.6]	7.93[201.4]
4	15466604	SC	B56C	K	9.81[249.2]	6.30[160.0]
4	15466605	SC	H56C	K	10.06[255.5]	6.55[166.4]

CARACTERISTICAS DE GEOMETRIA Y SIMBOLOS
 ▽ PLANICIDAD
 — RECTITUD
 < ANGULARIDAD
 ⊥ PERPENDICULARIDAD (A ESCUADRA)
 // PARALELISMO
 ○ REDONDEZ (CIRCULARIDAD)
 Ⓢ CILINDRICIDAD
 △ PERFIL DE CUALQUIER SUPERFICIE
 ~ PERFIL DE CUALQUIER LINEA
 ↗ VARIACION
 ⊕ POSICION REAL
 ⊙ CONCENTRICIDAD
 = SIMETRIA
 ASME Y14.5M 1994

A MENOS QUE SE ESPECIFIQUE DE OTRA MANERA, LAS TOLERANCIAS DE LAS DIMS. SON LAS SIGUIENTES:
 PULG ±.1 ±.02 ±.005 ±.0005
 mm ±0.5 ±0.13 ±0.013
 ANG. ±.50 GRADOS
 ELIMINAR REBABAS Y ORILLAS FILOSAS DEL BORDE.
 PULG .003-.015 mm 0.1-0.4
 FILETEAR ESQUINA: PULG .020 mm 0.5
 MAQUINAR SUPERFICIES
 PULG 125 mm 3.2
 DIMS METRICAS MOSTRADAS [PARENTESIS]

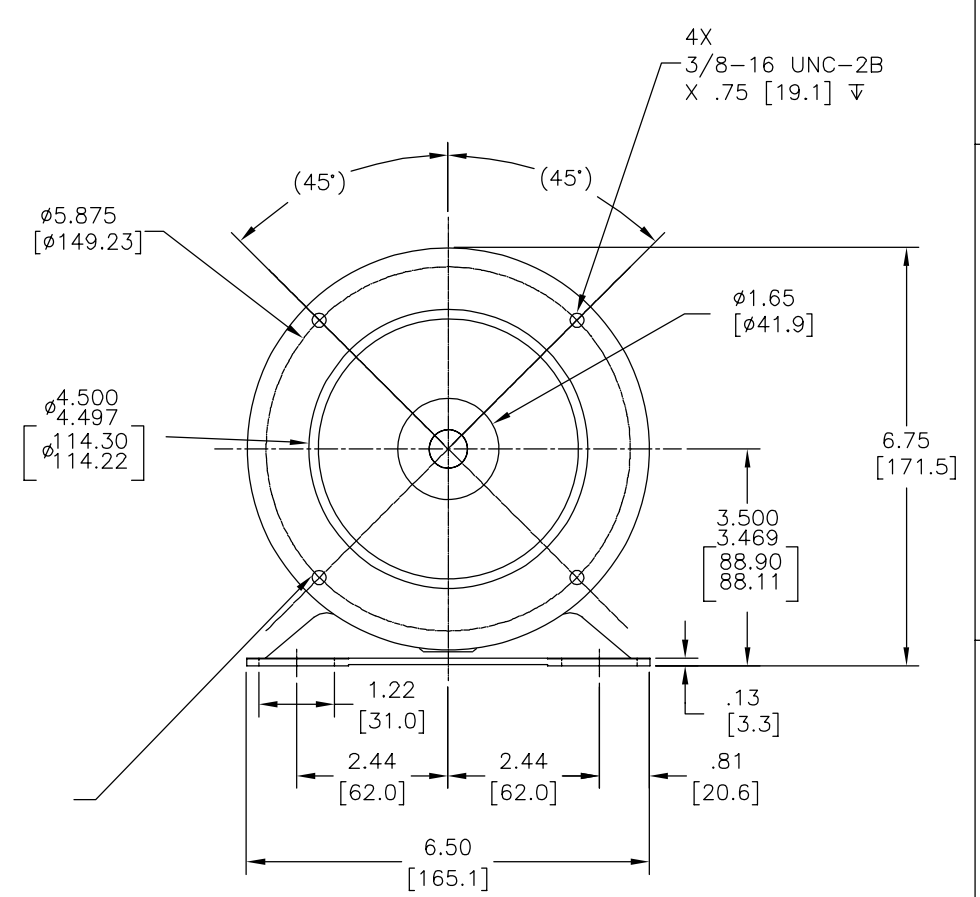
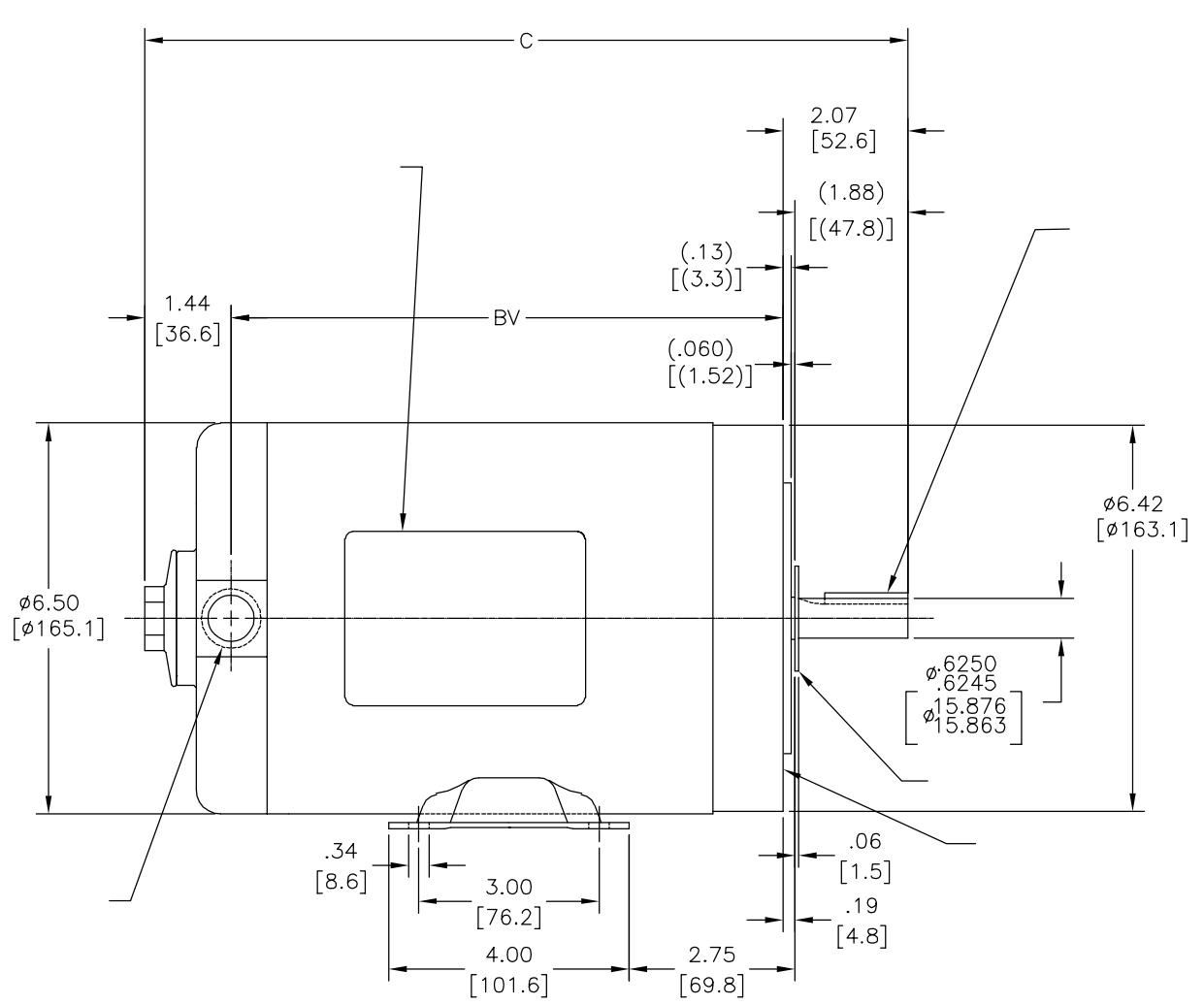
DIBUJADO POR: SAS 04-05-1978
 APROBADO POR:
 TERCER ANGULO DE PROYECCION
 CONFIDENCIAL: ESTE DIBUJO Y SU INFORMACION SON PROPIEDAD DE USO EXCLUSIVO Y CONFIDENCIAL DE REGAL-BELOIT CORPORATION. Y NO DEBERAN SER REVELADOS, DUPLICADOS, DISTRIBUIDOS O USARSE DE OTRA MANERA SIN EL CONSENTIMIENTO ESCRITO DE REGAL-BELOIT CORPORATION. -TODOS LOS DERECHOS RESERVADOS.

REGAL-BELOIT CORPORATION
 DESCRIPCION: OUTLINE
 TAMAÑO: C NUMERO DE DIBUJO: 154666
 ESCALA: NONE HOJA: 1

4 3 2 1

4 3 2 1

版本	ECO	编制	日期	批准	日期
D	0025380	G. ALVIDREZ	04-13-2012	D. BALDERRAMA	04-13-2012



D/S					C	BV
4	15466601	SC	L56C	K	12.19[309.6]	8.68[220.5]
4	15466602	SC	J56C	K	11.06[280.9]	7.55[191.8]
4	15466603	SC	K56C	K	11.44[290.6]	7.93[201.4]
4	15466604	SC	B56C	K	9.81[249.2]	6.30[160.0]
4	15466605	SC	H56C	K	10.06[255.5]	6.55[166.4]

形位公差 □ 平面度 — 直线度 ∠ 倾斜度 ⊥ 垂直度 ∥ 平行度 ○ 圆度 ⊘ 圆柱度 面轮廓度 线轮廓度 ⊙ 圆跳动 ⊕ 位置度 ⊖ 同轴度 ≡ 对称度	除另有注明 尺寸公差如下: 英寸 X XX XXX XXXX 毫米 ±.1 ±.02 ±.005 ±.0005 角度 ±.50 度 清理毛刺和尖棱 英寸 .003-.015 毫米 0.1-0.4 内圆角 英寸 .020 毫米 0.5 表面粗糙度 英制 125 米制 3.2 米制尺寸显示在 []
--	---

绘图: SAS 04-05-1978
批准:
第三角投影
机密: 本图纸及相关信息所有权归REGAL-BELOIT CORPORATION. 未经REGAL-BELOIT CORPORATION书面授权, 不得泄露、复制、传播或作其他用途。一版权所有

REGAL-BELOIT CORPORATION
名称: OUTLINE
图幅: C 图号: 154666
比例: NONE 页号: 1

4 3 2 1