

PRODUCT INFORMATION PACKET



Model No: H949
Catalog No: H949
3.0 HP General Purpose Motor, 3 phase, 3600 RPM, 575 V, 56C Frame, TEFC
General Purpose Motors



Regal and Century are trademarks of Regal Rexnord Corporation or one of its affiliated companies.
©2021 Regal Rexnord Corporation, All Rights Reserved. MC017097E





Nameplate Specifications

| | | | |
|--------------------|-------------------|---------------------|------------------------------------|
| Output HP | 3.0 Hp | Output KW | 2.2 kW |
| Frequency | 60 Hz | Voltage | 575 V |
| Current | 3.1 A | Speed | 3450 rpm |
| Service Factor | 1 | Phase | 3 |
| Duty | Continuous | Insulation Class | B |
| Frame | X56C | Enclosure | Totally Enclosed Fan Cooled |
| Thermal Protection | None | Ambient Temperature | 40 °C |
| UL | Recognized | CSA | Y |
| CE | N | Number of Speeds | 1 |

Technical Specifications

| | | | |
|-----------------------|--|--------------------|------------------------------------|
| Electrical Type | Polyphase, Induction Type, Single Or Dual Voltage | Starting Method | Across The Line |
| Poles | 2 | Rotation | Reversible Counterclockwise |
| Mounting | Rigid Base | Drive End Bearing | Ball |
| Opp Drive End Bearing | Ball | Frame Material | Rolled Steel |
| Shaft Type | Keyed | Overall Length | 13.71 in |
| Frame Length | 7.50 in | Shaft Diameter | 0.625 in |
| Shaft Extension | 2.07 in | | |
| Outline Drawing | 195067-S01 | Connection Drawing | 17050814.PCX |

This is an uncontrolled document once printed or downloaded and is subject to change without notice. Date Created:10/07/2021

| GROUP | TYPE | FRAME | "C" | (BS) |
|-------|------|-------|--------------|------------|
| -01 | SC | J56C | 11.34[288.0] | 1.53[38.9] |
| -02 | SCE | G56C | 12.21[310.1] | 2.40[61.0] |
| -03 | SC | K56C | 11.71[297.4] | 1.90[48.3] |
| -04 | SC | X56C | 13.71[348.2] | 3.90[99.1] |
| -05 | SC | U56C | 13.21[335.5] | 3.40[86.4] |

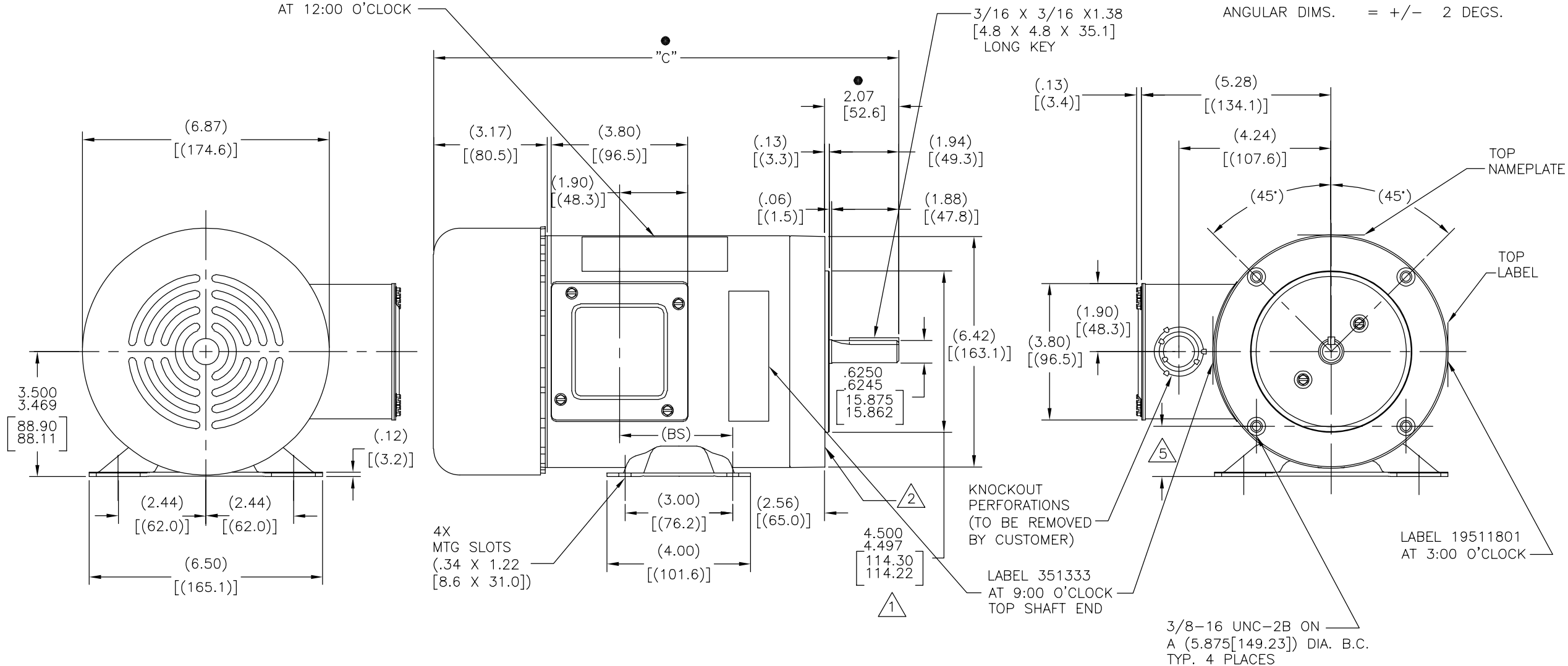
NOTES:

- 1. PILOT DIAMETER IS CONCENTRIC WITH SHAFT CENTERLINE WITHIN .004[.10] T.I.R.
- 2. FACE OF MOUNTING FLANGE IS PERPENDICULAR TO SHAFT CENTERLINE WITHIN .004[.10] T.I.R.
- 3. SHAFT RUNOUT NOT TO EXCEED .002[.05] T.I.R.
- 4. ENDPLAY NOT TO EXCEED .010[.25] MEASURED WITH NO THRUST.
- 5. THE BOTTOM HOLES IN THE MTG. FLANGE ARE PARALLEL FROM THE BOTTOM OF THE FEET WITHIN .030[.76].

ALL DIMENSIONS SHOWN IN PARENTHESIS ARE REFERENCE DIMENSIONS. ALL OTHER DIMENSIONS ARE TOLERANCED PER THE FOLLOWING CHART UNLESS OTHERWISE SPECIFIED.

"C" DIM. = +/- .055[1.40]
 SHAFT EXT. = +/- .034[.86]
 LEAD LENGTHS = +/- 1.00[25.4]
 EXTENDED THRU-BOLTS = +/- .050[1.27]
 ANGULAR DIMS. = +/- 2 DEGS.

NAMEPLATE AT 12:00 O'CLOCK



● = CRITICAL DIMENSION

| | | | | | |
|---|----------------------------|--------------------|---|------------------------|----------------------------|
| DRAWING REVISION K | REVISION BY A.RODRIGUEZ | DATE 01-24-2014 | TOLERANCES UNLESS OTHERWISE SPECIFIED DEC. INCH mm ANGLE .X ±0.1 [±2.5] ±0.5° .XX ±0.02 [±0.51] .XXX ±0.005 [±0.127] .XXXX ±0.0005 [±0.0127] | DRAWN BY: davhol | Regal Beloit America, Inc. |
| ECO ECO-0042615 | APPROVED BY T.REYES | DATE 01-24-2014 | REMOVE BURRS & BREAK SHARP EDGES .003[.015] [0.076[.381]] CORNER FILLETS .02 [1.51] MACHINED SURFACES 125 INCH/mm DIM SHOWN IN [BRACKETS] | DATE: 10-27-1999 | |
| Updated Revision | | | | APPROVED BY: - | MATERIAL - |
| <small>COPYRIGHT REGAL BELOIT AMERICA, INC. ALL RIGHTS RESERVED. PROPRIETARY AND CONFIDENTIAL INFORMATION - THIS DOCUMENT IS THE PROPERTY OF REGAL BELOIT AMERICA, INC. (OWNER) AND CONTAINS OWNER'S PROPRIETARY INFORMATION. ANY PERSON, CORPORATION OR OTHER FIRM RECEIVING IT IS DEEMED, BY RECEIVING IT, TO AGREE THAT IT, AND/OR ANY PART OF IT, SHALL NOT BE DISCLOSED TO ANY PERSON, CORPORATION OR OTHER ENTITY, DUPLICATED, AND/OR USED, EXCEPT AS EXPRESSLY APPROVED IN WRITING IN ADVANCE BY OWNER. THIS DOCUMENT SHALL BE RETURNED TO OWNER UPON REQUEST. IT MAY BE SUBJECT TO CERTAIN RESTRICTIONS UNDER APPLICABLE EXPORT CONTROL LAWS AND REGULATIONS.</small> | | | | DATE: - | SIZE DWG NO C 195067 |
| | | | | THIRD ANGLE PROJECTION | SHEET 1 |