

PRODUCT INFORMATION PACKET



Model No: HSQ1072

Catalog No: HSQ1072

Pool Pump Motor, 3/4 HP, 1 Ph, 60 Hz, 208-230-115 V, 3600 RPM, Y56Y Frame, ODP



Regal and Century are trademarks of Regal Rexnord Corporation or one of its affiliated companies.

©2024 Regal Rexnord Corporation, All Rights Reserved. MC017097E





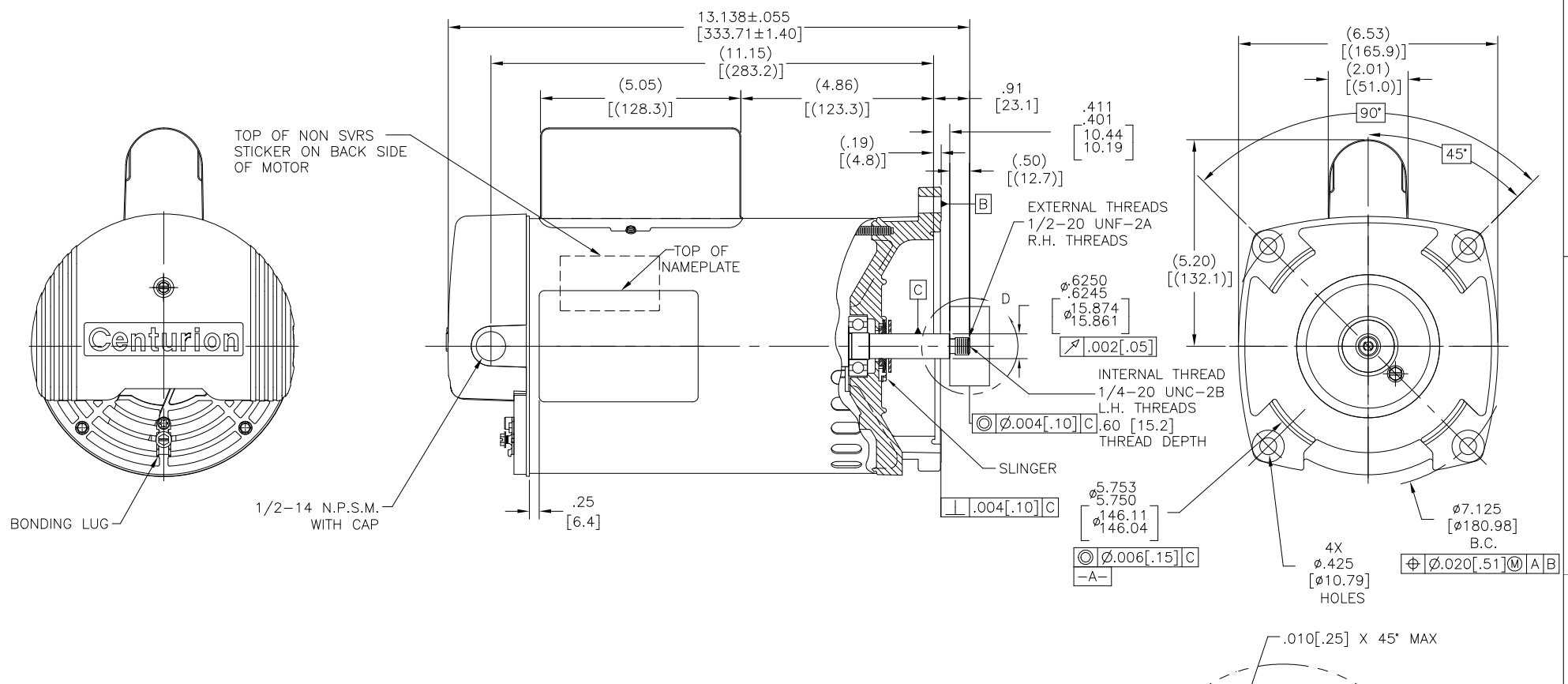
Nameplate Specifications

Phase	1	Output HP	3/4 Hp
Output KW	0.56 kW	Voltage	208-230-115 V
Speed	3450 rpm	Service Factor	1.85
Frame	Y56Y	Enclosure	Open Drip Proof
Thermal Protection	Thermally Protected	Ambient Temperature	60 °C
Frequency	60 Hz	Current	7.0-5.8/11.6 A
Duty	Continuous	Insulation Class	F
UL	Recognized	CSA	Y
Number of Speeds	1		

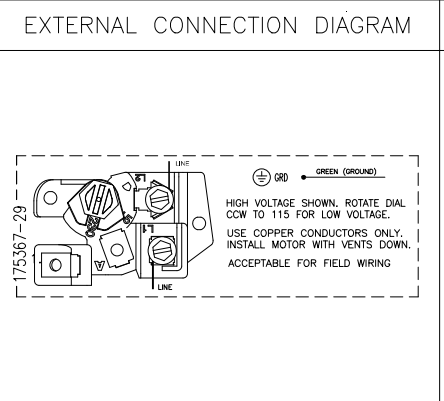
Technical Specifications

Electrical Type	Capacitor Start, Capacitor Run, Single Or Dual Voltage	Poles	2
Rotation	Counterclockwise Pump End	Mounting	Round
Motor Orientation	Horizontal	Drive End Bearing	Ball
Opp Drive End Bearing	Ball	Frame Material	Rolled Steel
Shaft Type	1/2 Threaded	Overall Length	13.14 in
Frame Length	8.75 in	Shaft Diameter	0.625 in
Shaft Extension	0.91 in		
Outline Drawing	HSQ1072-S01	Connection Drawing	17536729.PCX

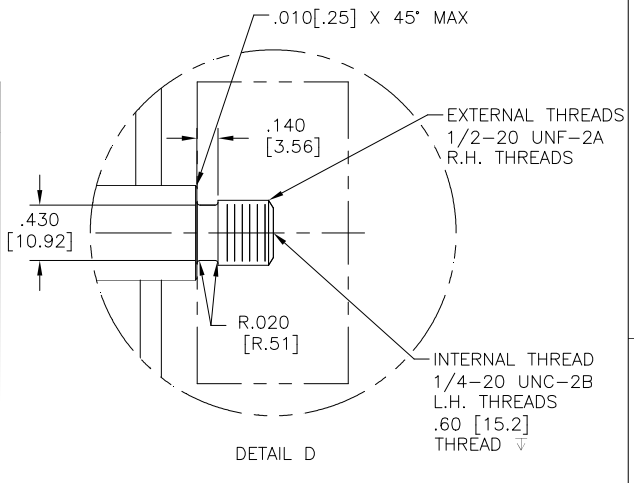
This is an uncontrolled document once printed or downloaded and is subject to change without notice. Date Created:07/23/2024



NAMEPLATE DATA	
MODEL: 196335	
CUST PN: HSQ1072	
HP: .75	SF: 1.85
ROT: CCWPE	
RPM: 3450	
TYPE: CP	CODE: E
FORM:	FRAME: Y 56 Y
VOLTS: 208-230/115	
AMPS:	
MAX AMPS: 7.0-5.8/11.6	
SF AMPS:	
PH: 1	HZ: 60
INS: F	AMB: 60°C
DUTY: CONT	
ENCLOSURE: ODP	
THERMALLY PROTECTED	



- NOTES
1. FOR THREADED SHAFT EXT. ECCENTRICITY OF THREADED PORTION OF SHAFT IS HELD WITHIN .004[.10] TOTAL GAGE READING WITH THE INDICATOR ON O.D. OF GROUND RING GAGE AS SHOWN. THE GAGE BEING STATIONARY WITH RESPECT TO THE ROTOR.
 2. END PLAY NOT TO EXCEED .010[.25] MEASURED WITH NO THRUST
 3. ALL DIMENSIONS SHOWN IN PARENTHESIS ARE REFERENCE DIMENSIONS.
 4. FINISH PAINT TO BE BLACK.
 5. GREEN GROUND SCREW LOCATED UNDER COVER TO BE INSTALLED WITH A .09[2.3] MIN. GAP FOR EASY CONNECTION.
 6. CONNECTED FOR 230V. DUAL VOLTAGE MOTOR. SEE CONNECTION DIAGRAM TO CHANGE VOLTS TO 115V.



PERFORMANCE CURVE		APPROVED SAMPLE	
		0604250A	
UL COMPONENT		CSA	
FILE#	CCN#	FILE#	GUIDE#
E14663	PRG2	LR642	4211-01
CUSTOMER	DISTRIBUTION		

DRAWING REVISION	REVISION BY	DATE	TOLERANCES UNLESS OTHERWISE SPECIFIED	ANGLE	DRAWN BY:	REGAL™ Regal Beloit America, Inc.
K	S JIMENEZ	7-17-2024	DEC. INCH mm	±0.1 [±2.5]	J. HENRY	
ECO	APPROVED BY	DATE	.X ±0.02 [±0.51]	.XXX ±0.005 [±0.127]	DATE:	DESCRIPTION
ECR-0235698	S JIMENEZ	7-17-2024	.XXXX ±0.0005 [±0.0127]	REMOVE BURRS & BREAK SHARP EDGES .003/.015 [0.076/.381]	09-26-2008	MODEL-PFHP-56FR
ECO DESCRIPTION	SEE ECR		CORNER FILLETS .02 [1.51]	MACHINED SURFACES $\sqrt{.125}$ INCH $\sqrt{.32}$ mm	APPROVED BY:	OUTLINE
			mm SHOWN IN [BRACKETS]		DATE:	MATERIAL
					REFERENCE	PROCESS/FINISH
					THIRD ANGLE PROJECTION	SIZE DWG NO
						HSQ1072
						SHEET 1