

PRODUCT INFORMATION PACKET



Model No: HSQ1202
Catalog No: HSQ1202
Pool Pump Motor, 2.0 HP, 1 Ph, 60 Hz, 208-230 V, 3600 RPM, Y56Y Frame, ODP



Regal and Century are trademarks of Regal Rexnord Corporation or one of its affiliated companies.
©2024 Regal Rexnord Corporation, All Rights Reserved. MC017097E





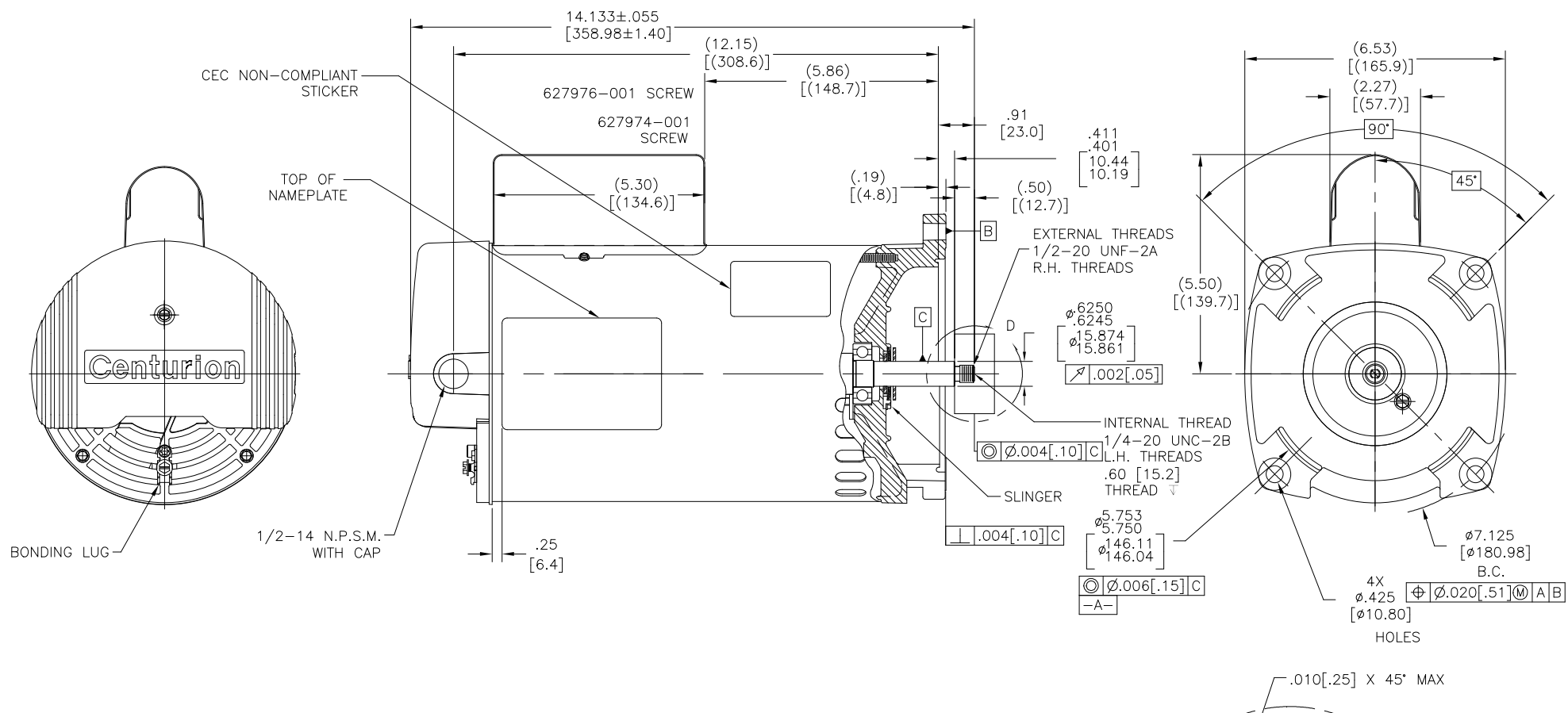
Nameplate Specifications

Phase	1	Output HP	2.0 Hp
Output KW	1.5 kW	Voltage	208-230 V
Speed	3450 rpm	Service Factor	1.35
Frame	Y56Y	Enclosure	Open Drip Proof
Thermal Protection	Thermally Protected	Ambient Temperature	60 °C
Frequency	60 Hz	Current	12.0-11.0 A
Duty	Continuous	Insulation Class	F
UL	Recognized	CSA	Y
Number of Speeds	1		

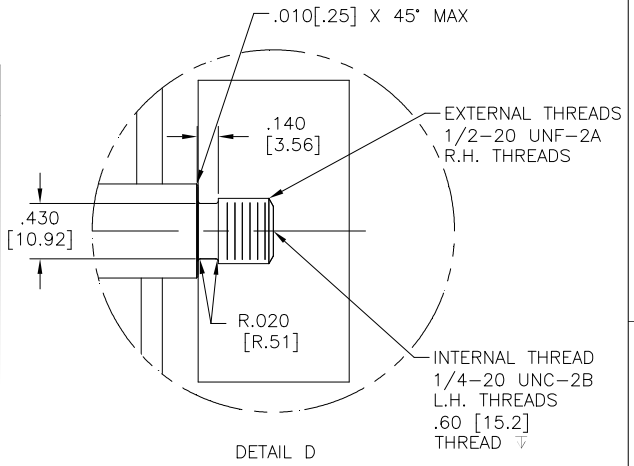
Technical Specifications

Electrical Type	Capacitor Start, Capacitor Run, Single Or Dual Voltage	Poles	2
Rotation	Counterclockwise Pump End	Mounting	Round
Motor Orientation	Horizontal	Drive End Bearing	Ball
Opp Drive End Bearing	Ball	Frame Material	Rolled Steel
Shaft Type	1/2 Threaded	Overall Length	14.13 in
Frame Length	9.75 in	Shaft Diameter	0.625 in
Shaft Extension	0.91 in		
Outline Drawing	HSQ1202-S01	Connection Drawing	17536730.PCX

This is an uncontrolled document once printed or downloaded and is subject to change without notice. Date Created:05/01/2024



NAMEPLATE DATA	EXTERNAL CONNECTION DIAGRAM	NOTES
MODEL: 196338 CUST PN: HSQ1202 HP: 2.0 SF: 1.35 ROT: CCWPE RPM: 3450 TYPE: CP CODE: H FORM: FRAME: Y 56 Y VOLTS: 208-230 AMPS: MAX AMPS: 12.0-11.0 SF AMPS: PH: 1 HZ: 60 INS: F AMB: 60°C DUTY: CONT ENCLOSURE: ODP THERMALLY PROTECTED	<p>USE COPPER CONDUCTORS ONLY. INSTALL MOTOR WITH VENTS DOWN. ACCEPTABLE FOR FIELD WIRING</p>	<ol style="list-style-type: none"> FOR THREADED SHAFT EXT. ECCENTRICITY OF THREADED PORTION OF SHAFT IS HELD WITHIN .004[.10] TOTAL GAGE READING WITH THE INDICATOR ON O.D. OF GROUND RING GAGE AS SHOWN, THE GAGE BEING STATIONARY WITH RESPECT TO THE ROTOR. END PLAY NOT TO EXCEED .010[.25] MEASURED WITH NO THRUST ALL DIMENSIONS SHOWN IN PARENTHESIS ARE REFERENCE DIMENSIONS. FINISH PAINT TO BE BLACK. GREEN GROUND SCREW LOCATED UNDER COVER TO BE INSTALLED WITH A .09[2.3] MIN. GAP FOR EASY CONNECTION.



PERFORMANCE CURVE	APPROVED SAMPLE		
101128101	0701132		
UL COMPONENT	CSA		
FILE#	CCN#	FILE#	GUIDE#
E14663	PRGY2	LR642	4211-01
CUSTOMER	DISTRIBUTION		

DRAWING REVISION: J	REVISION BY: S JIMENEZ	DATE: 4-25-2024	TOLERANCES UNLESS OTHERWISE SPECIFIED	DRAWN BY: J HENRY	Regal Beloit America, Inc.
ECR-023418	APPROVED BY: S JIMENEZ	DATE: 4-25-2024	DEC. INCH mm ANGLE	DATE: 6-26-2008	
SEE ECR			.X ±0.1 [±2.5] ±0.5°	APPROVED BY:	DESCRIPTION: MODEL-PFHP-56FR OUTLINE
COPYRIGHT REGAL BELOIT AMERICA, INC. ALL RIGHTS RESERVED. PROPRIETARY AND CONFIDENTIAL INFORMATION - THIS DOCUMENT IS THE PROPERTY OF REGAL BELOIT AMERICA, INC. (OWNER) AND COMPANY OWNER'S PROPRIETARY INFORMATION. ANY REPRODUCTION OR OTHER FORM RECEIVING IT IS DENIED. BY RECEIVING IT, TO AGREE THAT IT AND/OR ANY PART OF IT, SHALL NOT BE DISCLOSED TO ANY PERSON, CORPORATION OR OTHER ENTITY, DUPLICATED, AND/OR USED, EXCEPT AS EXPRESSLY APPROVED IN WRITING IN ADVANCE BY OWNER. THIS DOCUMENT SHALL BE RETURNED TO OWNER UPON REQUEST. IT MAY BE SUBJECT TO CERTAIN RESTRICTIONS UNDER APPLICABLE EXPORT CONTROL LAWS AND REGULATIONS.			.XX ±0.02 [±0.51]	DATE:	MATERIAL:
			.XXX ±0.005 [±0.127]	REFERENCE:	PROCESS/FINISH:
			REMOVE BURRS & BREAK SHARP EDGES .003/.015 [0.076/.381] X 45° CORNER FILLETS R.02 [0.51] MACHINED SURFACES .125/ mm 3/2	THIRD ANGLE PROJECTION:	SIZE DWG NO:
			mm SHOWN IN [BRACKETS]	SIZE DWG NO:	HSQ1202
				SHEET:	1

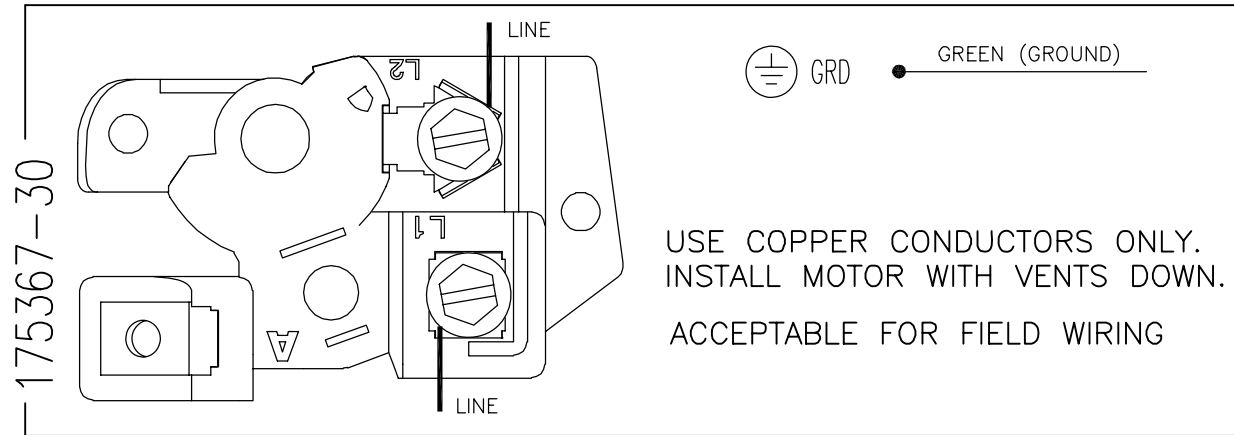
4

3

2

1

REV	ECO	REV BY	DATE	APPD	DATE
B	0021650	Cherry.Zhang	07-15-2011	Hong.Zhu	07-15-2011



USE COPPER CONDUCTORS ONLY.
INSTALL MOTOR WITH VENTS DOWN.
ACCEPTABLE FOR FIELD WIRING

175367-30

(230 VOLTAGE SINGLE SPEED)

NOTES:

- 1) DOTTED BOX REPRESENTS TOTAL PRINTED AREA ALLOWED FOR CONNECTION DIAGRAM TO FIT IN (2.13[54.1] X .75[19.0]). SEE NAMEPLATE DRAWING 170500 OR 170501 FOR LOCATION.
- 2) CHARACTERS ARE TO BE A MINIMUM OF .03[.8] TO .06[1.5] MAXIMUM IN HEIGHT
- 3) DETAILS ARE NOT TO BE COPIED FROM DRAWING, BUT ARE TO BE REPRODUCED FROM ORIGINAL ARTWORK FURNISHED.
- 4) FUTURE DETAILS ARE TO BE PLACED ON D0000112

GEOMETRIC CHARACTERISTICS & SYMBOLS

▭	FLATNESS
—	STRAIGHTNESS
∠	ANGULARITY
⊥	PERPENDICULARITY (SQUARENESS)
//	PARALLELISM
○	ROUNDNESS (CIRCULARITY)
⊘	CYLINDRICITY
△	PROFILE OF ANY SURFACE
∩	PROFILE OF ANY LINE
↗	RUNOUT
⊕	TRUE POSITION
◎	CONCENTRICITY
≡	SYMMETRY

UNLESS OTHERWISE SPECIFIED DIM. TOLERANCES ARE AS FOLLOWS:

INCH	±.1	±.02	±.005	±.0005
mm	±0.5	±0.13	±0.013	
ANG.	±.50 DEG			
REMOVE BURRS & BREAK SHARP EDGES:				
INCH	.003-.015			
mm	0.1-0.4			
CORNER FILLETS TO:				
INCH	.020			
mm	0.5			
MACHINE SURFACES:				
INCH	125			
mm	3.2			
METRIC DIMS. SHOWN IN [BRACKETS]				

DR BY:	Cherry.Zhang	07-15-2011
APPD:	Hong.Zhu	07-15-2011
THIRD ANGLE PROJECTION		EDS DATE 02-22-2008 FORMAT REV F
CONFIDENTIAL: THIS DRAWING AND ITS INFORMATION ARE THE EXCLUSIVE AND CONFIDENTIAL PROPERTY OF A.O. SMITH CORP. AND ARE NOT TO BE DISCLOSED, DUPLICATED, DISTRIBUTED OR OTHERWISE USED WITHOUT THE WRITTEN CONSENT OF A.O. SMITH CORP. -ALL RIGHTS RESERVED. ASME Y14.5M 1994		

	ELECTRICAL PRODUCTS COMPANY	
	A DIVISION OF A. O. SMITH CORPORATION	
DESCRIPTION	CONN DIAGRAM-NAMEPLATE	
SIZE	C	DWG NO 17536730
SCALE	NONE	SHEET 1

4

3

2

1

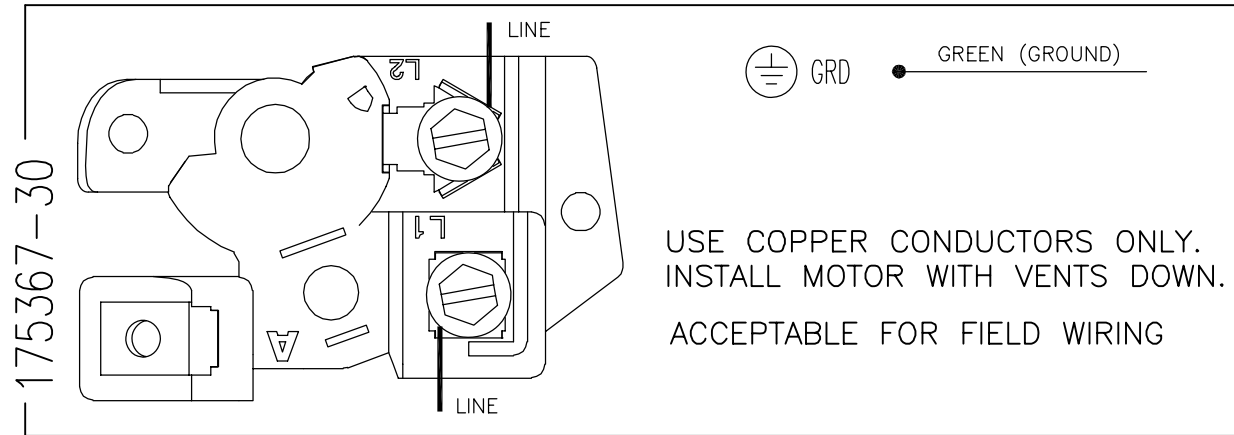
4

3

2

1

REVISION:	ECO	REVISADO POR:	FECHA:	APROBADO POR:	FECHA:
B	0021650	Cherry.Zhang	07-15-2011	Hong.Zhu	07-15-2011



USE COPPER CONDUCTORS ONLY.
INSTALL MOTOR WITH VENTS DOWN.
ACCEPTABLE FOR FIELD WIRING

(230 VOLTAGE SINGLE SPEED)

CARACTERISTICAS DE GEOMETRIA Y SIMBOLOS ▽ PLANICIDAD — RECTITUD < ANGULARIDAD ⊥ PERPENDICULARIDAD (A ESCUADRA) // PARALELISMO ○ REDONDEZ (CIRCULARIDAD) ∅ CILINDRICIDAD △ PERFIL DE CUALQUIER SUPERFICIE ∩ PERFIL DE CUALQUIER LINEA / VARIACION ⊕ POSICION REAL ⊙ CONCENTRICIDAD = SIMETRIA	A MENOS QUE SE ESPECIFIQUE DE OTRA MANERA, LAS TOLERANCIAS DE LAS DIMS; SON LAS SIGUIENTES: x xx xxx xxxx PULG ±.1 ±.02 ±.005 ±.0005 mm ±0.5 ±0.13 ±0.013 ANG. ± 50 GRADOS ELIMINAR REBABAS Y ORILLAS FILOSAS DEL BORDE. PULG .003-.015 mm 0.1-0.4 FILETEAR ESQUINA: PULG .020 mm 0.5 MAQUINAR SUPERFICIES PULG 125 mm .32 DIMS METRICAS MOSTRADAS [PARENTESIS]	DIBUJADO POR: Cherry.Zhang	07-15-2011	ELECTRICAL PRODUCTS COMPANY A DIVISION OF A. O. SMITH CORPORATION DESCRIPCION: CONN DIAGRAM-NAMEPLATE	
		APROBADO POR: Hong.Zhu	07-15-2011		TAMAÑO: C
		TERCER ANGULO DE PROYECCION	FECHA EDS: 02-22-2008 REV. FORMATO: F	ESCALA: NONE	HOJA: 1
		CONFIDENCIAL: ESTE DIBUJO Y SU INFORMACION SON PROPIEDAD DE USO EXCLUSIVO Y CONFIDENCIAL DE A.O.SMITH CORP. Y NO DEBERAN SER REVELADOS, DUPLICADOS, DISTRIBUIDOS O USARSE DE OTRA MANERA SIN EL CONSENTIMIENTO ESCRITO DE A.O. SMITH CORP. -TODOS LOS DERECHOS RESERVADOS. ASME Y14.5M 1994			

4

3

2

1

4

3

2

1

版本	ECO	编制	日期	批准	日期
B	0021650	Cherry.Zhang	07-15-2011	Hong.Zhu	07-15-2011

D

D

C

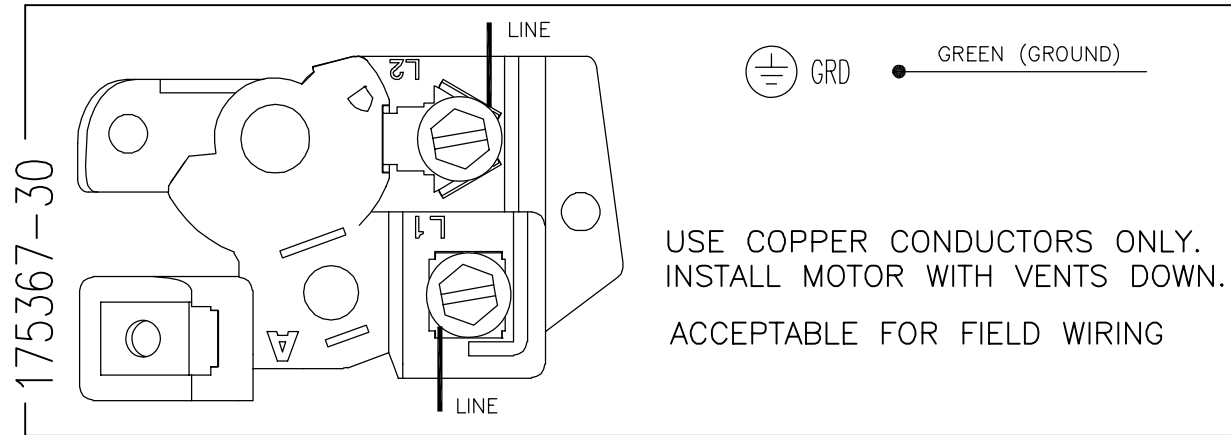
C

B

B

A

A



USE COPPER CONDUCTORS ONLY.
INSTALL MOTOR WITH VENTS DOWN.
ACCEPTABLE FOR FIELD WIRING

(230 VOLTAGE SINGLE SPEED)

形位公差	除另有注明 尺寸公差如下:
□ 平面度	英寸 X ±.1 XX ±.02 XXX ±.005 XXXX ±.0005
— 直线度	毫米 ±0.5 ±0.13 ±0.013
∠ 倾斜度	角度 ±.50 度
⊥ 垂直度	清理毛刺和尖棱
∥ 平行度	英寸 .003-.015 毫米 0.1-0.4
○ 圆度	内圆角
⊘ 圆柱度	英寸 .020 毫米 0.5
△ 面轮廓度	表面粗糙度
∩ 线轮廓度	英制 125 米制 3.2
↗ 圆跳动	米制尺寸显示在 []
⊕ 位置度	
◎ 同轴度	
≡ 对称度	

绘图:	Cherry.Zhang	07-15-2011
批准:	Hong.Zhu	07-15-2011
第三角投影		图纸格式发布日期 02-22-2008 图纸格式版本 F
机密: 本图纸及相关信息所有权归A. O. SMITH公司所有。 未经A. O. SMITH公司书面授权, 不得泄露、复制、传播或作 其他用途。—版权所有		
ASME Y14.5M 1994		

ACSmith Innovation has a name.		ELECTRICAL PRODUCTS COMPANY A DIVISION OF A. O. SMITH CORPORATION	
名称 CONN DIAGRAM-NAMEPLATE			
图幅	C	图号	17536730
比例	NONE	页号	1

名称	CONN DIAGRAM-NAMEPLATE		
图幅	C	图号	17536730
比例	NONE	页号	1

4

3

2

1