

PRODUCT INFORMATION PACKET

FASCO®

Model No: K109
Catalog No: K109
1/75 HP C-Frame / Skeleton Motor, 1100 RPM, 115 Volts, , OAO



Regal and Fasco are trademarks of Regal Rexnord Corporation or one of its affiliated companies.
©2022 Regal Rexnord Corporation, All Rights Reserved. MC017097E

RegalRexnord



Nameplate Specifications

Output HP	1/75 Hp	Output KW	0.01 kW
Frequency	60 Hz	Voltage	115 V
Current	.77 A	Speed	3000 rpm
Service Factor	1	Phase	1
Duty	Air Over	Insulation Class	B
Frame	C-FRAME	Enclosure	Open Air Over
Thermal Protection	Thermally Protected	Ambient Temperature	40 °C
UL	Recognized	CSA	N
CE	N	Number of Speeds	1

Technical Specifications

Electrical Type	Shaded Pole	Starting Method	Across The Line
Poles	2	Rotation	Counterclockwise Shaft End
Mounting	Extended Studs	Drive End Bearing	Sleeve
Opp Drive End Bearing	Sleeve	Frame Material	Na
Shaft Type	Flat	Overall Length	4.10 in
Shaft Diameter	0.218 in	Shaft Extension	2.37 in
Connection Drawing	NA	Outline Drawing	71581186

This is an uncontrolled document once printed or downloaded and is subject to change without notice. Date Created:11/29/2022

4

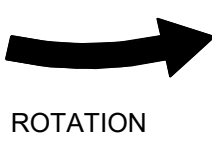
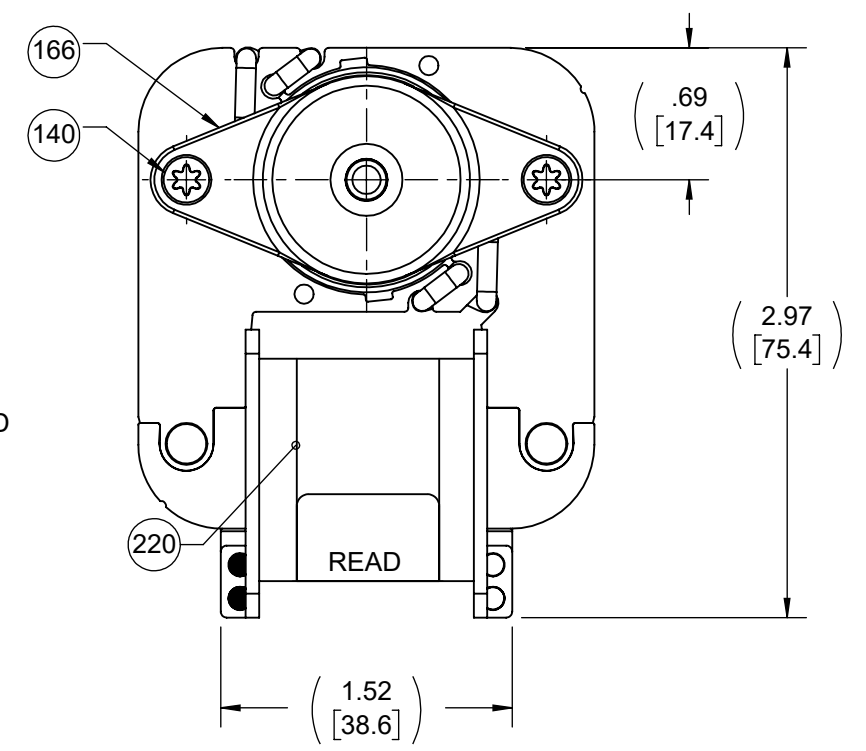
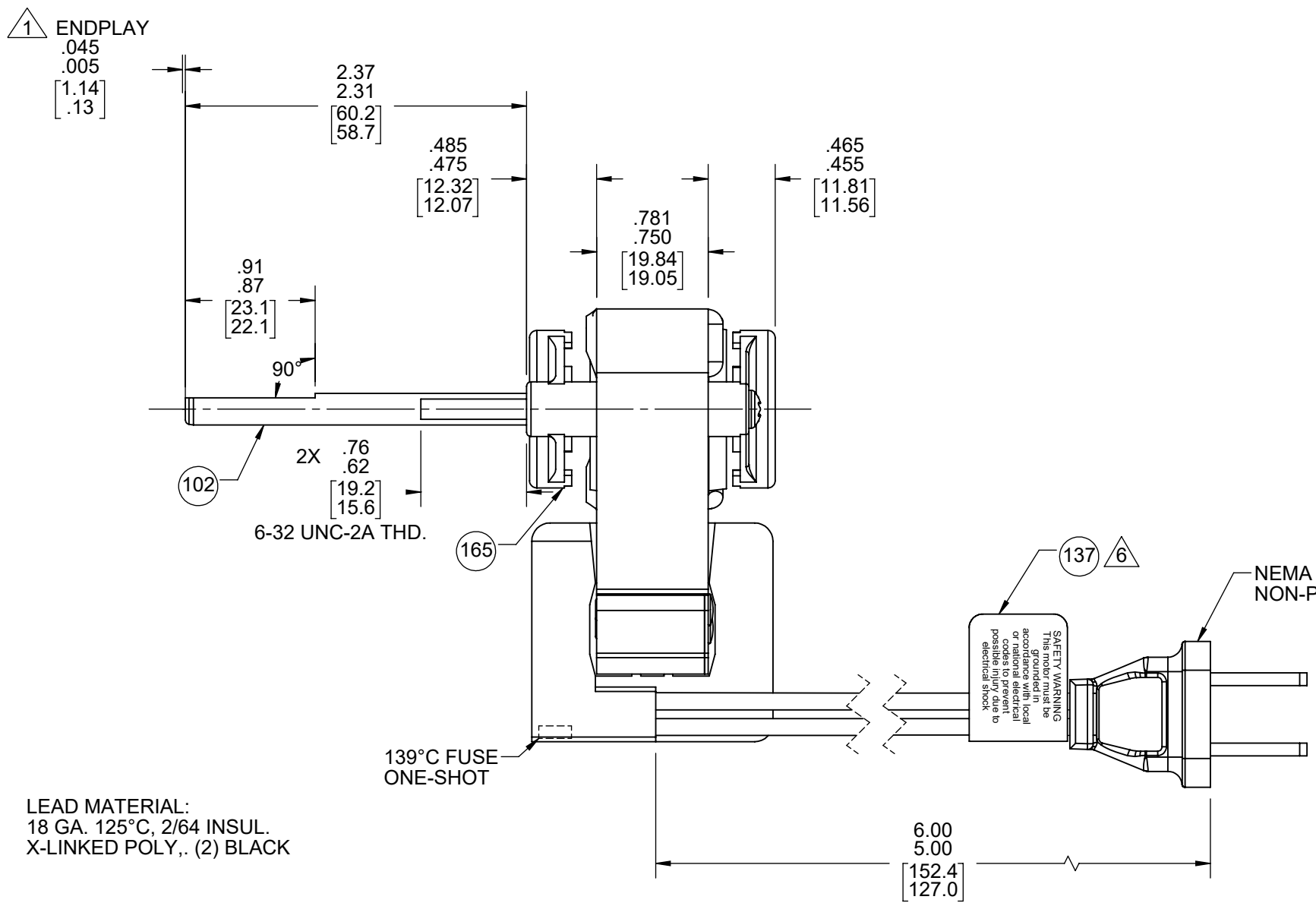
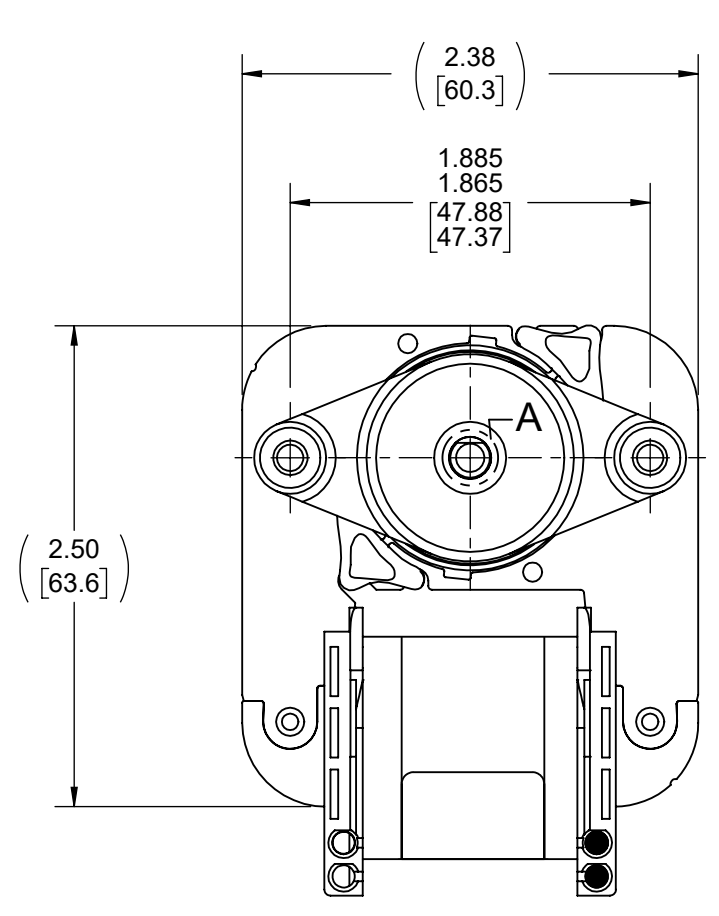
3

2

1

FRONT END

BACK END



SHAFT DETAIL A

LEAD MATERIAL:
18 GA. 125°C, 2/64 INSUL.
X-LINKED POLY., (2) BLACK

- NOTES:
- SHAFT EXTENSION MEASURED WITH END PLAY PUSHED IN.
 - SHIM BOTH ENDS WITH (1) PC 246 AND (1) PC 247. ADD (1) MIN. TO (4) MAX. OF PC 247 TO FRONT END ONLY AS REQUIRED TO MAINTAIN SPECIFIED ENDPLAY.
 - MOTOR MUST START AT 70 VOLTS.
 - HIPOT PER 88834420.
 - ROTOR CORE, STATOR CORE AND STATOR BAR ASSEMBLIES ARE COATED WITH TWIN EMULSION.
 - FOLD PC 137 IN HALF AROUND CORD.
 - PACK 6 PER CONTAINER, 12 CONTAINERS PER LAYER, 9 LAYERS PER PALLET, 648 MAX. AMOUNT PER PALLET. PACKING ASSEMBLY 87854178, PER 88834200 AND 88834408.
 - CARTON LABELS MUST ALL FACE ONE DIRECTION TOWARD THE OPEN END OF THE PALLET. SEE 88834408.
 - NO PACKAGING TAPE OVER CARTON LABEL.

61305568

SAFETY WARNING
This motor must be grounded in accordance with local or national electrical codes to prevent possible injury due to electrical shock

AVERTISSEMENT DE SÉCURITÉ
Ce moteur doit être fondée sur conformément à la réglementation locale ou nationale électrique codes pour prévenir d'éventuelles blessures en raison de choc électrique

61299553

99581186

FASCO
Model: K109
71581186

115 V 60 Hz
Ref. 1775 HP 1.2 LRA
.98 FLA @3000 RPM
Max Amb 40°C AO
E64080 E48562
Class B
T.P.
Assembled In Mexico

CUSTOMER:	FASCO DIST.	APPLICATION:									
CUSTOMER PN:	K109	MOTOR WEIGHT:	1.5 LBS								
		ENVIRONMENT:	DRY								
HORIZONTAL	UP	MOTOR TYPE				REFERENCE SAMPLE					
		MOTOR, C-FRAME									
		B	LA	FR	A	S	C	E	B	A	
		00	58	52	X	12	BL	5	A	0	
TYPICAL PERFORMANCE AT 115 VOLTS 60 HZ											
MOTOR SPEED	IDLE			LOADED			LOCKED			BREAK	
	RPM	AMP	WATT	IN OZ	RPM	AMP	WATT	IN OZ	AMP	WATT	IN OZ
	3425	.90	39	4.3	3000	.98	49	3.2	1.2	60	6.2

DRAWING REVISION AC	REVISION BY BAA	REV DATE/© DATE 03/04/2021	TOLERANCES (EXCEPT AS NOTED): DEC. INCH mm ANGLE	DRAWN BY JMG	REGAL Regal Beloit America, Inc.
ECO ECR-0207618	APPROVED BY JMG	DATE 03/04/2021	.X ±0.1 [±3] .XX ±0.01 [±0.3] .XXX ±0.005 [±0.13] .XXXX ±0.0005 [±0.013]	DATE 02/02/2018	
ECO DESCRIPTION UPDATED PRINT PER MARK-UPS			REMOVE BURRS & BREAK SHARP EDGES: .003/.015 [.08/.38] X 45° CORNER FILLETS: R.02 [.5] MACHINED SURFACES: .125 / mm 3.2 INCH / mm mm DIMENSIONS IN [BRACKETS] ARE FOR REFERENCE ONLY	APPROVED BY PLA	DESCRIPTION OUTLINE MOTOR ASSY
COPYRIGHT (PER REVISION DATE) REGAL BELOIT AMERICA, INC. ALL RIGHTS RESERVED. PROPRIETARY AND CONFIDENTIAL INFORMATION - THIS DOCUMENT IS THE PROPERTY OF REGAL BELOIT AMERICA, INC. (OWNER) AND CONTAINS OWNER'S PROPRIETARY INFORMATION. ANY PERSON, CORPORATION OR OTHER FIRM RECEIVING IT IS DEEMED, BY RECEIVING IT, TO AGREE THAT IT, AND/OR ANY PART OF IT, SHALL NOT BE DISCLOSED TO ANY PERSON, CORPORATION OR OTHER ENTITY, DUPLICATED, AND/OR USED, EXCEPT AS EXPRESSLY APPROVED IN WRITING IN ADVANCE BY OWNER. THIS DOCUMENT SHALL BE RETURNED TO OWNER UPON REQUEST. IT MAY BE SUBJECT TO CERTAIN RESTRICTIONS UNDER APPLICABLE EXPORT CONTROL LAWS AND REGULATIONS.			DATE 02/02/2018	REFERENCE	MATERIAL
			THIRD ANGLE PROJECTION	SIZE C	DRAWING NUMBER 71581186
					PROCESS/FINISH
					SHEET 1 OF 1