

PRODUCT INFORMATION PACKET

FASCO®

Model No: K110
Catalog No: K110
1/75 HP C-Frame / Skeleton Motor, 3000 RPM, 115 Volts, , OAO



Regal and Fasco are trademarks of Regal Rexnord Corporation or one of its affiliated companies.
©2022 Regal Rexnord Corporation, All Rights Reserved. MC017097E

RegalRexnord



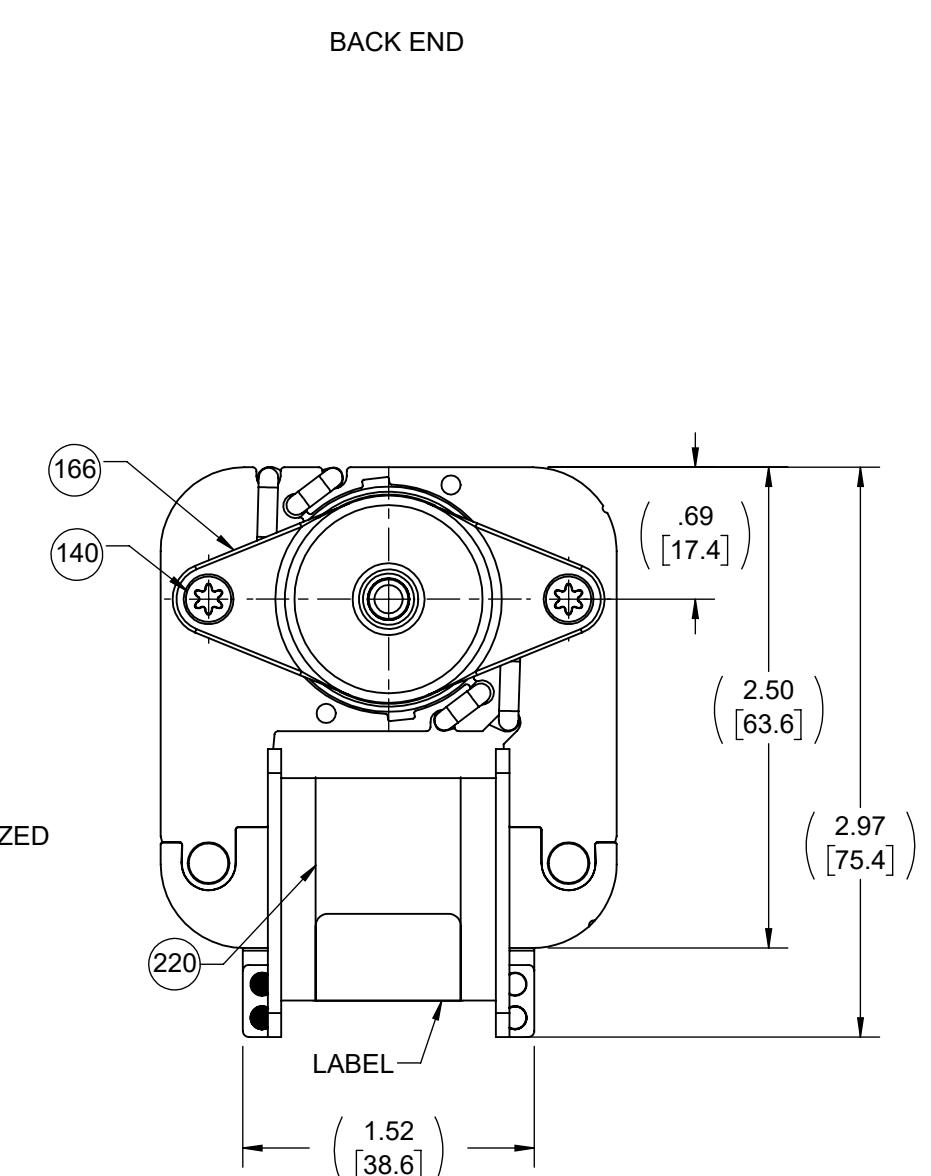
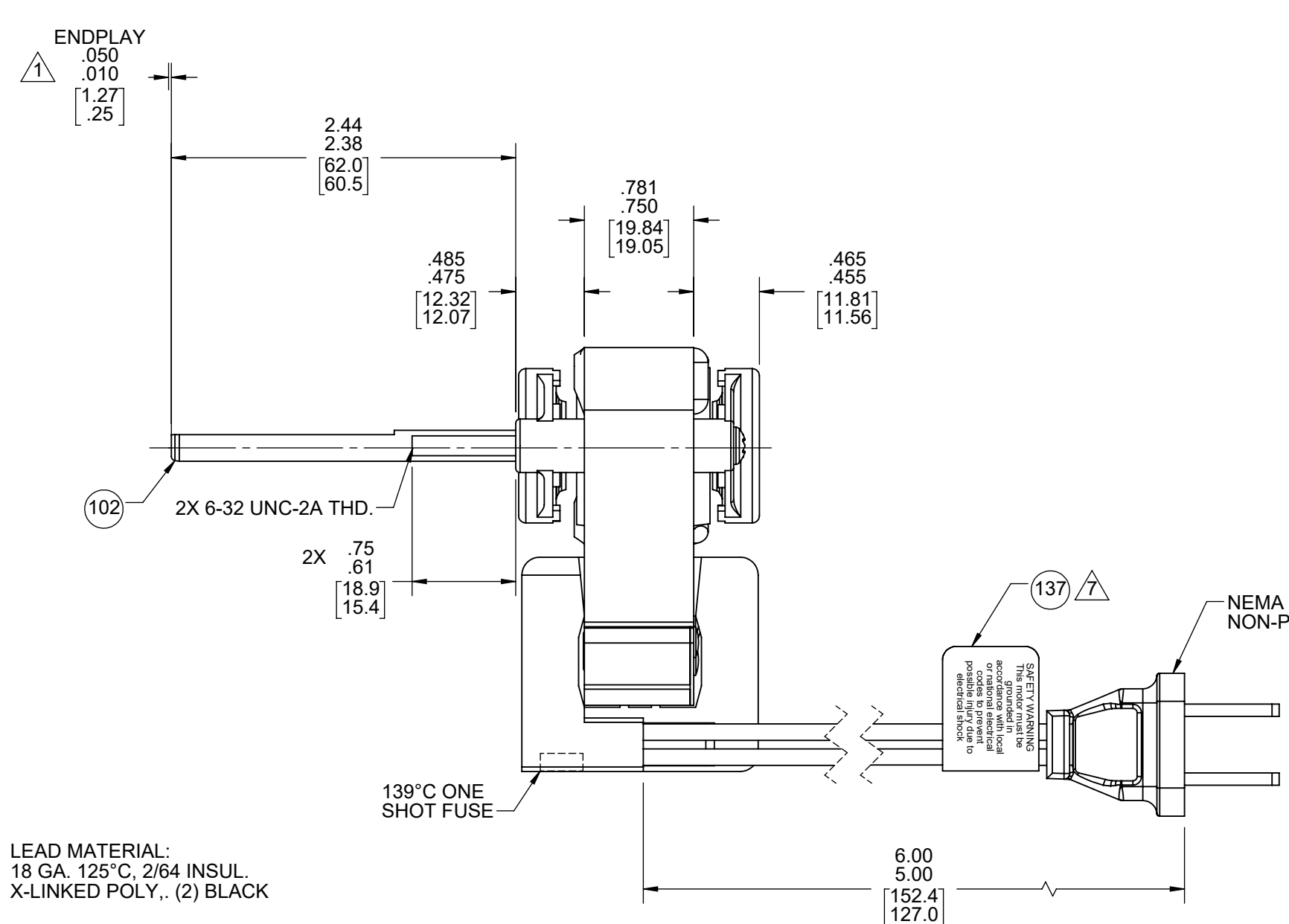
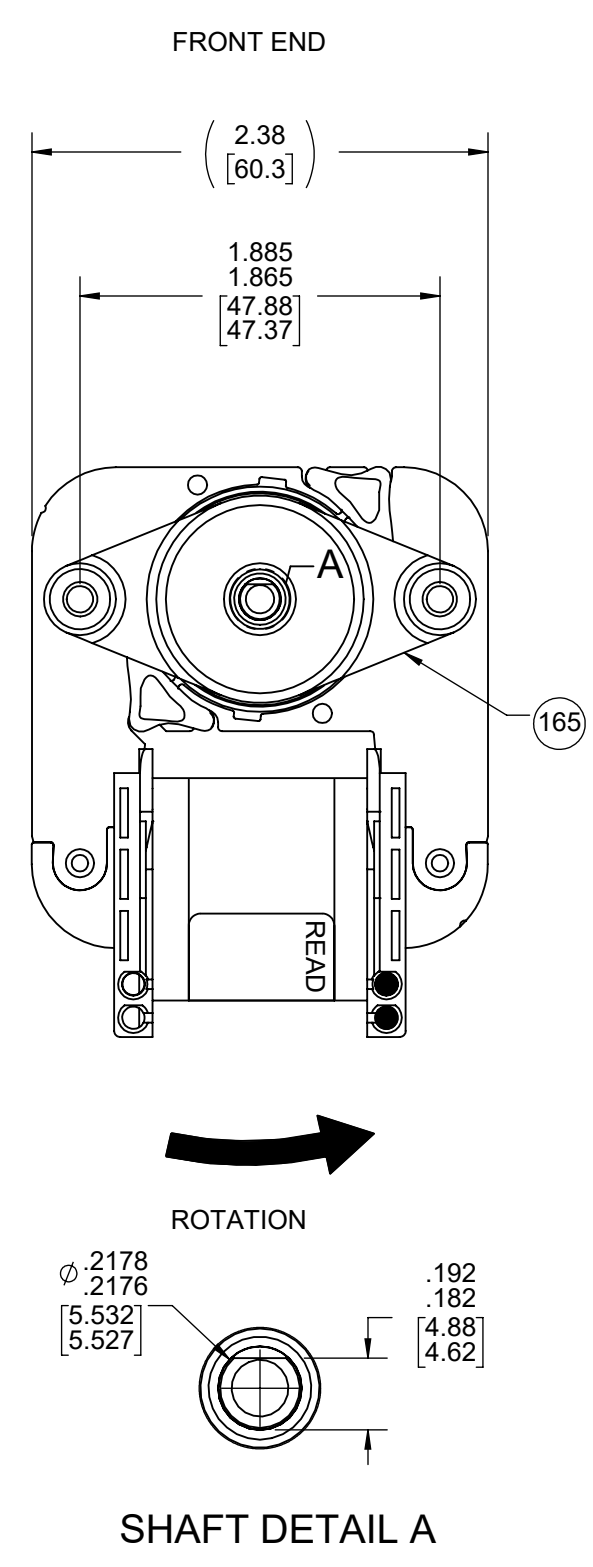
Nameplate Specifications

Output HP	1/75 Hp	Output KW	0.01 kW
Frequency	60 Hz	Voltage	115 V
Current	0.77 A	Speed	3000 rpm
Service Factor	1	Phase	1
Duty	Air Over	Insulation Class	B
Frame	C-FRAME	Enclosure	Open Enclosed
Thermal Protection	Thermally Protected	Ambient Temperature	40 °C
UL	Recognized	CSA	N
CE	N	Number of Speeds	1

Technical Specifications

Electrical Type	Shaded Pole	Starting Method	Across The Line
Poles	2	Rotation	Counterclockwise Shaft End
Mounting	Extended Studs	Drive End Bearing	Sleeve
Opp Drive End Bearing	Sleeve	Frame Material	Na
Shaft Type	Flat	Overall Length	4.22 in
Shaft Diameter	0.218 in	Shaft Extension	2.44 in
Outline Drawing	71581190		

This is an uncontrolled document once printed or downloaded and is subject to change without notice. Date Created:11/29/2022



LEAD MATERIAL:
18 GA. 125°C, 2/64 INSUL.
X-LINKED POLY., (2) BLACK

- NOTES:
- SHAFT EXTENSION MEASURED WITH END PLAY PUSHED IN.
 - SHIM BOTH ENDS WITH (1) PC 246 AND (1) PC 247. ADD (1) MINIMUM TO (4) MAXIMUM OF PC 247 ON FRONT END AS REQUIRED TO MAINTAIN SPECIFIED ENDPLAY. NOTE PC 247 MUST BE AGAINST BEARING.
 - APPLY (1) DROP OF LUBRICANT TO AID START UP.
 - MOTOR MUST START AT 70 VOLTS.
 - HIPOT PER 88834420.
 - ROTOR CORE, STATOR CORE AND STATOR BAR ASSEMBLIES ARE COATED WITH TWIN EMULSION.
 - FOLD PC 137 IN HALF AROUND CORD.
 - PACK 6 PER CONTAINER, 12 CONTAINERS PER LAYER, 9 LAYERS PER PALLET, 648 MAX. AMOUNT PER PALLET. PACKING ASSEMBLY 87854178, PER 88834200 AND 88834408.
 - CARTON LABELS MUST ALL FACE ONE DIRECTION TOWARD THE OPEN END OF THE PALLET. SEE 88834408.
 - NO PACKAGING TAPE OVER CARTON LABEL.

61305568

SAFETY WARNING
This motor must be grounded in accordance with local or national electrical codes to prevent possible injury due to electrical shock

AVERTISSEMENT DE SÉCURITÉ
Ce moteur doit être fondée sur conformément à la réglementation locale ou national électrique codes pour prévenir d'éventuelles blessures en raison de choc électrique

99581190 61299553

FASCO™ Model: K110
71581190

Assembled in Mexico

E64080 E48562
115 V 60 Hz .95 LRA .77 FLA
Max Amb: 40°C Ref. 1/75 HP

T.P. B 3000 RPM AO

CUSTOMER:	FASCO DIST.	APPLICATION:									
CUSTOMER PN:	K110	MOTOR WEIGHT:	1.5 LBS								
		ENVIRONMENT:	DRY								
MOTOR TYPE		REFERENCE SAMPLE									
MOTOR, C-FRAME											
B	LA	FR	A								
00	58	52	X								
TYPICAL PERFORMANCE AT 115 VOLTS 60 HZ											
MOTOR SPEED	IDLE		LOADED		LOCKED		BREAK				
	RPM	AMP	WATT	IN OZ	RPM	AMP	WATT	IN OZ			
	3455	.70	31	4.74	3000	.77	41	3.24	.95	50	6.25

DRAWING REVISION	REVISION BY	REV DATE/© DATE	TOLERANCES (EXCEPT AS NOTED):	DRAWN BY		Regal Beloit America, Inc.
ED	KKM	10/6/2022	DEC. INCH mm ANGLE	RPT		
REQUEST NUMBER	APPROVED BY	DATE	.X ±0.1 [±3]	DATE	DESCRIPTION	
ECR-0221329	PLA	10/6/2022	.XX ±0.01 [±0.3]	02/24/2015	OUTLINE	
REQUEST NUMBER DESCRIPTION			.XXX ±0.005 [±0.13]	APPROVED BY	MOTOR ASSY	
CORRECTED THE LOADED WATTS TO 41			.XXXX ±0.0005 [±0.013]	MLS	MATERIAL	
COPYRIGHT (PER REVISION DATE) REGAL BELOIT AMERICA, INC. ALL RIGHTS RESERVED. PROPRIETARY AND CONFIDENTIAL INFORMATION - THIS DOCUMENT IS THE PROPERTY OF REGAL BELOIT AMERICA, INC. (OWNER) AND CONTAINS OWNER'S PROPRIETARY INFORMATION. ANY PERSON, CORPORATION OR OTHER FIRM RECEIVING IT IS DEEMED, BY RECEIVING IT, TO AGREE THAT IT, AND/OR ANY PART OF IT, SHALL NOT BE DISCLOSED TO ANY PERSON, CORPORATION OR OTHER ENTITY, DUPLICATED, AND/OR USED, EXCEPT AS EXPRESSLY APPROVED IN WRITING IN ADVANCE BY OWNER. THIS DOCUMENT SHALL BE RETURNED TO OWNER UPON REQUEST. IT MAY BE SUBJECT TO CERTAIN RESTRICTIONS UNDER APPLICABLE EXPORT CONTROL LAWS AND REGULATIONS.			REMOVE BURRS & BREAK SHARP EDGES: .003/.015 [.08/.38] X 45°	DATE	PROCESS/FINISH	
			CORNER FILLETS: R.02 [5]	02/24/2015	DRAWING NUMBER	
			MACHINED SURFACES: .125/ mm 3.2 INCH/mm	REFERENCE	71581190	
			mm DIMENSIONS IN [BRACKETS] ARE FOR REFERENCE ONLY	THIRD ANGLE PROJECTION	SIZE	SHEET
				C	1	1 OF 1