

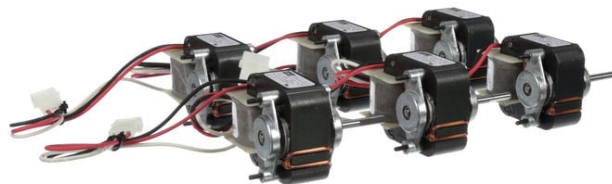
PRODUCT INFORMATION PACKET

FASCO®

Model No: K112

Catalog No: K112

1/50 HP C-Frame / Skeleton Motor, 3000 RPM, 2 Speed, 120 Volts, , OAO



Regal and Fasco are trademarks of Regal Rexnord Corporation or one of its affiliated companies.
©2022 Regal Rexnord Corporation, All Rights Reserved. MC017097E

RegalRexnord



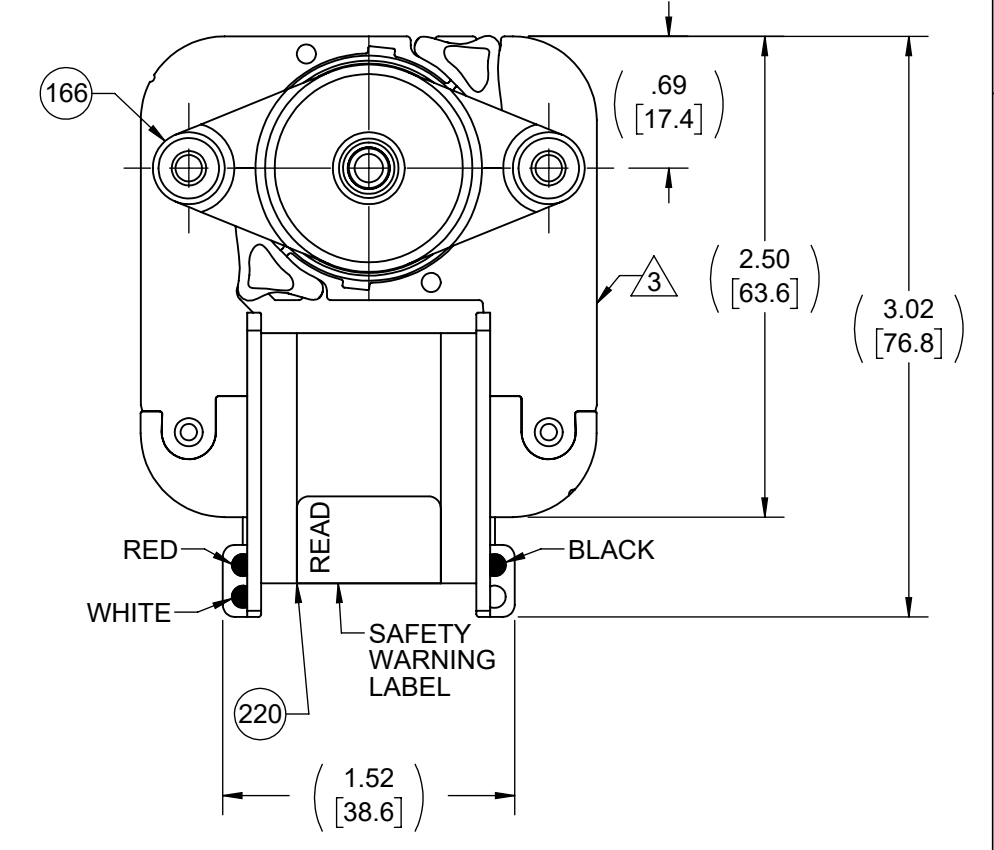
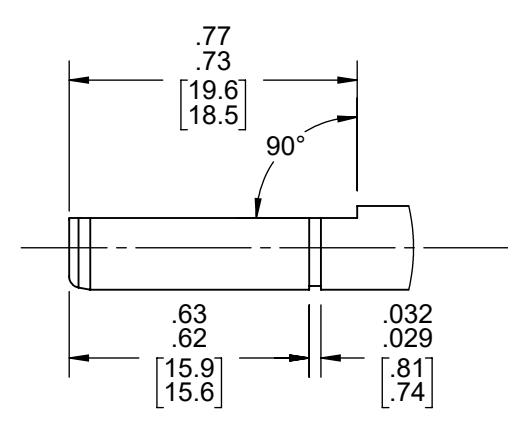
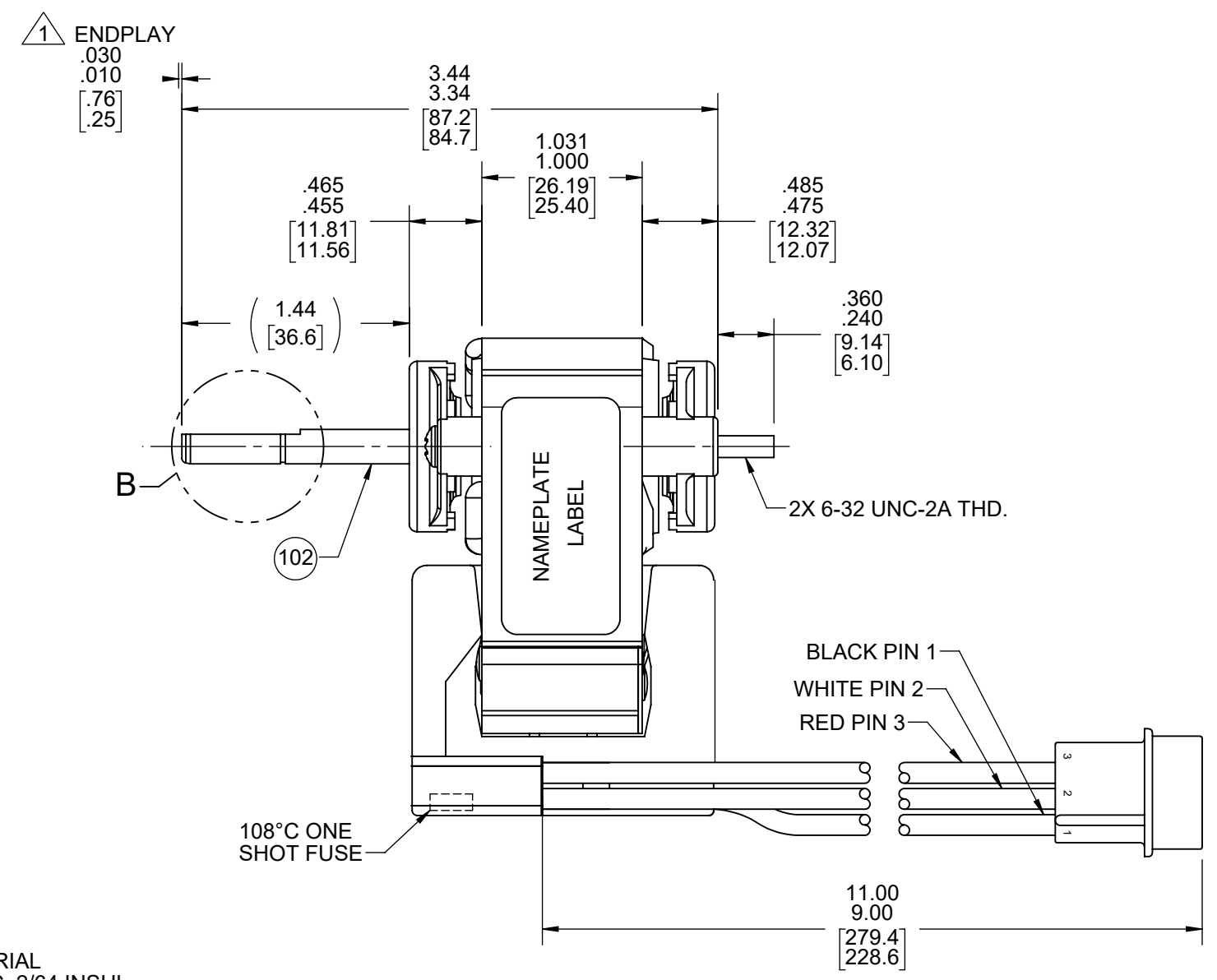
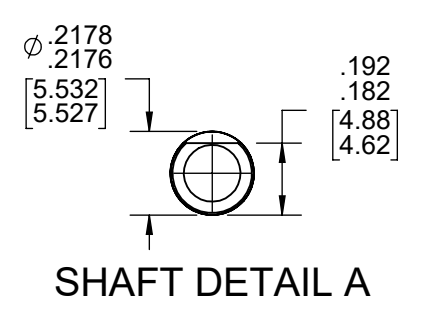
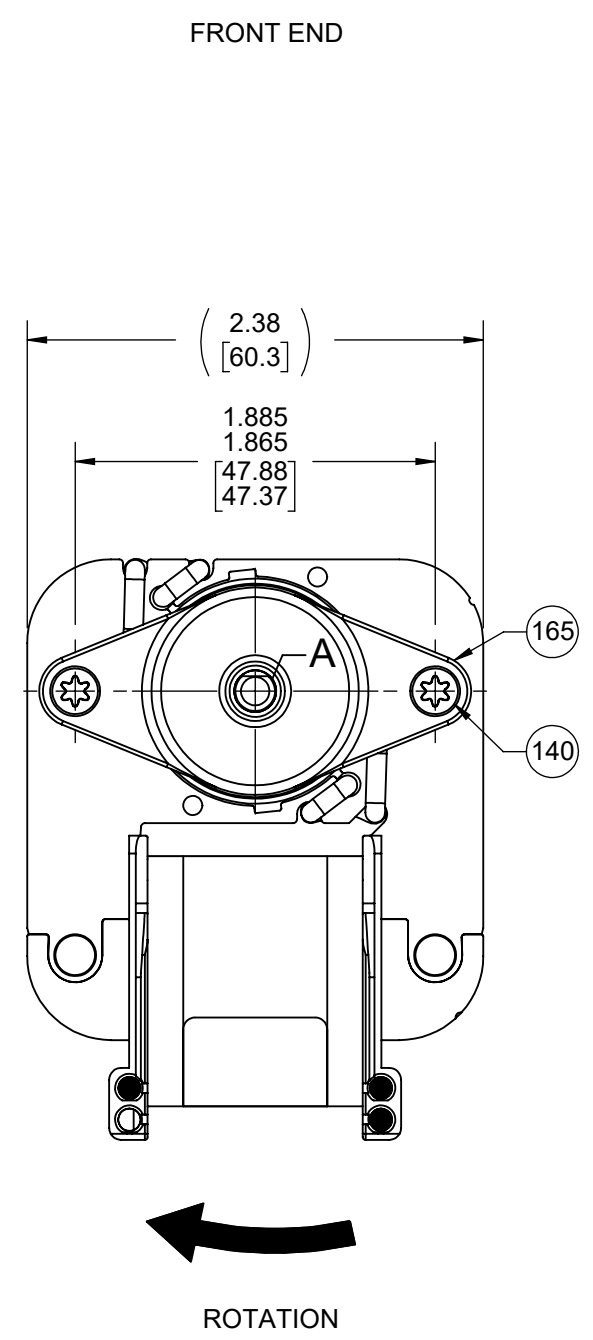
Nameplate Specifications

Output HP	1/50 Hp	Output KW	0.01 kW
Frequency	60 Hz	Voltage	120 V
Current	.86/44 A	Speed	3000 rpm
Service Factor	1	Phase	1
Duty	Air Over	Insulation Class	B
Frame	C-FRAME	Enclosure	Open Air Over
Thermal Protection	Thermally Protected	Ambient Temperature	40 °C
UL	Recognized	CSA	N
CE	N	Number of Speeds	2

Technical Specifications

Electrical Type	Shaded Pole	Starting Method	Across The Line
Poles	2	Rotation	Clockwise Shaft End
Mounting	Extended Studs	Drive End Bearing	Sleeve
Opp Drive End Bearing	Sleeve	Frame Material	Na
Shaft Type	Flat & Groove	Overall Length	3.80 in
Shaft Diameter	0.218 in	Shaft Extension	1.44 in
Outline Drawing	71581189	Connection Drawing	SEE OUTLINE

This is an uncontrolled document once printed or downloaded and is subject to change without notice. Date Created:11/29/2022



LEAD MATERIAL
18 GA. 125°C, 2/64 INSUL.
X-LINKED POLY, (1) RED,
(1) WHITE AND (1) BLACK
W/ TERM HSG.
AMP 1-480305-0
(3) PIN TERMS.
AMP 61118-1

- NOTES:
- SHAFT EXTENSION MEASURED WITH END PLAY PUSHED IN.
 - SHIM BOTH ENDS WITH (1) PC 246 WASHER AND (1) PC 247 WASHER. ADD PC 247 WASHER ON BACK END AS REQUIRED TO MAINTAIN SPECIFIED ENDPLAY. NOTE PC 247 TO BE NEXT TO BEARING.
 - ADD CONNECTION DIAGRAM LABEL TO STATOR ASSEMBLY AS SHOWN. MUST READ SAME DIRECTION AS NAMEPLATE LABEL.
 - STATOR ASSEMBLY COMPLETE IS VARNISHED. ROTOR CORE ASSEMBLY IS COATED WITH TWIN EMULSION.
 - HIPOT PER 88834420.
 - MOTOR MUST START AT 70 VOLTS.
 - PACK 6 PER CONTAINER, 648 MAX. AMOUNT PER PALLET, 12 CONTAINERS PER LAYER, 9 LAYERS PER PALLET.
 - CARTON LABELS MUST ALL FACE ONE DIRECTION TOWARD THE OPEN END OF THE PALLET, PER 88834408
 - NO PACKAGING TAPE OVER CARTON LABEL.

61305568

SAFETY WARNING
This motor must be grounded in accordance with local or national electrical codes to prevent possible injury due to electrical shock

AVERTISSEMENT DE SÉCURITÉ
Ce moteur doit être fondée sur conformément à la réglementation locale ou national électrique codes pour prévenir d'éventuelles blessures en raison de choc électrique

61304338

Connection Diagram

Wht — Common
Blk — High
Red — Low

99581189

FASCO Model: K112
71581189

Assembled In Mexico Ref. 1/50 HP
J238-100 E64080 E48562
120 V 60 Hz Max. Amb 40°C
High 1.10 LRA .86 FLA @ 3000 RPM
Low .57 LRA .44 FLA @ 3000 RPM
T.P. B AO

CUSTOMER:	FASCO DIST.	APPLICATION:	RANGEHOOD VENT								
CUSTOMER PN:	K112	MOTOR WEIGHT:	2 LBS.								
	UP	ENVIRONMENT:	DRY								
MOTOR TYPE		REFERENCE SAMPLE									
MOTOR, C-FRAME											
B	LA	FR	A								
00	58	52	X								
		S	04								
		C	ON								
		E	6								
		B	A								
		A	0								
TYPICAL PERFORMANCE AT 120 VOLTS 60 HZ											
MOTOR SPEED	IDLE		LOADED		LOCKED		BREAK				
	RPM	AMP	WATT	IN OZ	RPM	AMP		WATT			
HIGH	3479	.73	38	6.56	3000	.86	52	4.46	1.10	62	7.77
LOW	3485	.37	20	3.64	3000	.44	28	2.34	.57	33	4.21

DRAWING REVISION	REVISION BY	REV DATE/@ DATE	TOLERANCES (EXCEPT AS NOTED):	DRAWN BY	REGAL® Regal Beloit America, Inc.
ED	JMG	03/15/2021	DEC. INCH mm ANGLE	JMG	
ECO	APPROVED BY	DATE	.X ±0.1 [±3]	DATE	04/20/2015
ECR-0208157	BAA	03/15/2021	.XX ±0.01 [±0.3]	APPROVED BY	KSA
ECO DESCRIPTION			.XXX ±0.005 [±0.13]	DATE	04/20/2015
REVISED BLK AND WHT LEAD LOCS PER SAMPLE B			.XXXX ±0.0005 [±0.013]	REFERENCE	
COPYRIGHT (PER REVISION DATE) REGAL BELOIT AMERICA, INC. ALL RIGHTS RESERVED. PROPRIETARY AND CONFIDENTIAL INFORMATION - THIS DOCUMENT IS THE PROPERTY OF REGAL BELOIT AMERICA, INC. (OWNER) AND CONTAINS OWNER'S PROPRIETARY INFORMATION. ANY PERSON, CORPORATION OR OTHER FIRM RECEIVING IT IS DEEMED, BY RECEIVING IT, TO AGREE THAT IT, AND/OR ANY PART OF IT, SHALL NOT BE DISCLOSED TO ANY PERSON, CORPORATION OR OTHER ENTITY, DUPLICATED, AND/OR USED, EXCEPT AS EXPRESSLY APPROVED IN WRITING IN ADVANCE BY OWNER. THIS DOCUMENT SHALL BE RETURNED TO OWNER UPON REQUEST. IT MAY BE SUBJECT TO CERTAIN RESTRICTIONS UNDER APPLICABLE EXPORT CONTROL LAWS AND REGULATIONS.			REMOVE BURRS & BREAK SHARP EDGES: .003/.015 [.08/.38] X 45°	DESCRIPTION	OUTLINE MOTOR ASSY
			CORNER FILLETS: R.02 [5]	MATERIAL	
			MACHINED SURFACES: .125/ mm 3.2 INCH mm	PROCESS/FINISH	NATURAL
			mm DIMENSIONS IN [BRACKETS] ARE FOR REFERENCE ONLY	THIRD ANGLE PROJECTION	
				SIZE	C
				DRAWING NUMBER	71581189
				SHEET	1 OF 1