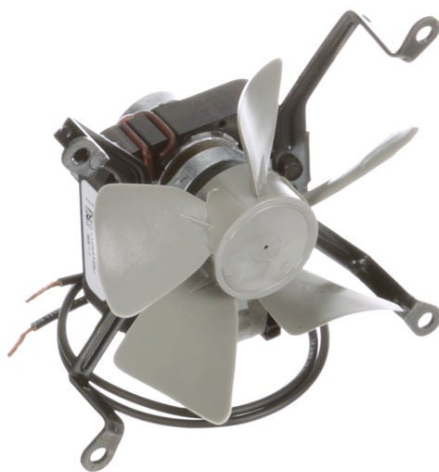


PRODUCT INFORMATION PACKET

FASCO®

Model No: K1574
Catalog No: K1574
1/240 HP C-Frame / Skeleton Motor, 3000 RPM, 120 Volts, OAO



Regal and Fasco are trademarks of Regal Rexnord Corporation or one of its affiliated companies.
©2022 Regal Rexnord Corporation, All Rights Reserved. MC017097E

RegalRexnord



Nameplate Specifications

Output HP	1/240 Hp	Output KW	0.00 kW
Frequency	60 Hz	Voltage	120 V
Current	0.43 A	Speed	3000 rpm
Service Factor	1	Phase	1
Duty	Continuous Air Over	Insulation Class	B
Frame	C-FRAME	Enclosure	Open Air Over
Thermal Protection	Impedance	Ambient Temperature	40 °C
UL	Recognized	CSA	Y
CE	N	Number of Speeds	1

Technical Specifications

Electrical Type	Shaded Pole	Starting Method	Across The Line
Poles	2	Rotation	Clockwise Shaft End
Mounting	Bracket	Drive End Bearing	Sleeve
Opp Drive End Bearing	Sleeve	Frame Material	Steel
Shaft Type	Special Extension	Frame Length	1.39 in
Shaft Diameter	0.181 in	Shaft Extension	0.95 in
Outline Drawing	71583128		

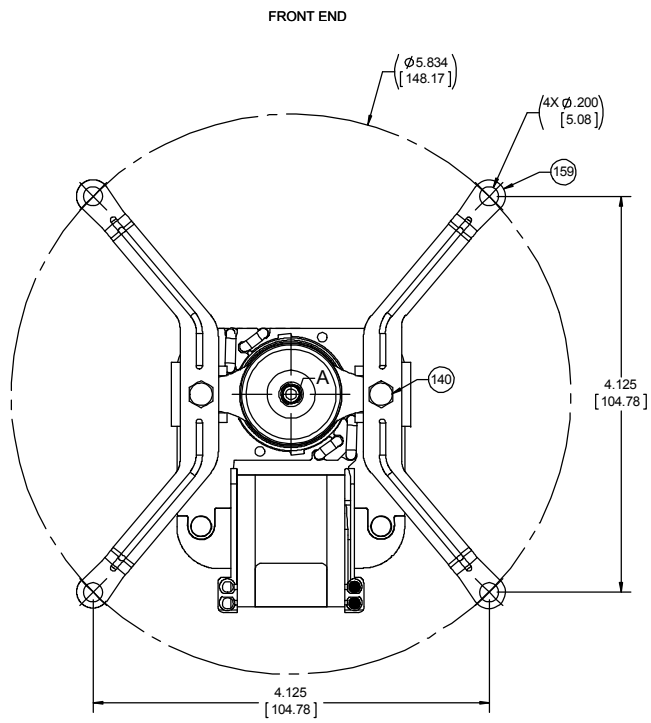
This is an uncontrolled document once printed or downloaded and is subject to change without notice. Date Created:11/29/2022

4

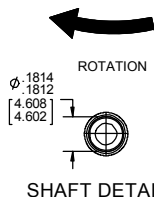
3

2

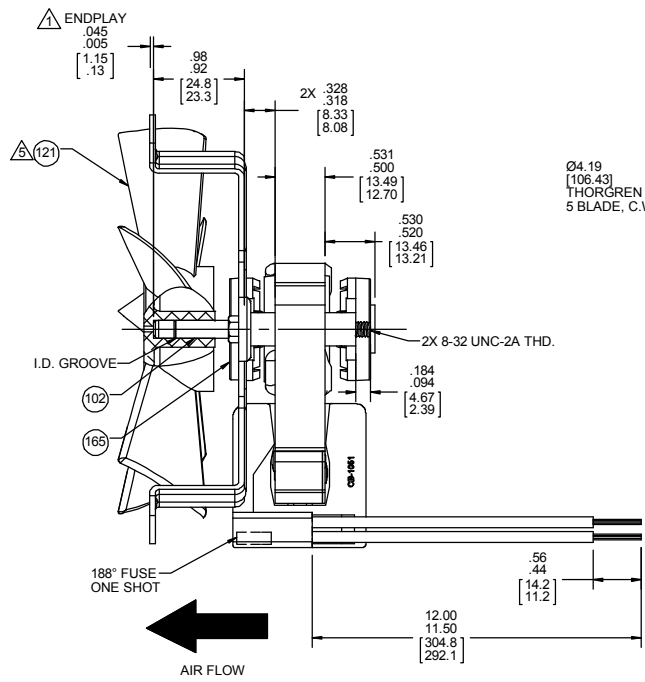
1



(FAN REMOVED FOR CLARITY)

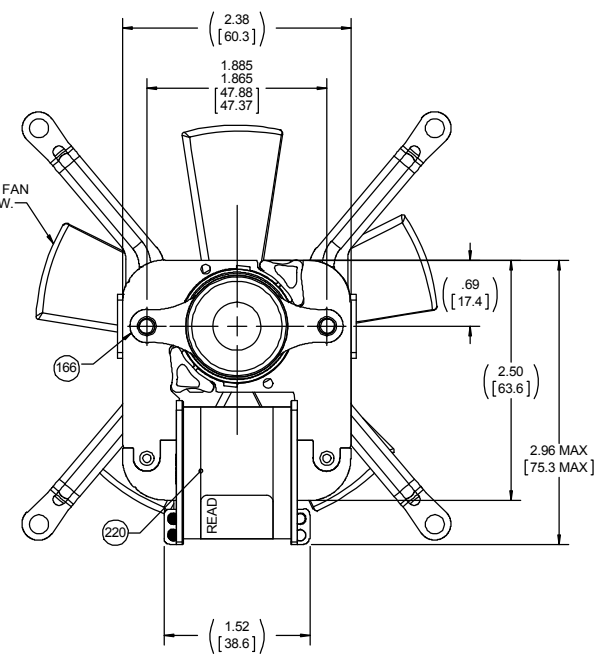


SHAFT DETAIL A



AIR FLOW

LEAD MATERIAL
18 GA, 125°C 2/64 INSUL.
X-LINKED POLY. (2) BLACK



- NOTES:
- SHAFT EXTENSION MEASURED WITH END PLAY PUSHED IN.
 - NO SHIMS REQUIRED ON THE BACK END. SHIM FRONT END WITH (1) PC 246 SPACER AND (1) MINIMUM TO (4) MAXIMUM OF 247 WASHER TO MAINTAIN SPECIFIED ENDPLAY.
 - STATOR CORE, STATOR BAR AND ROTOR CORE ARE COATED WITH TWIN EMULSION.
 - APPLY (1) DROP OF LUBRICANT TO AID START UP.
 - PRESS PC 121 FAN ON UNTIL HUB IS FLUSH WITH END OF SHAFT.
 - MOTOR MUST START AT 70 VOLTS.
 - HIPOT PER 88834420.
 - PACK 1 PER CONTAINER, 35 CONTAINERS PER LAYER, 7 LAYERS PER PALLET, 245 MAX. PER PALLET.
 - CARTON LABELS MUST ALL FACE ONE DIRECTION TOWARD THE OPEN END OF THE PALLET.
 - NO PACKAGING TAPE OVER CARTON LABELS.

99583128 61299553

FASCO Model: K1574
71583128

Assembled in Mexico

J238-050 E64080 E33433

120 V 60 Hz .51 LRA .43 FLA

Max Amb: 40°C 1/240 HP

Z.P. OSB B 3000 RPM AO

CUSTOMER:	FASCO DIST.	APPLICATION:	
CUSTOMER PN:	K1574	MOTOR WEIGHT:	1.2 LBS.
UP		ENVIRONMENT:	
HORIZONTAL	MOTOR TYPE		REFERENCE SAMPLE
	B	LA	FR
DOWN	FB	S2	X
TYPICAL PERFORMANCE AT 120 VOLTS 60 HZ		A	S
		C	E
		B	A
		0	0
IDLE		LOADED	
LOCKED		BREAK	
MOTOR SPEED	RPM	AMP	WATT
	3410	.40	19
			1.4
			3000
		.43	22
			1.6
		.51	28
			2.4

DRAWING REVISION	REVISION BY	REV DATE/DATE	TOLERANCES (EXCEPT AS NOTED)	DRAWN BY	PLA		Regal Beloit America, Inc.
AB	BAA	7/18/2019	DEC INCH .001 .005 .010 .015 .020 .030 .040 .050 .060 .070 .080 .090 .100 .125 .150 .175 .200 .250 .300 .375 .450 .500 .625 .750 .875 1.000 1.250 1.500 1.750 2.000 2.500 3.000 3.750 4.500 5.000 6.000 7.500 9.000 10.000 12.500 15.000 18.000 20.000 25.000 30.000 37.500 45.000 50.000 60.000 75.000 90.000 100.000 125.000 150.000 175.000 200.000 250.000 300.000 375.000 450.000 500.000 600.000 750.000 900.000 1000.000	DATE	1/17/2019		DESCRIPTION
ECO-0170228	JMG	7/18/2019	CHANGE LEADS TO OPPOSITE SIDE	APPROVED BY	JMG		MOTOR ASSY
ECO DESCRIPTION CHANGE LEADS TO OPPOSITE SIDE REMOVE BURRS & BREAK SHARP EDGES: .003/.015 [.08/.38] X 45° CORNER FILLETS: R.02 [.5] MACHINED SURFACES: 125/32 INCH/mmm DIMENSIONS IN [BRACKETS] ARE FOR REFERENCE ONLY				DATE	1/17/2019		
COPYRIGHT PER REVISION DATE: REGAL BELOIT AMERICA, INC. ALL RIGHTS RESERVED. PROPRIETARY AND CONFIDENTIAL INFORMATION. THIS DOCUMENT IS THE PROPERTY OF REGAL BELOIT AMERICA, INC. FORMERLY AND CONTAINING OWNERS PROPRIETARY INFORMATION. ANY PERSON, CORPORATION OR OTHER FIRM RECEIVING IT IS DEEMED BY RECEIVING IT, TO AGREE THAT IT, AND/OR ANY PART OF IT, SHALL NOT BE DISCLOSED TO ANY PERSON, CORPORATION OR OTHER ENTITY, DUPLICATED, AND/OR USED, EXCEPT AS EXPRESSLY APPROVED IN WRITING IN ADVANCE BY OWNER. THIS DOCUMENT SHALL BE RETURNED TO OWNER UPON REQUEST. IT MAY BE SUBJECT TO CERTAIN RESTRICTIONS UNDER APPLICABLE EXPORT CONTROL LAWS AND REGULATIONS.				REFERENCE			
				THIRD ANGLE PROJECTION		SIZE	DRAWING NUMBER
						C	71583128
							PROCESS/FINISH
							NATURAL
							SHEET
							1 OF 1

4

3

2

1