

PRODUCT INFORMATION PACKET

FASCO®

Model No: K611
Catalog No: K611
1/100 HP C-Frame / Skeleton Motor, 3000 RPM, 120 Volts, , OAO



Regal and Fasco are trademarks of Regal Rexnord Corporation or one of its affiliated companies.
©2022 Regal Rexnord Corporation, All Rights Reserved. MC017097E

RegalRexnord



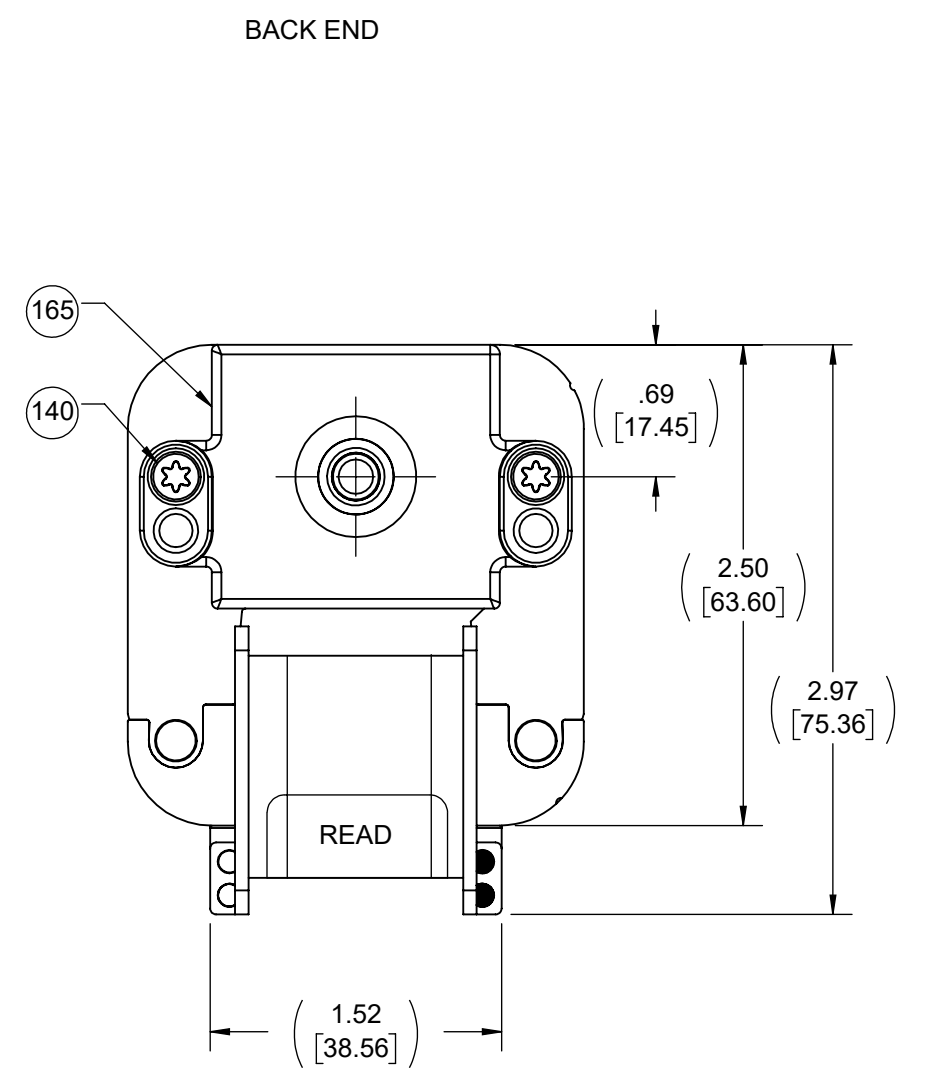
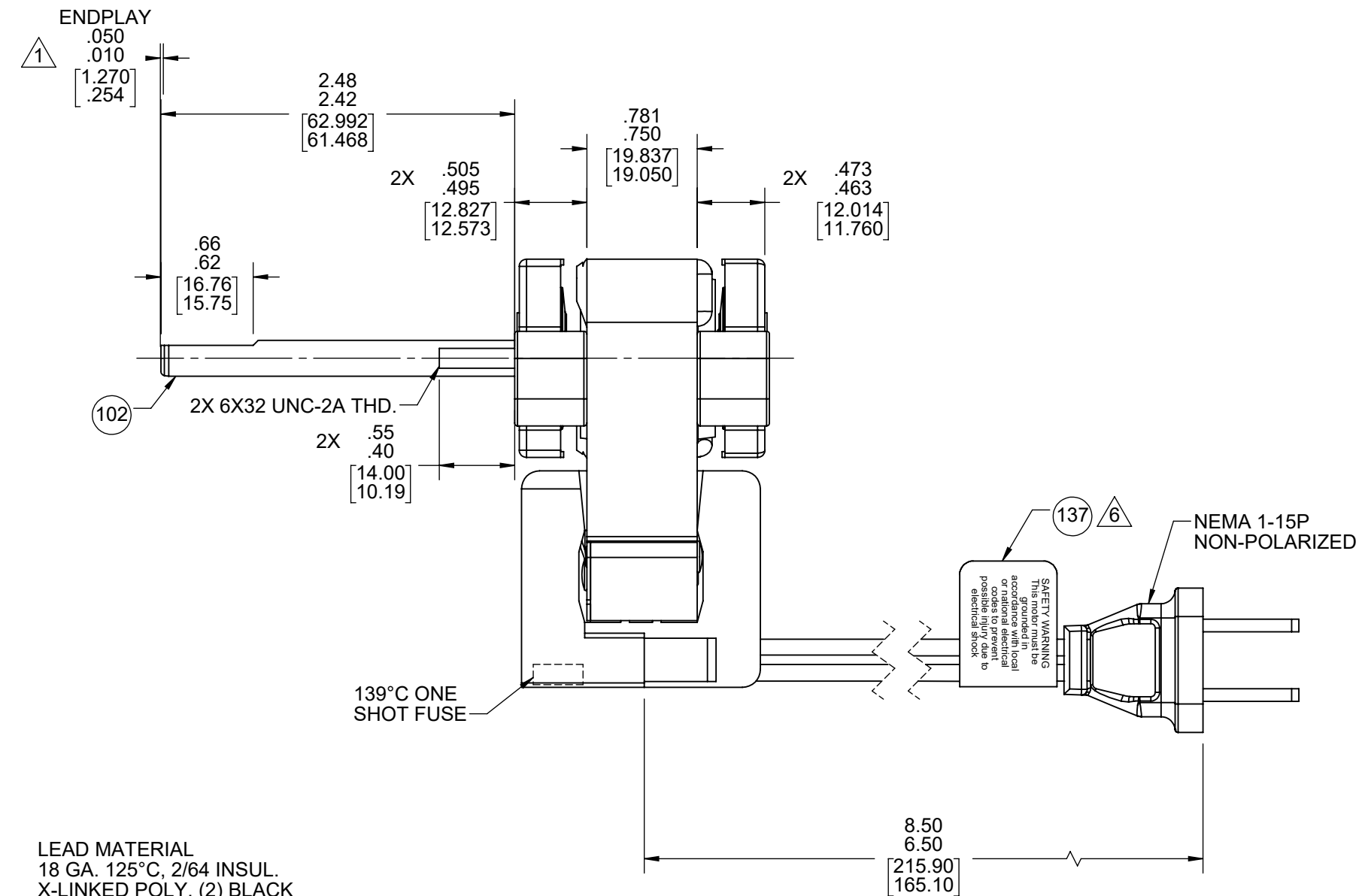
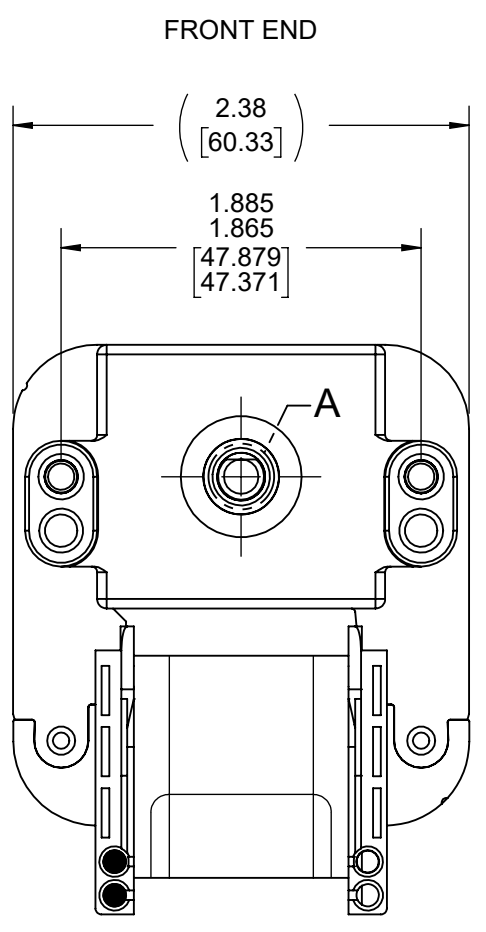
Nameplate Specifications

| | | | |
|--------------------|---------------------|---------------------|---------------|
| Output HP | 1/100 Hp | Output KW | 0.01 kW |
| Frequency | 60 Hz | Voltage | 120 V |
| Current | .63 A | Speed | 3000 rpm |
| Service Factor | 1 | Phase | 1 |
| Duty | Air Over | Insulation Class | B |
| Frame | C-FRAME | Enclosure | Open Enclosed |
| Thermal Protection | Thermally Protected | Ambient Temperature | 40 °C |
| UL | Recognized | CSA | N |
| CE | N | Number of Speeds | 1 |

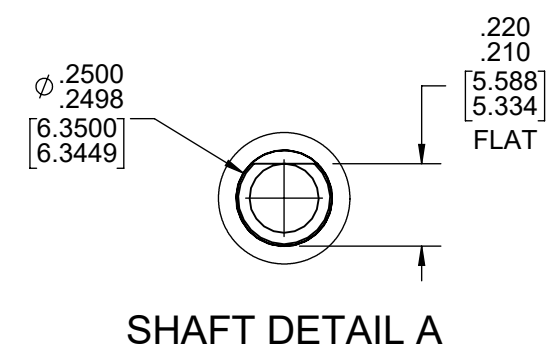
Technical Specifications

| | | | |
|-----------------------|----------------|-------------------|----------------------------|
| Electrical Type | Shaded Pole | Starting Method | Across The Line |
| Poles | 2 | Rotation | Counterclockwise Shaft End |
| Mounting | Extended Studs | Drive End Bearing | Sleeve |
| Opp Drive End Bearing | Sleeve | Frame Material | Na |
| Shaft Type | Flat | Overall Length | 4.25 in |
| Shaft Diameter | 0.250 in | Shaft Extension | 2.45 in |
| Outline Drawing | 71581214 | | |

This is an uncontrolled document once printed or downloaded and is subject to change without notice. Date Created:11/29/2022



ROTATION



LEAD MATERIAL
18 GA. 125°C, 2/64 INSUL.
X-LINKED POLY, (2) BLACK

NOTES:

- SHAFT EXTENSION MEASURED WITH END PLAY PUSHED IN.
- SHIM BOTH ENDS WITH (1) PC 246 WASHER AND (1) PC 247 WASHER. ADD PC 247 WASHER ON BACK END AS REQUIRED TO MAINTAIN SPECIFIED ENDPLAY.
- MOTOR MUST START AT 70 VOLTS.
- HIPOT PER 88834420.
- ROTOR CORE, STATOR CORE AND STATOR BAR ASSEMBLIES ARE COATED WITH TWIN EMULSION.
- FOLD PC 137 IN HALF AROUND CORD.
- PACK 6 PER CONTAINER, 12 CONTAINERS PER LAYER, 9 LAYERS PER PALLET, 648 MAX. AMOUNT PER PALLET. PACKING ASSEMBLY 87854178, PER 88834200 AND 88834408.
- CARTON LABELS MUST ALL FACE ONE DIRECTION TOWARD THE OPEN END OF THE PALLET. SEE 88834408.
- NO PACKAGING TAPE OVER CARTON LABEL.

61305568

SAFETY WARNING
This motor must be grounded in accordance with local or national electrical codes to prevent possible injury due to electrical shock

AVERTISSEMENT DE SÉCURITÉ
Ce moteur doit être fondée sur conformément à la réglementation locale ou national électrique codes pour prévenir d'éventuelles blessures en raison de choc électrique

61299553 99581214

Model: K611
71581214

120 V 60 Hz
Ref. 1/100 HP .78 LRA
.63 FLA 3000 RPM
Max Amb 40°C AO
E64080 E48562
Class B
T.P. Assembled in Mexico

| | | | | | | | | | | | |
|--|-------------|------------------|----------|-------|--------|-----|-------|-------|-----|----|------|
| CUSTOMER: | FASCO DIST. | APPLICATION: | | | | | | | | | |
| CUSTOMER PN: | K611 | MOTOR WEIGHT: | 1.75 LBS | | | | | | | | |
| | | ENVIRONMENT: | DRY | | | | | | | | |
| MOTOR TYPE | | REFERENCE SAMPLE | | | | | | | | | |
| MOTOR, C-FRAME | | | | | | | | | | | |
| B | LA | FR | A | | | | | | | | |
| 00 | 58 | 52 | X | | | | | | | | |
| TYPICAL PERFORMANCE AT 120 VOLTS 60 HZ | | | | | | | | | | | |
| MOTOR SPEED | IDLE | | LOADED | | LOCKED | | BREAK | | | | |
| | RPM | AMP | WATT | IN OZ | RPM | AMP | WATT | IN OZ | | | |
| | 3441 | .56 | 28 | 3.88 | 3000 | .63 | 36 | 2.96 | .78 | 43 | 4.99 |

| | | | | | | |
|--|-------------|------------|---|------------------------|------------|-----------------------------------|
| DRAWING REVISION | REVISION BY | DATE | TOLERANCES UNLESS OTHERWISE SPECIFIED: | DRAWN BY | DATE | REGAL™ Regal Beloit America, Inc. |
| AB | JMG | 01/26/2021 | DEC. INCH mm ANGLE ±1° | JMG | 05/04/2018 | |
| ECO | APPROVED BY | DATE | .X ±0.1 [±2.5] | PLA | 05/04/2018 | DESCRIPTION |
| ECR-0206433 | BAA | 01/26/2021 | .XX ±0.01 [±0.25] | | | OUTLINE MOTOR ASSY |
| ECO DESCRIPTION | | | .XXX ±0.005 [±0.127] | DATE | 05/04/2018 | MATERIAL |
| REVISED FUSE, SWEDGED IBAR AND RYNITE BOBBIN | | | .XXXX ±0.0005 [±0.0127] | REFERENCE | | NATURAL |
| COPYRIGHT REGAL BELOIT AMERICA, INC. ALL RIGHTS RESERVED. PROPRIETARY AND CONFIDENTIAL INFORMATION - THIS DOCUMENT IS THE PROPERTY OF REGAL BELOIT AMERICA, INC. ("OWNER") AND CONTAINS OWNER'S PROPRIETARY INFORMATION. ANY PERSON, CORPORATION OR OTHER FIRM RECEIVING IT IS DEEMED, BY RECEIVING IT, TO AGREE THAT IT, AND/OR ANY PART OF IT, SHALL NOT BE DISCLOSED TO ANY PERSON, CORPORATION OR OTHER ENTITY, DUPLICATED, AND/OR USED, EXCEPT AS EXPRESSLY APPROVED IN WRITING IN ADVANCE BY OWNER. THIS DOCUMENT SHALL BE RETURNED TO OWNER UPON REQUEST. IT MAY BE SUBJECT TO CERTAIN RESTRICTIONS UNDER APPLICABLE EXPORT CONTROL LAWS AND REGULATIONS. | | | REMOVE BURRS & BREAK SHARP EDGES: 003/015 [076/381] X 45° | THIRD ANGLE PROJECTION | SIZE C | DRAWING NUMBER |
| | | | CORNER FILLETS: R.02 [51] | | | 71581214 |
| | | | MACHINED SURFACES: .125 INCH mm 3.2 | | | SHEET 1 OF 1 |
| | | | mm SHOWN IN [BRACKETS] | | | |