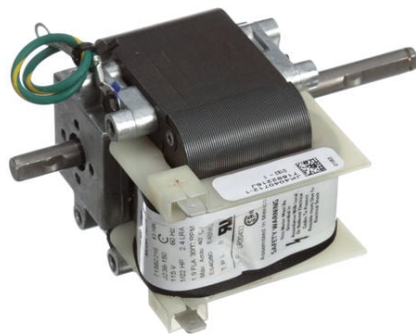


PRODUCT INFORMATION PACKET

FASCO®

Model No: K674
Catalog No: K674
1/22 HP C-Frame / Skeleton Motor, 3000 RPM, 115 Volts, , OAO



Regal and Fasco are trademarks of Regal Rexnord Corporation or one of its affiliated companies.
©2025 Regal Rexnord Corporation, All Rights Reserved. MC017097E

RegalRexnord



Nameplate Specifications

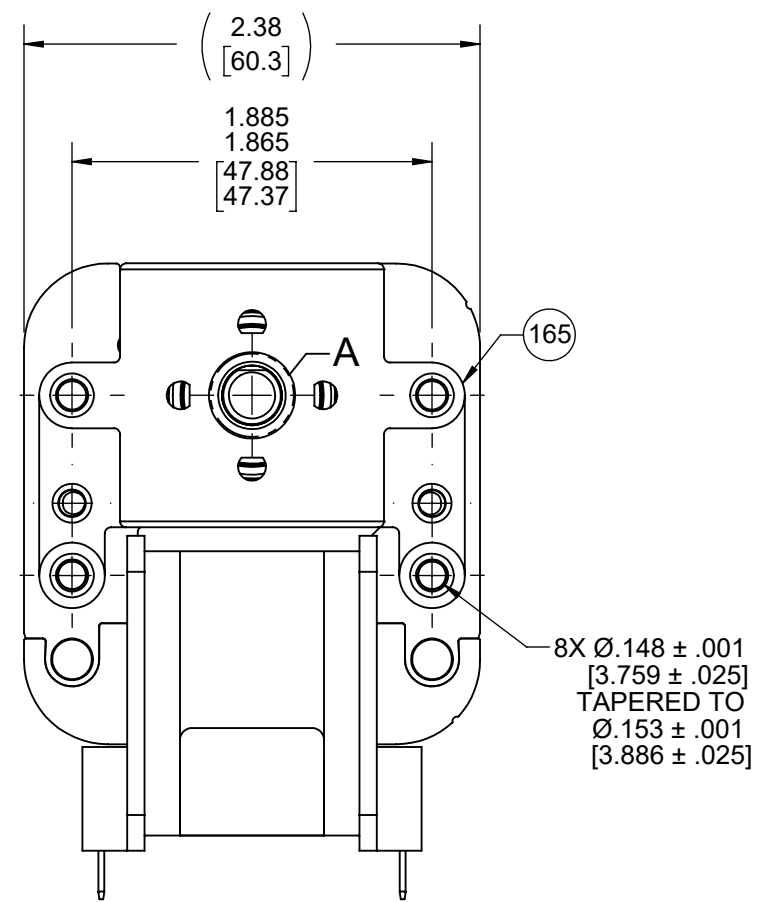
Phase	1	Output HP	1/22 Hp
Output KW	0.04 kW	Voltage	115 V
Speed	3000 rpm	Frame	C-FRAME
Enclosure	Open Enclosed	Thermal Protection	Thermally Protected
Ambient Temperature	40 °C	Frequency	60 Hz
Current	1.9 A	Duty	Air Over
Insulation Class	B	UL	Recognized
CSA	Y	CE	N
Number of Speeds	1		

Technical Specifications

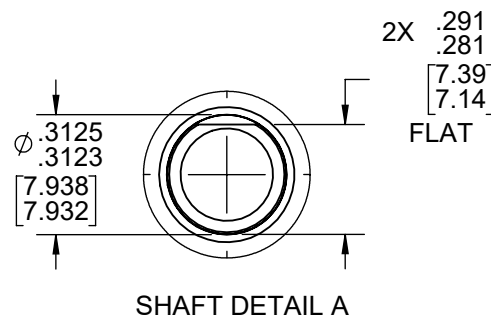
Electrical Type	Shaded Pole	Starting Method	Across The Line
Poles	2	Rotation	Clockwise
Mounting	Extended Studs	Drive End Bearing	Ball
Opp Drive End Bearing	Ball	Frame Material	Na
Shaft Type	Flat & Groove	Overall Length	5.18 in
Shaft Diameter	0.311 in	Shaft Extension	1.90 in
Outline Drawing	71582216		

This is an uncontrolled document once printed or downloaded and is subject to change without notice. Date Created:01/13/2025

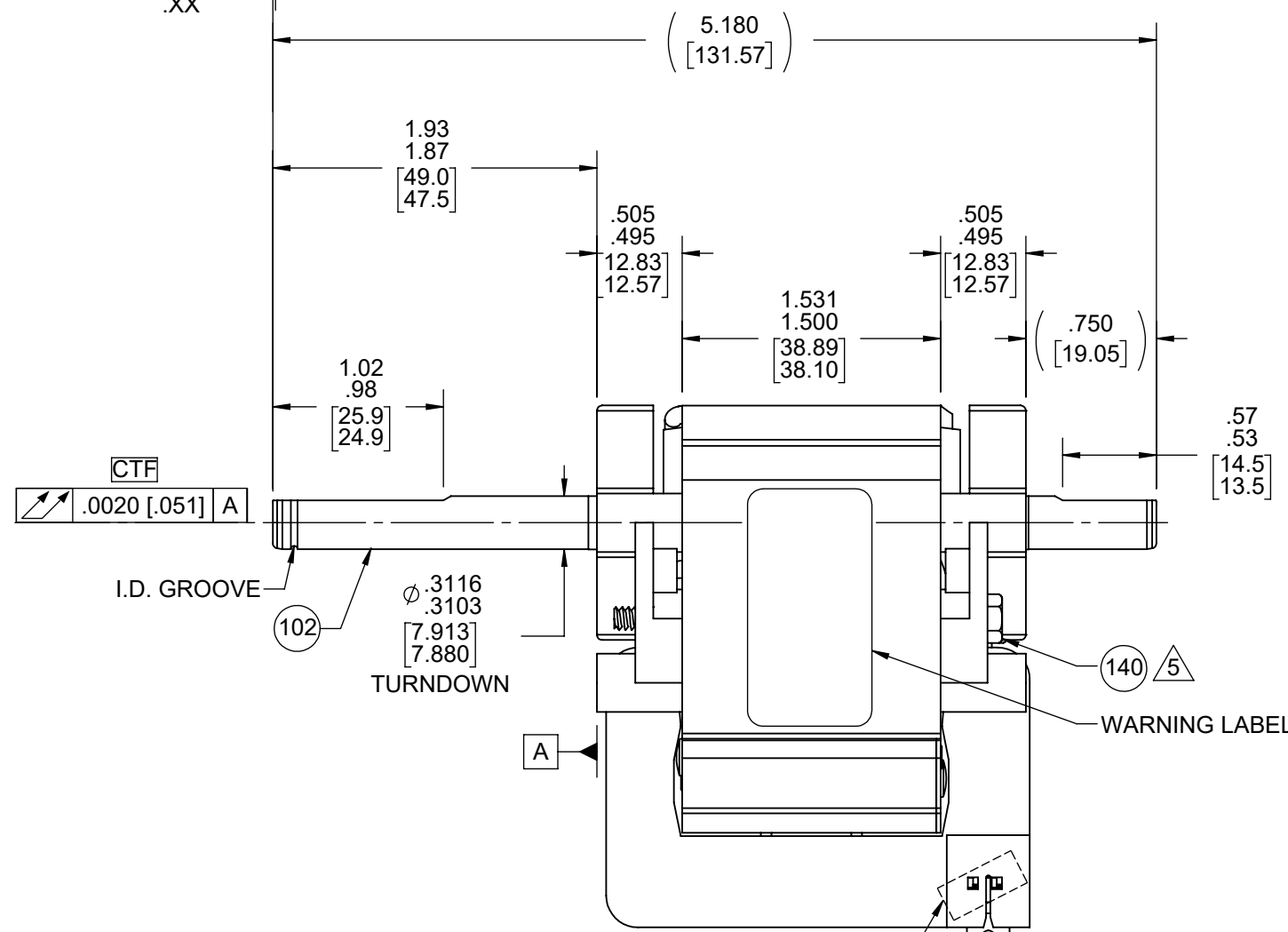
FRONT END



ROTATION

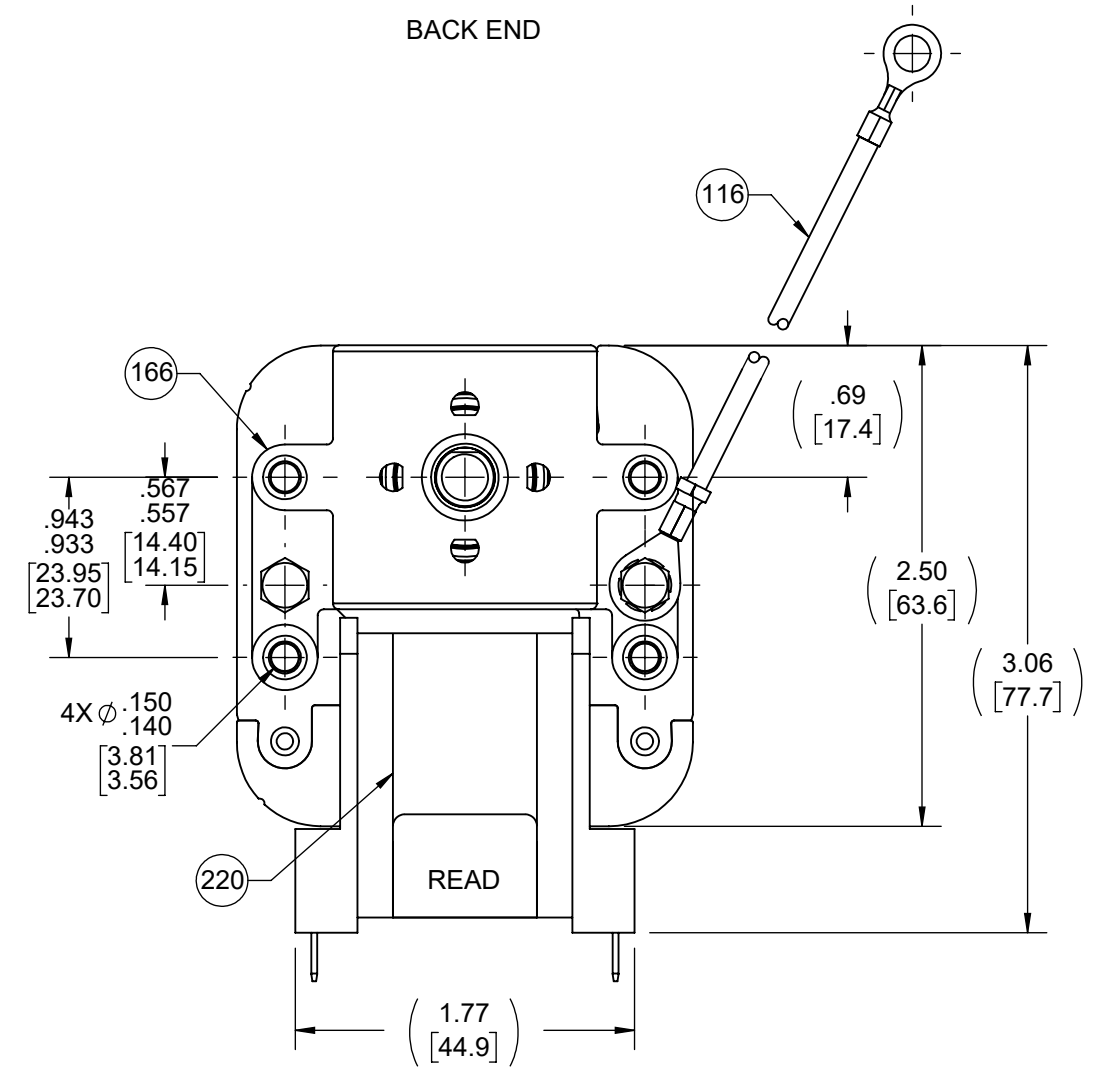


ENDPLAY
.XX
.XX



GROUND LEAD
18 GA. 125°C, 2/64 INSUL.
X-LINKED POLY, GRN/YEL
6.53/6.23 [165.9/158.2]
RING TERM.
AMP 41333

BACK END



NOTES:

- MOTOR HAS 416 SS SHAFT. FLAT ORIENTATION IS NOT REQUIRED.
- ROTOR/SHAFT TRAVEL WITH 52001 RETAINERS REMOVED TO BE .005-.025 [13-.64] ENDPLAY AFTER 1ST PRESS. [CTF]
- PRESS BRACKET ASSEMBLIES ONTO ROTOR ASSEMBLY USING SPI-1024 BALL BEARING SET-UP.
- NO LOAD TEST CURRENT 1.80 A MAX. AT 115V.
- SCREW EXTENSION NOT TO EXTEND PAST THE .500 [12.70] DIMENSION. SCREWS TO BE TORQUED TO 10-15 LBS.
- STATOR ASSEMBLY COMPLETE IS VARNISHED. ROTOR CORE ASSEMBLY IS COATED WITH TWIN EMULSION.
- PACK 1 PER CONTAINER, 36 CONTAINERS PER LAYER, 4 LAYERS PER PALLET, 144 MAX. AMT. PER PALLET. PACKING ASSY 87855410.
- PACK 1 KIT PC 205 ON TOP OF MOTOR IN CARTON.
- CARTON LABELS MUST ALL FACE ONE DIRECTION TOWARD THE OPEN END OF THE PALLET. PER 88834408.
- NO PACKING TAPE OVER CARTON LABEL.
- HIPOT PER 88834420.
- MOTOR MUST START AT 70 VOLTS.
- [CTF] = CRITICAL TO FUNCTION.

61305568

SAFETY WARNING
This motor must be grounded in accordance with local or national electrical codes to prevent possible injury due to electrical shock



AVERTISSEMENT DE SÉCURITÉ
Ce moteur doit être fondée sur conformément à la réglementation locale ou national électrique codes pour prévenir d'éventuelles blessures en raison de choc électrique

61299553

99582216

FASCO™
Model: K674

71582216
J238-150
115 V 60 Hz
1/22 HP 2.4 LRA
1.9 FLA 3000 RPM
Max Amb 40°C
E64080 E48562

T.P.L. B
T.P. LR20432

Assembled In Mexico

CUSTOMER:	FASCO DIST.	APPLICATION:	DISTRIBUTION:				
CUSTOMER PN:	K674	MOTOR WEIGHT:	3 LBS				
		ENVIRONMENT:	DRY				
MOTOR TYPE		REFERENCE SAMPLE					
MOTOR, C-FRAME							
B	LA	FR	A				
00	58	52	X				
		S	06				
		C	AN				
		E	5				
		B	0				
		A	0				
TYPICAL PERFORMANCE AT 115 VOLTS 60 HZ							
MOTOR SPEED	IDLE		LOADED		LOCKED		BREAK
	RPM	AMP	WATT	IN OZ	RPM	AMP	
3530	1.50	72	15.1	3000	1.85	109	6.7
							2.36
							123
							16.4

DRAWING REVISION AB	REVISION BY JMG	REV DATE/© DATE 01/07/2025	TOLERANCES (EXCEPT AS NOTED): DEC. INCH mm ANGLE	DRAWN BY BAA	Regal Rexnord Regal Beloit America, Inc.
REQUEST NUMBER ECR-0239719	APPROVED BY MLS	DATE 01/07/2025	.X ±0.1 [±3] .XX ±0.01 [±0.3] .XXX ±0.005 [±0.13] .XXXX ±0.0005 [±0.013]	DATE 03/16/2020	
REQUEST NUMBER DESCRIPTION CORRECT GRD AMP NUMBER AND UPDATED TO STD			REMOVE BURRS & BREAK SHARP EDGES: .003/.015 [.08/.38] X 45° CORNER FILLETS: R.02 [.5] MACHINED SURFACES: .125/ mm 3.2 INCH mm	APPROVED BY MLS	DESCRIPTION MOTOR ASSY
COPYRIGHT (PER REVISION DATE) REGAL BELOIT AMERICA, INC. ALL RIGHTS RESERVED. PROPRIETARY AND CONFIDENTIAL INFORMATION - THIS DOCUMENT IS THE PROPERTY OF REGAL BELOIT AMERICA, INC. (OWNER) AND CONTAINS OWNER'S PROPRIETARY INFORMATION. ANY PERSON, CORPORATION OR OTHER FIRM RECEIVING IT IS DEEMED, BY RECEIVING IT, TO AGREE THAT IT, AND/OR ANY PART OF IT, SHALL NOT BE DISCLOSED TO ANY PERSON, CORPORATION OR OTHER ENTITY, DUPLICATED, AND/OR USED, EXCEPT AS EXPRESSLY APPROVED IN WRITING IN ADVANCE BY OWNER. THIS DOCUMENT SHALL BE RETURNED TO OWNER UPON REQUEST. IT MAY BE SUBJECT TO CERTAIN RESTRICTIONS UNDER APPLICABLE EXPORT CONTROL LAWS AND REGULATIONS.			mm DIMENSIONS IN [BRACKETS] ARE FOR REFERENCE ONLY	DATE 03/16/2020	MATERIAL NATURAL
			THIRD ANGLE PROJECTION	SIZE C	DRAWING NUMBER 71582216
					SHEET 1 OF 1