

PRODUCT INFORMATION PACKET



Model No: LM24616
Catalog No: LM24616

General Purpose Motor, 1 HP, 1 Ph, 60 Hz, 115/208-230 V, 1800 RPM, 56C Frame, TEFC



Regal and Leeson are trademarks of Regal Rexnord Corporation or one of its affiliated companies.
©2022 Regal Rexnord Corporation, All Rights Reserved. MC017097E



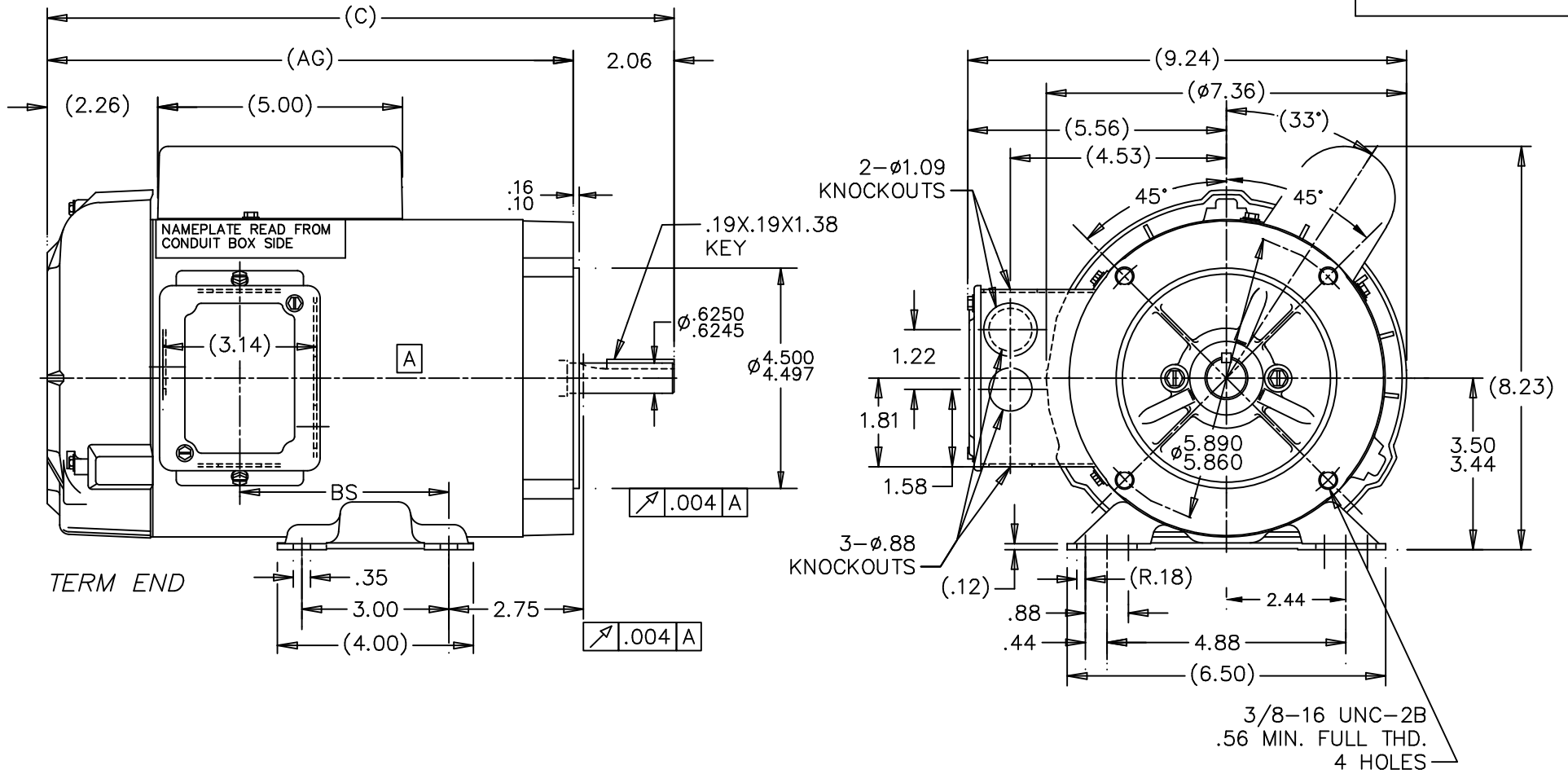


Nameplate Specifications

Output HP	1 Hp	Output KW	0.75 kW
Frequency	60 Hz	Voltage	115/208-230 V
Current	13.4/6.8-6.7 A	Speed	1725 rpm
Service Factor	1.15	Phase	1
Efficiency	72 %	Power Factor	69.5
Duty	Continuous	Insulation Class	B
Design Code	NO DESIGN CODE	KVA Code	J
Frame	56C	Enclosure	Totally Enclosed Fan Cooled
Thermal Protection	No Protection	Ambient Temperature	40 °C
Drive End Bearing Size	6203	Opp Drive End Bearing Size	6203
UL	Recognized	CSA	Y
CE	N	IP Code	43
Number of Speeds	1		


Technical Specifications

Electrical Type	Capacitor Start Induction Run	Starting Method	Across The Line
Poles	4	Rotation	Selective Counterclockwise
Resistance Main	0 Ohms	Mounting	Rigid Base
Motor Orientation	Horizontal	Drive End Bearing	Ball
Opp Drive End Bearing	Ball	Frame Material	Rolled Steel
Shaft Type	NEMA 56	Overall Length	12.82 in
Frame Length	7.56 in	Shaft Diameter	0.625 in
Shaft Extension	1.88 in	Assembly/Box Mounting	F1 ONLY
Outline Drawing	100126LN-756	Connection Drawing	102005-51-LN



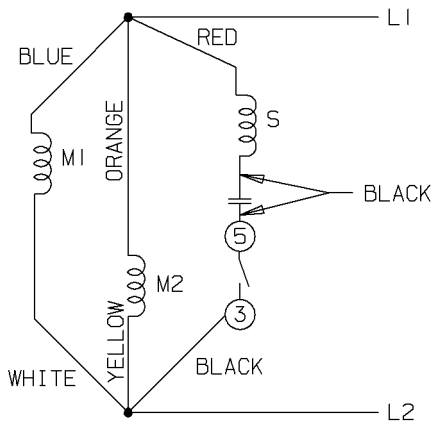
DASH	FR.	C	AG	BS
656	56-65	11.82	9.75	3.25
706	56-70	12.32	10.25	3.75
756	56-75	12.82	10.75	4.25

NOTE:
CONDUIT BOX CAN BE ROTATED 180°

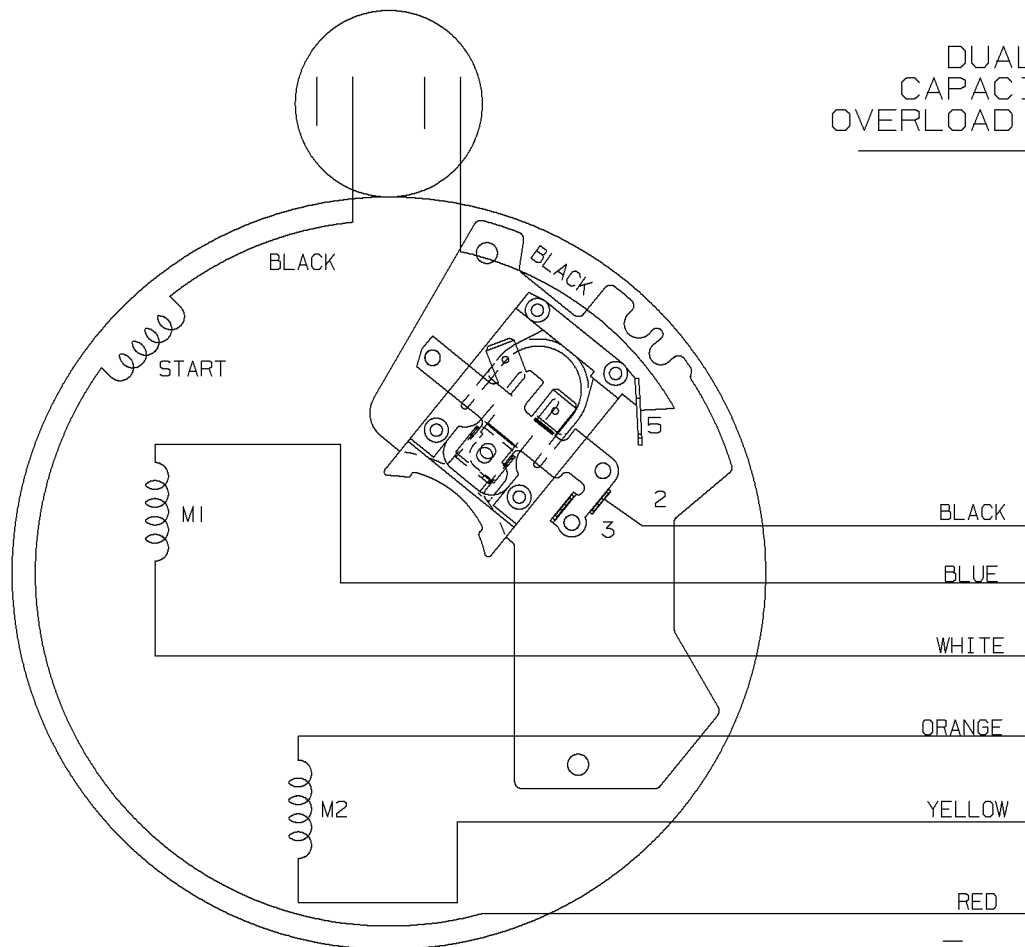
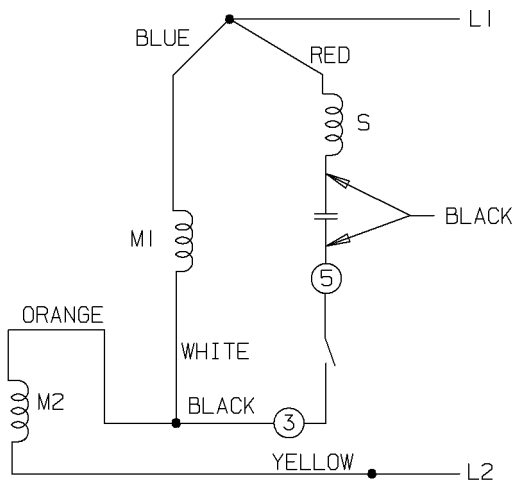
		TOLERANCES UNLESS SPECIFIED				DRAWN TJB 11-29-1999			
		DEC.	INCHES			CHK ML 11-29-1999			
		.X	±.1			APPD GK 11-29-1999			
		.XX	±.03			SCALE 5=16			
			.XXX	±.005	TITLE OUTLINE		REF		
			.XXXX	±.0005	56 FR. - 1ø TEFC - C-FACE		FMF		
1	NEW DRAWING	TJB 11-29-1999	CHK	ANG	MAT'L.	FINISH	PREV		
NO.	REVISION	BY & DATE	RFP	DIST PR	CAD FILE 100126LN	SIZE A	DRAWING NO. 100126LN	PAGE OF 1	REV. 1

THIS DRAWING IN DESIGN AND DETAIL IS OUR PROPERTY AND MUST NOT BE USED EXCEPT IN CONNECTION WITH OUR WORK ALL RIGHTS OF DESIGN AND INVENTION ARE RESERVED THIS IS AN ELECTRONICALLY GENERATED DOCUMENT - DO NOT SCALE THIS PRINT

LOW VOLTAGE - C.C.W.

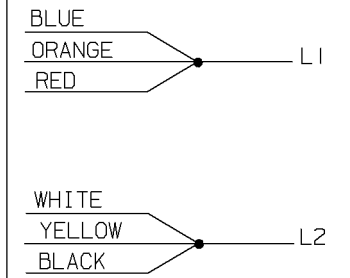


HIGH VOLTAGE - C.C.W.

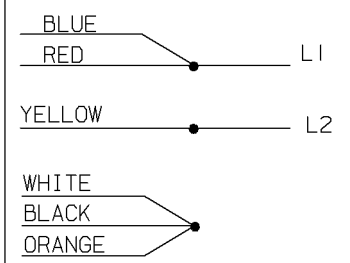


DUAL VOLTAGE
CAPACITOR START NO
OVERLOAD SELECT ROTATION

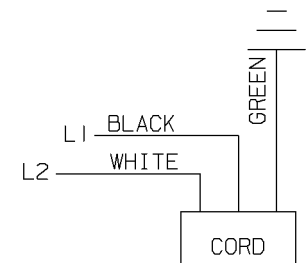
LOW VOLT. - C.C.W. ROT.




HIGH VOLT. - C.C.W. ROT.



FOR C.W. ROTATION EITHER
VOLTAGE INTERCHANGE
RED WITH BLACK LEAD



2	05-21-2001	ADDED VIEW OF CORD	MU37277	HLB		✓ MAX. SURFACE ROUGHNESS UNLESS OTHERWISE NOTED FINISH MATERIAL	UNLESS OTHERWISE SPECIFIED DIMENSIONS ARE IN INCHES TOL. ON XX±.02 XXX±.005 XXXX±.0005 ANGLES± 7'30"	DRAWN BY BLR 09-29-1999 CHKD BY DRS 09-29-1999 APPD BY GK 09-29-1999	
1	09-29-1999	NEW DRAWING		BLR					
REV	DATE	CHANGE		NAME		PART NAME CONNECTION DIAGRAM			DRWG NO A-102005-51-LN

PURCHASED CADD FILE NO. 102005-51-LN



**2100 WASHINGTON ST.
GRAFTON, WI
PH. 262-277-8810**

CERTIFICATION DATA SHEET

CONN. DIAGRAM: 102005-51-LN

OUTLINE: A-100126LN-756

WINDING #: ZC407 3

CATALOG : LM24616

MOUNTING: F1 ONLY

TYPICAL MOTOR PERFORMANCE DATA

HP	kW	SYNC. RPM	F.L. RPM	FRAME	ENCLOSURE	KVA CODE	DESIGN
1	0.75	1800	1725	56C	TEFC	J	NO DESIGN CODE

PH	Hz	VOLTS	AMPS	START TYPE	DUTY	INSL	S.F.	AMB°C
1	60	115/208-230	13.4/6.8-6.7	ACROSS THE LINE	CONTINUOUS	B3	1.15	40

FULL LOAD EFF:	72	3/4 LOAD EFF:	70	1/2 LOAD EFF:	64.3	GTD. EFF	ELEC. TYPE
FULL LOAD PF:	69.5	3/4 LOAD PF:	60.5	1/2 LOAD PF:	49	68	CAP START IND RUN

F.L. TORQUE	LOCKED ROTOR AMPS	L.R. TORQUE	B.D. TORQUE	F.L. RISE°C
48.3 OZ-FT	69.4 / 34.7	145 OZ-FT 300 %	122 OZ-FT 253 %	75

SOUND PRESSURE @ 3 FT.	SOUND POWER	ROTOR WK^2	MAX. WK^2	SAFE STALL TIME	STARTS / HOUR	APPROX. MOTOR WGT
0 dBA	10 dBA	0 LB-FT^2	0 LB-FT^2	0 SEC.	0	33 LBS.

***** SUPPLEMENTAL INFORMATION *****

DE BRACKET TYPE	ODE BRACKET TYPE	MOUNT TYPE	ORIENTATION	SEVERE DUTY	HAZARDOUS LOCATION	DRIP COVER	SCREENS	PAINT
C-FACE	STANDARD	RIGID	HORIZONTAL	FALSE	NONE	FALSE	NONE	GRAY (POWDER)

BEARINGS		GREASE	SHAFT TYPE	SPECIAL DE	SPECIAL ODE	SHAFT MATERIAL	FRAME MATERIAL
DE	ODE						
BALL	BALL	POLYREX EM	STANDARD 56	NONE	NONE	1144 STRESSPROOF (C-223)	ROLLED STEEL
6203	6203						

THERMO-PROTECTORS				THERMISTORS	CONTROL	SPACE HEATERS
THERMOSTATS	PROTECTORS	WDG RTDs	BRG RTDs			
NONE	NOT	NONE	NONE	NONE	FALSE	NONE VOLTS

*
N
O
T
E
S
*

INVERTER TORQUE: NONE
INV. HP SPEED RANGE: NONE
ENCODER: NONE NONE NONE NONE NONE PPR
BRAKE: NONE NONE NONE P/N NONE NONE NONE NONE FT-LB NONE V NONE Hz



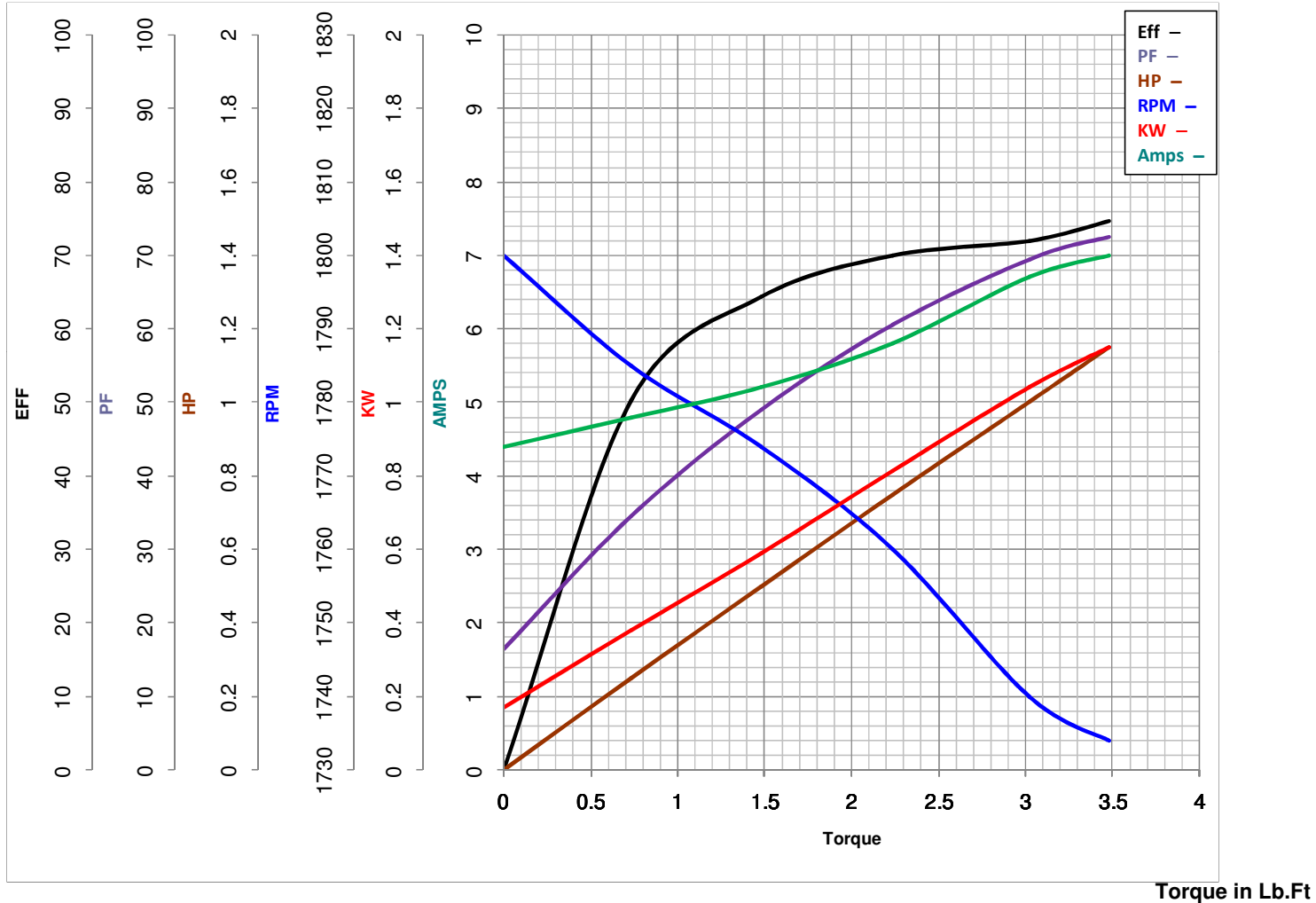
LEESON ELECTRIC CORPORATION
 TYPICAL PERFORMANCE CURVE for AC MOTOR

Model No LM24616

Curve at 230 Volts HP 1.00 PHASE 1
60 HZ
1 HP VOLTS 115/208-230

Catalog No LM24616D

HZ 60 RPM 1725



FL TORQUE	<u>3.019</u> Lb.Ft	FL AMPS	<u>13.4/6.8-6.7</u>
BD TORQUE	<u>7.6</u> Lb.Ft	PU TORQUE	<u>6.3</u> Lb.Ft
LR TORQUE	<u>8.906</u> Lb.Ft	LR AMPS	<u>34.7</u>
WINDING	ZC407-3	Date	3/27/2018