

PRODUCT INFORMATION PACKET



Model No: LM24714
Catalog No: LM24714

General Purpose Motor, 3 HP, 1 Ph, 60 Hz, 208-230 V, 3600 RPM, 145T Frame, TEFC



Regal and Leeson are trademarks of Regal Rexnord Corporation or one of its affiliated companies.
©2022 Regal Rexnord Corporation, All Rights Reserved. MC017097E



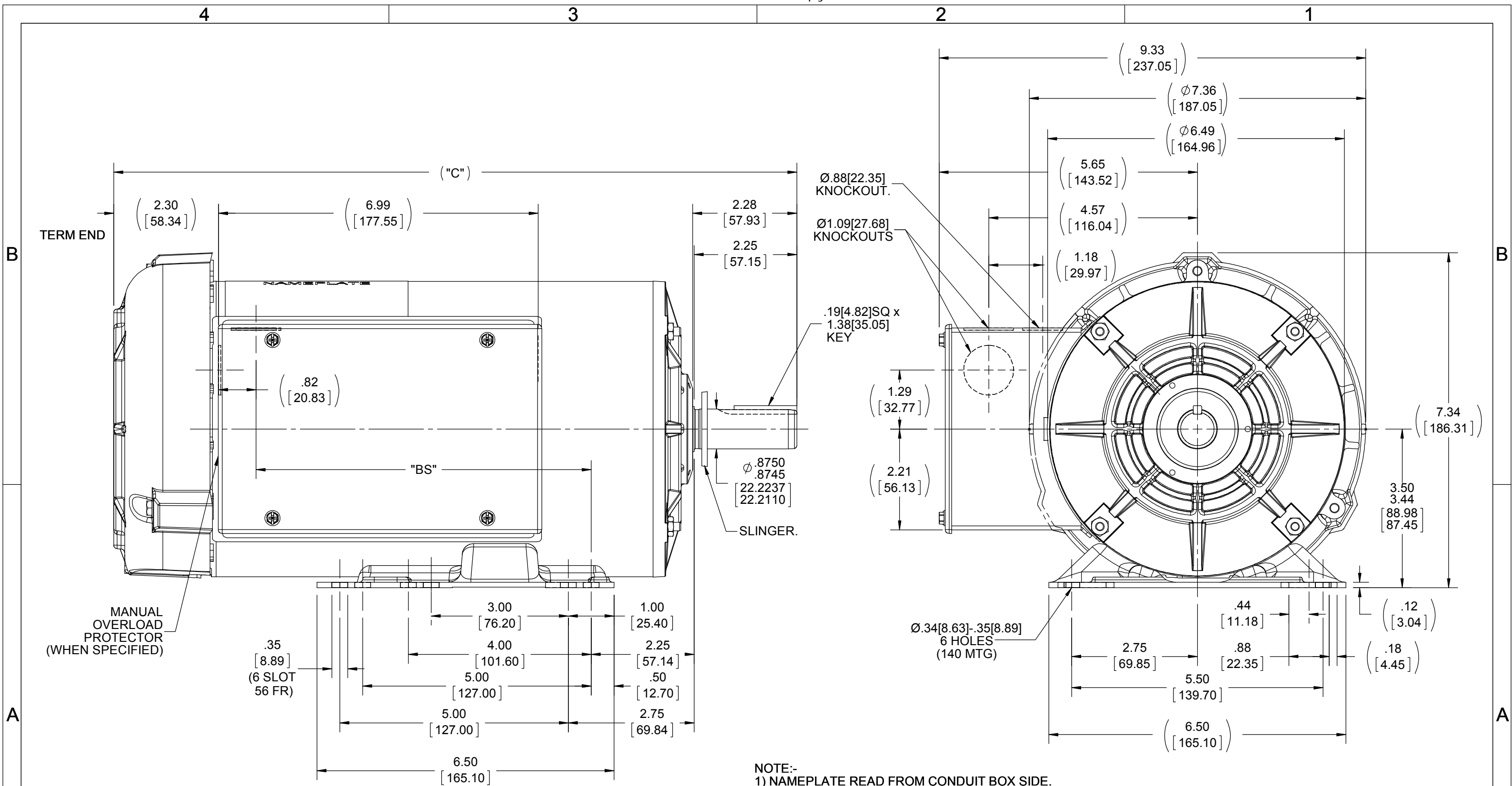


Nameplate Specifications

Output HP	3 Hp	Output KW	2.2 kW
Frequency	60 Hz	Voltage	208-230 V
Current	13.1-11.8 A	Speed	3510 rpm
Service Factor	1.15	Phase	1
Efficiency	84 %	Power Factor	99
Duty	Continuous	Insulation Class	B
Design Code	L	KVA Code	H
Frame	145T	Enclosure	Totally Enclosed Fan Cooled
Thermal Protection	No Protection	Ambient Temperature	40 °C
Drive End Bearing Size	205	Opp Drive End Bearing Size	203
UL	Recognized	CSA	Y
CE	N	IP Code	43
Number of Speeds	1		

Technical Specifications

Electrical Type	Capacitor Start Capacitor Run	Starting Method	Across The Line
Poles	2	Rotation	Selective Counterclockwise
Resistance Main	0 Ohms	Mounting	Rigid Base
Motor Orientation	Horizontal	Drive End Bearing	Ball
Opp Drive End Bearing	Ball	Frame Material	Rolled Steel
Shaft Type	T	Overall Length	14.87 in
Frame Length	9.56 in	Shaft Diameter	0.875 in
Shaft Extension	2.25 in	Assembly/Box Mounting	F1 ONLY
Outline Drawing	108701-956	Connection Drawing	102006-72-LN



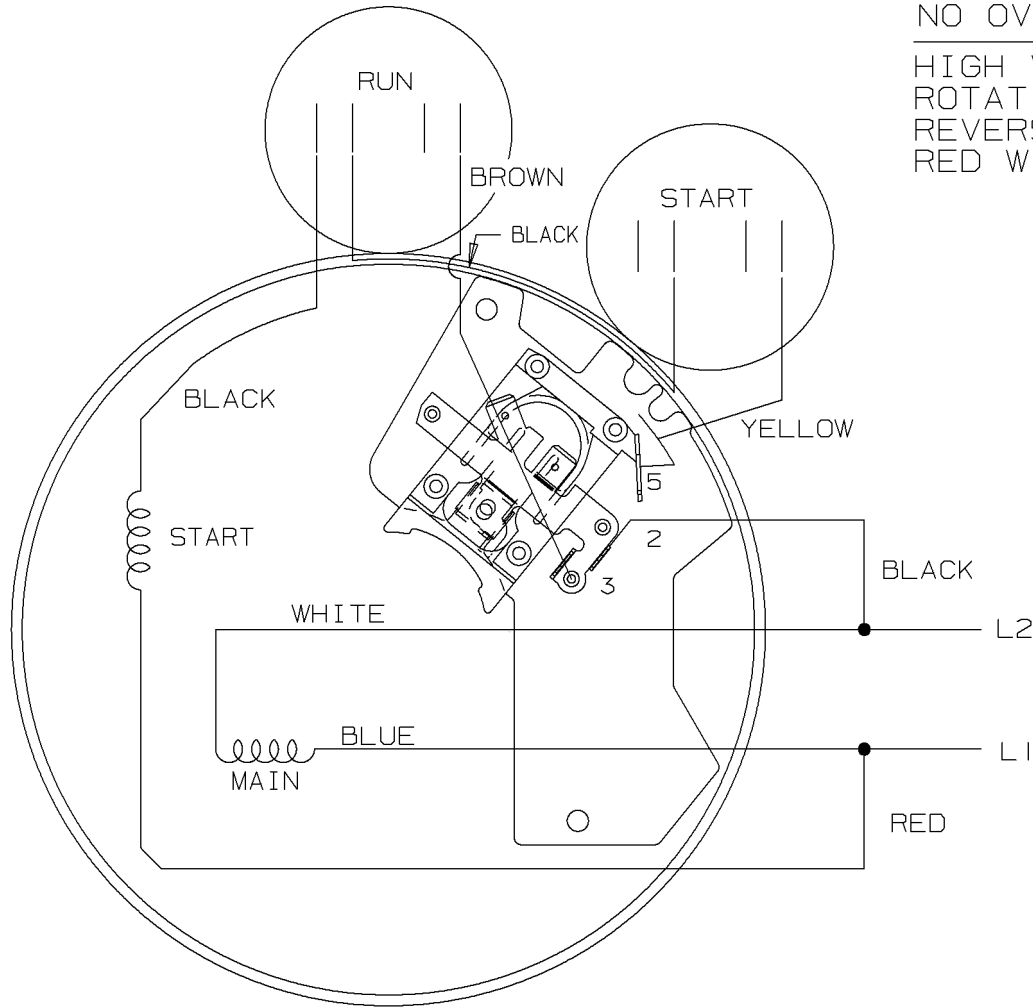
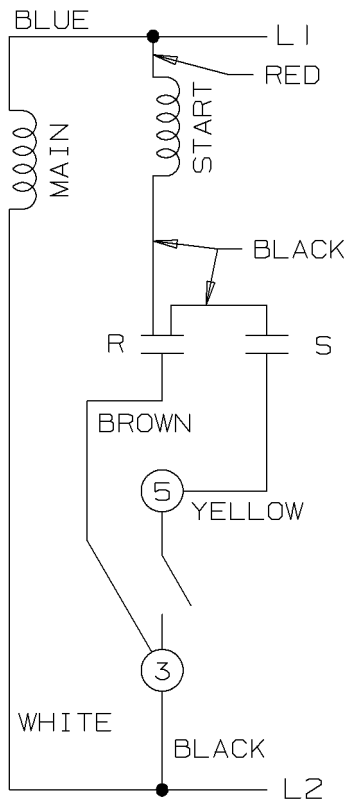
DASH	"C"	"BS"
956	14.94 [379.47]	7.33 [186.18]

DRAWING REVISION A	REVISION BY A.SUPPANAVAR	DATE 02/08/2019	TOLERANCES UNLESS OTHERWISE SPECIFIED: DEC. INCH mm ANGLE .X ±0.1 [±2.5] ±7° 30" .XX ±0.03 [±0.76] .XXX ±0.005 [±0.127] .XXXX ±0.0005 [±0.0127]	DRAWN BY A.SUPPANAVAR	Regal Beloit America, Inc.
ECO ECO-0162621	APPROVED BY	DATE	REMOVE BURRS & BREAK SHARP EDGES: .003/.015 [.076/.381] X 45° CORNER FILLETS: R.02 [.51] MACHINED SURFACES: 200 INCH/mm 5.1 mm SHOWN IN [BRACKETS]	DATE 02/08/2019	
ECO DESCRIPTION OUTLINE CONVERSION PROJECT COPYRIGHT REGAL BELOIT AMERICA, INC. ALL RIGHTS RESERVED. PROPRIETARY AND CONFIDENTIAL INFORMATION - THIS DOCUMENT IS THE PROPERTY OF REGAL BELOIT AMERICA, INC. ("OWNER") AND CONTAINS OWNER'S PROPRIETARY INFORMATION. ANY PERSON, CORPORATION OR OTHER FIRM RECEIVING IT IS DEEMED, BY RECEIVING IT, TO AGREE THAT IT, AND/OR ANY PART OF IT, SHALL NOT BE DISCLOSED TO ANY PERSON, CORPORATION OR OTHER ENTITY, DUPLICATED, AND/OR USED, EXCEPT AS EXPRESSLY APPROVED IN WRITING IN ADVANCE BY OWNER. THIS DOCUMENT SHALL BE RETURNED TO OWNER UPON REQUEST. IT MAY BE SUBJECT TO CERTAIN RESTRICTIONS UNDER APPLICABLE EXPORT CONTROL LAWS AND REGULATIONS.				APPROVED BY D SURYAWANSHI	DESCRIPTION OUTLINE 140 / 56 HZ.FR - TEFC 1 Φ - BB
				DATE 02/28/2019	MATERIAL
				REFERENCE 100116LN	PROCESS/FINISH
				THIRD ANGLE PROJECTION	SIZE B
					DRAWING NUMBER 108701
					SHEET 1 OF 1

HIGH VOLTAGE C.C.W.

HIGH VOLTAGE
CAPACITOR START-RUN
NO OVERLOAD SELECT ROT.

HIGH VOLTAGE C.C.W.
ROTATION SHOWN, TO
REVERSE, INTERCHANGE
RED WITH BLACK LEAD.



					✓ UNLESS OTHERWISE SPECIFIED DIMENSIONS ARE IN INCHES TOL. ON XX±.03 XXX±.005 XXXX±.0005 ANGLES± 7'30"		DRAWN BY TJB 12-08-1999
					MAX. SURFACE ROUGHNESS UNLESS OTHERWISE NOTED		CHKD BY ML 12-08-1999
					FINISH		APPD BY GK 12-08-1999
1	12-08-1999	NEW DRAWING	TJB	PART NAME CONNECTION DIAGRAM			DRWG NO A-102006-72-LN
REV	DATE	CHANGE	NAME				

PURCHASED

CADD FILE NO.

10200672-LN



CERTIFICATION DATA SHEET

**2100 WASHINGTON ST.
GRAFTON, WI
PH. 262-277-8810**

CONN. DIAGRAM: 102006-72-LN

CATALOG #: LM24714

OUTLINE: A-100116LN-956

WINDING #: ZB202 4 A

MOUNTING: F1 ONLY

TYPICAL MOTOR PERFORMANCE DATA

HP	kW	SYNC. RPM	F.L. RPM	FRAME	ENCLOSURE	KVA CODE	DESIGN
3	2.24	3600	3510	145T	TEFC	H	L

PH	Hz	VOLTS	AMPS	START TYPE	DUTY	INSL	S.F.	AMB°C
1	60	208-230	13.1-11.8	ACROSS THE LINE	CONTINUOUS	B3	1.15	40

FULL LOAD EFF:	84	3/4 LOAD EFF:	80.7	1/2 LOAD EFF:	-	GTD. EFF		ELEC. TYPE	
FULL LOAD PF:	99	3/4 LOAD PF:	99.9	1/2 LOAD PF:	-	81.5	CAP START CAP RUN		

F.L. TORQUE	LOCKED ROTOR AMPS	L.R. TORQUE	B.D. TORQUE	F.L. RISE°C
4.46 LB-FT	91	8.46 LB-FT 190 %	13.2 LB-FT 296 %	70

SOUND PRESSURE @ 3 FT.	SOUND POWER	ROTOR WK^2	MAX. WK^2	SAFE STALL TIME	STARTS / HOUR	APPROX. MOTOR WGT
0 dBA	10 dBA	0 LB-FT^2	0 LB-FT^2	0 SEC.	0	51 LBS.

***** SUPPLEMENTAL INFORMATION *****

DE BRACKET TYPE	ODE BRACKET TYPE	MOUNT TYPE	ORIENTATION	SEVERE DUTY	HAZARDOUS LOCATION	DRIP COVER	SCREENS	PAINT
STANDARD	STANDARD	RIGID	HORIZONTAL	FALSE	NONE	FALSE	NONE	GRAY (POWDER)

BEARINGS		GREASE	SHAFT TYPE	SPECIAL DE	SPECIAL ODE	SHAFT MATERIAL	FRAME MATERIAL
DE	ODE						
BALL	BALL	POLYREX EM	T	NONE	NONE	1144 STRESSPROOF (C-223)	ROLLED STEEL
205	203						

THERMO-PROTECTORS				THERMISTORS	CONTROL	SPACE HEATERS
THERMOSTATS	PROTECTORS	WDG RTDs	BRG RTDs			
NONE	NOT	NONE	NONE	NONE	FALSE	NONE VOLTS

*
N
O
T
E
S
*

INVERTER TORQUE: NONE
INV. HP SPEED RANGE: NONE
ENCODER: NONE NONE NONE NONE NONE PPR
BRAKE: NONE NONE NONE P/N NONE NONE NONE NONE FT-LB NONE V NONE Hz



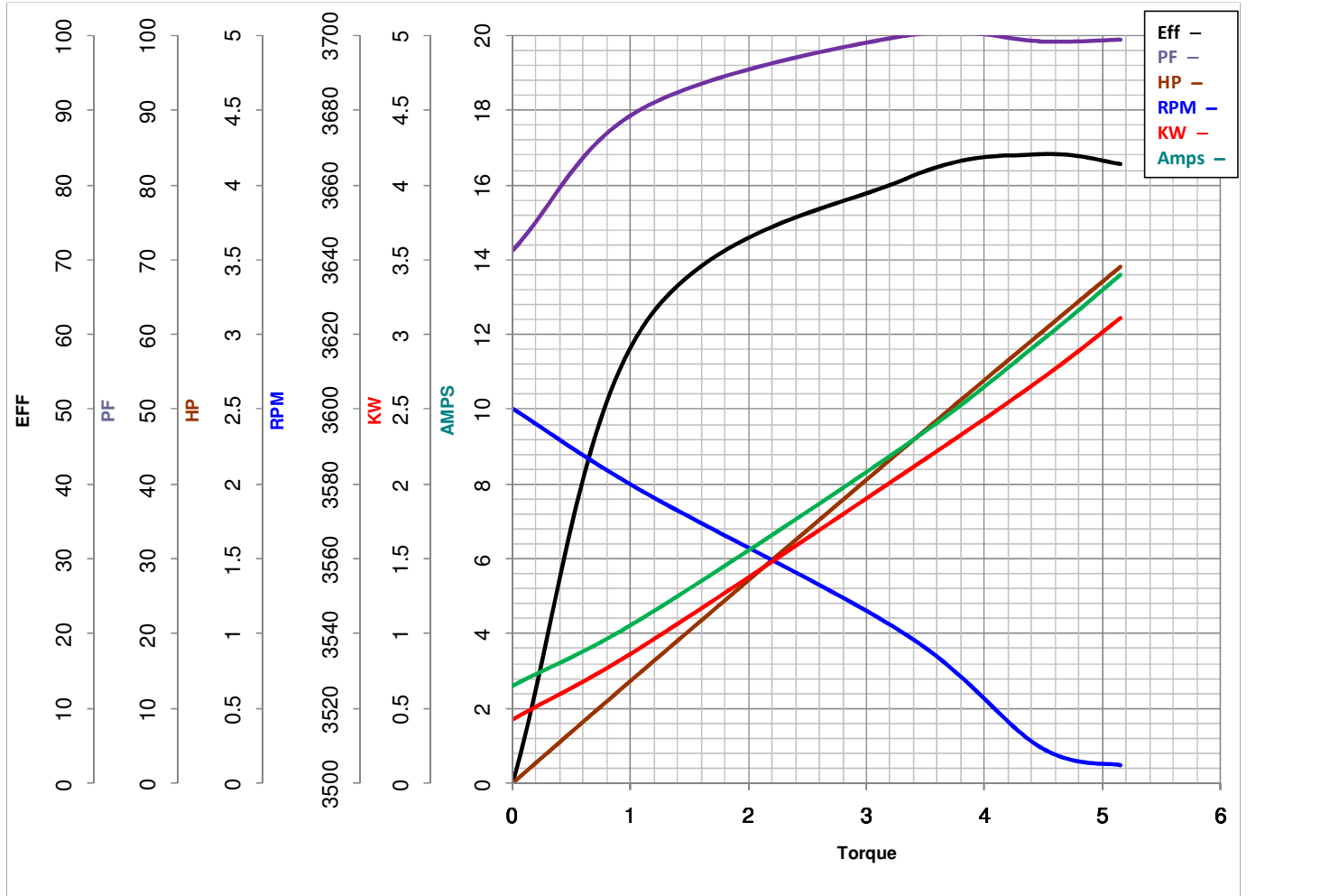
LEESON ELECTRIC CORPORATION
TYPICAL PERFORMANCE CURVE for AC MOTOR

Model No LM24714

Curve at 230 Volts HP 3.00 PHASE 1
60 HZ
3 HP VOLTS 208-230

Catalog No LM24714AD

HZ 60 RPM 3510



Torque in Lb.Ft

FL TORQUE 4.46 Lb.Ft
BD TORQUE 13.2 Lb.Ft
LR TORQUE 8.46 Lb.Ft

FL AMPS 13.1-11.8
PU TORQUE 6.8 Lb.Ft
LR AMPS 91

WINDING ZB202-4

Date 4/16/2018