

# PRODUCT INFORMATION PACKET



Model No: LM25962  
Catalog No: LM25962  
..2HP..1800RPM.145TC.TEFC.230/460V.3PH.60HZ.CONT.40C.1.0SF.RIGID-C.....NOT.....  
Speed Ratio Motors



Regal and Leeson are trademarks of Regal Rexnord Corporation or one of its affiliated companies.  
©2021 Regal Rexnord Corporation, All Rights Reserved. MC017097E



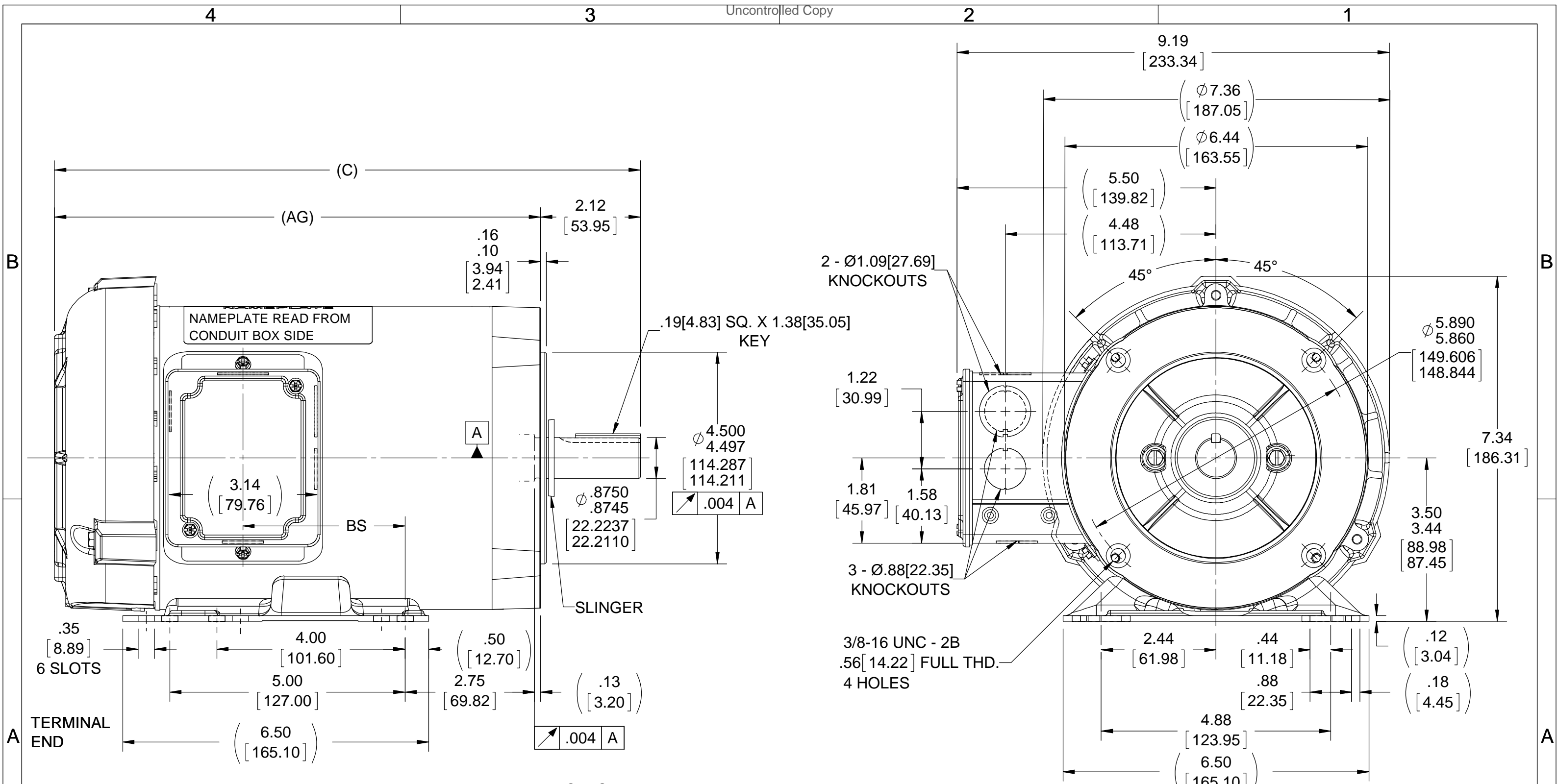


### Nameplate Specifications

Output HP	<b>2 Hp</b>	Output KW	<b>1.5 kW</b>
Frequency	<b>60 Hz</b>	Voltage	<b>230/460 V</b>
Current	<b>6.0/3.0 A</b>	Speed	<b>1750 rpm</b>
Service Factor	<b>1</b>	Phase	<b>3</b>
Efficiency	<b>85.5 %</b>	Power Factor	<b>71.8</b>
Duty	<b>Continuous</b>	Insulation Class	<b>F</b>
Design Code	<b>INV</b>	KVA Code	<b>N</b>
Frame	<b>145TC</b>	Enclosure	<b>Totally Enclosed Fan Cooled</b>
Thermal Protection	<b>Thermostats (N/C)</b>	Ambient Temperature	<b>40 °C</b>
Drive End Bearing Size	<b>205</b>	Opp Drive End Bearing Size	<b>203</b>
UL	<b>Recognized</b>	CSA	<b>Y</b>
CE	<b>N</b>	IP Code	<b>43</b>
Number of Speeds	<b>1</b>		

### Technical Specifications

Electrical Type	<b>Squirrel Cage Inverter Duty</b>	Starting Method	<b>Inverter Only</b>
Poles	<b>4</b>	Rotation	<b>Reversible</b>
Resistance Main	<b>6.5 Ohms</b>	Mounting	<b>Rigid Base</b>
Motor Orientation	<b>Horizontal</b>	Drive End Bearing	<b>Ball</b>
Opp Drive End Bearing	<b>Ball</b>	Frame Material	<b>Rolled Steel</b>
Shaft Type	<b>T</b>	Overall Length	<b>14.37 in</b>
Frame Length	<b>9.06 in</b>	Shaft Diameter	<b>0.875 in</b>
Shaft Extension	<b>2.25 in</b>	Assembly/Box Mounting	<b>F1 ONLY</b>
Outline Drawing	<b>100106LN-906</b>	Connection Drawing	<b>EE7308T-LN</b>



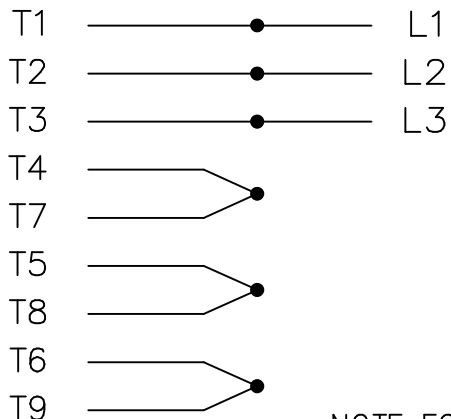
DASH	C	AG	BS	DASH	C	AG	BS
706	12.45 [316.23]	10.33 [262.38]	3.95 [100.33]	856	13.95 [354.33]	11.83 [300.48]	5.45 [138.43]
756	12.95 [328.93]	10.83 [275.08]	4.45 [113.03]	906	14.45 [367.03]	12.33 [313.18]	5.95 [151.13]
806	13.45 [341.63]	11.33 [287.78]	4.95 [125.73]	956	14.95 [379.73]	12.83 [325.88]	6.45 [163.83]

**NOTES:**  
1) CONDUIT BOX CAN BE ROTATED IN 180° STEPS.

DRAWING REVISION D	REVISION BY T AHER	DATE 02/07/2018	TOLERANCES UNLESS OTHERWISE SPECIFIED: DEC. INCH mm ANGLE .X ±0.1 [±2.5] ±7° 30" .XX ±0.03 [±0.76] .XXX ±0.005 [±0.127] .XXXX ±0.0005 [±0.0127]	DRAWN BY MSG	<b>REGAL</b> ™ Regal Beloit America, Inc.
ECO ECO-0143026	APPROVED BY PST	DATE 04/11/2018		DATE 11/01/2000	
ECO DESCRIPTION <b>OUTLINE CONVERSION PROJECT</b> COPYRIGHT REGAL BELOIT AMERICA, INC. ALL RIGHTS RESERVED. PROPRIETARY AND CONFIDENTIAL INFORMATION - THIS DOCUMENT IS THE PROPERTY OF REGAL BELOIT AMERICA, INC. ("OWNER") AND CONTAINS OWNER'S PROPRIETARY INFORMATION. ANY PERSON, CORPORATION OR OTHER FIRM RECEIVING IT IS DEEMED, BY RECEIVING IT, TO AGREE THAT IT, AND/OR ANY PART OF IT, SHALL NOT BE DISCLOSED TO ANY PERSON, CORPORATION OR OTHER ENTITY, DUPLICATED, AND/OR USED, EXCEPT AS EXPRESSLY APPROVED IN WRITING IN ADVANCE BY OWNER. THIS DOCUMENT SHALL BE RETURNED TO OWNER UPON REQUEST. IT MAY BE SUBJECT TO CERTAIN RESTRICTIONS UNDER APPLICABLE EXPORT CONTROL LAWS AND REGULATIONS.			REMOVE BURRS & BREAK SHARP EDGES: .003/.015 [0.076/.381] X 45° CORNER FILLETS: R.02 [0.51] MACHINED SURFACES: 200 INCH/mm 5.1 mm SHOWN IN [BRACKETS]	APPROVED BY GK	DESCRIPTION <b>OUTLINE</b> 140T FR. - TEFC - C' FACE
				DATE 11/01/2000	MATERIAL
				REFERENCE 100106LN	PROCESS/FINISH
				THIRD ANGLE PROJECTION	SIZE B
				DRAWING NUMBER 100106LN	SHEET 1 OF 1

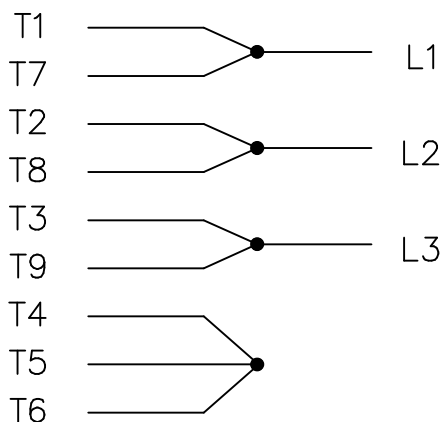
THREE PHASE  
DUAL VOLTAGE MOTOR

HIGH VOLTAGE

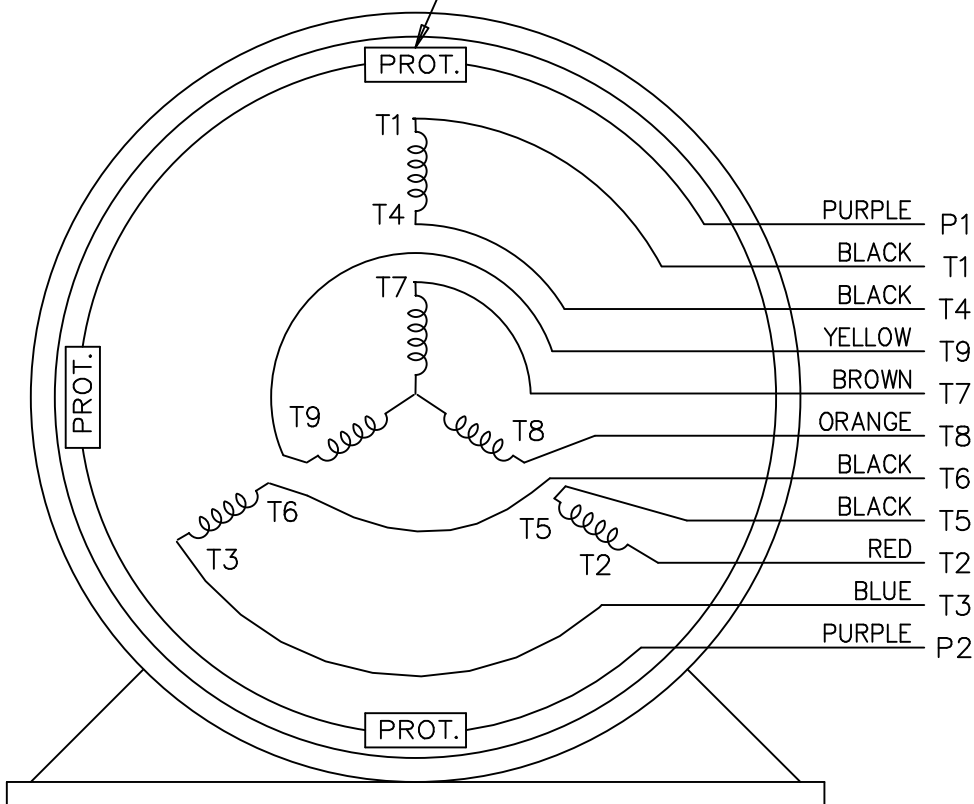


NOTE FOR FACTORY USE ONLY:  
TO SURGE TEST FOR COMMON CONNECT:  
HIGH VOLT: CONNECT P1 TO T1  
THEN P2 TO L1  
LOW VOLT: CONNECT P1 TO T1 & T7,  
THEN P2 TO L1


LOW VOLTAGE



THREMO-PROTECTORS  
CONNECTED IN SERIES.



VIEW OF TERMINAL END

				TOLERANCES UNLESS SPECIFIED			DRAWN BJK 07-16-2002	
				DEC.	INCHES		CHK DRS 07-18-2002	
				.X	±.1		APPD GK 07-18-2002	
				.XX	±.02	TITLE CONNECTION DIAGRAM 3 PHASE - DUAL VOLTAGE MOTOR	SCALE 1=1	
2	ADDED COLORS TO "T & P" LEADS	CN 40494	MSG 08-08-2006	ML	.XXX ±.005		MAT'L. FINISH	REF
1	NEW DRAWING		BJK 07-18-2002	DRS	.XXXX ±.0005	CAD FILE ee7308t_in DIST LB		FMF
NO.	REVISION		BY & DATE	CHK	ANG ±7'30"		SIZE A DRAWING NO. EE7308T-LN	PREV
THIS DRAWING IN DESIGN AND DETAIL IS OUR PROPERTY AND MUST NOT BE USED EXCEPT IN CONNECTION WITH OUR WORK ALL RIGHTS OF DESIGN AND INVENTION ARE RESERVED THIS IS AN ELECTRONICALLY GENERATED DOCUMENT - DO NOT SCALE THIS PRINT				RFP		DRAWING NO. EE7308T-LN		PAGE OF
								REV. 2

P.O. BOX 8003  
 WAUSAU, WI 54401-8003  
 PH. 715-675-3311



DATA VOLTS: 460

**CERTIFICATION DATA SHEET**

CONN. DIAGRAM: A-EE7308T-LN  
 OUTLINE: A-100106LN-906  
 WINDING: ZT497

CAT #: LM25962

R2 3

**TYPICAL MOTOR PERFORMANCE DATA**

HP	KW	SYNC RPM	FL RPM	FRAME	ENCLOSURE	TYPE	KVA CODE	DESIGN
2	1.5	1800	1750	145TC	TEFC	TFR	N	INC

PH	HZ	VOLTS	AMPS	START TYPE	DUTY	INSL	S.F.	AMB	ELEV.
3	60	230/460	6/3	INVERTER ONLY	CONT	F	1.15	40	3300

F.L. EFF	85.5	3/4 LD EFF	85.5	1/2 LD EFF	84.0	GTD EFF	82.5	ELECT. TYPE	SQ CAGE INV DUTY
F.L. PF	71.8	3/4 LD PF	64.0	1/2 LD PF	51.0				

F.L. TORQUE	LR AMPS @ 460 V	L.R. TORQUE	B.D. TORQUE	F.L. RISE (°C)
6.0 LB-FT	29.0	26.5 LB-FT 442%	30.5 LB-FT 508%	55

PRESSURE @ 3	POWER	ROTOR WK²	MAX. LOAD WK²	SAFE STALL TIME	STARTS/HOUR	MOTOR WGT
62 dBA	71 dBA	0.13 LB-FT²	0 LB-FT²	0 SEC.	0	52 LB.

\*\*\* SUPPLEMENTAL INFORMATION \*\*\*

DE BRACKET TYPE	ODE BRACKET TYPE	MOUNT TYPE	MOTOR ORIENTATION	SEVERE DUTY	HAZARDOUS LOCATION	DRIP COVER	SCREENS	PAINT
C-FACE	STANDARD	RIGID	HORIZONTAL	NO	NONE	NO	NONE	GRAY - LINCOLN

BEARINGS		GREASE	SHAFT TYPE	SPECIAL DE	SPECIAL ODE	SHAFT MATERIAL	FRAME MATERIAL
DE	ODE						
BALL	BALL	POLYREX EM	T	NONE	NONE	1144 STRESSPROOF (C-223)	ROLLED STEEL
205	203						

THERMOSTATS	PROTECTORS	WDG RTD's	BRG RTD's	THERMISTORS	CONTROL	SPACE HEATERS
TSTATS (N/C)	NOT	NONE	NONE	NONE	FALSE	NA

R1 (ohms/ph)	R2 (ohms/ph)	X1 (ohms/ph)	X2 (ohms/ph)	Xm (ohms/ph)	VIBRATION (in/sec)	FLOAT
4.004	2.868	5.765	5.609	156.2	0.080	ODE

* N O T E S *	INVERTER TORQUE: CONSTANT 4:1 INV. HP SPEED RANGE: NONE	
	ENCODER: NONE	
	NONE	
	NONE	
	NONE PPR	

DATE: 2/26/2018	BRAKE: NONE	
	NONE NONE NONE	
	FT-LB: NA	NONE
	VOLTAGE: NONE	HZ:
UL: V-OVER TEMP PROT 3, P1-P2		

Data Sheet

Date: 2/6/2018

LM25962



Data @ 460 V

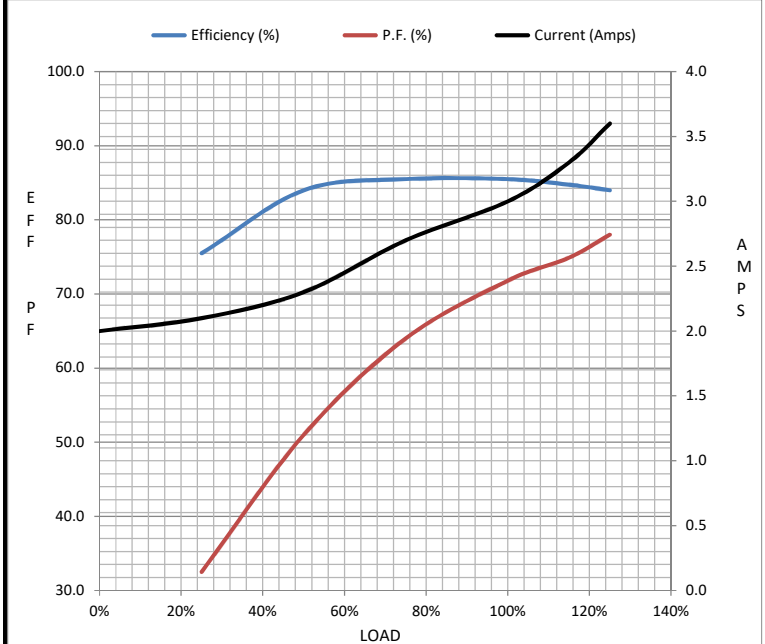
Motor Load Data

Load	0%	25%	50%	75%	100%	115%	125%	LR
Current (Amps)	2.00	2.10	2.30	2.70	3.0	3.3	3.6	29.0
Torque (ft-lb)	0.00	1.50	3.0	4.5	6.0	6.8	7.6	26.5
RPM	1800	1790	1775	1765	1750	1.746	1740	0
Efficiency (%)		75.5	84.0	85.5	85.5	84.8	84.0	
P.F. (%)	10.0	32.5	51.0	64.0	71.8	74.9	78.0	71.0

Motor Speed Data

	LR	Pull-Up	BD	Rated	Idle
Speed (RPM)	0	500	1235	1750	1800
Current (Amps)	29.0	25.0	20.0	3.0	2.00
Torque (ft-lb)	26.5	25.0	30.5	6.0	0.00

Information Block				
HP	2.0			
Sync. RPM	1800			
Frame	145			
Enclosure	TEFC			
Construction	TFR			
Voltage	230/460 V			
Frequency	60 Hz			
Design	A			
LR Code letter	N			
Service Factor	1.0			
Temp Rise @ FL	55 °C			
Duty	CONT			
Ambient	40 °C			
Elevation	1,000 feet			
Rotor/Shaft wk <sup>2</sup>	0.13 Lb-Ft <sup>2</sup>			
Ref Wdg	ZT497 R2			
Sound Pressure @ 1M	62 dBA			
VFD Rating	CONSTANT 4:1			
Outline Dwg	A-100106LN-906			
Conn. Diag	A-EE7308T-LN			
Additional Specifications:				
0				
0				
EQUIV CKT (OHMS / PHASE)				
R1	R2	X1	X2	Xm
4.0040	2.8680	5.7650	5.6090	156.2000



Speed - Torque Curve

