

PRODUCT INFORMATION PACKET



Model No: LM32731
Catalog No: LM32731
General Purpose Motor, 3 & 3 HP, 3 Ph, 60 & 50 Hz, 230/460 & 190/380 V, 3600 & 3000 RPM,
145T Frame, DP



Regal and LEESON are trademarks of Regal Rexnord Corporation or one of its affiliated companies.
©2025 Regal Rexnord Corporation, All Rights Reserved. MC017097E



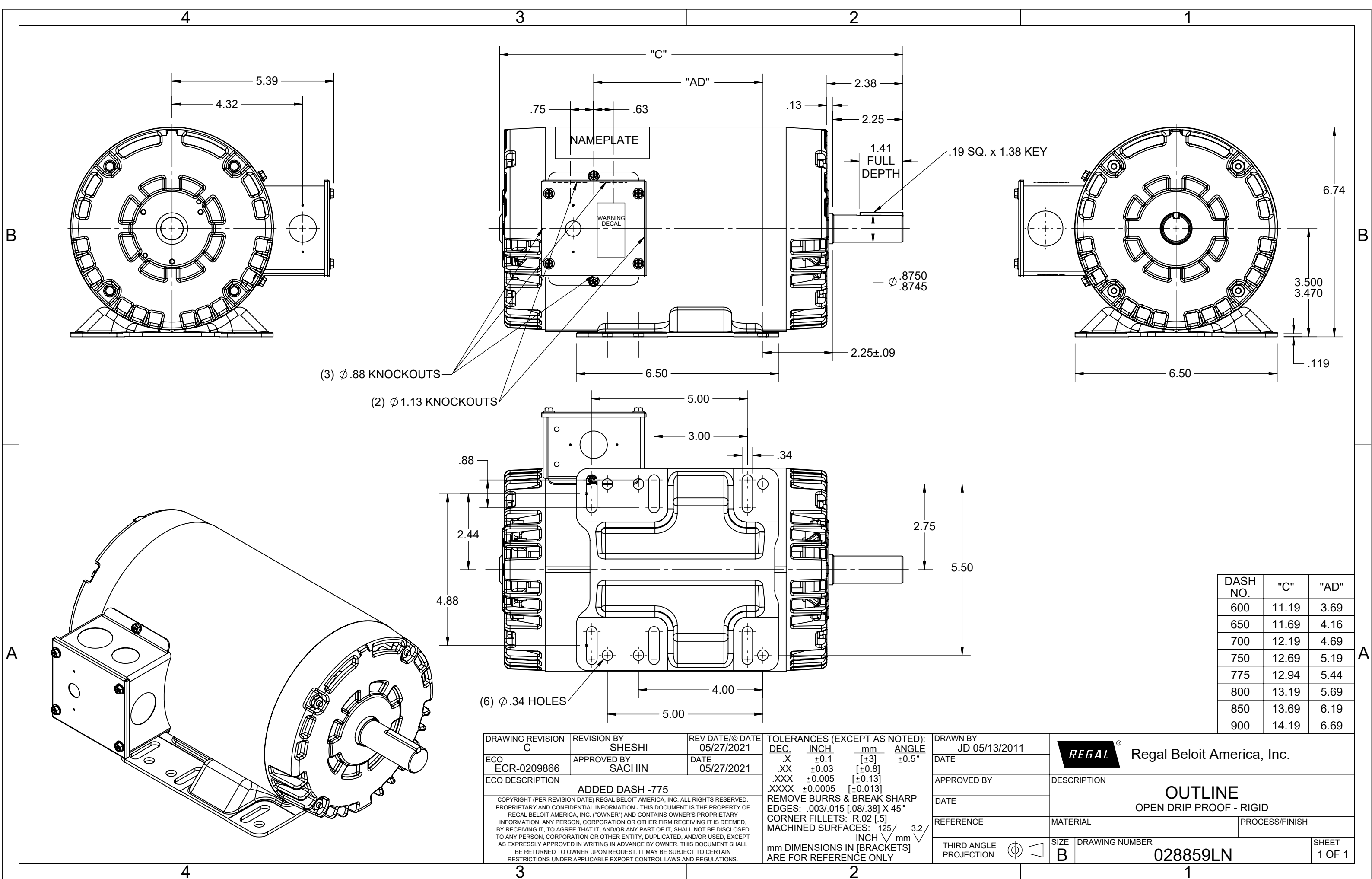


Nameplate Specifications

Phase	3	Output HP	3 & 3 Hp
Output KW	2.2 & 2.2 kW	Voltage	230/460 & 190/380 V
Speed	3490 & 2880 rpm	Service Factor	1.25 & 1.25
Frame	145T	Enclosure	Drip Proof
Thermal Protection	No Protection	Efficiency	86.5 & 89.5 %
Ambient Temperature	40 °C	Frequency	60 & 50 Hz
Current	7.2/3.6 & 8.8/4.4 A	Power Factor	88
Duty	Continuous	Insulation Class	F
Design Code	B	KVA Code	K
Drive End Bearing Size	6205	Opp Drive End Bearing Size	6203
UL	Recognized	CSA	Y
CE	Y	IP Code	22
Number of Speeds	1		

Technical Specifications

Electrical Type	Squirrel Cage Induction Run	Starting Method	Across The Line
Poles	2	Rotation	Reversible
Resistance Main	4.6 Ohms	Mounting	Rigid Base
Motor Orientation	Horizontal	Drive End Bearing	Ball
Opp Drive End Bearing	Ball	Frame Material	Rolled Steel
Shaft Type	T	Overall Length	12.70 in
Frame Length	7.75 in	Shaft Diameter	0.875 in
Shaft Extension	2.25 in	Assembly/Box Mounting	F1 ONLY
Connection Drawing	005010.20LN	Outline Drawing	028859LN-775



(3) ϕ .88 KNOCKOUTS

(2) ϕ 1.13 KNOCKOUTS

(6) ϕ .34 HOLES

DASH NO.	"C"	"AD"
600	11.19	3.69
650	11.69	4.16
700	12.19	4.69
750	12.69	5.19
775	12.94	5.44
800	13.19	5.69
850	13.69	6.19
900	14.19	6.69

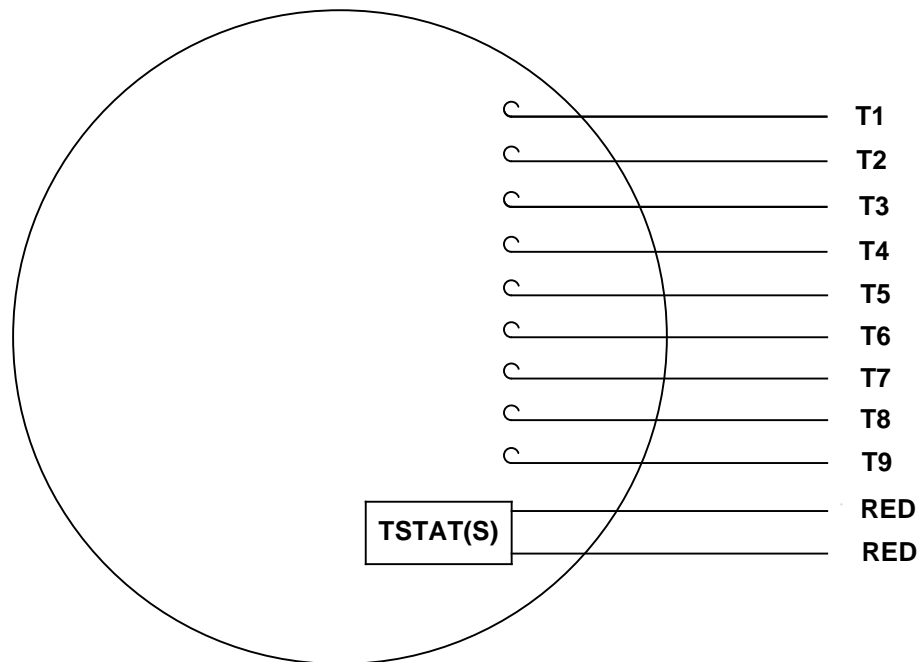
DRAWING REVISION C	REVISION BY SHESHI	REV DATE/© DATE 05/27/2021
ECO ECR-0209866	APPROVED BY SACHIN	DATE 05/27/2021
ECO DESCRIPTION ADDED DASH -775		
<small>COPYRIGHT (PER REVISION DATE) REGAL BELOIT AMERICA, INC. ALL RIGHTS RESERVED. PROPRIETARY AND CONFIDENTIAL INFORMATION - THIS DOCUMENT IS THE PROPERTY OF REGAL BELOIT AMERICA, INC. ("OWNER") AND CONTAINS OWNER'S PROPRIETARY INFORMATION. ANY PERSON, CORPORATION OR OTHER FIRM RECEIVING IT IS DEEMED, BY RECEIVING IT, TO AGREE THAT IT, AND/OR ANY PART OF IT, SHALL NOT BE DISCLOSED TO ANY PERSON, CORPORATION OR OTHER ENTITY, DUPLICATED, AND/OR USED, EXCEPT AS EXPRESSLY APPROVED IN WRITING IN ADVANCE BY OWNER. THIS DOCUMENT SHALL BE RETURNED TO OWNER UPON REQUEST. IT MAY BE SUBJECT TO CERTAIN RESTRICTIONS UNDER APPLICABLE EXPORT CONTROL LAWS AND REGULATIONS.</small>		

TOLERANCES (EXCEPT AS NOTED):			
DEC.	INCH	mm	ANGLE
.X	± 0.1	[± 3]	$\pm 0.5^\circ$
.XX	± 0.03	[± 0.8]	
.XXX	± 0.005	[± 0.13]	
.XXXX	± 0.0005	[± 0.013]	
REMOVE BURRS & BREAK SHARP EDGES: .003/.015 [.08/.38] X 45°			
CORNER FILLETS: R.02 [.5]			
MACHINED SURFACES: 125/ INCH \sqrt mm \sqrt 3.2			
mm DIMENSIONS IN [BRACKETS] ARE FOR REFERENCE ONLY			

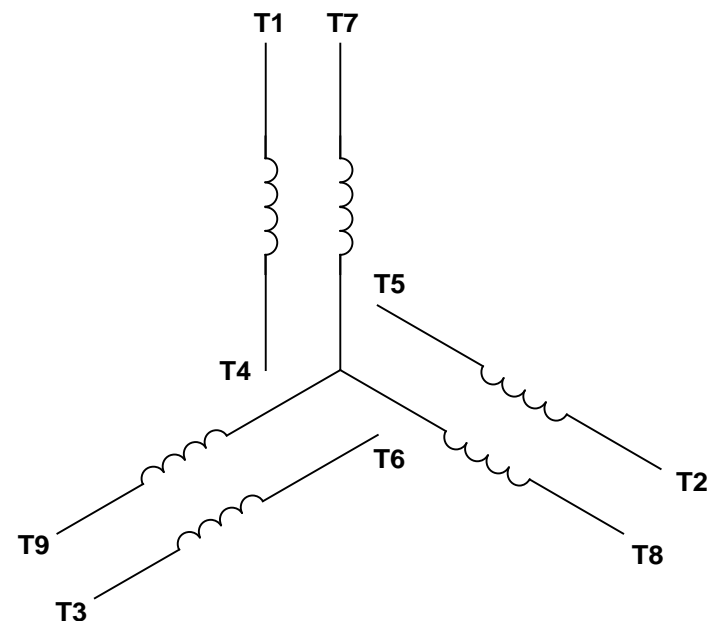
DRAWN BY JD 05/13/2011	DATE
APPROVED BY	DATE
REFERENCE	DATE
THIRD ANGLE PROJECTION	

REGAL Regal Beloit America, Inc.	
DESCRIPTION OUTLINE OPEN DRIP PROOF - RIGID	
MATERIAL	PROCESS/FINISH
SIZE B	DRAWING NUMBER 028859LN
	SHEET 1 OF 1

VIEW FROM OUTSIDE OF MOTOR AT SWITCH END.




LINE LEADS

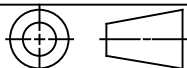


VOLTAGE	L1	L2	L3	JOIN & INSULATE
HIGH	T1	T2	T3	(T4, T7) (T5, T8) (T6, T9)
LOW	T1, T7	T2, T8	T3, T9	T4, T5, T6

RBC PROPRIETARY AND CONFIDENTIAL INFORMATION
 This document is the property of REGAL BELOIT CORPORATION ("RBC") including its subsidiaries and divisions and contains proprietary information of RBC. This document is loaned on the express condition that neither it nor the information contained therein shall be disclosed to others without the express written consent of RBC, and that the information shall be used by the recipient only as approved expressly by RBC. This document shall be returned to RBC upon its request. This document may be subject to certain restrictions under U.S. export control laws and regulations.

		TOLERANCES UNLESS SPECIFIED				DRAWN KK 3/17/2011			
		DEC	INCHES			CHK ST 3/17/2011			
		.X	±.1	TITLE EXTERNAL WIRING DIAGRAM 3 PHASE W/O PROTECTOR MAT'L DECAL - 004014 (TSTAT) - 080582		APPR			
		.XX	±.01			SCALE 1:1			
		.XXX	±.005			REF 005010-20			
		.XXXX	±.0005			FMF			
NO	REVISION	BY & DATE	CHK	ANG	±1/2°	FINISH STOCK	PAGE	OF	
			RFP		PREV	SIZE	DRAWING NO		
			NETWORK FILE NAME 00501020LN			A	005010-20LN		REV

THIRD ANGLE PROJECTION





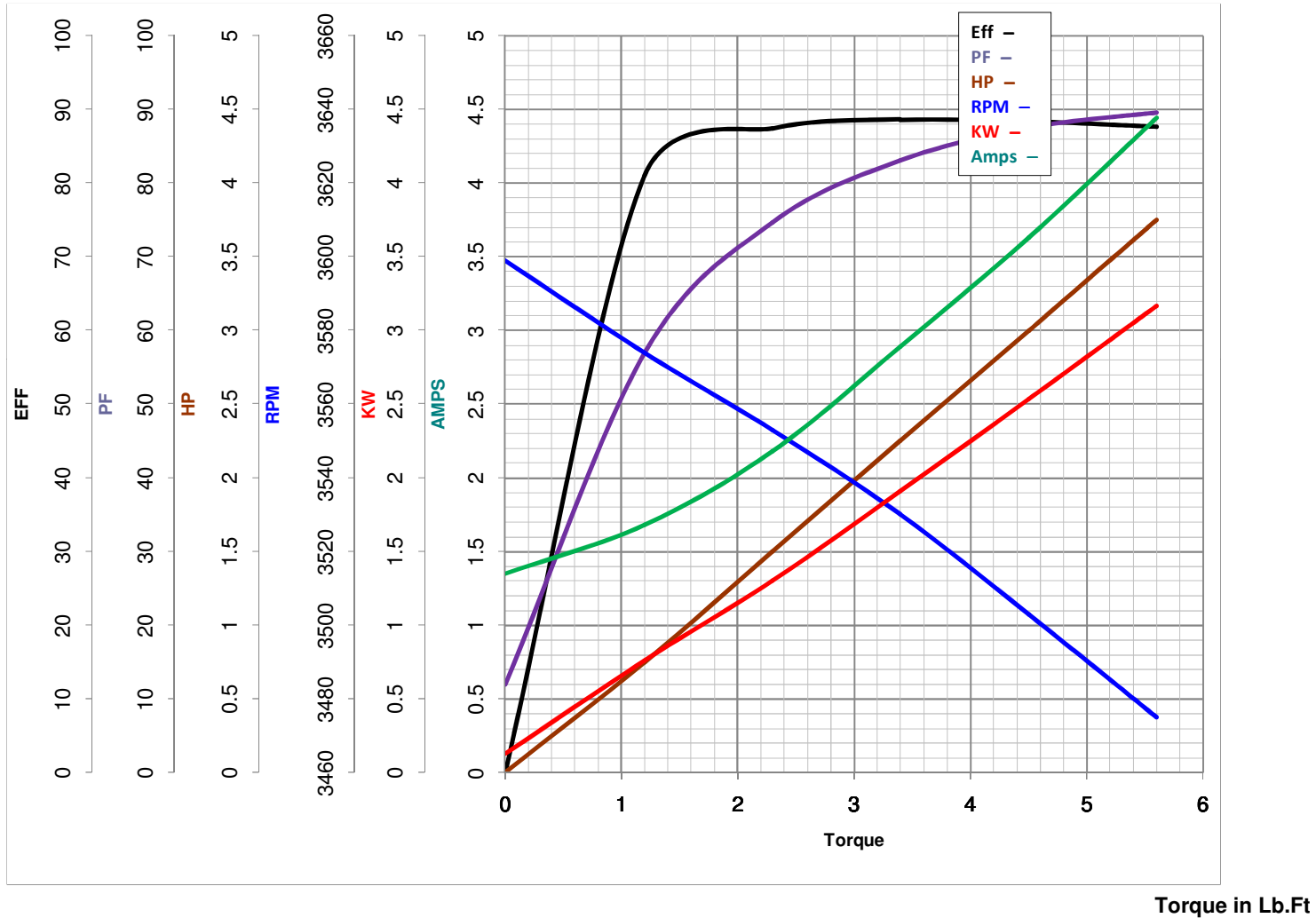
LEESON ELECTRIC CORPORATION
 TYPICAL PERFORMANCE CURVE for AC MOTOR

Model No LM32731

Curve at 460 Volts HP 3&3 PHASE 3
60 HZ
3 HP VOLTS 230/460&190/380

Catalog No LM32731A

HZ 60&50 RPM 3490&2880



FL TORQUE 4.5 Lb.Ft
 BD TORQUE 17.9 Lb.Ft
 LR TORQUE 15.2 Lb.Ft

FL AMPS 7.2/3.6
 PU TORQUE 14.3 Lb.Ft
 LR AMPS 30.9

WINDING T632175-3

Date 5/22/2018

EC Declaration of Conformity

The undersigned representing
the manufacturer:

Regal Beloit America
1946 West Cook Road
Fort Wayne, IN 46818

and the authorized representative
established within the Community:

Regal Beloit Italy
Via Modena, 18
24040 Ciserano(BG) - Italy

are committed to providing customers with products that comply with applicable regulations and international protocols to which they are subject, including the requirements of the European Parliament Directive on the Harmonization of the laws relating to electrical equipment designed for use within certain voltage limits (2014/35/EU).

Regal Beloit America declares that the following product(s), to which this declaration relates, are in conformity with the relevant sections of the EC standards listed below.

This statement supersedes any statements previously issued pertaining to the product(s) listed below and is subject to change without notice.

Model No : LM32731

(Model No. may contain prefix and/or suffix characters)

Catalog No : LM32731

Rework No : N/A

Directives :

Low Voltage Directive 2014/35/EU

Harmonized Standards Used :

EN 60034-1: 2010 (IEC 60034-1: 2010)

EN 60034-5: 2001/A1:2007 (IEC 60034-5: 2000/A1:2006)

Authorized Representative:



Zach Stauffer
Vice President, Engineering

Authorized Representative in the Community:



Stefano Casiraghi
Technology Director, Engineering

Created on 07/28/2025

CE 25