

PRODUCT INFORMATION PACKET



Model No: OAN1076V1
Catalog No: OAN1076V1

OEM Replacement Motor, 3/4 HP, 1 Ph, 60 Hz, 460/380-415 V, 1075/920 RPM, 1 Speed, 48 Frame,
SEMI ENCLOSED



Regal and Century are trademarks of Regal Rexnord Corporation or one of its affiliated companies.
©2022 Regal Rexnord Corporation, All Rights Reserved. MC017097E





Nameplate Specifications

| | | | |
|--------------------|-------------------|---------------------|----------------------|
| Output HP | 3/4 Hp | Output KW | 0.56 kW |
| Frequency | 60 Hz | Voltage | 460/380-415 V |
| Current | 2.8/1.8 A | Speed | 1075/920 rpm |
| Service Factor | 1 | Phase | 1 |
| Duty | Air Over | Insulation Class | B |
| Frame | 48Y | Enclosure | Semi Enclosed |
| Thermal Protection | Automatic | Ambient Temperature | 60 °C |
| UL | Recognized | CSA | Y |
| CE | N | Number of Speeds | 1 |

Technical Specifications

| | | | |
|-------------------|----------------------------------|-----------------------|----------------------------------|
| Electrical Type | Permanent Split Capacitor | Starting Method | Across The Line |
| Poles | 6 | Rotation | Counterclockwise Lead End |
| Mounting | Round Belly Band | Motor Orientation | Vertical Shaft Up |
| Drive End Bearing | Ball | Opp Drive End Bearing | Ball |
| Frame Material | Rolled Steel | Shaft Type | Flat |
| Overall Length | 10.24 in | Frame Length | 6.75 in |
| Shaft Diameter | 0.500 in | Shaft Extension | 2.9 in |
| Outline Drawing | OAN1076V1-S01 | Connection Drawing | 614131-004 |

This is an uncontrolled document once printed or downloaded and is subject to change without notice. Date Created:11/28/2022

GENERAL INFORMATION:

SHAFT RUNOUT: .001[.025] T.I.R. PER 1.00[25.40] LENGTH OF EXTENSION

BEARINGS: BALL

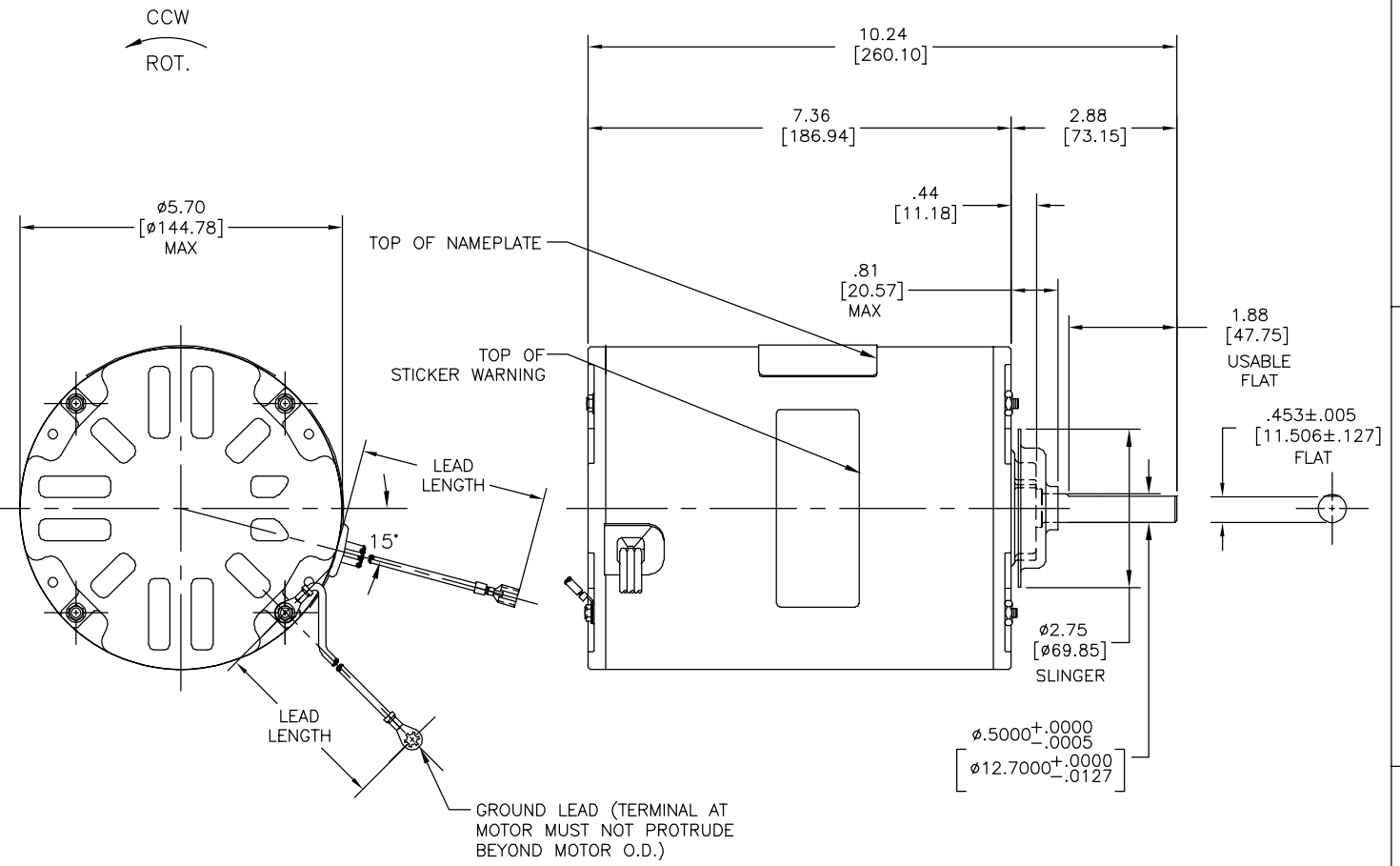
MOUNTING POSITION: VERTICAL SHAFT-UP

ELECTRICAL DATA:

OVERLOAD PROTECTOR: AUTOMATIC RESET (T.I. 7AM 036)

LEADS: NO. 16 GA., .06[1.52] THK., PVC 105°C INSUL.

GROUND LEAD: NO. 16 GA., .03[.76] THK., (GREEN) INSUL.



| NAMEPLATE DATA: | | EXTERNAL CONNECTION DIAGRAM | |
|----------------------|----------------------|-----------------------------|--|
| MODEL NO.: F48K04A01 | CUST. P/N: OAN1076V1 | | |
| HP: 3/4 | | | |
| ROT.: CCWLE | | | |
| RPM: 1075/920 | | | |
| TYPE: UF | | | |
| FRAME: 48Y | | | |
| VOLTS: 460/380-415 | | | |
| PH: 1 | | | |
| AMPS: 2.8/1.8 | | | |
| HZ: 60/50 | | | |
| INS.: B | | | |
| AMB.: 60° C | | | |
| DUTY: AIR OVER | | | |
| CAP.: 12.5 MFD/370V | | | |
| ENCL: SEMI-ENCL. | | | |
| UL LOGO | | | |
| CSA LOGO | | | |
| THERMALLY PROTECTED | | | |

614131-004

| COLOR | LENGTH | TERMINAL OR STRIP LENGTH |
|----------------|-------------------------------|--------------------------|
| GREEN (GROUND) | 9.0/10.0 [228.6/254.0] | #10 EYELET |
| BROWN | 96.0/100.0 [2438.4/2540.0] | .25[6.35] FEMALE SPADE |
| WHITE | 96.0/100.0 [2438.4/2540.0] | .25[6.35] FEMALE SPADE |
| BLACK | 96.0/100.0 [2438.4/2540.0] | .25[6.35] FEMALE SPADE |

REGAL-BELOIT CORPORATION (RBC) PROVIDES TECHNICAL ASSISTANCE TO OUR CUSTOMERS IN SEVERAL AREAS. SINCE RBC DOES NOT RECEIVE ALL DATA CONCERNING THE USE AND APPLICATION OF THE MOTOR, THE SUITABILITY OF THE MOTOR FOR THE APPLICATION MUST BE DETERMINED BY THE CUSTOMER.

DIMENSIONS WITHOUT TOLERANCES ARE FOR REFERENCE ONLY.

| | |
|------------------|----------|
| MAIN FRAME - OLE | ENCLOSED |
| END FRAME - OLE | ENCLOSED |
| MAIN FRAME - LE | ENCLOSED |
| END FRAME - LE | OPEN |

| PERFORMANCE CURVE NO. | TORQUE @ 1075 RPM (25°C) | APPROVED SAMPLE | UL COMPONENT | | CSA | |
|-----------------------|--------------------------|-----------------|--------------|-------|---------|---------|
| | | | FILE # | CCN # | FILE # | CLASS # |
| C31558 | 82.0 OZ. FT. | 98AC005A | E46412 | PRGY2 | LR43341 | 260-ø-0 |

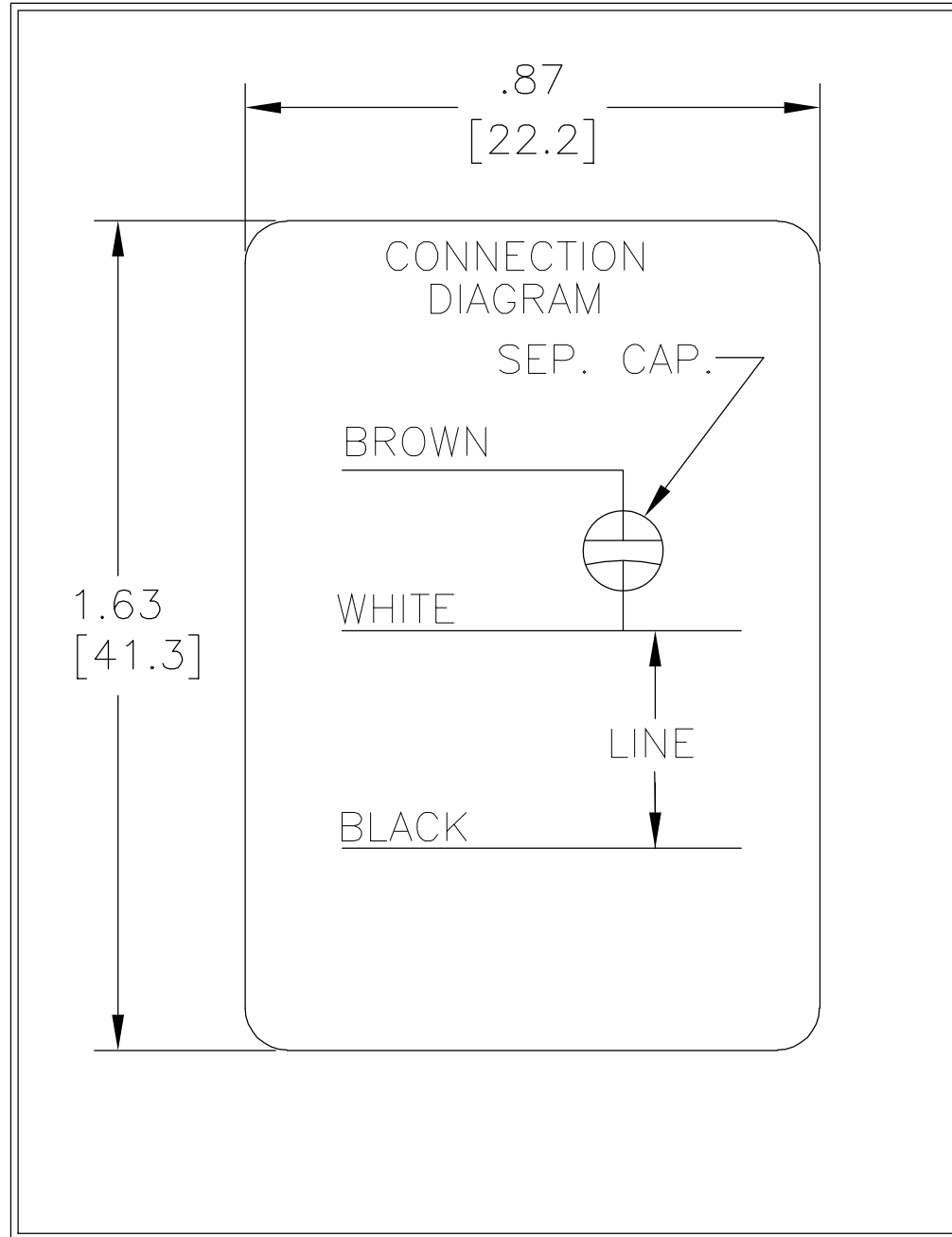
| DRAWING REVISION | REVISION BY | DATE |
|------------------|------------------|-----------------|
| A | N.HONG | 07-14-2014 |
| ECO-0053908 | APPROVED BY M.HE | DATE 07-14-2014 |

ECO DESCRIPTION

COPYRIGHT REGAL-BELOIT AMERICA, INC. ALL RIGHTS RESERVED. PROPRIETARY AND CONFIDENTIAL INFORMATION - THIS DOCUMENT IS THE PROPERTY OF REGAL-BELOIT AMERICA, INC. (OWNER) AND CONTAINS OWNER'S PROPRIETARY INFORMATION. ANY PERSON, CORPORATION OR OTHER ENTITY RECEIVING IT IS DEEMED BY RECEIVING IT, TO AGREE THAT IT, AND/OR ANY PART OF IT, SHALL NOT BE DISCLOSED TO ANY PERSON, CORPORATION OR OTHER ENTITY, DUPLICATED, AND/OR USED, EXCEPT AS EXPRESSLY APPROVED IN WRITING IN ADVANCE BY OWNER. THIS DOCUMENT SHALL BE RETURNED TO OWNER UPON REQUEST. IT MAY BE SUBJECT TO CERTAIN RESTRICTIONS UNDER APPLICABLE EXPORT CONTROL LAWS AND REGULATIONS.

| | | |
|------------------------|-------------------------|----------------------------|
| DRAWN BY: N.HONG | DATE: 07-14-2014 | Regal Beloit America, Inc. |
| APPROVED BY: M.HE | DATE: 07-14-2014 | |
| DESCRIPTION | MODEL-RFHP-48FR OUTLINE | |
| REFERENCE | MATERIAL | PROCESS/FINISH |
| THIRD ANGLE PROJECTION | SIZE DWG NO: OAN1076V1 | SHEET 1 |

| REV | ECO | REV BY | DATE | APPD | DATE |
|-----|---------|----------------|------------|------------|------------|
| A | 0017050 | VICTOR MIJARES | 03-01-2011 | CCONTRERAS | 03-01-2011 |



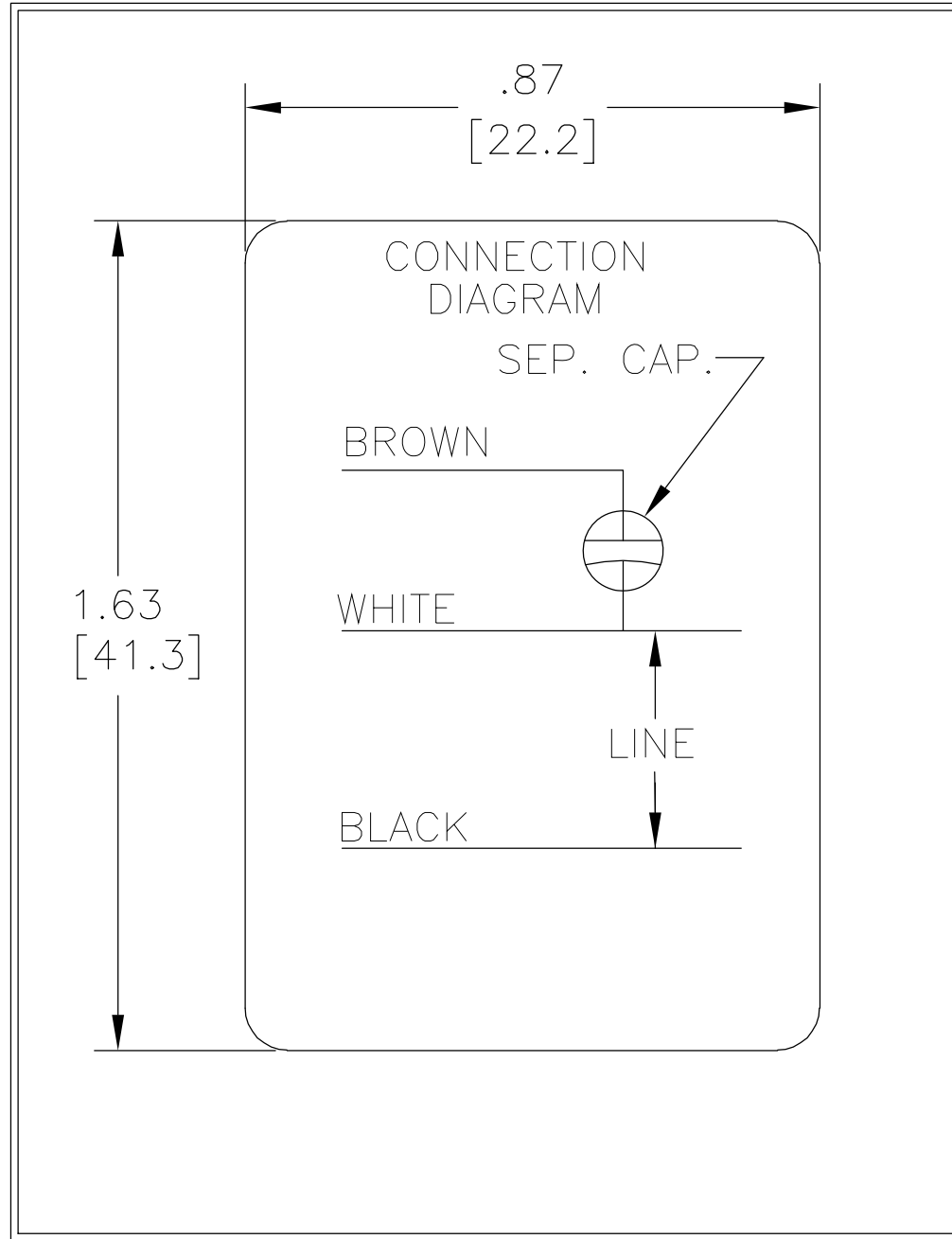
GEOMETRIC CHARACTERISTICS & SYMBOLS
 ▭ FLATNESS
 — STRAIGHTNESS
 < ANGLARITY
 ⊥ PERPENDICULARITY (SQUARENESS)
 // PARALLELISM
 ○ ROUNDNESS (CIRCULARITY)
 ∅ CYLINDRICITY
 △ PROFILE OF ANY SURFACE
 ∩ PROFILE OF ANY LINE
 ↑ RUNOUT
 ⊕ TRUE POSITION
 ◎ CONCENTRICITY
 ≡ SYMMETRY

UNLESS OTHERWISE SPECIFIED
 DIM. TOLERANCES ARE AS FOLLOWS:
 INCH X XX XXX XXXX
 ±.1 ±.02 ±.005 ±.0005
 mm ±0.5 ±0.13 ±0.013
 ANG. ±.50 DEG
 REMOVE BURRS & BREAK SHARP EDGES:
 INCH .003-.015 mm 0.1-0.4
 CORNER FILLETS TO:
 INCH .020 mm 0.5
 MACHINE SURFACES:
 INCH 125 mm 3.2
 METRIC DIMS. SHOWN IN [BRACKETS]

DR BY: N.LONG 07/14/1986
 APPD:
 THIRD ANGLE PROJECTION EDS DATE 02-22-2008
 FORMAT REV F
 CONFIDENTIAL: THIS DRAWING AND ITS INFORMATION ARE THE EXCLUSIVE AND CONFIDENTIAL PROPERTY OF A.O. SMITH CORP. AND ARE NOT TO BE DISCLOSED, DUPLICATED, DISTRIBUTED OR OTHERWISE USED WITHOUT THE WRITTEN CONSENT OF A.O. SMITH CORP.
 -ALL RIGHTS RESERVED. ASME Y14.5M 1994

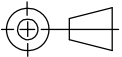
| | | | |
|---|----------------------|---|------------|
| AC Smith Innovation has a name. | | ELECTRICAL PRODUCTS COMPANY A DIVISION OF A. O. SMITH CORPORATION | |
| DESCRIPTION CONN DIAGRAM-NAMEPLATE | | | |
| SIZE A | DWG NO 614131-004 | | |
| SCALE NONE | | | SHEET 1 |


| | | | | | |
|-----------|---------|----------------|------------|---------------|------------|
| REVISION: | ECO | REVISADO POR: | FECHA: | APROBADO POR: | FECHA: |
| A | 0017050 | VICTOR MIJARES | 03-01-2011 | CCONTRERAS | 03-01-2011 |



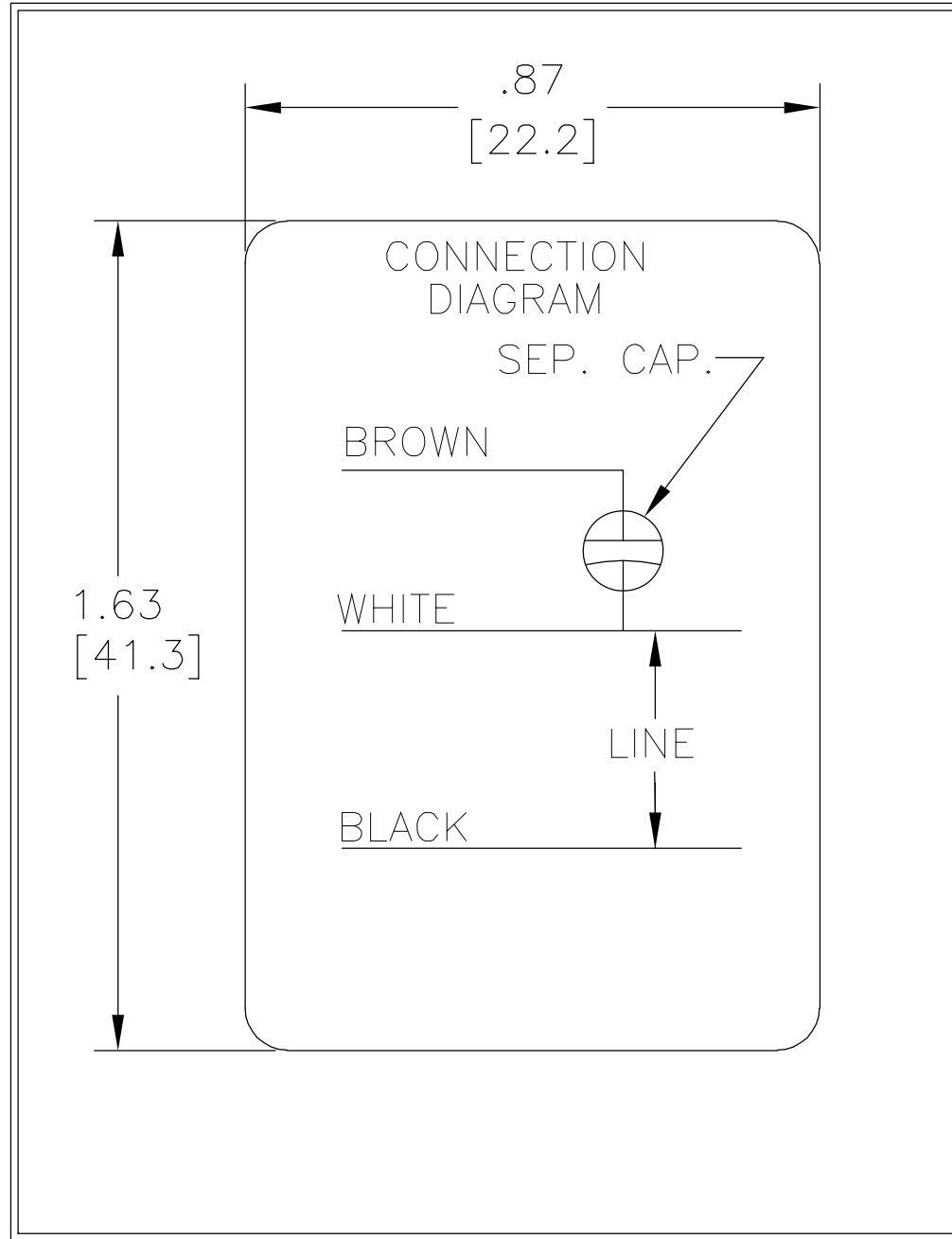
CARACTERISTICAS DE GEOMETRIA Y SIMBOLOS
 ▯ PLANICIDAD
 — RECTITUD
 < ANGULARIDAD
 ⊥ PERPENDICULARIDAD (A ESCUADRA)
 // PARALELISMO
 ○ REDONDEZ (CIRCULARIDAD)
 ∅ CILINDRICIDAD
 △ PERFIL DE CUALQUIER SUPERFICIE
 ∩ PERFIL DE CUALQUIER LINEA
 ↑ VARIACION
 ⊕ POSICION REAL
 ⊙ CONCENTRICIDAD
 ≡ SIMETRIA

A MENOS QUE SE ESPECIFIQUE DE OTRA MANERA, LAS TOLERANCIAS DE LAS DIMS; SON LAS SIGUIENTES:
 X XX XXX XXXX
 PULG ±.1 ±.02 ±.005 ±.0005
 mm ±0.5 ±0.13 ±0.013
 ANG. ±.50 GRADOS
 ELIMINAR REBABAS Y ORILLAS FILOSAS DEL BORDE.
 PULG .003-.015 mm 0.1-0.4
 FILETEAR ESQUINA: PULG .020 mm 0.5
 MAQUINAR SUPERFICIES
 PULG 125 mm 3.2
 DIMS METRICAS MOSTRADAS [PARENTESIS]

DIBUJADO POR: N.LONG 07/14/1986
 APROBADO POR:
 TERCER ANGULO DE PROYECCION  FECHA EDS: 02-22-2008
 REV. FORMATO: F
 CONFIDENCIAL: ESTE DIBUJO Y SU INFORMACION SON PROPIEDAD DE USO EXCLUSIVO Y CONFIDENCIAL DE A.O.SMITH CORP. Y NO DEBERAN SER REVELADOS, DUPLICADOS, DISTRIBUIDOS O USARSE DE OTRA MANERA SIN EL CONSENTIMIENTO ESCRITO DE A.O. SMITH CORP.
 -TODOS LOS DERECHOS RESERVADOS.ASME Y14.5M 1994

| | |
|--|------------------------------|
|  ELECTRICAL PRODUCTS COMPANY <small>A DIVISION OF A. O. SMITH CORPORATION</small> | |
| DESCRIPCION: CONN DIAGRAM-NAMEPLATE | |
| TAMAÑO: A | NUMERO DE DIBUJO: 614131-004 |
| ESCALA:NONE | HOJA: 1 |

| | | | | | |
|----|---------|----------------|------------|------------|------------|
| 版本 | ECO | 编制 | 日期 | 批准 | 日期 |
| A | 0017050 | VICTOR MIJARES | 03-01-2011 | CCONTRERAS | 03-01-2011 |



- 形位公差
- 平面度
- 直线度
- ∠ 倾斜度
- ⊥ 垂直度
- // 平行度
- 圆度
- ⊘ 圆柱度
- ⌒ 面轮廓度
- ⌒ 线轮廓度
- ↗ 圆跳动
- ⊕ 位置度
- ◎ 同轴度
- ≡ 对称度

除另有注明
尺寸公差如下:

| | | | | |
|----|------|-------|--------|--------|
| 英寸 | ±.1 | ±.02 | ±.005 | ±.0005 |
| 毫米 | ±0.5 | ±0.13 | ±0.013 | |

角度 ±.50 度
清理毛刺和尖棱
英寸 .003-.015 毫米 0.1-0.4
内圆角
英寸 .020 毫米 0.5
表面粗糙度
英制 125 米制 3.2

米制尺寸显示在 []

| | | |
|---|--------|---------------------------------|
| 绘图: | N.LONG | 07/14/1986 |
| 批准: | | |
| 第三角投影 | | 图纸格式发布日期 02-22-2008 图纸格式版本 F |
| 机密: 本图纸及相关信息所有权归A. O. SMITH公司所有。 未经A. O. SMITH公司书面授权, 不得泄露、复制、传播或作 其他用途。—版权所有 | | |
| ASME Y14.5M 1994 | | |

| | | | |
|------------------------------|------------------|--|---------|
| | | ELECTRICAL PRODUCTS COMPANY <small>A DIVISION OF A. O. SMITH CORPORATION</small> | |
| 名称 CONN DIAGRAM-NAMEPLATE | | | |
| 图幅 A | 图号 614131-004 | | |
| 比例 NONE | | | 页号 1 |