

PRODUCT INFORMATION PACKET



Model No: OBG2004
Catalog No: OBG2004
Circulator Pump Motor, 1/8 HP, 1 Ph, 60 Hz, 115 V, 1800 RPM, 48Y Frame, OPEN



Regal and Century are trademarks of Regal Rexnord Corporation or one of its affiliated companies.
©2025 Regal Rexnord Corporation, All Rights Reserved. MC017097E





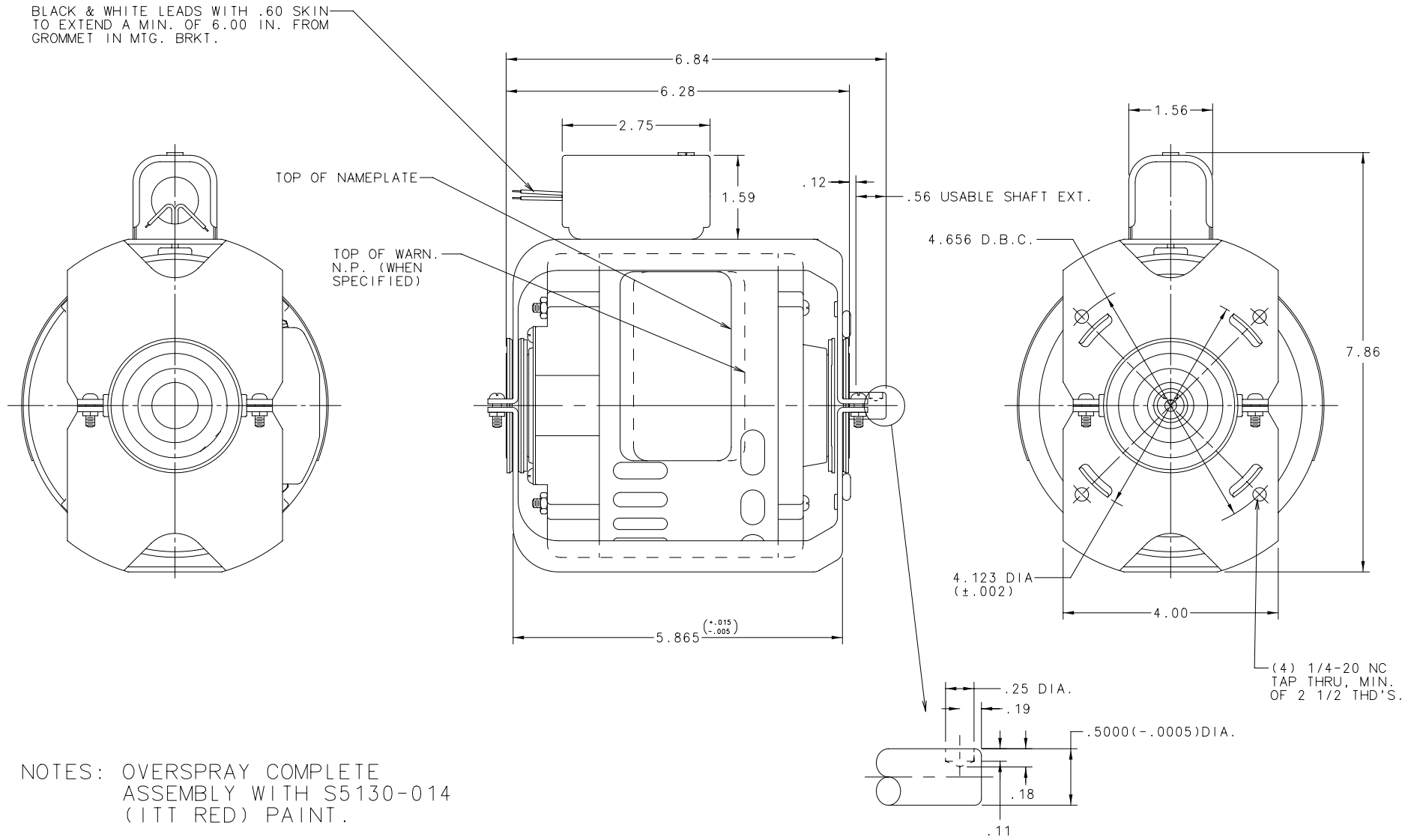
Nameplate Specifications

Phase	1	Output HP	1/8 Hp
Output KW	0.10 kW	Voltage	115 V
Speed	1725 rpm	Service Factor	1.0
Frame	48Y	Enclosure	Open Enclosed
Thermal Protection	Automatic	Ambient Temperature	40 °C
Frequency	60 Hz	Current	3.1 A
Duty	Continuous	Insulation Class	A
UL	No	CSA	Y
CE	N	Number of Speeds	1

Technical Specifications

Electrical Type	Split Phase	Starting Method	Across The Line
Poles	4	Rotation	Reversible
Mounting	Resilient Base	Drive End Bearing	Sleeve
Opp Drive End Bearing	Sleeve	Frame Material	Rolled Steel
Shaft Type	Spot Drill	Overall Length	6.84 in
Frame Length	3.44 in	Shaft Diameter	0.500 in
Shaft Extension	0.68 in		
Connection Drawing	621417-024	Outline Drawing	12449-001

This is an uncontrolled document once printed or downloaded and is subject to change without notice. Date Created:12/10/2025



NOTES: OVERSPRAY COMPLETE ASSEMBLY WITH S5130-014 (ITT RED) PAINT.

DATE	CHANGED FROM	APPROVED ENG DRG	NOTICE	DATE	CHANGED FROM	APPROVED ENG DRG	NOTICE

GEOMETRIC CHARACTERISTICS & SYMBOLS □ FLATNESS — STRAIGHTNESS ∠ ANGULARITY ⊥ PERPENDICULARITY (SQUARENESS) // PARALLELISM ○ ROUNDNESS (CIRCULARITY) ⌀ CYLINDRICITY ▽ PROFILE OF ANY SURFACE ▽ PROFILE OF ANY LINE ⊕ RUNOUT ⊕ TRUE POSITION ⊙ CONCENTRICITY — SYMMETRY	UNLESS OTHERWISE SPECIFIED DIMENSION TOLERANCES ARE AS FOLLOWS .X .2X .XXX INCHES ±.5 ±.02 ±.005 METRIC ±.5 ±.13 ANGLES ±.50 DEG REMOVE BURRS AND BREAK SHARP EDGES .003-.015, CORNER FILLETS TO .020 MACHINE SURFACES: 125✓ CONFIDENTIAL: THIS DRAWING AND ITS INFORMATION ARE THE EXCLUSIVE AND CONFIDENTIAL PROPERTY OF A.O. SMITH CORP. AND ARE NOT TO BE DISCLOSED, DUPLICATED, DISTRIBUTED OR OTHERWISE USED WITHOUT THE WRITTEN CONSENT OF A.O. SMITH CORP. - ALL RIGHTS RESERVED	MATERIAL - PROCESS -	DRAWN J. BLANKENSHIP 04/09/03 APPROVED J. CLUSTER 04/16/03 REFERENCE 1022B05 APPLICATION - USER/FILE FR48/MOTOUT	A.O. SMITH ELECTRICAL PRODUCTS COMPANY TIPP CITY, OHIO A DIVISION OF A.O. SMITH CORPORATION COPYRIGHT 1995 DESCRIPTION SD48FR OUTLINE SIZE C PART NUMBER 12449-001 SCALE NONE NOTICE 0342037 SHEET 1
---	--	-------------------------------	---	---

4

3

2

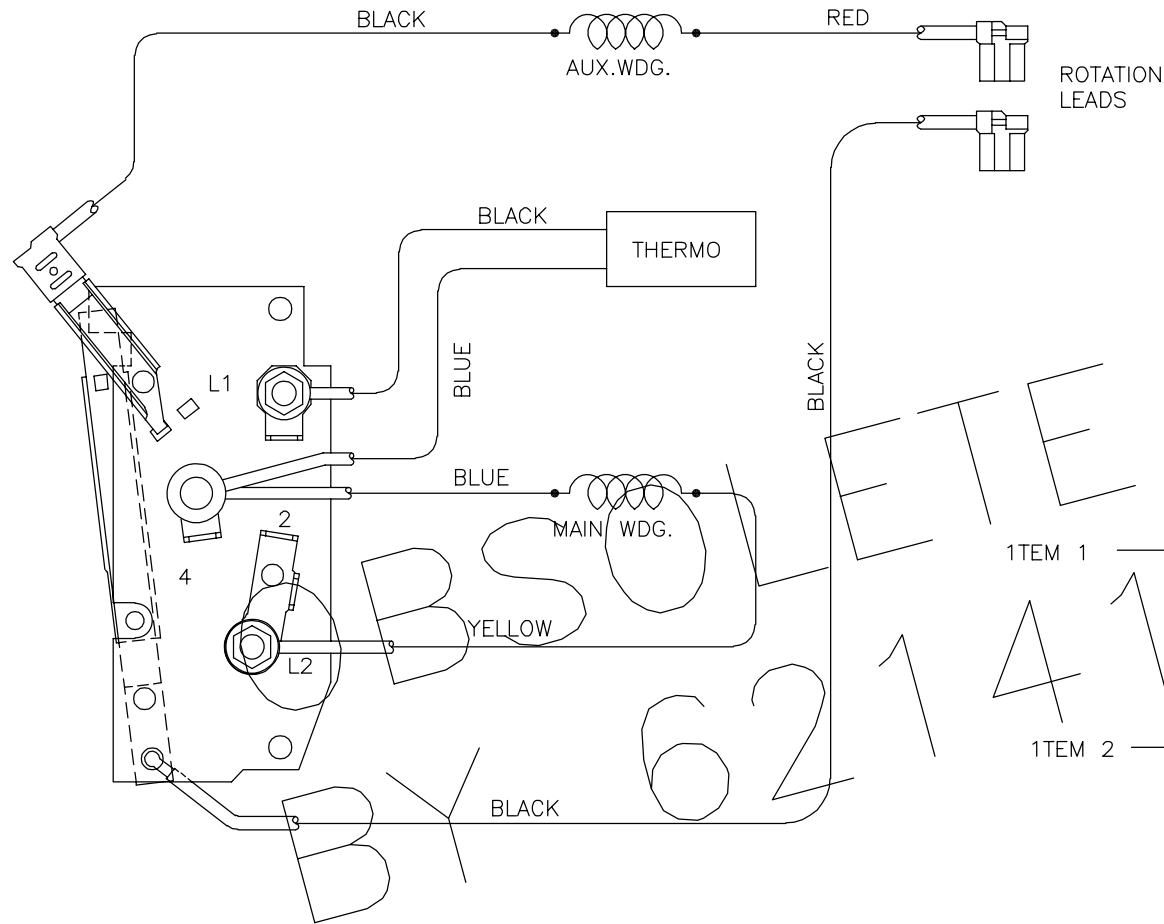
1

REV	ECO	REV BY	DATE	APPD	DATE
C	0013528	TZ	06-21-2010	KG	06-21-2010

P / N	ROT	VOLT	CONNECTION	NOTICE
621417-001	CCW	115	BLACK → 2	92GR
			RED → 4	0416
621417-001	CCW	115	RED → 2	97GR
			BLACK → 4	0134

SINGLE VOLTAGE: REVERSIBLE THERMAL PROTECTOR

NOTES:
 1. CONNECT ROTATION LEADS PER DASH CONDITION SPECIFIED ON BOM FOR MODEL.
 2. LEAD LOCATION SHOULD BE ESSENTIALLY AS SHOWN.



ETE REPLACEMENT 001-501
 1TEM 1
 1TEM 2

PARTS LIST			
ITEM	REQ.	DESCRIPTION	PART NUMBER
1	1	TERM-INSUL	167A168H01
2	5	HEX NUT-#8	368C210H05

GEOMETRIC CHARACTERISTICS & SYMBOLS

- ▭ FLATNESS
- STRAIGHTNESS
- ∠ ANGULARITY
- ⊥ PERPENDICULARITY (SQUARENESS)
- // PARALLELISM
- ROUNDNESS (CIRCULARITY)
- ⊘ CYLINDRICITY
- △ PROFILE OF ANY SURFACE
- ∩ PROFILE OF ANY LINE
- ↗ RUNOUT
- ⊕ TRUE POSITION
- ◎ CONCENTRICITY
- ≡ SYMMETRY

UNLESS OTHERWISE SPECIFIED DIM. TOLERANCES ARE AS FOLLOWS:

INCH	X	XX	XXX	XXXX
mm	±0.1	±0.02	±0.005	±0.0005
mm	±0.5	±0.13	±0.013	

ANG. ±50 DEG
 REMOVE BURRS & BREAK SHARP EDGES:
 INCH .003-.015 mm 0.1-0.4
 CORNER FILLETS TO:
 INCH .020 mm 0.5
 MACHINE SURFACES:
 INCH 125 mm 3.2
 METRIC DIMS. SHOWN IN [BRACKETS]

DR BY: WENDLING 07-09-1992

APPD:

THIRD ANGLE PROJECTION

EDS DATE 02-22-2008
 FORMAT REV F

CONFIDENTIAL: THIS DRAWING AND ITS INFORMATION ARE THE EXCLUSIVE AND CONFIDENTIAL PROPERTY OF A.O. SMITH CORP. AND ARE NOT TO BE DISCLOSED, DUPLICATED, DISTRIBUTED OR OTHERWISE USED WITHOUT THE WRITTEN CONSENT OF A.O. SMITH CORP.
 -ALL RIGHTS RESERVED. ASME Y14.5M 1994

AC Smith **ELECTRICAL PRODUCTS COMPANY**
Innovation has a name. A DIVISION OF A. O. SMITH CORPORATION

DESCRIPTION: EXTERNAL PARTS GROUP

SIZE C DWG NO 621417-001

SCALE NONE SHEET 1

4

3

2

1

4

3

2

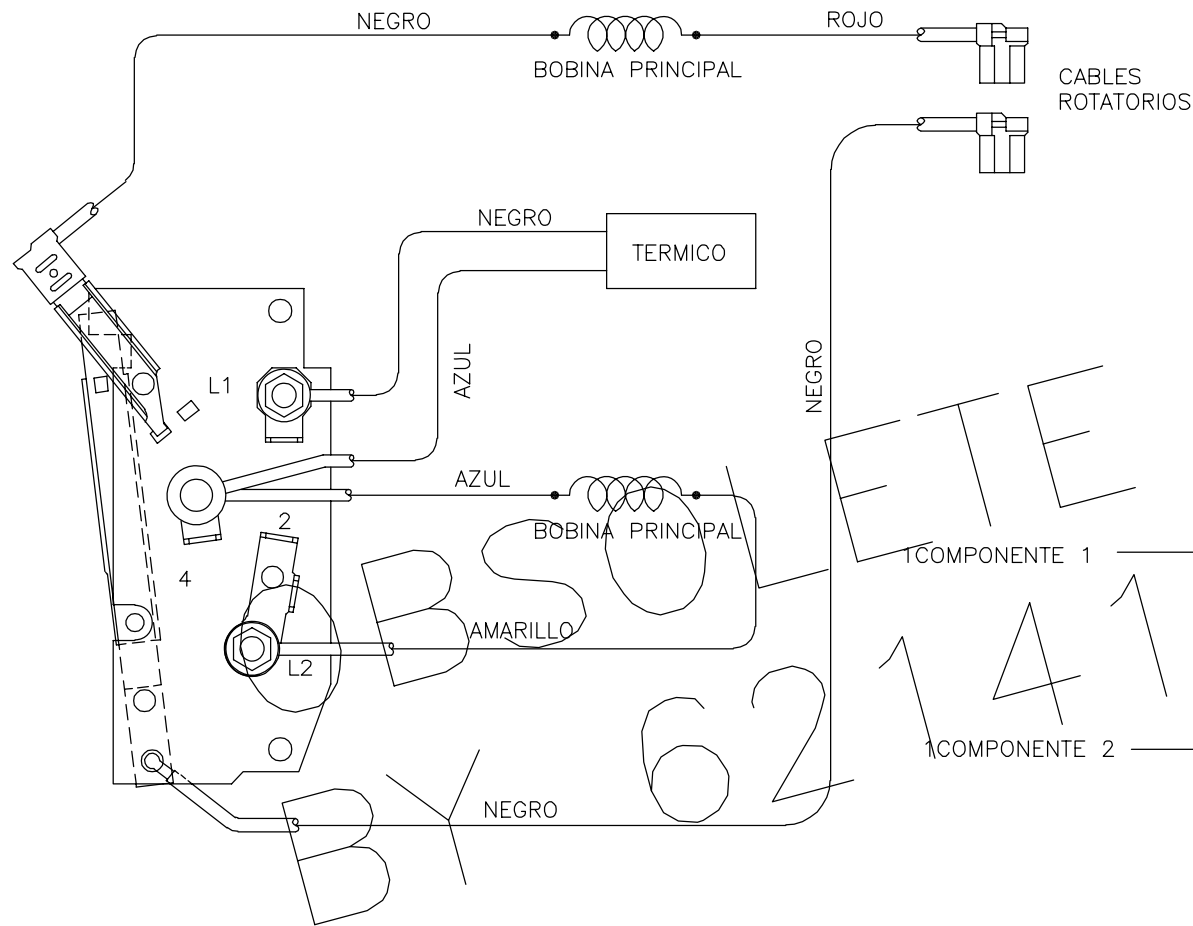
1

REVISION:	ECO	REVISADO POR:	FECHA:	APROBADO POR:	FECHA:
C	0013528	TZ	06-21-2010	KG	06-21-2010

N / P	VOLTAJE	CONEXION	AVISO
621417-001	CCW	115	NEGRO → 2 92GR
			ROJO → 4 0416
621417-001	CCW	115	ROJO → 2 97GR
			NEGRO → 4 0134

VOLTAGE SIMPLE: REVERSIBLE
PROTECCION TERMICA

- NOTAS:
1. CONECTAR CABLES ROTATORIOS DE ACUERDO A LA CONDICION ESPECIFICADA EN EL BOM PARA EL MODELO.
 2. LA LOCALIZACION DE LOS CABLES DEBE SER ESENCIALMENTE COMO ESTA MOSTRADA.



REPLACEMENT

001-S01

4

LISTA DE PARTES			
COMP	REQ.	DESCRIPCION	NUMERO DE PARTE
1	1	AISLANTE TERMICO	167A168H01
2	5	TUERCA HEXAGONAL-#8	368C210H05

CARACTERISTICAS DE GEOMETRIA Y SIMBOLOS

- ▭ PLANICIDAD
- RECTITUD
- ∠ ANGULARIDAD
- ⊥ PERPENDICULARIDAD (A ESCUADRA)
- // PARALELISMO
- REDONDEZ (CIRCULARIDAD)
- ∅ CILINDRICIDAD
- △ PERFIL DE CUALQUIER SUPERFICIE
- ∧ PERFIL DE CUALQUIER LINEA
- ∧ VARIACION
- ⊕ POSICION REAL
- ◎ CONCENTRICIDAD
- ≡ SIMETRIA

A MENOS QUE SE ESPECIFIQUE DE OTRA MANERA, LAS TOLERANCIAS DE LAS DIMS; SON LAS SIGUIENTES:

PULG ±.1 ±.02 ±.005 ±.0005
mm ±0.5 ±0.13 ±0.013

ANG. ±50 GRADOS

ELIMINAR REBABAS Y ORILLAS FILOSAS DEL BORDE.

PULG .003-.015 mm 0.1-0.4
FILETEAR ESQUINA: PULG .020 mm 0.5
MAQUINAR SUPERFICIES
PULG 125 mm .32

DIMS METRICAS MOSTRADAS [PARENTESIS]

DIBUJADO POR: WENDLING 07-09-1992

APROBADO POR:

TERCER ANGULO DE PROYECCION

FECHA EDS: 02-22-2008
REV. FORMATO: F

CONFIDENCIAL: ESTE DIBUJO Y SU INFORMACION SON PROPIEDAD DE USO EXCLUSIVO Y CONFIDENCIAL DE A.O.SMITH CORP. Y NO DEBERAN SER REVELADOS, DUPLICADOS, DISTRIBUIDOS O USARSE DE OTRA MANERA SIN EL CONSENTIMIENTO ESCRITO DE A.O. SMITH CORP. -TODOS LOS DERECHOS RESERVADOS. ASME Y14.5M 1994

ACSmith **ELECTRICAL PRODUCTS COMPANY**
Innovation has a name. A DIVISION OF A. O. SMITH CORPORATION

DESCRIPCION: EXTERNAL PARTS GROUP

TAMAÑO: C NUMERO DE DIBUJO: 621417-001

ESCALA: NONE HOJA: 1

4

3

2

1

4

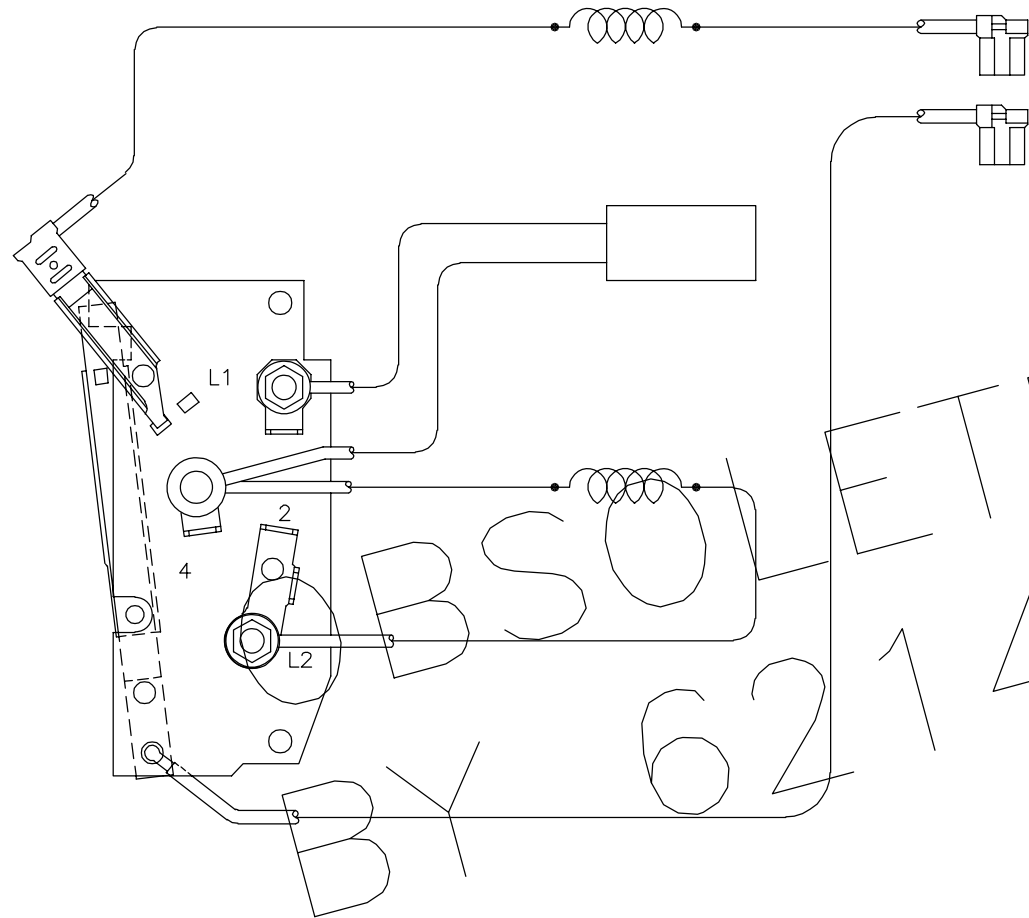
3

2

1

版本	ECO	编制	日期	批准	日期
C	0013528	TZ	06-21-2010	KG	06-21-2010

621417-001	CCW	115	→ 2 → 4	92GR 0416
621417-001	CCW	115	→ 2 → 4	97GR 0134



REPLACED
621417-001-S01

	REQ.	
1	1	167A168H01
2	5	368C210H05

形位公差

- 平面度
- 直线度
- ∠ 倾斜度
- ⊥ 垂直度
- // 平行度
- 圆度
- ⊘ 圆柱度
- △ 面轮廓度
- ∩ 线轮廓度
- ↗ 圆跳动
- ⊕ 位置度
- ◎ 同轴度
- ≡ 对称度

除另有注明
尺寸公差如下:

英寸	X	XX	XXX	XXXX
毫米	±.1	±.02	±.005	±.0005
毫米	±0.5	±0.13	±0.013	

角度 ±.50 度
清理毛刺和尖棱
英寸 .003-.015 毫米 0.1-0.4
内圆角
英寸 .020 毫米 0.5
表面粗糙度
英制 125 米制 3.2
米制尺寸显示在 []

绘图: WENGLING 07-09-1992

批准:

第三角投影

图纸格式发布日期 02-22-2008
图纸格式版本 F

机密: 本图纸及相关信息所有权归A. O. SMITH公司所有。
未经A. O. SMITH公司书面授权, 不得泄露、复制、传播或作
其他用途。—版权所有

ASME Y14.5M 1994

ACSmith **ELECTRICAL PRODUCTS COMPANY**
Innovation has a name. A DIVISION OF A. O. SMITH CORPORATION

名称: EXTERNAL PARTS GROUP

图幅: C 图号: 621417-001

比例: NONE 页号: 1

4

3

2

1