

# PRODUCT INFORMATION PACKET



Model No: OCB1036A  
Catalog No: OCB1036A

OEM Replacement Motor, 1/3 HP, 1 Ph, 60 Hz, 208-230 V, 1075 RPM, 2 Speed, 48 Frame, SEMI ENCLOSED



Regal and Century are trademarks of Regal Rexnord Corporation or one of its affiliated companies.

©2023 Regal Rexnord Corporation, All Rights Reserved. MC017097E





**Nameplate Specifications**

Phase	1	Output HP	1/3 Hp
Output KW	0.25 kW	Voltage	208-230 V
Speed	1075 rpm	Service Factor	1
Frame	48Y	Enclosure	Semi Enclosed
Thermal Protection	Automatic	Ambient Temperature	60 °C
Frequency	60 Hz	Current	2.5 A
Duty	Air Over	Insulation Class	B
UL	Recognized	CSA	Y
CE	N	Number of Speeds	2

**Technical Specifications**

Electrical Type	Permanent Split Capacitor	Starting Method	Across The Line
Poles	6	Rotation	Reversible
Mounting	Lug	Motor Orientation	Horizontal
Drive End Bearing	Sleeve	Opp Drive End Bearing	Sleeve
Frame Material	Rolled Steel	Shaft Type	Flat
Overall Length	8.45 in	Frame Length	3.75 in
Shaft Diameter	0.500 in	Shaft Extension	4.2 in
Outline Drawing	F48Z07A01-S01	Connection Drawing	614131-052

This is an uncontrolled document once printed or downloaded and is subject to change without notice. Date Created:08/24/2023

4 3 2 1

REV	ECO	REV BY	DATE	APPD	DATE
C	0004877	C. CARRILLO	03-04-2009	M. ARGUELLES	03-04-2009

GENERAL INFORMATION:

SHAFT RUNOUT: .001 [.03] T.I.R. PER INCH LENGTH OF EXTENSION

END PLAY: .010 [.25] TO .063 [1.60]

BEARINGS: SLEEVE

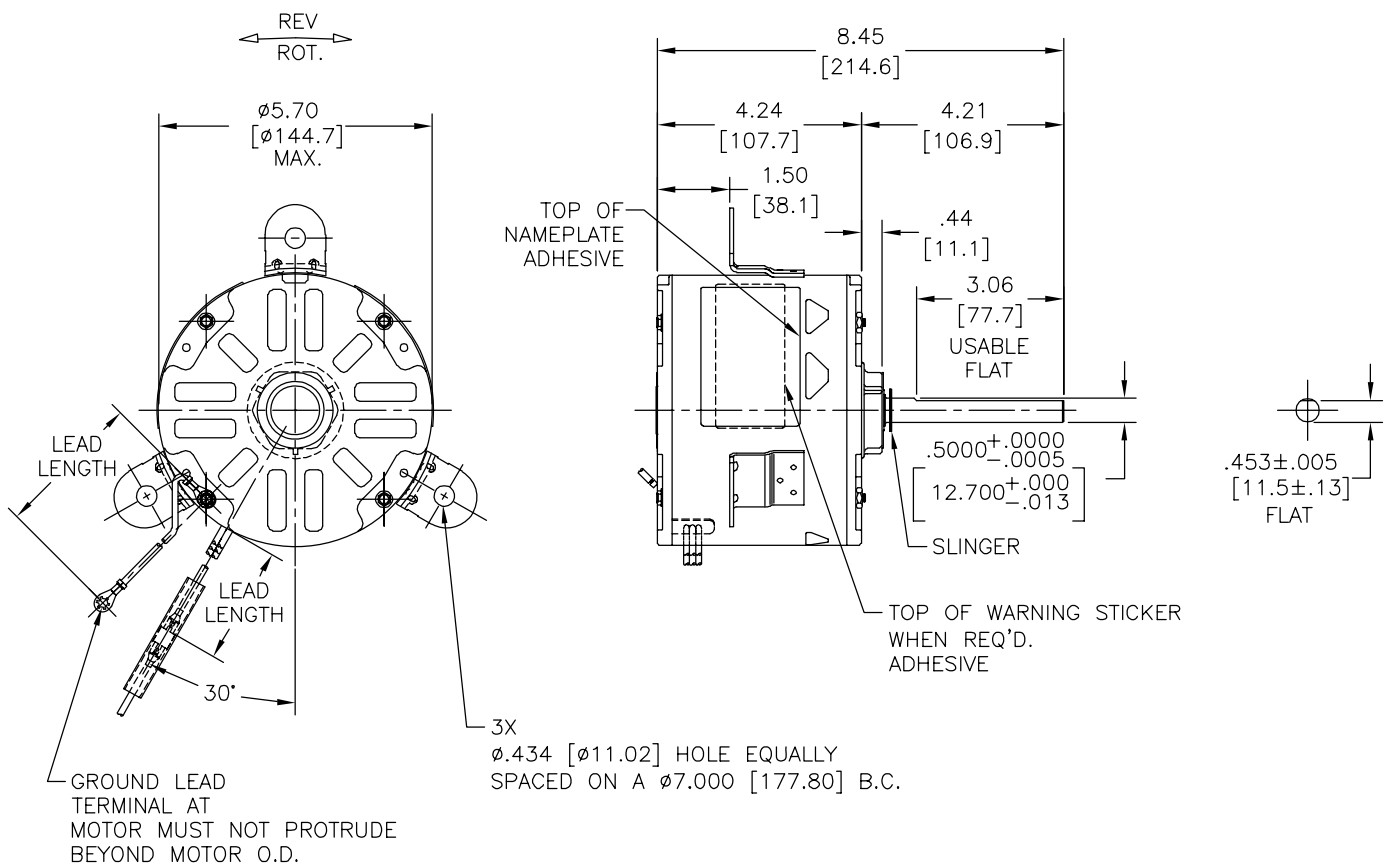
MOUNTING POSITION: HORIZONTAL

ELECTRICAL DATA:

OVERLOAD PROTECTOR: AUTOMATIC RESET (T.I. 7AM 036)

LEADS: NO. 18 GA., .06 [1.5] THK. EPDM 125°C INSUL.

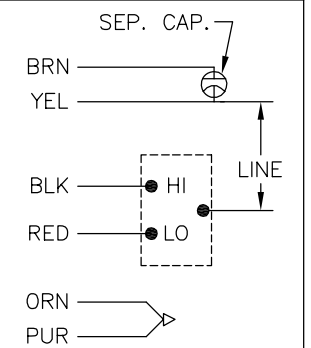
GROUND LEAD: NO. 18 GA., .03 [.8] THK. GRN INSUL.



NAMEPLATE DATA:

EXTERNAL CONNECTION DIAGRAM

MODEL NO.: F48Z07A01  
 CUST. P/N: OCB1036A  
 HP: 1/3  
 ROT.: REV  
 RPM: 1075/2 SPD  
 TYPE: UF  
 FRAME: 48Y  
 VOLTS: 208-230  
 PH: 1  
 AMPS: 2.5  
 HZ: 60  
 INS.: B  
 AMB.: 60°C  
 DUTY: AIR OVER  
 CAP.: 5.0 MFD/370 V  
 ENCL: SEMI-ENCL.  
 UL LOGO  
 CSA LOGO  
 THERMALLY PROTECTED



614131-052

COLOR	LENGTH	TERMINAL OR STRIP LENGTH
GREEN (GRD)	53.0/56.0 [1346/1422]	#10 EYELET
BROWN	53.0/56.0 [1346/1422]	.25 [6.4] FEMALE SPADE
YELLOW	53.0/56.0 [1346/1422]	.25 [6.4] FEMALE SPADE
BLACK	53.0/56.0 [1346/1422]	.25 [6.4] FEMALE SPADE
RED	53.0/56.0 [1346/1422]	.25 [6.4] FEMALE SPADE
ORANGE	53.0/56.0 [1346/1422]	.25 [6.4] FEMALE SPADE
PURPLE	53.0/56.0 [1346/1422]	.25 [6.4] FEMALE SPADE

MAIN FRAME - OLE	OPEN
END FRAME - OLE	OPEN
MAIN FRAME - LE	ENCLOSED
END FRAME - LE	OPEN

CUSTOMER	DIST SERVICES
----------	---------------

PERFORMANCE CURVE NO.	TORQUE @1075 RPM (25°C)	APPROVED SAMPLE	UL COMPONENT FILE #	CCN #	CSA FILE #	CLASS #
C21511	32.5 OZ. FT.	EX10604	E46412	PRGY2	LR43341	4211-01

GEOMETRIC CHARACTERISTICS & SYMBOLS

- FLATNESS
- STRAIGHTNESS
- ANGULARITY
- PERPENDICULARITY (SQUARENESS)
- PARALLELISM
- ROUNDNESS (CIRCULARITY)
- CYLINDRICITY
- PROFILE OF ANY SURFACE
- PROFILE OF ANY LINE
- RUNOUT
- TRUE POSITION
- CONCENTRICITY
- SYMMETRY

A.O. SMITH PROVIDES TECHNICAL ASSISTANCE TO OUR CUSTOMERS IN SEVERAL AREAS. SINCE A.O. SMITH DOES NOT RECEIVE ALL DATA CONCERNING THE USE AND APPLICATION OF THE MOTOR, THE SUITABILITY OF THE MOTOR FOR THE APPLICATION MUST BE DETERMINED BY THE CUSTOMER.

DIMENSIONS WITHOUT TOLERANCES ARE FOR REFERENCE ONLY.

DR BY: SRECKERS 03-19-2007

APPD: -

THIRD ANGLE PROJECTION

EDS DATE 01-21-2007  
 FORMAT REV F

CONFIDENTIAL: THIS DRAWING AND ITS INFORMATION ARE THE EXCLUSIVE AND CONFIDENTIAL PROPERTY OF A.O. SMITH CORP. AND ARE NOT TO BE DISCLOSED, DUPLICATED, DISTRIBUTED OR OTHERWISE USED WITHOUT THE WRITTEN CONSENT OF A.O. SMITH CORP. -ALL RIGHTS RESERVED. ASME Y14.5M 1994

**AOSmith**  
 Innovation has a name.

**ELECTRICAL PRODUCTS COMPANY**  
 A DIVISION OF A. O. SMITH CORPORATION

DESCRIPTION: **OUTLINE**

SIZE: C DWG NO: F48Z07A01

SCALE: NONE SHEET 1

4 3 2 1

4

3

2

1

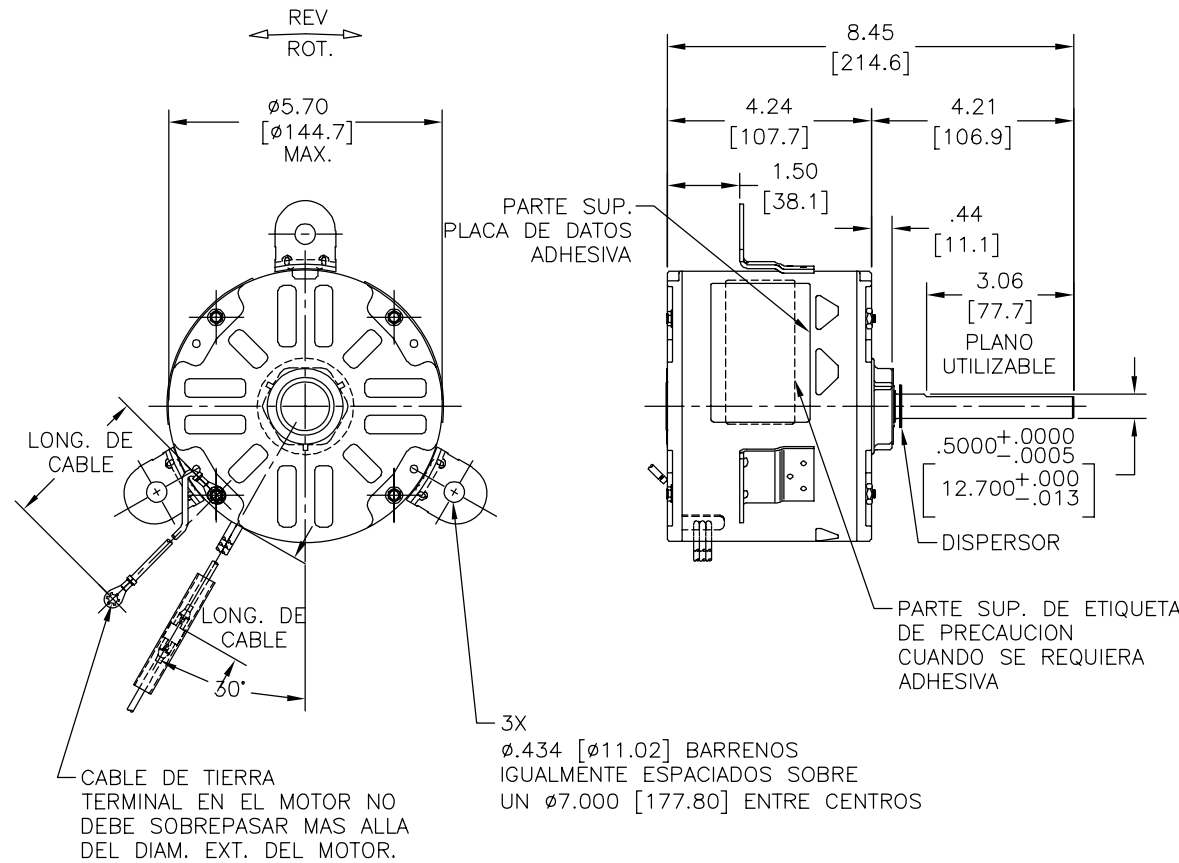
INFORMACION GENERAL:

OSCILACION DE FLECHA: .001 [.03] L.T.I. LONG. DE EXTENSION POR PULG.  
 JUEGO AXIAL: .010 [.25] A .063 [1.60]  
 BALEROS: MANGA  
 POSICION DEL MONTAJE: HORIZONTAL

INFORMACION ELECTRICA:

PROTECTOR DE SOBRECARGA: REINICIO AUTOMATICO (T.I. 7AM 036)  
 CABLES: CAL. NO. 18, .06 [1.5] DE ESP. EPDM A 125°C AISL.  
 CABLE DE TIERRA: CAL. NO. 18, .03 [.8] DE ESP. AISL. VERDE.

REVISION:	ECO	REVISADO POR:	FECHA:	APROBADO POR:	FECHA:
C	0004877	C. CARRILLO	03-04-2009	M. ARGUELLES	03-04-2009



VERDE (TIERRA)	53.0/56.0 [1346/1422]	#10 OJAL
CAFE	53.0/56.0 [1346/1422]	.25 [6.4] TER. HEMBRA TIPO ESPADA
AMARILLO	53.0/56.0 [1346/1422]	.25 [6.4] TER. HEMBRA TIPO ESPADA
NEGRO	53.0/56.0 [1346/1422]	.25 [6.4] TER. HEMBRA TIPO ESPADA
ROJO	53.0/56.0 [1346/1422]	.25 [6.4] TER. HEMBRA TIPO ESPADA
NARANJA	53.0/56.0 [1346/1422]	.25 [6.4] TER. HEMBRA TIPO ESPADA
MORADO	53.0/56.0 [1346/1422]	.25 [6.4] TER. HEMBRA TIPO ESPADA
COLOR	LONG.	TERMINAL O LONG. DE DESFORRE

CARCAZA PPAL. - OLE	ABIERTO
TAPA FINAL - OLE	ABIERTO
CARCAZA PPAL. - LE	CERRADO
TAPA FINAL - LE	ABIERTO

CLIENTE	DIST SERVICES
---------	---------------

INFORMACION DE ETIQUETA:	DIAGRAMA DE CONEXION EXTRNA
MODEL NO.: F48Z07A01 CUST. P/N: OCB1036A HP: 1/3 ROT.: REV RPM: 1075/2 SPD TYPE: UF FRAME: 48Y VOLTS: 208-230 PH: 1 AMPS: 2.5 HZ: 60 INS.: B AMB.: 60°C DUTY: AIR OVER CAP.: 5.0 MFD/370 V ENCL: SEMI-ENCL. UL LOGO CSA LOGO THERMALLY PROTECTED	SEP. CAP. CAFE AMAR. NEGRO ROJO NAR. MOR. LINEA MOSTRADO PARA ROT. CCWLE PARA ROT. CWLE INTERCAMBIAR CABLES NARANJA Y CAFE 614131-052

CURVAS DE FUNCIONAMIENTO	TORSION @1075 RPM (25°C)	MUESTRA APROBADA	COMPONENTE UL		CSA	
C21511	32.5 OZ. FT.	EX10604	#ARCHIVO	CCN #	#ARCHIVO	CLASE #
			E46412	PRGY2	LR43341	4211-01

- CARACTERISTICAS DE GEOMETRIA Y SIMBOLOS
- ✓ PLANICIDAD
  - RECTITUD
  - ∠ ANGULARIDAD
  - ⊥ PERPENDICULARIDAD (A ESCUADRA)
  - ∥ PARALELISMO
  - REDONDEZ (CIRCULARIDAD)
  - ∅ CILINDRICIDAD
  - △ PERFIL DE CUALQUIER SUPERFICIE
  - ∩ PERFIL DE CUALQUIER LINEA
  - ∇ VARIACION
  - ⊕ POSICION REAL
  - ⊙ CONCENTRICIDAD
  - = SIMETRIA

A.O. SMITH PROVEE ASISTENCIA TECNICA A NUESTROS CLIENTES EN VARIAS AREAS. DESDE QUE A.O. SMITH NO RECIBE TODOS LOS DATOS EN RELACION AL USO Y A LA APLICACION DEL MOTOR, LA APLICACION ADECUADA DEL MOTOR DEBE SER DETERMINADA POR EL CLIENTE.

DIMENSIONES SIN TOLERANCIA SON DE REFERENCIA SOLAMENTE

DIBUJADO POR: SRECKERS  
 APROBADO POR: -  
 TERCER ANGULO DE PROYECCION  
 FECHA EDS: 01-21-2007  
 REV. FORMATO: F

CONFIDENCIAL: ESTE DIBUJO Y SU INFORMACION SON PROPIEDAD DE USO EXCLUSIVO Y CONFIDENCIAL DE A.O.SMITH CORP. Y NO DEBERAN SER REVELADOS, DUPLICADOS, DISTRIBUIDOS O USARSE DE OTRA MANERA SIN EL CONSENTIMIENTO ESCRITO DE A.O. SMITH CORP. -TODOS LOS DERECHOS RESERVADOS.ASME Y14.5M 1994

**AC Smith**  
 Innovation has a name.  
**ELECTRICAL PRODUCTS COMPANY**  
 A DIVISION OF A. O. SMITH CORPORATION

DESCRIPCION: OUTLINE

TAMAÑO: C NUMERO DE DIBUJO: F48Z07A01

ESCALA: NONE HOJA: 1

4

3

2

1



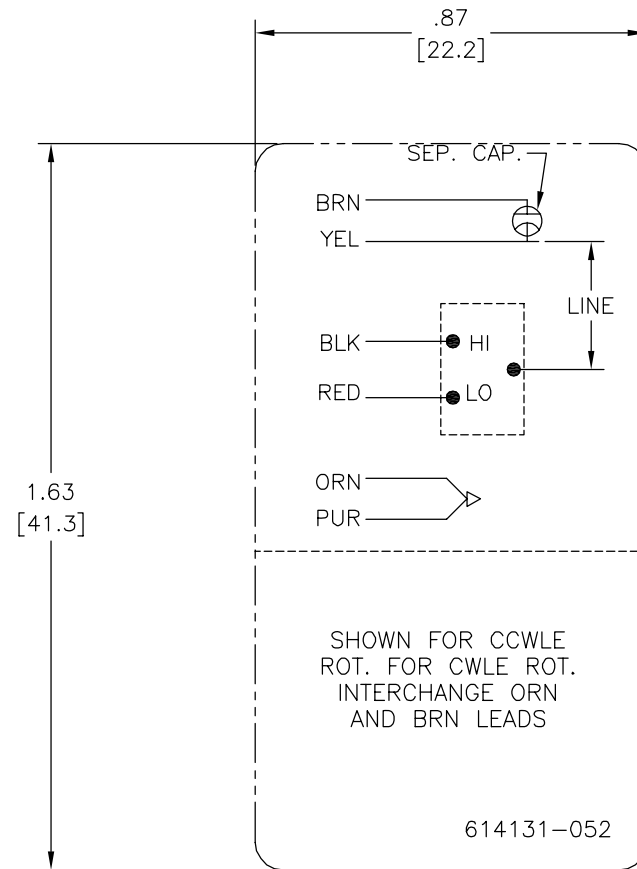
4

3

2

1

REV	ECO	REV BY	DATE	APPD	DATE
B	0020045	YL	04-15-2011	HZ	04-15-2011



- NOTES:  
 1. FOR USE WITH 614129 OR 2513020-001 NAMEPLATE BLANKS  
 2. \_\_\_\_\_ INDICATES DIMENSION LIMITS

GEOMETRIC CHARACTERISTICS & SYMBOLS

- FLATNESS
- STRAIGHTNESS
- ∠ ANGULARITY
- ⊥ PERPENDICULARITY (SQUARENESS)
- // PARALLELISM
- ROUNDNESS (CIRCULARITY)
- ⊘ CYLINDRICITY
- △ PROFILE OF ANY SURFACE
- ∩ PROFILE OF ANY LINE
- ↗ RUNOUT
- ⊕ TRUE POSITION
- ◎ CONCENTRICITY
- ≡ SYMMETRY

UNLESS OTHERWISE SPECIFIED  
 DIM. TOLERANCES ARE AS FOLLOWS:

INCH	±.1	±.02	±.005	±.0005
mm	±0.5	±0.13	±0.013	

ANG. ±.50 DEG  
 REMOVE BURRS & BREAK SHARP EDGES:  
 INCH .003-.015 mm 0.1-0.4

CORNER FILLETS TO:  
 INCH .020 mm 0.5

MACHINE SURFACES:  
 INCH 125 mm 3.2

METRIC DIMS. SHOWN IN [BRACKETS]

DR BY:	YL	04-15-2011
APPD:	HZ	04-15-2011
THIRD ANGLE PROJECTION		EDS DATE 02-22-2008 FORMAT REV F
CONFIDENTIAL: THIS DRAWING AND ITS INFORMATION ARE THE EXCLUSIVE AND CONFIDENTIAL PROPERTY OF A.O. SMITH CORP. AND ARE NOT TO BE DISCLOSED, DUPLICATED, DISTRIBUTED OR OTHERWISE USED WITHOUT THE WRITTEN CONSENT OF A.O. SMITH CORP. -ALL RIGHTS RESERVED. ASME Y14.5M 1994		

		<b>ELECTRICAL PRODUCTS COMPANY</b> <small>A DIVISION OF A. O. SMITH CORPORATION</small>	
DESCRIPTION CONN DIAGRAM-NAMEPLATE			
SIZE C	DWG NO 614131-052		
SCALE		SHEET 1	

4

3

2

1

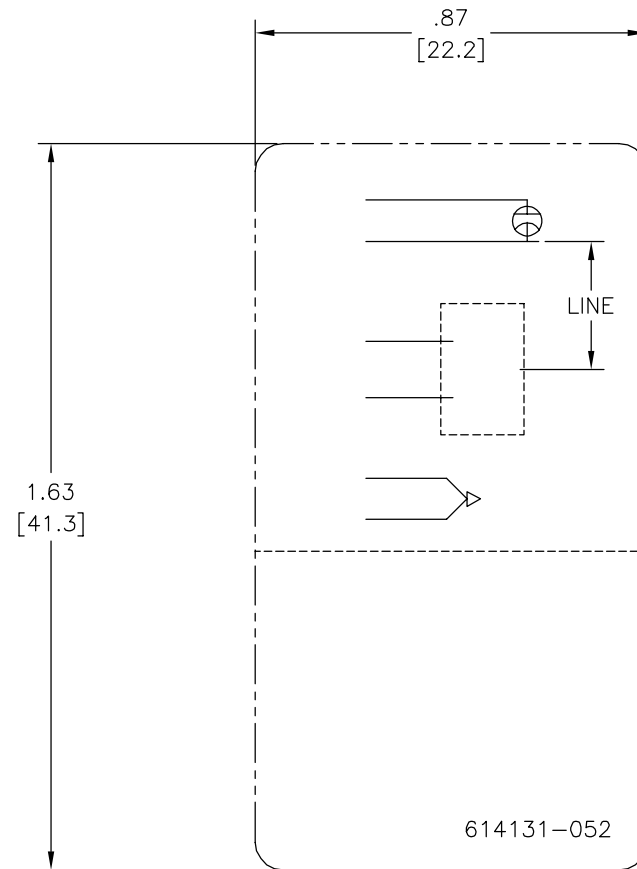
4

3

2

1

REVISION:	ECO	REVISADO POR:	FECHA:	APROBADO POR:	FECHA:
B	0020045	YL	04-15-2011	HZ	04-15-2011



- NOTAS:  
 1. PARA USO CON PLACA DE DATOS EN BLANCO 614129 OR 2513020-001.  
 2. INDICA LIMITES DE DIMENSION

CARACTERISTICAS DE GEOMETRIA Y SIMBOLOS ▢ PLANICIDAD — RECTITUD ∠ ANGULARIDAD ⊥ PERPENDICULARIDAD (A ESCUADRA) // PARALELISMO ○ REDONDEZ (CIRCULARIDAD) ∅ CILINDRICIDAD △ PERFIL DE CUALQUIER SUPERFICIE ▲ PERFIL DE CUALQUIER LINEA ↗ VARIACION ⊕ POSICION REAL ⊙ CONCENTRICIDAD = SIMETRIA	A MENOS QUE SE ESPECIFIQUE DE OTRA MANERA, LAS TOLERANCIAS DE LAS DIMS; SON LAS SIGUIENTES: PULG $\pm .1$ $\pm .02$ $\pm .005$ $\pm .0005$ mm $\pm 0.5$ $\pm 0.13$ $\pm 0.013$ ANG. $\pm 50$ GRADOS ELIMINAR REBABAS Y ORILLAS FILOSAS DEL BORDE. PULG $.003-.015$ mm 0.1-0.4 FILETEAR ESQUINA: PULG .020 mm 0.5 MAQUINAR SUPERFICIES PULG $125$ mm $3.2$ DIMS METRICAS MOSTRADAS [PARENTESIS]	DIBUJADO POR: YL	04-15-2011	ELECTRICAL PRODUCTS COMPANY A DIVISION OF A. O. SMITH CORPORATION	
		APROBADO POR: HZ	04-15-2011		DESCRIPCION: CONN DIAGRAM-NAMEPLATE
		TERCER ANGULO DE PROYECCION	FECHA EDS: 02-22-2008 REV. FORMATO: F	TAMAÑO: C	NUMERO DE DIBUJO: 614131-052
		CONFIDENCIAL: ESTE DIBUJO Y SU INFORMACION SON PROPIEDAD DE USO EXCLUSIVO Y CONFIDENCIAL DE A.O.SMITH CORP. Y NO DEBERAN SER REVELADOS, DUPLICADOS, DISTRIBUIDOS O USARSE DE OTRA MANERA SIN EL CONSENTIMIENTO ESCRITO DE A.O. SMITH CORP. -TODOS LOS DERECHOS RESERVADOS.ASME Y14.5M 1994			ESCALA:

4

3

2

1

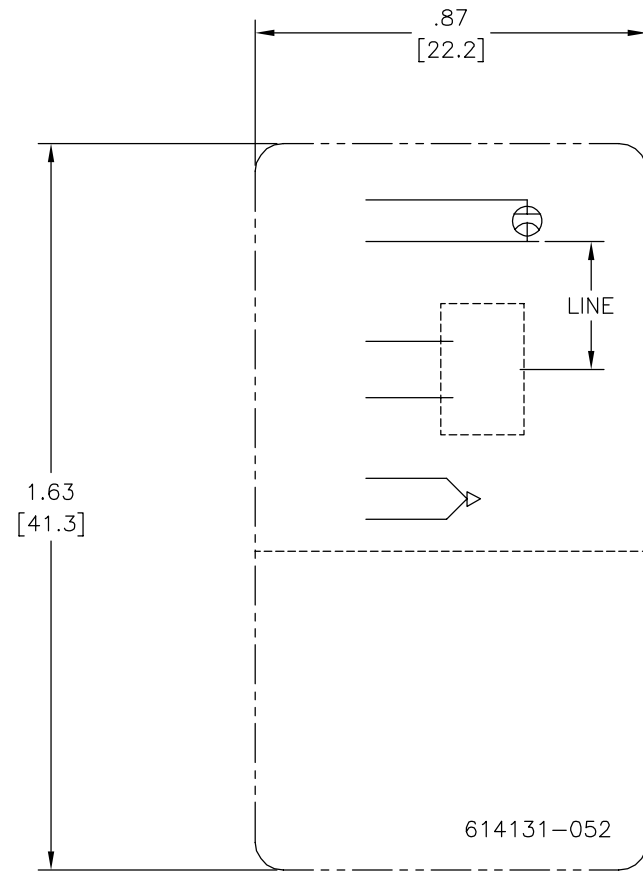
4

3

2

1

版本	ECO	编制	日期	批准	日期
B	0020045	YL	04-15-2011	HZ	04-15-2011



形位公差
□ 平面度
— 直线度
∠ 倾斜度
⊥ 垂直度
// 平行度
○ 圆度
⊘ 圆柱度
△ 面轮廓度
∩ 线轮廓度
↗ 圆跳动
⊕ 位置度
⊙ 同轴度
≡ 对称度

除另有注明 尺寸公差如下:
英寸 X XX XXX XXXX
毫米 ±0.1 ±0.02 ±0.005 ±0.0005
毫米 ±0.5 ±0.13 ±0.013
角度 ±.50 度
清理毛刺和尖棱
英寸 .003-.015 毫米 0.1-0.4
内圆角
英寸 .020 毫米 0.5
表面粗糙度
英制 125 米制 3.2
米制尺寸显示在 [ ]

绘图:	YL	04-15-2011
批准:	HZ	04-15-2011
第三角投影		图纸格式发布日期 02-22-2008 图纸格式版本 F
机密: 本图纸及相关信息所有权归A. O. SMITH公司所有。 未经A. O. SMITH公司书面授权, 不得泄露、复制、传播或作 其他用途。—版权所有		
ASME Y14.5M 1994		

<b>ELECTRICAL PRODUCTS COMPANY</b> <small>INNOVATION HAS A NAME. A DIVISION OF A. O. SMITH CORPORATION</small>	
名称	CONN DIAGRAM-NAMEPLATE
图幅	C
图号	614131-052
比例	
页号	1

4

3

2

1