

PRODUCT INFORMATION PACKET



Model No: OKA1072
Catalog No: OKA1072

General Purpose Motor, 3/4 HP, 1 Ph, 60 Hz, 115/230 V, 3600 RPM, 48Z Frame, ODP



Regal and Century are trademarks of Regal Rexnord Corporation or one of its affiliated companies.
©2022 Regal Rexnord Corporation, All Rights Reserved. MC017097E





Nameplate Specifications

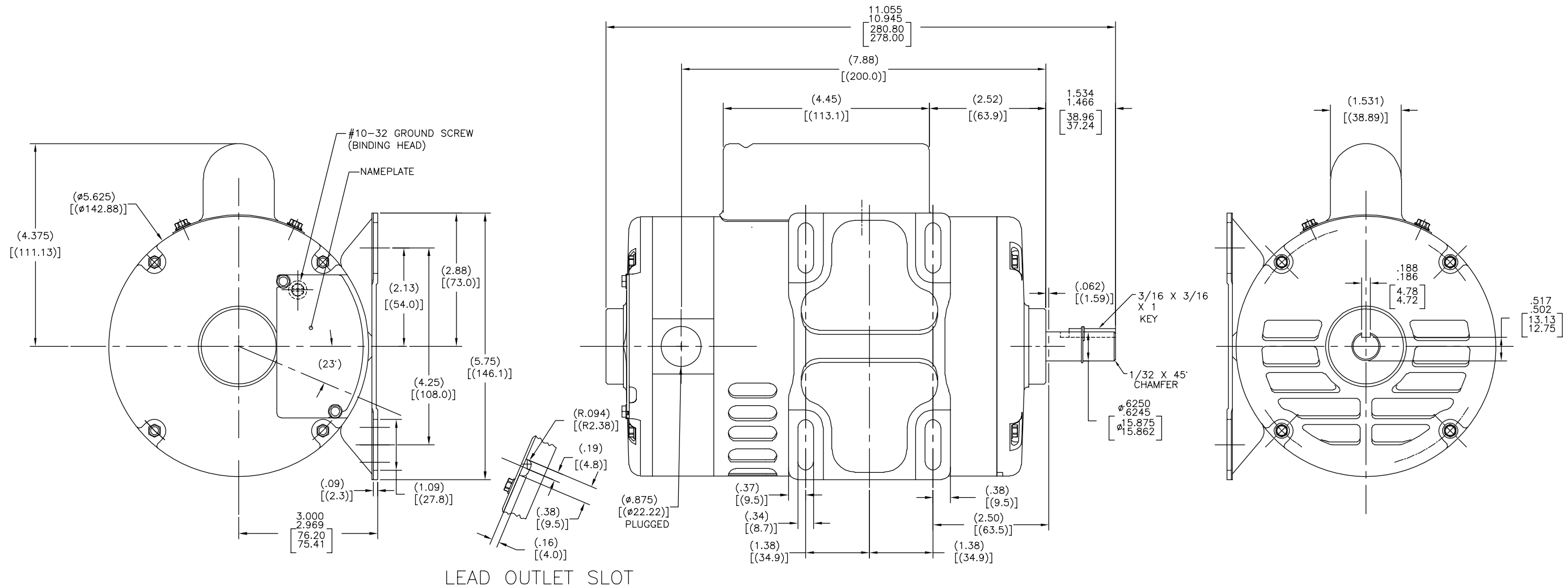
Output HP	3/4 Hp	Output KW	0.56 kW
Frequency	60 Hz	Voltage	115/230 V
Current	9.6/4.8 A	Speed	3450 rpm
Service Factor	1.25	Phase	1
Duty	Continuous	Insulation Class	A
Frame	48Z	Enclosure	Open Drip Proof
Thermal Protection	Automatic	Ambient Temperature	40 °C
UL	Recognized	CSA	Y
CE	N	Number of Speeds	1

Technical Specifications

Electrical Type	Capacitor Start	Starting Method	Across The Line
Poles	2	Rotation	Reversible
Mounting	Rigid Base	Drive End Bearing	Ball
Opp Drive End Bearing	Ball	Frame Material	Rolled Steel
Shaft Type	Keyed	Overall Length	11.06 in
Frame Length	6.38 in	Shaft Diameter	0.625 in
Shaft Extension	1.53 in		
Outline Drawing	OKA1072-S01	Connection Drawing	613128-001

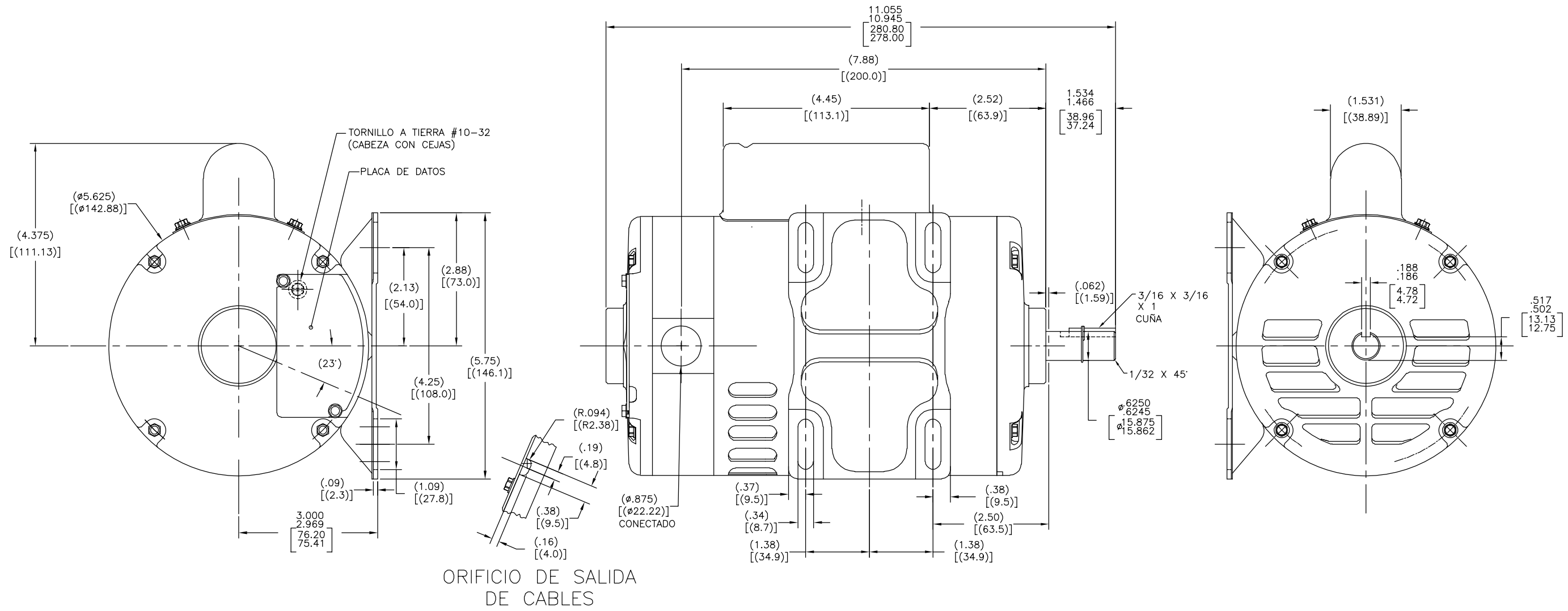
This is an uncontrolled document once printed or downloaded and is subject to change without notice. Date Created:11/28/2022

REV	ECO	REV BY	DATE	APPD	DATE
V	ECO-0022029	J. COX	12-15-2011	M. SCOTT	12-15-2011



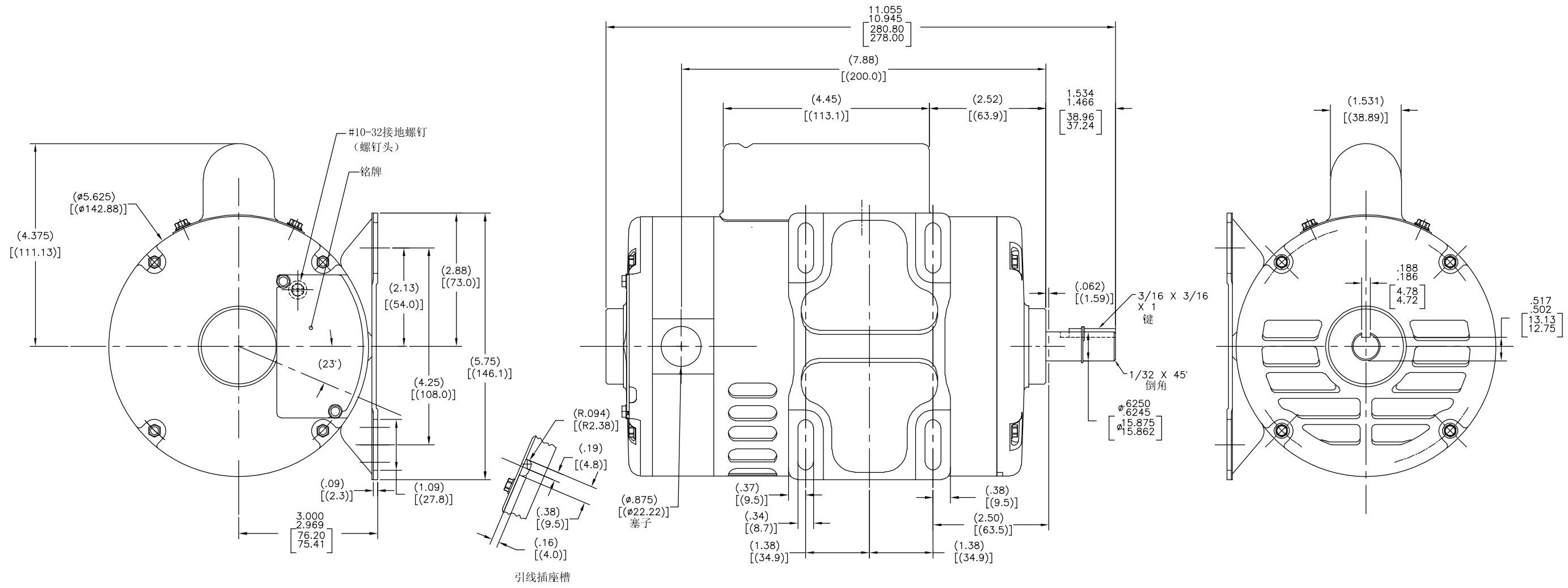
GEOMETRIC CHARACTERISTICS & SYMBOLS □ FLATNESS — STRAIGHTNESS ∠ ANGULARITY ⊥ PERPENDICULARITY (SQUARENESS) // PARALLELISM ○ ROUNDNESS (CIRCULARITY) ⌀ CYLINDRICITY ≡ PROFILE OF ANY SURFACE ^ PROFILE OF ANY LINE † RUNOUT † TRUE POSITION ⊙ CONCENTRICITY = SYMMETRY	UNLESS OTHERWISE SPECIFIED DIM. TOLERANCES ARE AS FOLLOWS: INCH ± .1 ± .02 ± .005 ± .0005 mm ± 0.5 ± 0.13 ± 0.013 ANG. ± 50 DEG REMOVE BURRS & BREAK SHARP EDGES: INCH .003-.015 mm 0.1-0.4 CORNER FILLETS TO: INCH .020 mm 0.5 MACHINE SURFACES: INCH 125 mm 3.2	DR BY: CGP	12-17-1967	REGAL-BELOIT CORPORATION REGAL-BELOIT CORPORATION	
		APPD: MAS	12-19-1967		DESCRIPTION
		THIRD ANGLE PROJECTION	EDS DATE 11-11-2011 FORMAT REV G	SIZE D	DWG NO OKA1072
		CONFIDENTIAL: THIS DRAWING AND ITS INFORMATION ARE THE EXCLUSIVE AND CONFIDENTIAL PROPERTY OF REGAL-BELOIT CORPORATION AND ARE NOT TO BE DISCLOSED, DUPLICATED, DISTRIBUTED OR OTHERWISE USED WITHOUT THE WRITTEN CONSENT OF REGAL-BELOIT CORPORATION. -ALL RIGHTS RESERVED.		SCALE NONE	SHEET 1

REVISION:	ECO	REVISADO POR:	J. COX	FECHA:	12-15-2011	APROBADO POR:	M. SCOTT	FECHA:	12-15-2011
V	ECO-0022029								

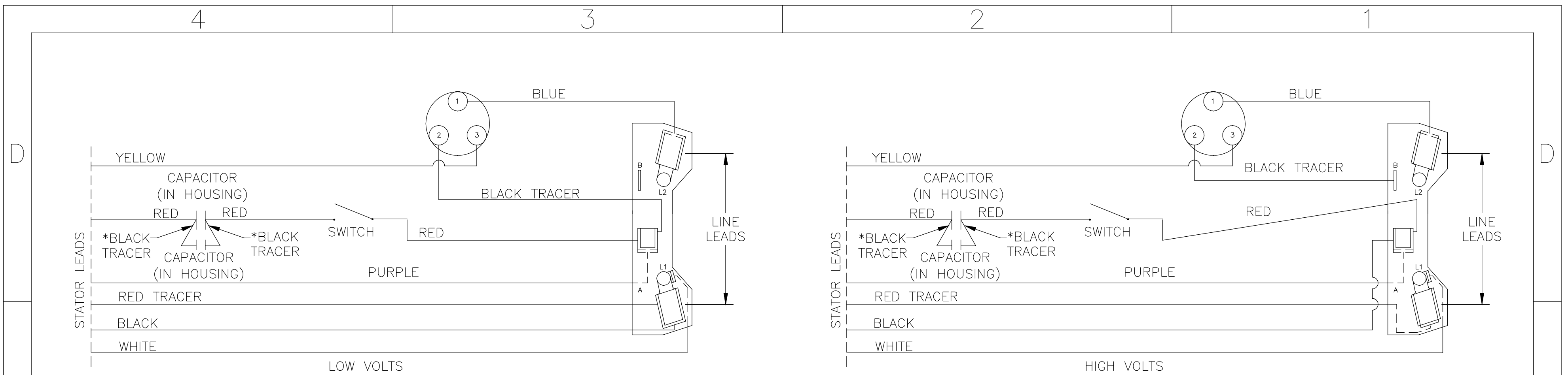


CARACTERISTICAS DE GEOMETRIA Y SIMBOLOS: □ PLANICIDAD — RECTITUD ∠ ANGULARIDAD ⊥ PERPENDICULARIDAD (A ESCUADRA) // PARALELISMO ○ REDONDEZ (CIRCULARIDAD) H CILINDRICIDAD ≡ PERFIL DE CUALQUIER SUPERFICIE ^ PERFIL DE CUALQUIER LINEA † VARIACION ⊕ POSICION REAL ⊙ CONCENTRICIDAD = SIMETRIA	A MENOS QUE SE ESPECIFIQUE DE OTRA MANERA, LAS TOLERANCIAS DE LAS DIMS; SON LAS SIGUIENTES: PULG ±.1 ±.02 ±.005 ±.0005 mm ±0.5 ±0.13 ±0.013 ANG ±50 GRADOS ELIMINAR REBABAS Y ORILLAS FILOSAS DEL BORDE. PULG .003-.015 mm 0.1-0.4 FILETEAR ESQUINA: PULG .020 mm 0.5 MAQUINAR SUPERFICIES PULG 125 mm 3.2 DIMS METRICAS MOSTRADAS [PARENTESIS]	DIBUJADO POR: CGP	12-17-1967	DESCRIPCION: MODEL-CFHP-48FR OUTLINE
		APROBADO POR: MAS	12-19-1967	
		TERCER ANGULO DE PROYECCION	FECHA EDS: 11-11-2011 REV. FORMATO: G	ESCALA: NONE
		CONFIDENCIAL: ESTE DIBUJO Y SU INFORMACION SON PROPIEDAD DE USO EXCLUSIVO Y CONFIDENCIAL DE REGAL-BELOIT CORPORATION, Y NO DEBERAN SER REVELADOS, DUPLICADOS, DISTRIBUIDOS O USARSE DE OTRA MANERA SIN EL CONSENTIMIENTO ESCRITO DE REGAL-BELOIT CORPORATION. -TODOS LOS DERECHOS RESERVADOS.		HOJA: 1

版本	ECO	编制	日期	批准	日期
V	ECO-0022029	J. COX	12-15-2011	M. SCOTT	12-15-2011

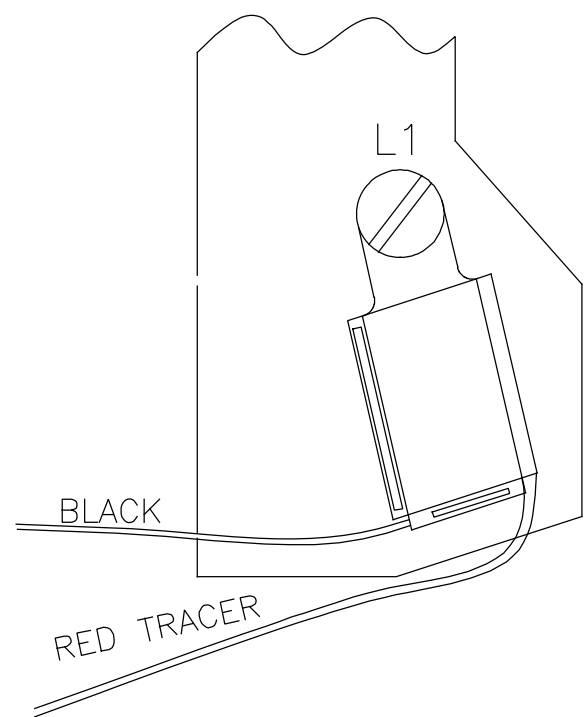


形位公差 □ 平面度 — 直线度 ∠ 倾斜度 ⊥ 垂直度 // 平行度 ○ 圆度 H 圆柱度 面轮廓度 线轮廓度 ↗ 圆跳动 ⊕ 位置度 ⊙ 同轴度 = 对称度	除另有注明 尺寸公差如下: 英寸 X XX XXX XXXX 毫米 ±.1 ±.02 ±.005 ±.0005 毫米 ±0.5 ±0.13 ±0.013 角度 ±.50 度 清理毛刺和尖棱 英寸 .003-.015 毫米 0.1-0.4 内圆角 英寸 .020 毫米 0.5	绘图: CGP 批准: MAS 第三角投影	12-17-1967 12-19-1967 图纸格式发布日期 11-11-2011 图纸格式版本 G	名称 MODEL-CFHP-48FR OUTLINE
	图号 OKA1072	图幅 D	比例 NONE	页号 1
	图号 OKA1072	图幅 D	比例 NONE	页号 1
	图号 OKA1072	图幅 D	比例 NONE	页号 1



NOTES:

1. *DENOTES DUMMY LEAD ON STATOR COIL ASSY
2. ON LOW VOLTAGE CONNECTION STATOR LEADS TO BE LOCATED ON L1 TERMINAL AS SHOWN BELOW



PART NUMBER	RED L-T ASSY SWITCH TO TERM BD.	RED LEAD CAPACITOR TO SWITCH	BLUE L-T ASSY THST TO TERM BD	BLACK L-T ASSY THST TO TERM BD	REMARKS
613128-001	(058R18-AB-032-FJ)	(058R18-FX-025-08)	(058BL16-AB-035-08)	(058BT18-HB-035-08)	----

DRAWING REVISION H	REVISION BY F.NAVARRO	DATE 06-28-2017	TOLERANCES UNLESS OTHERWISE SPECIFIED DEC. INCH mm ANGLE .X ±0.1 [±2.5] ±0.5° .XX ±0.02 [±0.51] .XXX ±0.005 [±0.127] .XXXX ±0.0005 [±0.0127]	DRAWN BY: D.GOUGE	Regal Beloit America, Inc.
ECO ECO-0125635	APPROVED BY	DATE	REMOVE BURRS & BREAK SHARP EDGES .003/.015 [0.076/.381]	DATE: 01-14-1972	
ECO DESCRIPTION SEE ECO			CORNER FILLETS .02 [.51]	APPROVED BY: DW	
COPYRIGHT REGAL BELOIT AMERICA, INC. ALL RIGHTS RESERVED. PROPRIETARY AND CONFIDENTIAL INFORMATION - THIS DOCUMENT IS THE PROPERTY OF REGAL BELOIT AMERICA, INC. (OWNER) AND CONTAINS OWNER'S PROPRIETARY INFORMATION. ANY PERSON, CORPORATION OR OTHER FIRM RECEIVING IT IS DEEMED, BY RECEIVING IT, TO AGREE THAT IT, AND/OR ANY PART OF IT, SHALL NOT BE DISCLOSED TO ANY PERSON, CORPORATION OR OTHER ENTITY, DUPLICATED, AND/OR USED, EXCEPT AS EXPRESSLY APPROVED IN WRITING IN ADVANCE BY OWNER. THIS DOCUMENT SHALL BE RETURNED TO OWNER UPON REQUEST. IT MAY BE SUBJECT TO CERTAIN RESTRICTIONS UNDER APPLICABLE EXPORT CONTROL LAWS AND REGULATIONS.			MACHINED SURFACES $\frac{125}{\text{INCH}} \sqrt{\frac{3.2}{\text{mm}}}$ mm SHOWN IN [BRACKETS]	DATE: 01-14-1972	DESCRIPTION CONN DIAGRAM-EXTERNAL
			THIRD ANGLE PROJECTION	REFERENCE	MATERIAL
			SIZE DWG NO C 613128	PROCESS/FINISH	SHEET 1