

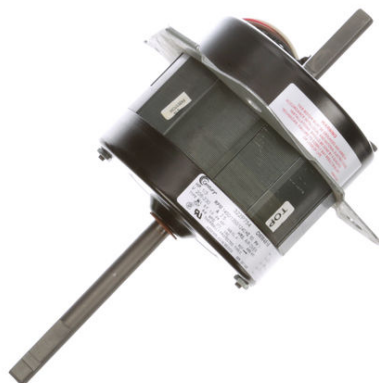
# PRODUCT INFORMATION PACKET



Model No: OWW4515

Catalog No: OWW4515

OEM Replacement Motor, 1/3 HP, 1 Ph, 60 Hz, 208-230 V, 1450/1350/1240 RPM, 3 Speed, 42 Frame, TEAO



Regal and Century are trademarks of Regal Rexnord Corporation or one of its affiliated companies.

©2023 Regal Rexnord Corporation, All Rights Reserved. MC017097E





### Nameplate Specifications

Phase	1	Output HP	1/3 Hp
Output KW	0.25 kW	Voltage	208-230 V
Speed	1450/1350/1240 rpm	Service Factor	1
Frame	42Y	Enclosure	Totally Enclosed Air Over
Thermal Protection	Automatic	Ambient Temperature	40 °C
Frequency	60 Hz	Current	2.5 A
Duty	Air Over	Insulation Class	A
UL	Recognized	CSA	Y
CE	N	Number of Speeds	3

### Technical Specifications

Electrical Type	Permanent Split Capacitor	Starting Method	Across The Line
Poles	4	Rotation	Counterclockwise Lead End
Mounting	Plate	Motor Orientation	Horizontal
Drive End Bearing	Sleeve	Opp Drive End Bearing	Sleeve
Frame Material	Na	Shaft Type	Flat
Overall Length	11.47 in	Shaft Diameter	0.500 in
Shaft Extension	5.2 X.5 X2.2 in		
Outline Drawing	11869-007	Connection Drawing	261B869F03

This is an uncontrolled document once printed or downloaded and is subject to change without notice. Date Created:08/24/2023

4 3 2 1

GENERAL INFORMATION:

SHAFT RUNOUT: .001[.03] T.I.R. PER INCH LENGTH OF EXTENSION

END PLAY: .010[.25] TO .063[1.60]

BEARINGS: SLEEVE

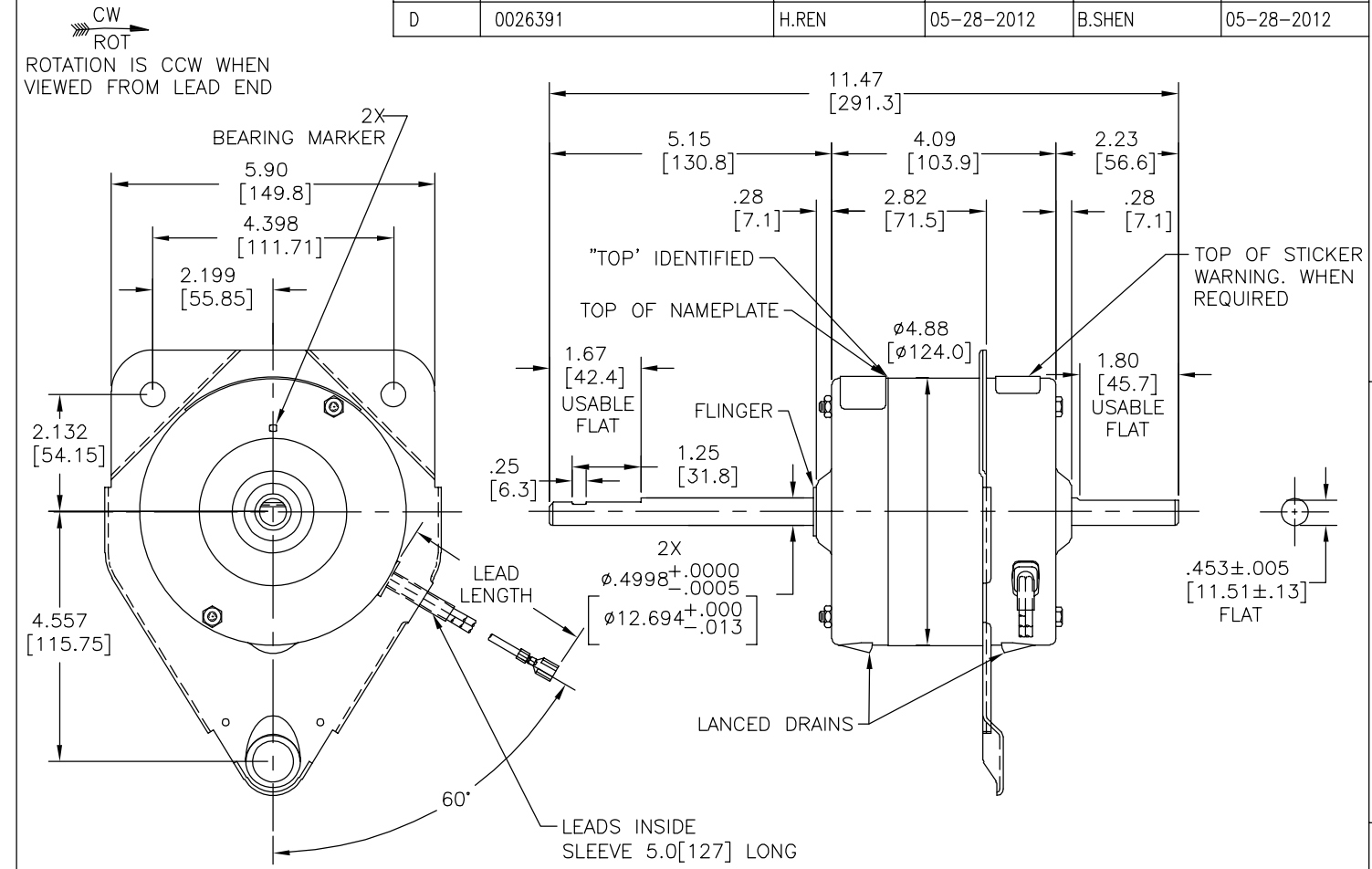
MOUNTING POSITION: HORIZONTAL

ELECTRICAL DATA:

OVERLOAD PROTECTOR: AUTOMATIC RESET (T.I. 7AM 034)

LEADS: NO. 18 GA., .03[.8] THK., 125°C INSULATION

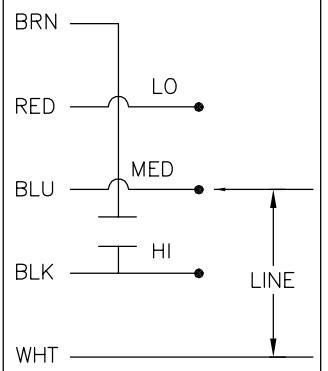
REV	ECO	REV BY	DATE	APPD	DATE
D	0026391	H.REN	05-28-2012	B.SHEN	05-28-2012



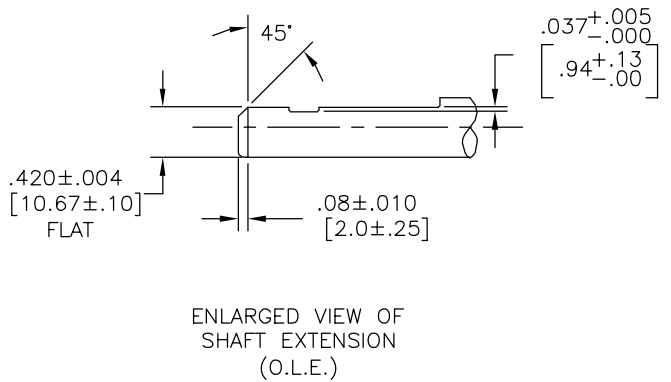
NAMEPLATE DATA:

EXTERNAL CONNECTION DIAGRAM

MODEL NO.: 322P754  
 CUST. P/N: OWW4515  
 HP: 1/3  
 ROT.: CCWLE  
 RPM: 1450/1350/1240  
 TYPE: FLL  
 FRAME: 42Y  
 VOLTS: 208/230  
 PH: 1  
 AMPS: 2.5  
 HZ: 60  
 INS.: A  
 AMB.: 40° C  
 DUTY: AIR COVER  
 CAP.: 8-6 MFD/ 370V  
 ENCL: -  
 UL LOGO  
 CSA LOGO  
 THERMALLY PROTECTED TYPE C



BROWN	22.5/24.5 [572/622]	.25[6.4] FEMALE SPADE
RED	22.5/24.5 [572/622]	.25[6.4] FEMALE SPADE
BLUE	22.5/24.5 [572/622]	.25[6.4] FEMALE SPADE
BLACK	22.5/24.5 [572/622]	.25[6.4] FEMALE SPADE
WHITE	22.5/24.5 [572/622]	.25[6.4] FEMALE SPADE
COLOR	LENGTH	TERMINAL OR STRIP LENGTH



MAIN FRAME - OLE	ENCLOSED
END FRAME - OLE	ENCLOSED
MAIN FRAME - LE	ENCLOSED
END FRAME - LE	ENCLOSED

CUSTOMER	DISTRIBUTION SERVICE
----------	----------------------

PERFORMANCE CURVE NO.	TORQUE @ 1450 RPM (25°C)	APPROVED SAMPLE	UL COMPONENT	CSA
C31090	22.6 OZ. FT.	322P401	FILE # CCN # FILE # CLASS #	E46412 PRGY2 LR43341 4211-01

GEOMETRIC CHARACTERISTICS & SYMBOLS

- FLATNESS
- STRAIGHTNESS
- ANGULARITY
- PERPENDICULARITY (SQUARENESS)
- PARALLELISM
- ROUNDNESS (CIRCULARITY)
- CYLINDRICITY
- PROFILE OF ANY SURFACE
- PROFILE OF ANY LINE
- RUNOUT
- TRUE POSITION
- CONCENTRICITY
- SYMMETRY

ASME Y14.5M 1994

REGAL-BELOIT CORPORATION (RBC) PROVIDES TECHNICAL ASSISTANCE TO OUR CUSTOMERS IN SEVERAL AREAS. SINCE RBC DOES NOT RECEIVE ALL DATA CONCERNING THE USE AND APPLICATION OF THE MOTOR, THE SUITABILITY OF THE MOTOR FOR THE APPLICATION MUST BE DETERMINED BY THE CUSTOMER.

DIMENSIONS WITHOUT TOLERANCES ARE FOR REFERENCE ONLY.

DR BY: J.RUPERT 04-28-2003

APPD: J.RUPERT 04-28-2003

THIRD ANGLE PROJECTION

EDS DATE 11-11-2011  
 FORMAT REV H

CONFIDENTIAL: THIS DRAWING AND ITS INFORMATION ARE THE EXCLUSIVE AND CONFIDENTIAL PROPERTY OF REGAL-BELOIT CORPORATION AND ARE NOT TO BE DISCLOSED, DUPLICATED, DISTRIBUTED OR OTHERWISE USED WITHOUT THE WRITTEN CONSENT OF REGAL-BELOIT CORPORATION. -ALL RIGHTS RESERVED.

**REGAL REGAL-BELOIT CORPORATION**

DESCRIPTION: MODEL-RFHP-42FR OUTLINE

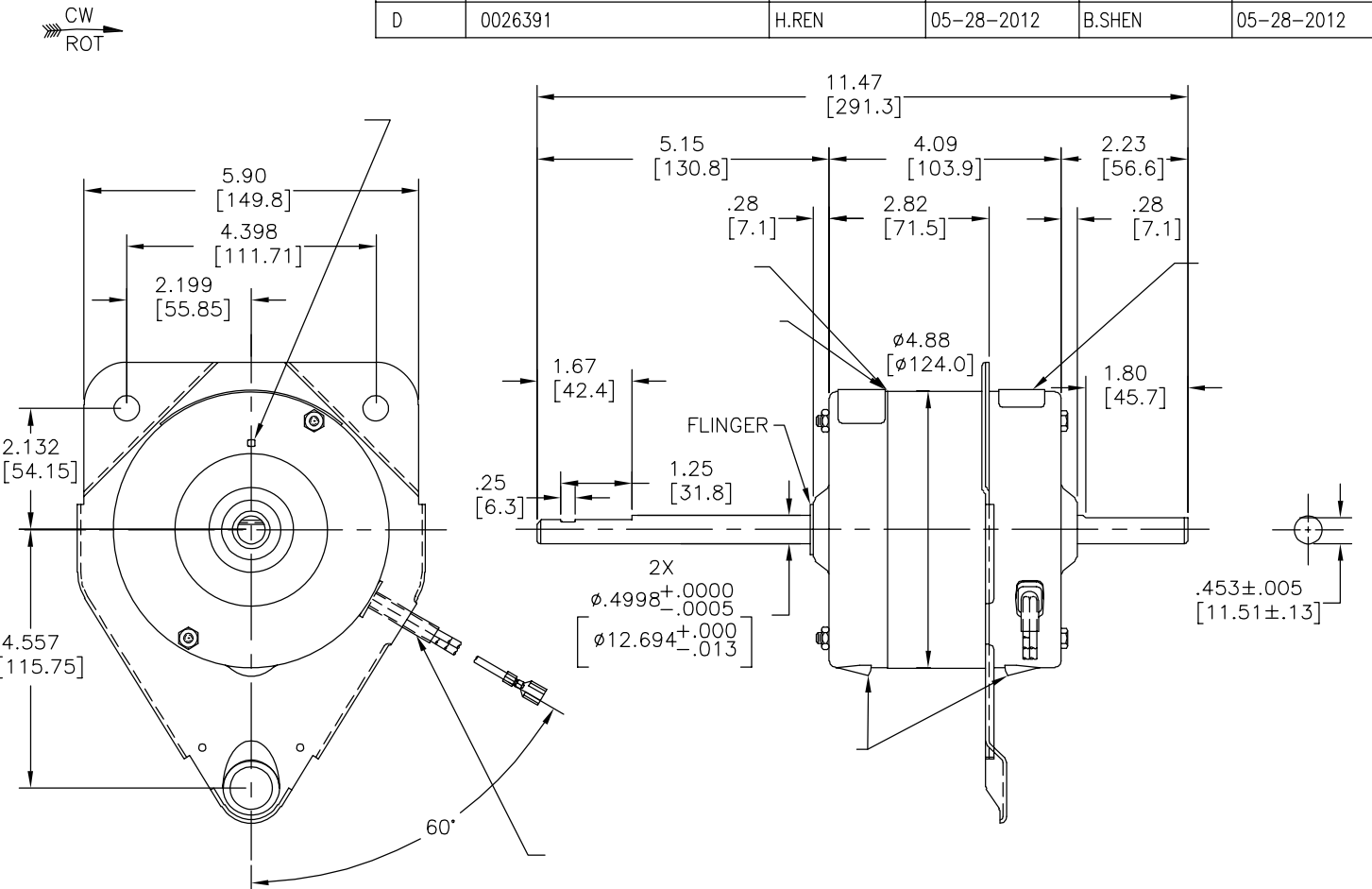
SIZE C DWG NO 11869-007

SCALE NONE SHEET 1

4 3 2 1

4 3 2 1

REVISION:	ECO	REVISADO POR:	FECHA:	APROBADO POR:	FECHA:
D	0026391	H.REN	05-28-2012	B.SHEN	05-28-2012



**INFORMACION GENERAL:**

OSCILACION DE FLECHA: -

JUEGO AXIAL: -

BALEROS: -

POSICION DEL MONTAJE: -

**INFORMACION ELECTRICA:**

PROTECTOR DE SOBRECARGA: -

CABLES: -

INFORMACION DE ETIQUETA:	DIAGRAMA DE CONEXION EXTRNA
MODEL NO.: 322P754 CUST. P/N: OWW4515 HP: 1/3 ROT.: CCWLE RPM: 1450/1350/1240 TYPE: FLL FRAME: 42Y VOLTS: 208/230 PH: 1 AMPS: 2.5 HZ: 60 INS.: A AMB.: 40° C DUTY: AIR COVER CAP.: 8-6 MFD/ 370V ENCL: - UL LOGO CSA LOGO THERMALLY PROTECTED TYPE C	

	22.5/24.5	
	[572/622]	
-	22.5/24.5	-
	[572/622]	
-	22.5/24.5	-
	[572/622]	
-	22.5/24.5	-
	[572/622]	
COLOR	LONGITUD	TERMINAL O LONGITUD DE DESFORRE

CARCASA - LOC	-
TAPA - LOC	-
CARCASA - LC	-
TAPA - LC	-

CLIENTE	DISTRIBUTION SERVICE
---------	----------------------

CURVAS DE FUNCIONAMIENTO	TORSION @1450 RPM (25°C)	MUESTRA APROBADA	COMPONENTE UL	CSA
C31090	22.6 OZ. FT.	322P401	#ARCHIVO PRGY2	LR43341 4211-01

**CARACTERISTICAS DE GEOMETRIA Y SIMBOLOS**

- PLANICIDAD
- RECTITUD
- ∠ ANGULARIDAD
- ⊥ PERPENDICULARIDAD (A ESCUADRA)
- // PARALELISMO
- REDONDEZ (CIRCULARIDAD)
- ⊘ CILINDRICIDAD
- △ PERFIL DE CUALQUIER SUPERFICIE
- ∩ PERFIL DE CUALQUIER LINEA
- ↑ VARIACION
- ⊕ POSICION REAL
- ◎ CONCENTRICIDAD
- = SIMETRIA

ASME Y14.5M 1994

REGAL-BELOIT CORPORATION (RBC) PROVEE ASISTENCIA TECNICA A NUESTROS CLIENTES EN VARIAS AREAS. DESDE QUE RBC NO RECIBE TODOS LOS DATOS EN RELACION AL USO Y A LA APLICACION DEL MOTOR, LA APLICACION ADECUADA DEL MOTOR DEBE SER DETERMINADA POR EL CLIENTE.

DIMENSIONES SIN TOLERANCIA SON DE REFERENCIA SOLAMENTE

DIBUJADO POR: J.RUPERT 04-28-2003

APROBADO POR: J.RUPERT 04-28-2003

TERCER ANGULO DE PROYECCION

FECHA EDS: 11-11-2011

REV. FORMATO: H

CONFIDENCIAL: ESTE DIBUJO Y SU INFORMACION SON PROPIEDAD DE USO EXCLUSIVO Y CONFIDENCIAL DE REGAL-BELOIT CORPORATION. Y NO DEBERAN SER REVELADOS, DUPLICADOS, DISTRIBUIDOS O USARSE DE OTRA MANERA SIN EL CONSENTIMIENTO ESCRITO DE REGAL-BELOIT CORPORATION. -TODOS LOS DERECHOS RESERVADOS.

**REGAL REGAL-BELOIT CORPORATION**

DESCRIPCION: MODEL-RFHP-42FR OUTLINE

TAMAÑO: C NUMERO DE DIBUJO: 11869-007

ESCALA: NONE HOJA: 1

4 3 2 1

4 3 2 1

总技术要求:

轴跳动:

端部窜动量

轴承:

安装位置:

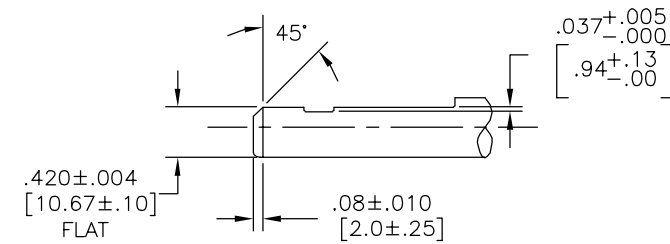
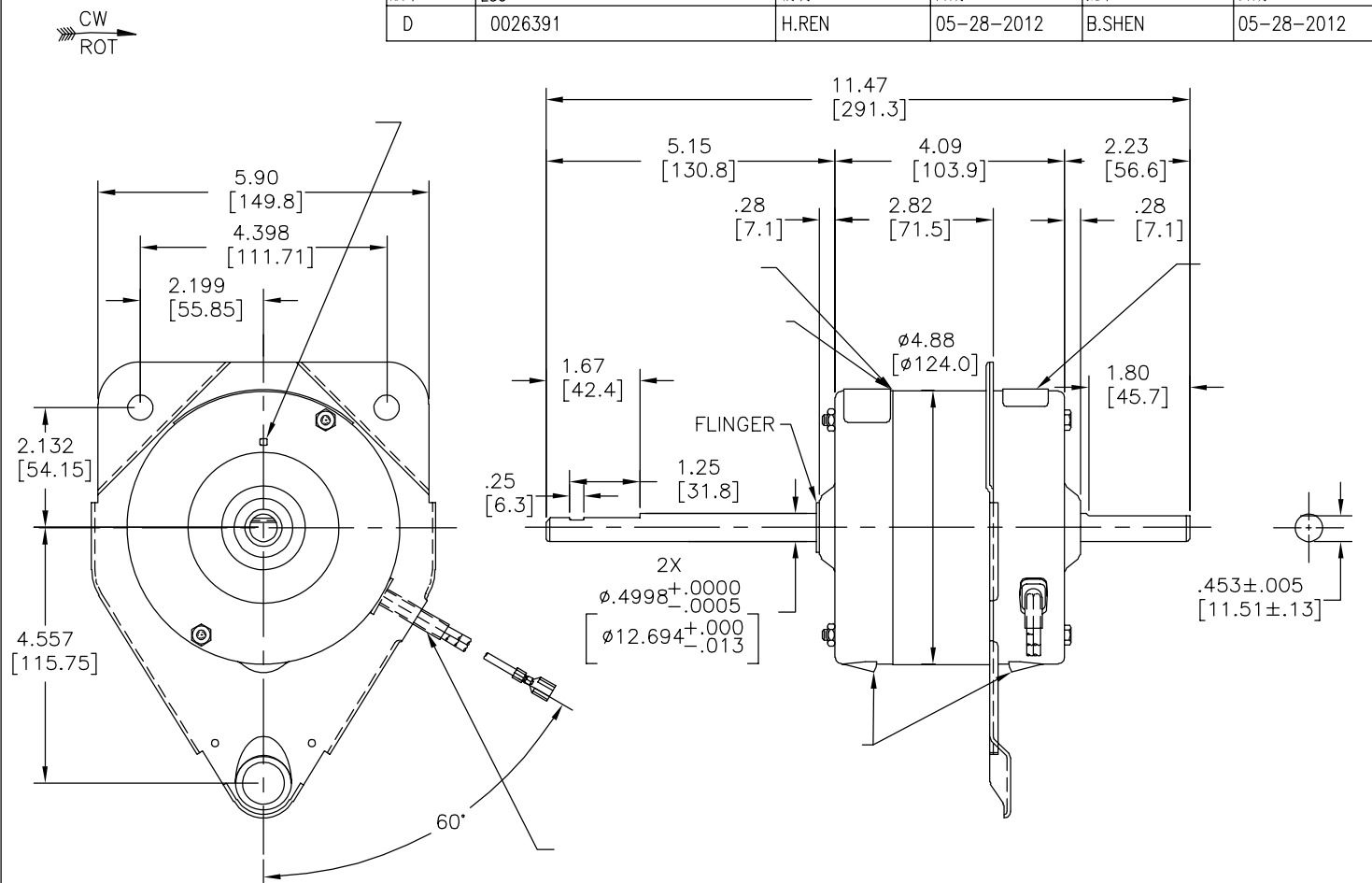
电气数据:

过载保护:

引线:

接地线:

版本	ECO	编制	日期	批准	日期
D	0026391	H.REN	05-28-2012	B.SHEN	05-28-2012



22.5/24.5	[572/622]	
22.5/24.5	[572/622]	
22.5/24.5	[572/622]	
22.5/24.5	[572/622]	
22.5/24.5	[572/622]	
22.5/24.5	[572/622]	
22.5/24.5	[572/622]	

颜色	长度	端子或剥线长度

无引线端机壳	
无引线端端盖	
有引线端机壳	
有引线端端盖	

用户	DISTRIBUTION SERVICE
----	----------------------

铭牌数据	外部数据线
MODEL NO.: 322P754 CUST. P/N: OWW4515 HP: 1/3 ROT.: CCWLE RPM: 1450/1350/1240 TYPE: FLL FRAME: 42Y VOLTS: 208/230 PH: 1 AMPS: 2.5 HZ: 60 INS.: A AMB.: 40° C DUTY: AIR COVER CAP.: 8-6 MFD/ 370V ENCL: - UL LOGO CSA LOGO THERMALLY PROTECTED TYPE C	

性能曲线编号	转矩在 @ --- RPM (25° C)	批准样品	UL部件		CSA	
C31090	22.6 OZ. FT.	322P401	文件号	指南	文件号	指南
			E46412	PRGY2	LR43341	4211-01

- 形位公差
- 平面度
- 直线度
- ∠ 倾斜度
- ⊥ 垂直度
- ∥ 平行度
- 圆度
- ⊙ 圆柱度
- ⊖ 面轮廓度
- ⊖ 线轮廓度
- ⊖ 圆跳动
- ⊖ 位置度
- ⊖ 同轴度
- ⊖ 对称度

ASME Y14.5M 1994

REGAL-BELOIT CORPORATION (RBC) 在个别领域为客户提供技术支持。鉴于RBC未收到任何涉及电机使用和应用环境的数据，电机的适用性由客户自己决定。

未注公差尺寸仅供参考。

绘图:	J.RUPERT	04-28-2003
批准:	J.RUPERT	04-28-2003

第三角投影		图纸格式发布日期 11-11-2011
		图纸格式版本 H

机密: 本图纸及相关信息所有权归REGAL-BELOIT CORPORATION。未经REGAL-BELOIT CORPORATION书面授权, 不得泄露、复制、传播或作其他用途。--版权所有



名称 MODEL-RFHP-42FR OUTLINE

图幅	C	图号	11869-007
比例	NONE	页号	1

4 3 2 1