

# PRODUCT INFORMATION PACKET



Model No: P126

Catalog No: P126

1.0 HP Close-Coupled Pump Motor, 1 phase, 1800 RPM, 230/115 V, 143JP Frame, ODP  
Close-Coupled Pump Motors



Regal and Century are trademarks of Regal Rexnord Corporation or one of its affiliated companies.  
©2021 Regal Rexnord Corporation, All Rights Reserved. MC017097E





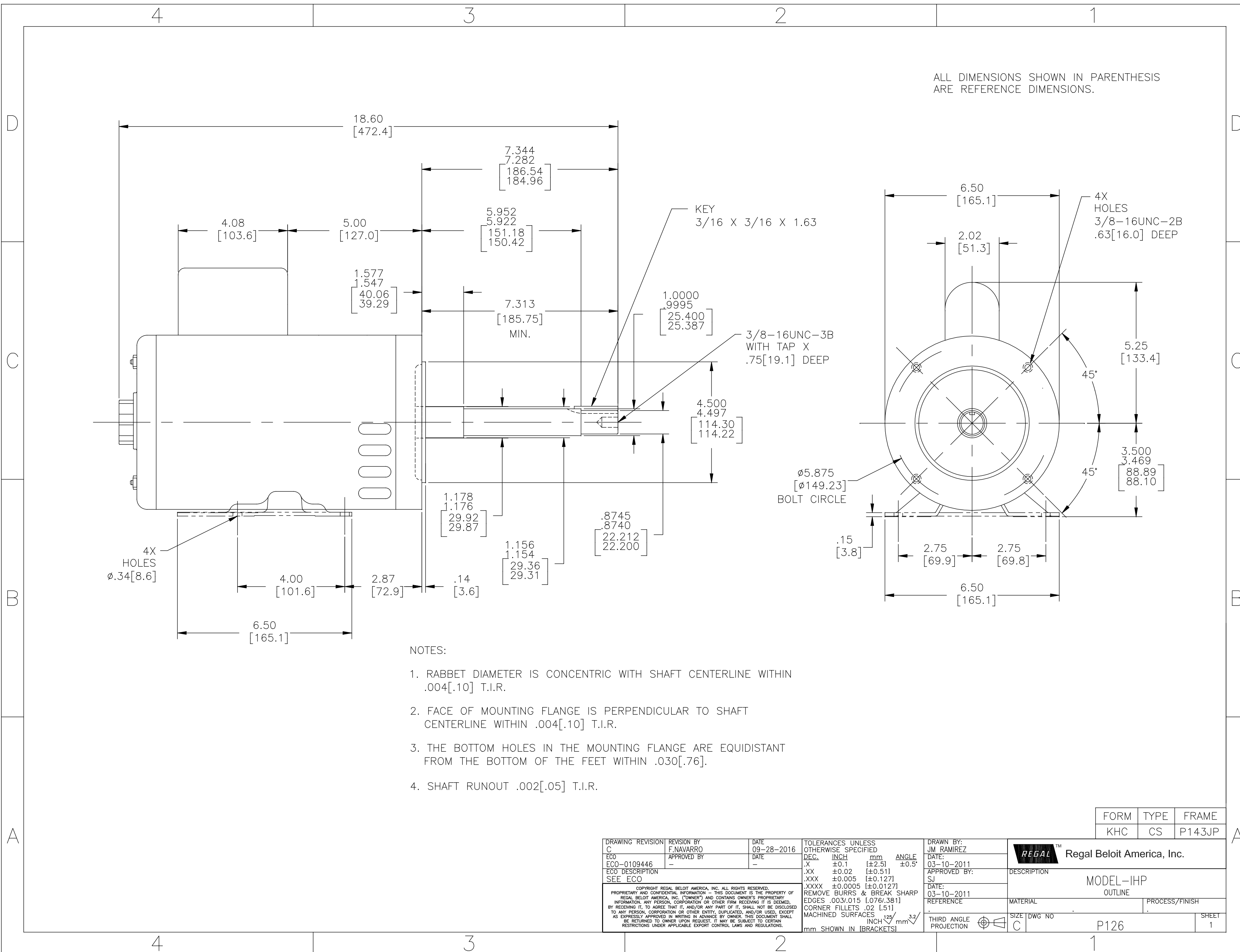
### Nameplate Specifications

Output HP	1.0 Hp	Output KW	0.75 kW
Frequency	60 Hz	Voltage	230/115 V
Current	7.5/15.0 A	Speed	1745 rpm
Service Factor	1.15	Phase	1
Duty	Continuous	Insulation Class	B
Frame	P143JP	Enclosure	Drip Proof
Thermal Protection	None	Ambient Temperature	40 °C
UL	Recognized	CSA	Y
Number of Speeds	1		

### Technical Specifications

Electrical Type	Capacitor Start, Induction Run, Single Or Dual Voltage	Starting Method	Across The Line
Poles	4	Rotation	Reversible Counterclockwise
Mounting	Rigid Base	Drive End Bearing	Ball
Opp Drive End Bearing	Ball	Frame Material	Rolled Steel
Shaft Type	JP	Overall Length	18.60 in
Frame Length	8.00 in	Shaft Diameter	1.156 in
Shaft Extension	7.34 in		
Outline Drawing	P126-S01	Connection Drawing	17050320.PCX

This is an uncontrolled document once printed or downloaded and is subject to change without notice. Date Created:10/07/2021



FORM	TYPE	FRAME
KHC	CS	P143JP

DRAWING REVISION C	REVISION BY F.NAVARRO	DATE 09-28-2016	TOLERANCES UNLESS OTHERWISE SPECIFIED DEC. INCH mm ANGLE .X ±0.1 [±2.5] ±0.5° .XX ±0.02 [±0.51] .XXX ±0.005 [±0.127] .XXXX ±0.0005 [±0.0127]	DRAWN BY: JM RAMIREZ	Regal Beloit America, Inc.	
ECO ECO-0109446	APPROVED BY -	DATE -	REMOVE BURRS & BREAK SHARP EDGES .003/.015 [0.076/.381] CORNER FILLETS .02 [51] MACHINED SURFACES 125/INCH 3.2/mm	DATE: 03-10-2011		
ECO DESCRIPTION SEE ECO	<small>COPYRIGHT REGAL BELOIT AMERICA, INC. ALL RIGHTS RESERVED. PROPRIETARY AND CONFIDENTIAL INFORMATION - THIS DOCUMENT IS THE PROPERTY OF REGAL BELOIT AMERICA, INC. (OWNER) AND CONTAINS OWNER'S PROPRIETARY INFORMATION. ANY PERSON, CORPORATION OR OTHER FIRM RECEIVING IT IS DEEMED, BY RECEIVING IT, TO AGREE THAT IT, AND/OR ANY PART OF IT, SHALL NOT BE DISCLOSED TO ANY PERSON, CORPORATION OR OTHER ENTITY, DUPLICATED, AND/OR USED, EXCEPT AS EXPRESSLY APPROVED IN WRITING IN ADVANCE BY OWNER. THIS DOCUMENT SHALL BE RETURNED TO OWNER UPON REQUEST. IT MAY BE SUBJECT TO CERTAIN RESTRICTIONS UNDER APPLICABLE EXPORT CONTROL LAWS AND REGULATIONS.</small>			APPROVED BY: SJ	DESCRIPTION MODEL-IHP OUTLINE	
				DATE: 03-10-2011	MATERIAL	PROCESS/FINISH
				REFERENCE	SIZE DWG NO C P126	SHEET 1