

PRODUCT INFORMATION PACKET



Model No: P140
Catalog No: P140

Close-Coupled Pump Motor, 5.0 HP, 1 Ph, 60 Hz, 230 V, 3600 RPM, Y184JM Frame, DP



Regal and Century are trademarks of Regal Rexnord Corporation or one of its affiliated companies.
©2023 Regal Rexnord Corporation, All Rights Reserved. MC017097E





Nameplate Specifications

Phase	1	Output HP	5.0 Hp
Output KW	3.7 kW	Voltage	230 V
Speed	3450 rpm	Service Factor	1.15
Frame	Y184JM	Enclosure	Drip Proof
Thermal Protection	No Protection	Ambient Temperature	40 °C
Frequency	60 Hz	Current	20.0 A
Duty	Continuous	Insulation Class	B
UL	No	CSA	Y
CE	N	Number of Speeds	1

Technical Specifications

Electrical Type	Capacitor Start, Capacitor Run, Single Or Dual Voltage	Starting Method	Across The Line
Poles	2	Rotation	Clockwise
Mounting	Rigid Base	Drive End Bearing	Ball
Opp Drive End Bearing	Ball	Frame Material	Rolled Steel
Shaft Type	Keyed	Overall Length	17.12 in
Frame Length	9.00 in	Shaft Diameter	1.250 in
Shaft Extension	4.28 in		
Outline Drawing	188278-S01	Connection Drawing	18357101

This is an uncontrolled document once printed or downloaded and is subject to change without notice. Date Created:09/27/2023

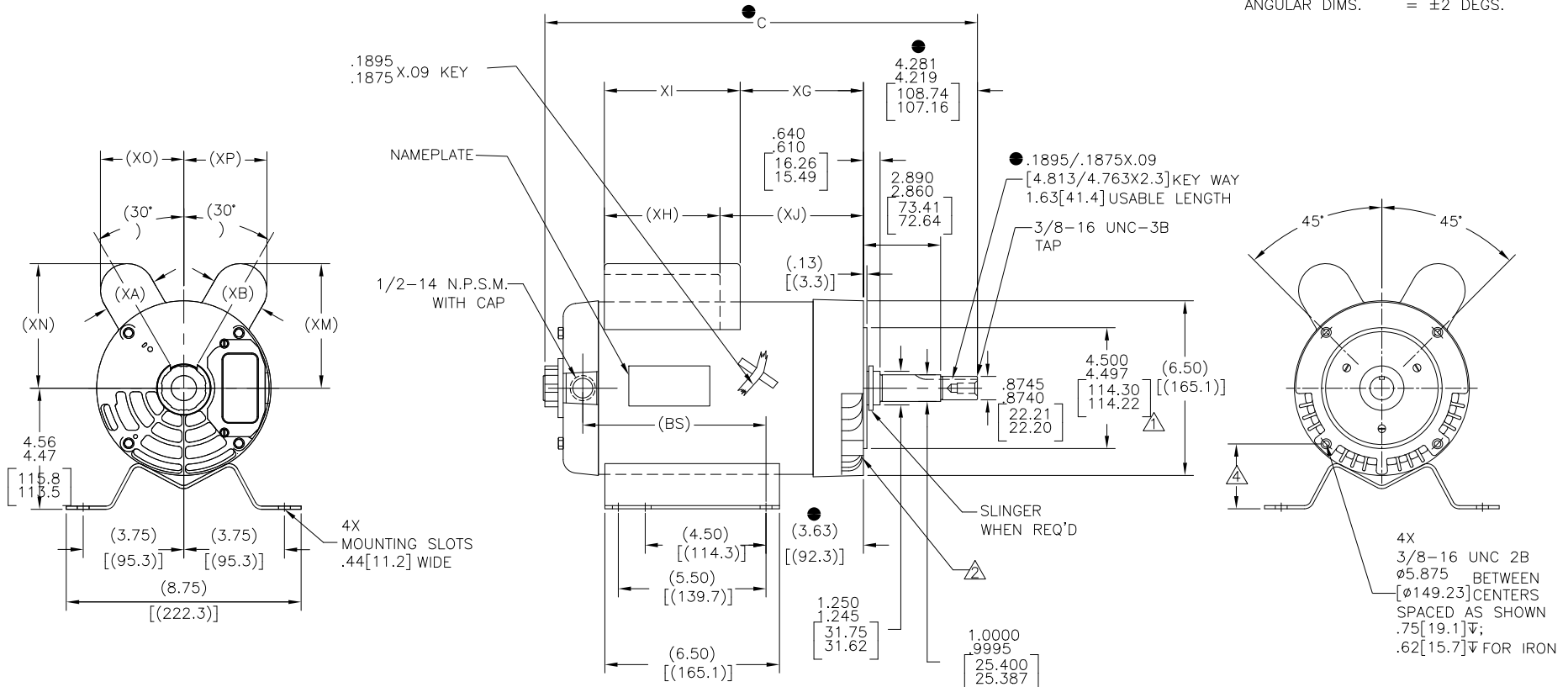
GROUP	TYPE	FRAME	C	(BS)	(XA)	(XB)	(XG)	(XH)	(XM)	(XN)	(XO)	(XP)	(XI)	(XJ)
188278-01	CP	P182JM	16.12[409.4]	6.80[172.7]	2.01[51.1]	2.01[51.1]	4.60[116.8]	5.06[128.5]	4.64[117.9]	4.64[117.9]	3.10[78.7]	3.10[78.7]	---	---
188278-02	CP	Y184JM	17.12[434.8]	7.80[198.1]	2.27[57.7]	2.08[52.8]	5.55[141.0]	5.30[134.6]	4.64[117.9]	4.92[125.0]	3.32[84.3]	3.10[78.7]	5.09[129.3]	5.34[135.6]

NOTES:

1. PILOT DIAMETER IS CONCENTRIC WITH SHAFT CENTER LINE WITHIN .004[0.10] T.I.R.;
2. FACE OF MOUNTING FLANGE IS PERPENDICULAR TO SHAFT CENTERLINE WITHIN .004[0.10] T.I.R.;
3. SHAFT RUNOUT NOT TO EXCEED .002[0.05] T.I.R.;
4. FOR RIGID BASE ONLY: THE 2 BOTTOM HOLES IN THE MOUNTING FLANGE ARE PARALLEL FROM THE BOTTOM OF THE FEET WITHIN .030[0.76];
5. END PLAY NOT TO EXCEED .010[0.25] MEASURED WITH NO THRUST;

ALL DIMENSION SHOWN IN PARENTHESIS ARE REFERENCE DIMENSIONS. ALL OTHER DIMENSIONS ARE TOLERANCED PER THE FOLLOWING CHART UNLESS OTHERWISE SPECIFIED.

"C" DIM.	= ±.055[±1.40]
SHAFT EXT.	= ±.034[±.86]
LEAD LENGTHS	= ±1.00[±25.4]
EXTENDED	
THRU-BOLTS	= ±.050[±1.27]
ANGULAR DIMS.	= ±2 DEGS.



DRAWING REVISION: H	REVISION BY: SHESH	DATE: 08/05/2021	TOLERANCES UNLESS OTHERWISE SPECIFIED	DRAWN BY: SVR	
ECO: ECR-0211578	APPROVED BY: SACHIN	DATE: 08/05/2021	DEC. INCH mm ANGLE	DATE: 07-23-1996	
ECO DESCRIPTION: UPDATED PER ECR-0211578			.X ±0.1 [±2.5]	APPROVED BY: SAS	DESCRIPTION: OUTLINE
<small> COPYRIGHT REGAL BELOIT AMERICA, INC. ALL RIGHTS RESERVED. PROPRIETARY AND CONFIDENTIAL INFORMATION - THIS DOCUMENT IS THE PROPERTY OF REGAL BELOIT AMERICA, INC. (OWNER) AND CONTAINS OWNER'S PROPRIETARY INFORMATION. ANY PERSON, CORPORATION OR OTHER ENTITY, DUPLICATED, AND/OR USED EXCEPT BY RECEIVING IT TO AGREE THAT IT, AND/OR ANY PART OF IT, SHALL NOT BE DISCLOSED TO ANY PERSON, CORPORATION OR OTHER ENTITY, DUPLICATED, AND/OR USED EXCEPT AS EXPRESSLY APPROVED IN WRITING IN ADVANCE BY OWNER. THIS DOCUMENT SHALL BE RETURNED TO OWNER UPON REQUEST. IT MAY BE SUBJECT TO CERTAIN RESTRICTIONS UNDER APPLICABLE EXPORT CONTROL LAWS AND REGULATIONS. </small>			.XX ±0.02 [±0.51]	DATE: 07-23-1996	MATERIAL: -
			.XXX ±0.005 [±0.127]	REFERENCE: -	PROCESS/FINISH: -
			REMOVE BURRS & BREAK SHARP EDGES .003/.015 [0.076/.381]	THIRD ANGLE PROJECTION	SIZE: C
			CORNER FILLETS .02 [51]	SIZE: C	DWG NO: 188278
			MACHINED SURFACES: .125 INCH / mm 3/2	SHEET: 1	