

PRODUCT INFORMATION PACKET



Model No: PD6104AV3
Catalog No: PD6104AV3
Poultry Fan Motor, 1.0 HP, 1 Ph, 60/50 Hz, 115/230 V, 1800 RPM, 56 Frame, TEAO



Regal and Century are trademarks of Regal Rexnord Corporation or one of its affiliated companies.
©2025 Regal Rexnord Corporation, All Rights Reserved. MC017097E





Nameplate Specifications

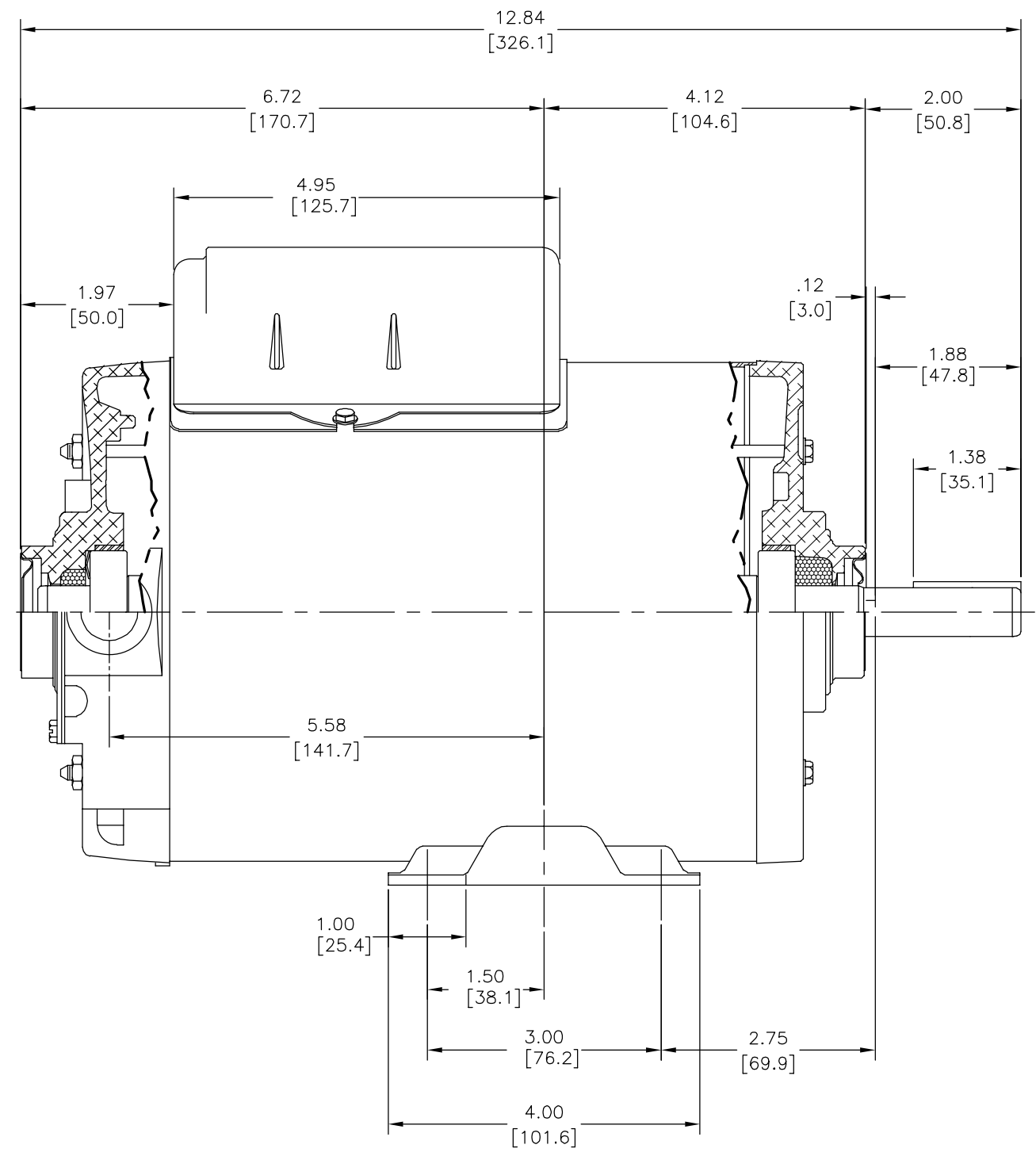
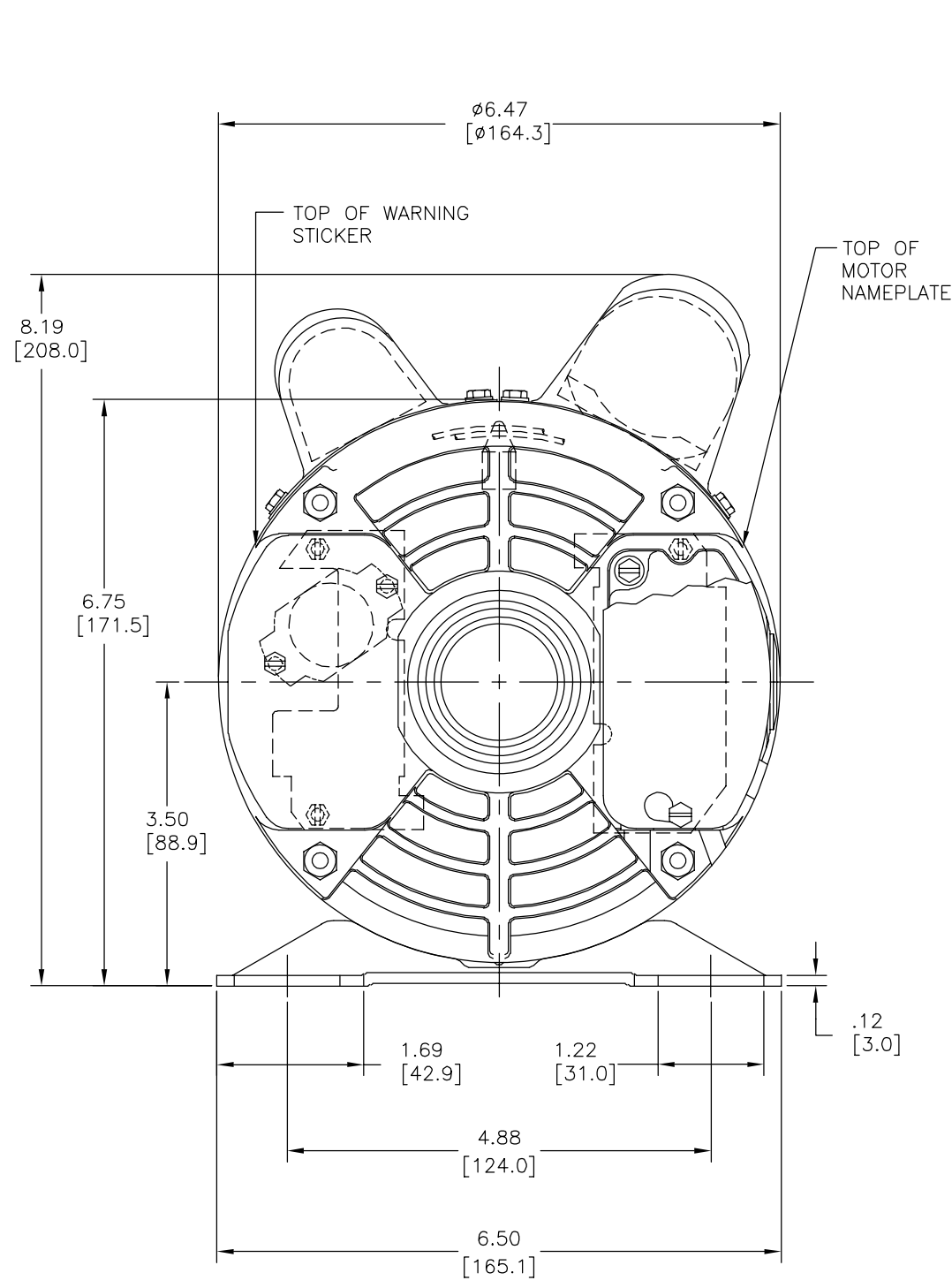
Phase	1	Output HP	1.0 Hp
Output KW	0.75 kW	Voltage	115/230 V
Speed	1725/1425 rpm	Service Factor	1.30
Frame	56	Enclosure	Totally Enclosed Air Over
Thermal Protection	Automatic	Ambient Temperature	40 °C
Frequency	60/50 Hz	Current	9.0/4.5 A
Duty	Continuous	Insulation Class	B
UL	Recognized	CSA	Y
CE	N	Number of Speeds	1

Technical Specifications

Electrical Type	Capacitor Start Capacitor Run	Starting Method	Across The Line
Poles	4	Rotation	Reversible
Mounting	Rigid Base	Drive End Bearing	Ball
Opp Drive End Bearing	Ball	Frame Material	Rolled Steel
Shaft Type	Keyed	Overall Length	12.84 in
Frame Length	7.69 in	Shaft Diameter	0.625 in
Shaft Extension	2.00 in		
Outline Drawing	PD6104AV3-S01	Connection Drawing	620005-009-S01

This is an uncontrolled document once printed or downloaded and is subject to change without notice. Date Created:06/18/2025

REV	ECO	REV BY	DATE	APPD	DATE
D	ECO-0024913	J. COX	03-14-2012	JC	03-14-2012



GEOMETRIC CHARACTERISTICS & SYMBOLS

- FLATNESS
- STRAIGHTNESS
- ANGULARITY
- PERPENDICULARITY (SQUARENESS)
- PARALLELISM
- ROUNDNESS (CIRCULARITY)
- CYLINDRICITY
- PROFILE OF ANY SURFACE
- PROFILE OF ANY LINE
- RUNOUT
- TRUE POSITION
- CONCENTRICITY
- SYMMETRY

ASME Y14.5M 1994

UNLESS OTHERWISE SPECIFIED DIM. TOLERANCES ARE AS FOLLOWS:

INCH	.1	.02	.005	.0005
mm	±0.5	±0.13	±0.013	

ANG. ±.50 DEG
REMOVE BURRS & BREAK SHARP EDGES:
INCH .003-.015 mm 0.1-0.4
CORNER FILLETS TO:
INCH .020 mm 0.5
MACHINE SURFACES:
INCH 125 mm 3.2

METRIC DIMS. SHOWN IN [BRACKETS]

DR BY: SLB 05-13-2009

APPD: TC 05-13-2009

EDS DATE 11-11-2011
FORMAT REV G

THIRD ANGLE PROJECTION

CONFIDENTIAL: THIS DRAWING AND ITS INFORMATION ARE THE EXCLUSIVE AND CONFIDENTIAL PROPERTY OF REGAL-BELOIT CORPORATION AND ARE NOT TO BE DISCLOSED, DUPLICATED, DISTRIBUTED OR OTHERWISE USED WITHOUT THE WRITTEN CONSENT OF REGAL-BELOIT CORPORATION. -ALL RIGHTS RESERVED.

REGAL-BELOIT CORPORATION

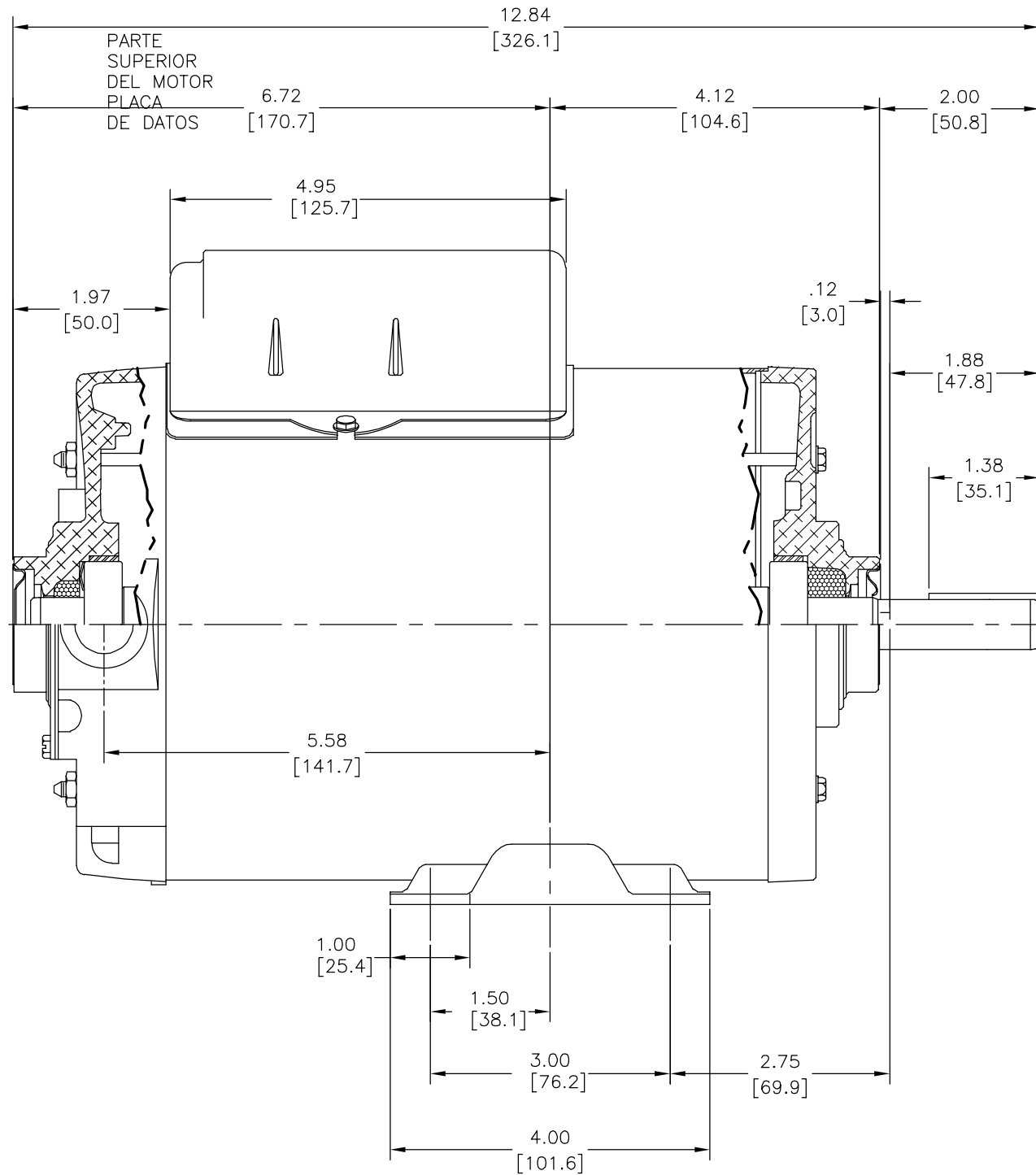
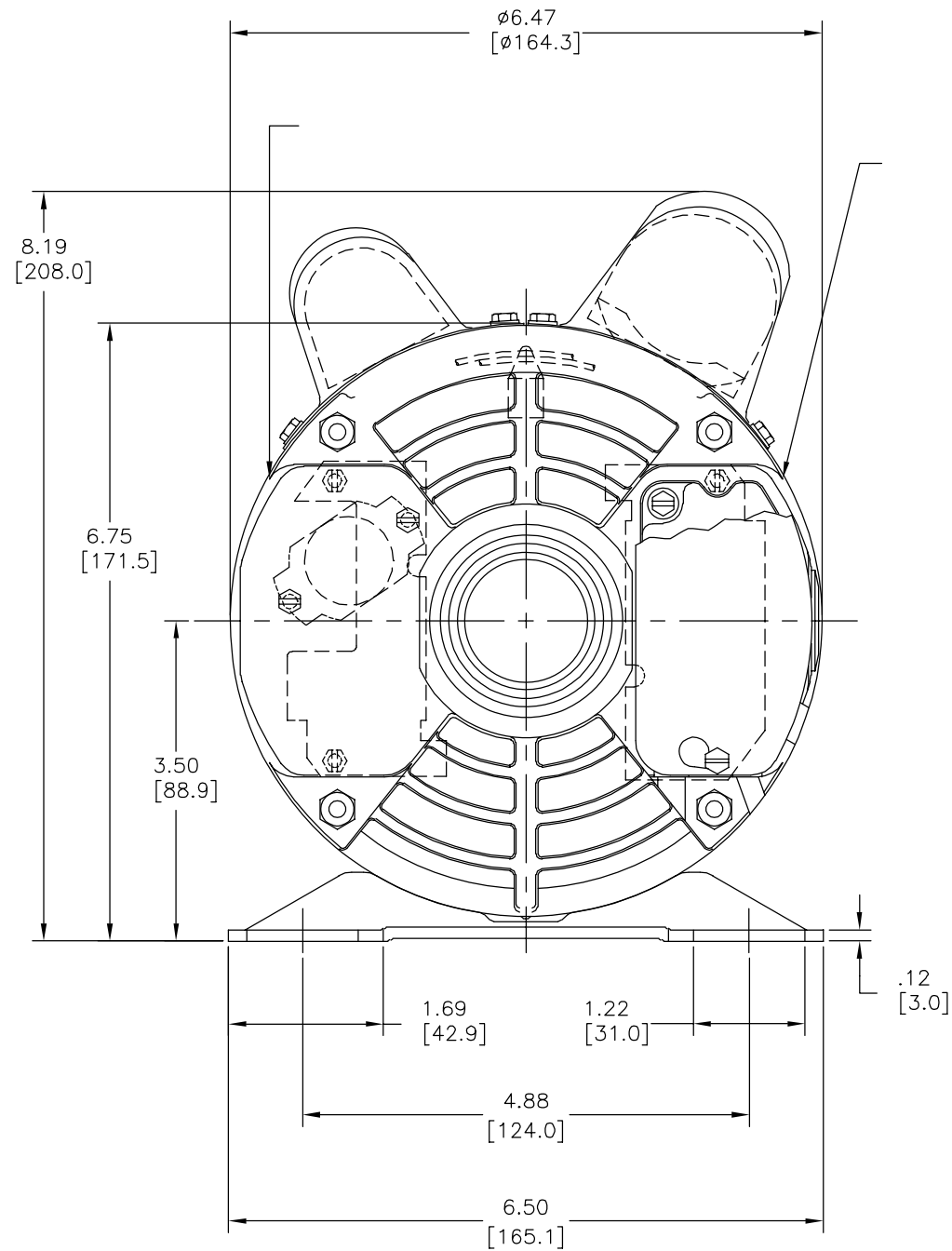
DESCRIPTION: MODEL-CFHP-56FR OUTLINE

SIZE C DWG NO PD6104AV3

SCALE NONE SHEET 1

REVISION:	ECO	REVISADO POR:	FECHA:	APROBADO POR:	FECHA:
D	ECO-0024913	J. COX	03-14-2012	JC	03-14-2012

PARTE SUPERIOR DELA ETIQUETA ADHESIVA DE ADVERTENCIA



CARACTERISTICAS DE GEOMETRIA Y SIMBOLOS

- ∠ PLANICIDAD
- RECTITUD
- ∠ ANGULARIDAD
- ⊥ PERPENDICULARIDAD (A ESQUADRA)
- // PARALELISMO
- REDONDEZ (CIRCULARIDAD)
- ⊘ CILINDRICIDAD
- △ PERFIL DE CUALQUIER SUPERFICIE
- ∧ PERFIL DE CUALQUIER LINEA
- ∩ VARIACION
- ⊕ POSICION REAL
- ◎ CONCENTRICIDAD
- = SIMETRIA

ASME Y14.5M 1994

A MENOS QUE SE ESPECIFIQUE DE OTRA MANERA, LAS TOLERANCIAS DE LAS DIMS; SON LAS SIGUIENTES:

PULG	±.1	±.02	±.005	±.0005
mm	±0.5	±0.13	±0.013	

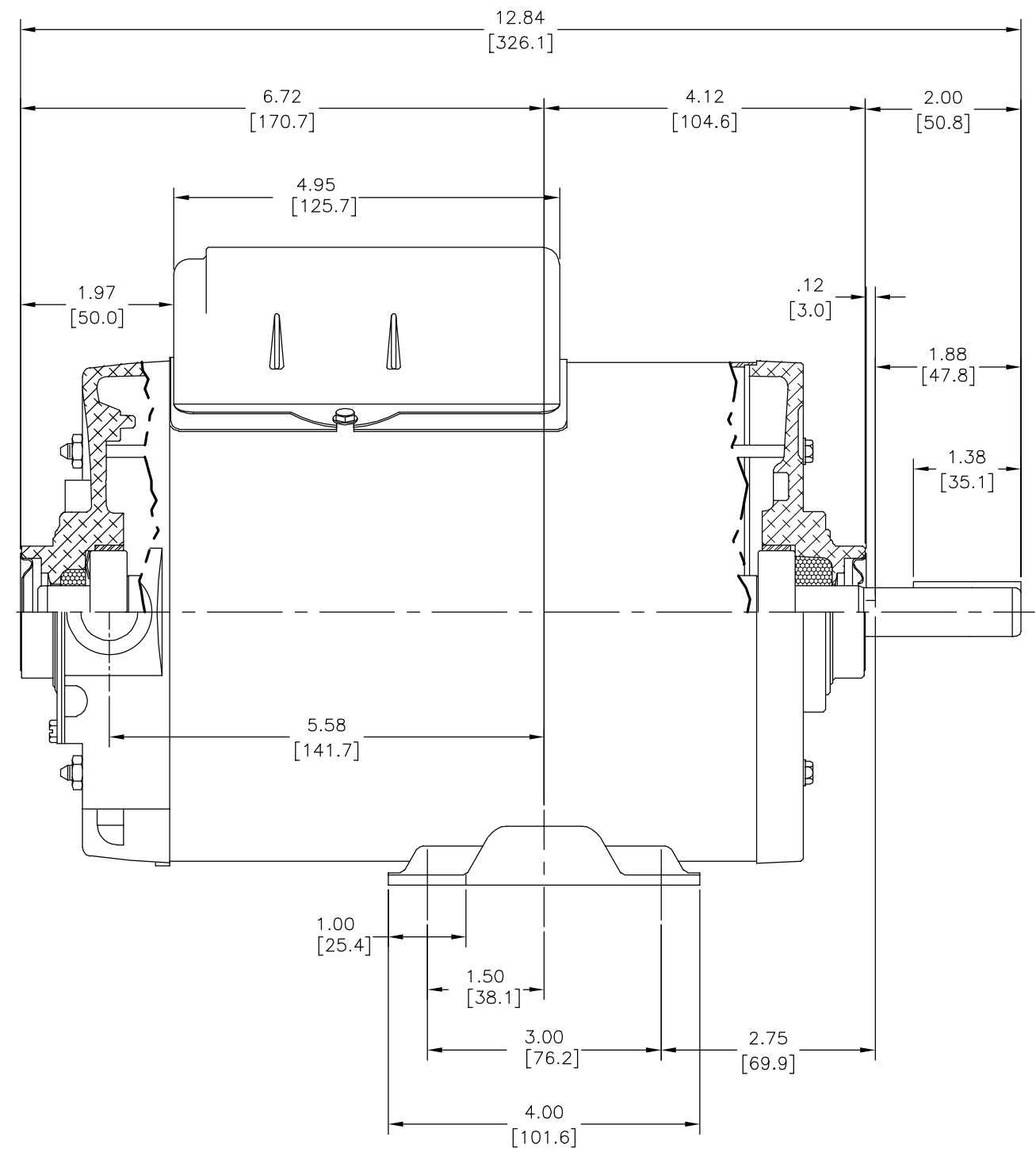
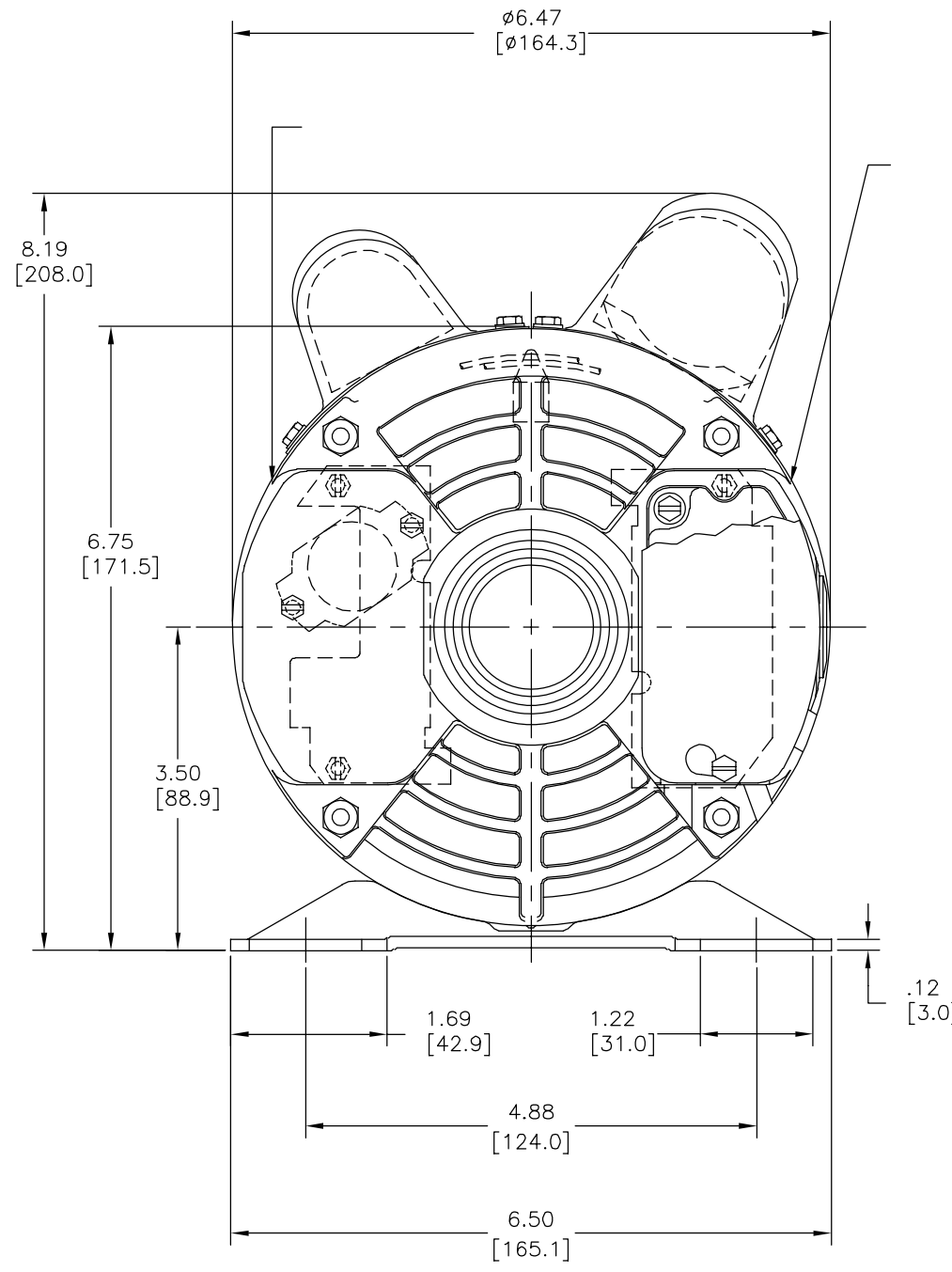
ANG. ± 50 GRADOS
ELIMINAR REBABAS Y ORILLAS FILOSAS DEL BORDE.
PULG .003-.015 mm 0.1-0.4
FILETEAR ESQUINA: PULG .020 mm 0.5
MAQUINAR SUPERFICIES
PULG 125 mm 3.2

DIMS METRICAS MOSTRADAS [PARENTESIS]

DIBUJADO POR:	SLB	05-13-2009
APROBADO POR:	TC	05-13-2009
TERCER ANGULO DE PROYECCION	⊕	FECHA EDS: 11-11-2011 REV. FORMATO: G
CONFIDENCIAL: ESTE DIBUJO Y SU INFORMACION SON PROPIEDAD DE USO EXCLUSIVO Y CONFIDENCIAL DE REGAL-BELOIT CORPORATION. Y NO DEBERAN SER REVELADOS, DUPLICADOS, DISTRIBUIDOS O USARSE DE OTRA MANERA SIN EL CONSENTIMIENTO ESCRITO DE REGAL-BELOIT CORPORATION. -TODOS LOS DERECHOS RESERVADOS.		

DESCRIPCION:	
MODEL-CFHP-56FR OUTLINE	
TAMAÑO: C	NUMERO DE DIBUJO: PD6104AV3
ESCALA: NONE	HOJA: 1

版本	ECO	编制	日期	批准	日期
D	ECO-0024913	J. COX	03-14-2012	JC	03-14-2012



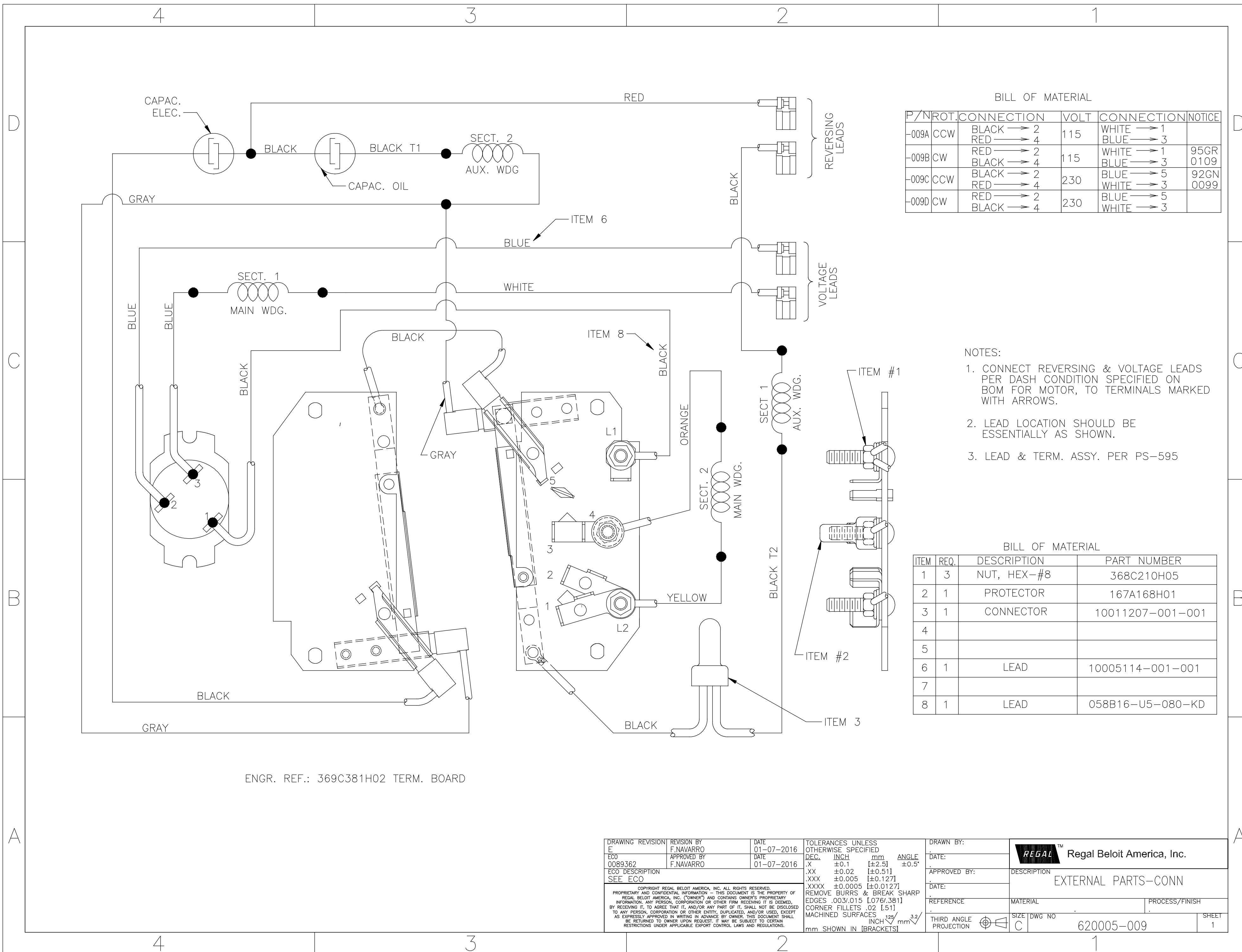
形位公差	除另有注明
□ 平面度	尺寸公差如下:
— 直线度	英寸 X XX XXX XXXX
∠ 倾斜度	英寸 ±.1 ±.02 ±.005 ±.0005
⊥ 垂直度	毫米 ±0.5 ±0.13 ±0.013
// 平行度	角度 ±.50 度
○ 圆度	清理毛刺和尖棱
⊘ 圆柱度	英寸 .003-.015 毫米 0.1-0.4
△ 面轮廓度	内圆角
∇ 线轮廓度	英寸 .020 毫米 0.5
↗ 圆跳动	表面粗糙度
⊕ 位置度	英制 125 米制 3.2
◎ 同轴度	米制尺寸显示在 []
≡ 对称度	

ASME Y14.5M 1994

绘图:	SLB	05-13-2009
批准:	TC	05-13-2009
第三角投影		图纸格式发布日期 11-11-2011 图纸格式版本 G
机密: 本图纸及相关信息所有权归REGAL-BELOIT CORPORATION 未经REGAL-BELOIT CORPORATION书面授权, 不得泄露、 复制、传播或作其他用途。—版权所有		



名称	MODEL-CFHP-56FR OUTLINE	
图幅	C	图号 PD6104AV3
比例	NONE	页号 1



BILL OF MATERIAL

P/N	ROT.	CONNECTION	VOLT	CONNECTION	NOTICE
-009A	CCW	BLACK → 2 RED → 4	115	WHITE → 1 BLUE → 3	
-009B	CW	RED → 2 BLACK → 4	115	WHITE → 1 BLUE → 3	95GR 0109
-009C	CCW	BLACK → 2 RED → 4	230	BLUE → 5 WHITE → 3	92GN 0099
-009D	CW	RED → 2 BLACK → 4	230	BLUE → 5 WHITE → 3	

- NOTES:
1. CONNECT REVERSING & VOLTAGE LEADS PER DASH CONDITION SPECIFIED ON BOM FOR MOTOR, TO TERMINALS MARKED WITH ARROWS.
 2. LEAD LOCATION SHOULD BE ESSENTIALLY AS SHOWN.
 3. LEAD & TERM. ASSY. PER PS-595

BILL OF MATERIAL

ITEM	REQ.	DESCRIPTION	PART NUMBER
1	3	NUT, HEX-#8	368C210H05
2	1	PROTECTOR	167A168H01
3	1	CONNECTOR	10011207-001-001
4			
5			
6	1	LEAD	10005114-001-001
7			
8	1	LEAD	058B16-U5-080-KD

ENGR. REF.: 369C381H02 TERM. BOARD

DRAWING REVISION E	REVISION BY F.NAVARRO	DATE 01-07-2016	TOLERANCES UNLESS OTHERWISE SPECIFIED DEC. INCH mm ANGLE .X ±0.1 [±2.5] ±0.5° .XX ±0.02 [±0.51] .XXX ±0.005 [±0.127] .XXXX ±0.0005 [±0.0127]	DRAWN BY:	REGAL ™ Regal Beloit America, Inc.
ECO 0089362	APPROVED BY F.NAVARRO	DATE 01-07-2016	REMOVE BURRS & BREAK SHARP EDGES .003/.015 [0.076/.381] CORNER FILLETS .02 [.51] MACHINED SURFACES 125/INCH 3.2/mm	DATE:	
ECO DESCRIPTION SEE ECO			THIRD ANGLE PROJECTION	APPROVED BY:	DESCRIPTION EXTERNAL PARTS-CONN
<small>COPYRIGHT REGAL BELOIT AMERICA, INC. ALL RIGHTS RESERVED. PROPRIETARY AND CONFIDENTIAL INFORMATION - THIS DOCUMENT IS THE PROPERTY OF REGAL BELOIT AMERICA, INC. (OWNER) AND CONTAINS OWNER'S PROPRIETARY INFORMATION. ANY PERSON, CORPORATION OR OTHER FIRM RECEIVING IT IS DEEMED, BY RECEIVING IT, TO AGREE THAT IT, AND/OR ANY PART OF IT, SHALL NOT BE DISCLOSED TO ANY PERSON, CORPORATION OR OTHER ENTITY, DUPLICATED, AND/OR USED, EXCEPT AS EXPRESSLY APPROVED IN WRITING IN ADVANCE BY OWNER. THIS DOCUMENT SHALL BE RETURNED TO OWNER UPON REQUEST. IT MAY BE SUBJECT TO CERTAIN RESTRICTIONS UNDER APPLICABLE EXPORT CONTROL LAWS AND REGULATIONS.</small>			REFERENCE	DATE:	MATERIAL
			SIZE DWG NO C 620005-009	PROCESS/FINISH	SHEET 1