

PRODUCT INFORMATION PACKET



Model No: Q3052

Catalog No: Q3052

Pool Pump Motor, 1/2 HP, 3 Ph, 60 Hz, 208-230/460 V, 3600 RPM, 48Y Frame, ODP



Regal and Century are trademarks of Regal Rexnord Corporation or one of its affiliated companies.
©2022 Regal Rexnord Corporation, All Rights Reserved. MC017097E





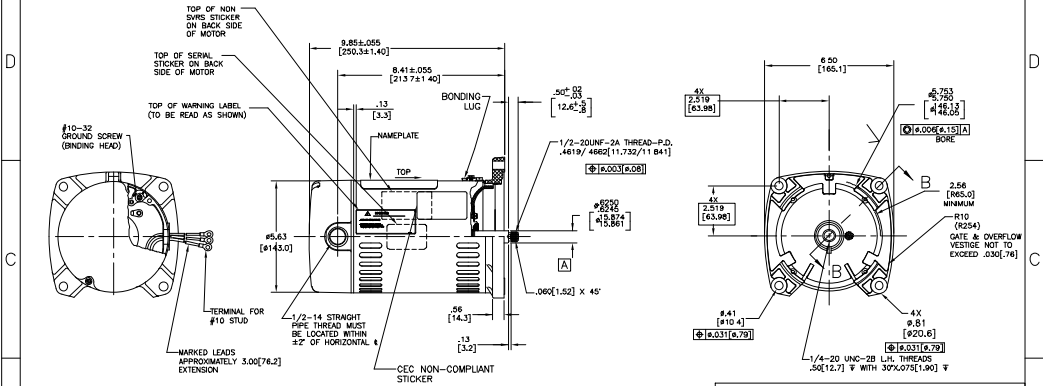
Nameplate Specifications

Output HP	1/2 Hp	Output KW	0.37 kW
Frequency	60 Hz	Voltage	208-230/460 V
Current	3.0/1.5 A	Speed	3450 rpm
Service Factor	1.9	Phase	3
Duty	Continuous	Insulation Class	B
Frame	48Y	Enclosure	Open Drip Proof
Thermal Protection	No Protection	Ambient Temperature	50 °C
UL	No	CSA	Y
Number of Speeds	1		

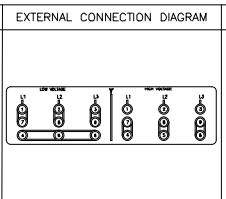
Technical Specifications

Electrical Type	Polyphase	Starting Method	Across The Line
Poles	2	Rotation	Counterclockwise Pump End
Mounting	Round	Motor Orientation	Horizontal
Drive End Bearing	Ball	Opp Drive End Bearing	Ball
Frame Material	Rolled Steel	Shaft Type	1/2 Thread
Overall Length	10.57 in	Frame Length	6.69 in
Shaft Diameter	0.625 in	Shaft Extension	0.906 in
Connection Drawing	614621-002	Outline Drawing	Q3052

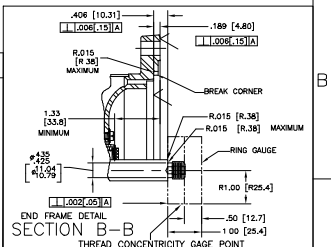
This is an uncontrolled document once printed or downloaded and is subject to change without notice. Date Created:11/28/2022



NAMEPLATE DATA	
MODEL: P48J2EC7A1	
CUST PN: Q3052	
HP: 1/2	SF: 1.9
ROT. COEPE	
RPM: 3450	
TYPE: P	CODE: N
FORM: 48Y	FRAME: 48Y
VOLTS: 208-230/460	
AMPS:	
MAX AMPS: 3.0/1.5	
SF AMPS: -	
PH: 3	HZ: 60
INS: B	AMB: 50°C
DUTY: CONT	
ENCLOSURE: ODP	
THERMALLY PROTECTED: NONE	



- NOTES
1. FINISH PAINT TO BE BLACK LACQUER.
 2. 7/16 WRENCH FLATS ON SHAFT - FOR ACCESS TO THIS WRENCH FLAT REMOVE END COVER
 3. STAINLESS STEEL SHAFT EXTENSION
 4. LIMITS ON AMPLITUDE OF VIBRATION MEASURED AT BEARING HOUSING = .001[.03].



PERFORMANCE CURVE	APPROVED SAMPLE		
P48J2W1			
UL COMPONENT	CSA		
FILE#	CCN#	FILE#	GUIDE#
E46412	PRGY2	LR43341	4211-01
CUSTOMER	DISTRIBUTION SERVICES		

ISSUING REVISION	REVISION BY	DATE	REVISIONS	DATE	REVISIONS	DATE	REVISIONS
1	...	04-29-2019
2	...	04-29-2019

DRAWN BY	DATE	APPROVED BY	DATE	DESCRIPTION	MATERIAL	PROCESS/FINISH
...	04-29-2019	MODEL-PFHP-48FR
...

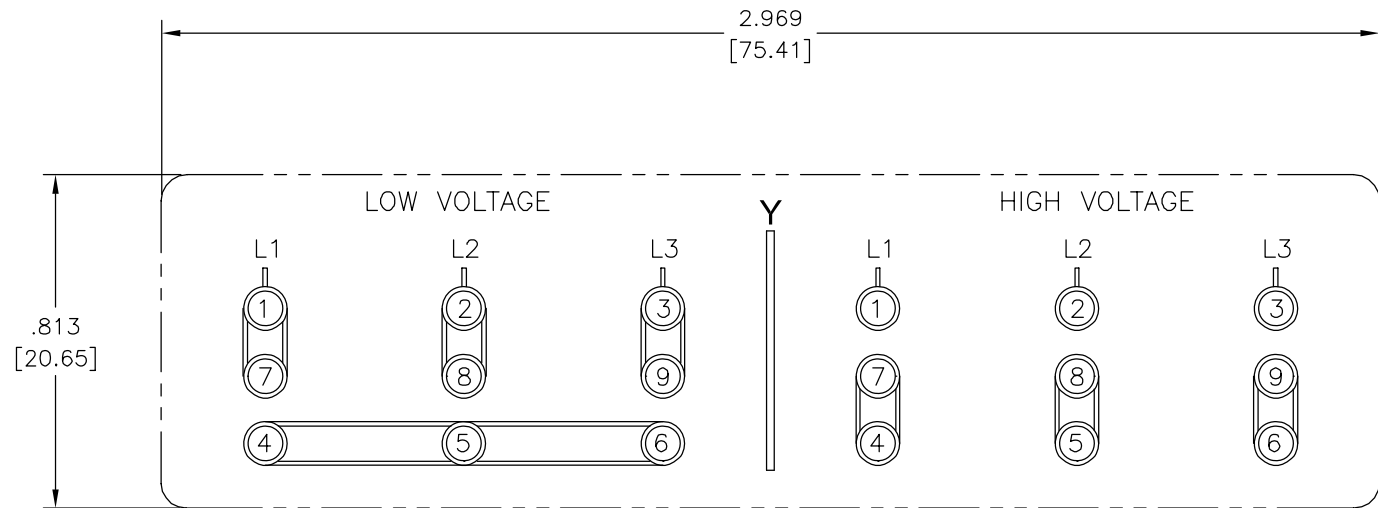
4

3

2

1

REV	ECO	REV BY	DATE	APPD	DATE
B	0025817	Caddie	05-07-2012	Jevon	05-07-2012



NOTES:

1. FOR USE WITH 614620 NAMEPLATE BLANK
2. DIE MUST PRODUCE A LEGIBLE IMPRESSION
3. _____ INDICATES DIMENSIONAL LIMITS. NO BOUNDARY LINES.

<p>GEOMETRIC CHARACTERISTICS & SYMBOLS</p> <ul style="list-style-type: none"> ▭ FLATNESS — STRAIGHTNESS ∠ ANGULARITY ⊥ PERPENDICULARITY (SQUARENESS) // PARALLELISM ○ ROUNDNESS (CIRCULARITY) ⊘ CYLINDRICITY △ PROFILE OF ANY SURFACE ∩ PROFILE OF ANY LINE ↑ RUNOUT ⊕ TRUE POSITION ◎ CONCENTRICITY ≡ SYMMETRY <p>ASME Y14.5M 1994</p>
--

<p>UNLESS OTHERWISE SPECIFIED DIM. TOLERANCES ARE AS FOLLOWS:</p> <p>INCH X XX XXX XXXX mm ±0.5 ±0.13 ±0.013</p> <p>ANG. ±.50 DEG</p> <p>REMOVE BURRS & BREAK SHARP EDGES: INCH .003-.015 mm 0.1-0.4</p> <p>CORNER FILLETS TO: INCH .020 mm 0.5</p> <p>MACHINE SURFACES: INCH 125 mm 3.2</p> <p>METRIC DIMS. SHOWN IN [BRACKETS]</p>
--

DR BY: G.GOLDY	03-08-2002
APPD:	
THIRD ANGLE PROJECTION	EDS DATE 11-11-2011 FORMAT REV G
<p>CONFIDENTIAL: THIS DRAWING AND ITS INFORMATION ARE THE EXCLUSIVE AND CONFIDENTIAL PROPERTY OF REGAL-BELOIT CORPORATION AND ARE NOT TO BE DISCLOSED, DUPLICATED, DISTRIBUTED OR OTHERWISE USED WITHOUT THE WRITTEN CONSENT OF REGAL-BELOIT CORPORATION. -ALL RIGHTS RESERVED.</p>	

DESCRIPTION CONNECTION DIAGRAM-EXTERNAL	
SIZE C	DWG NO 614621-002
SCALE NONE	SHEET 1

4

3

2

1

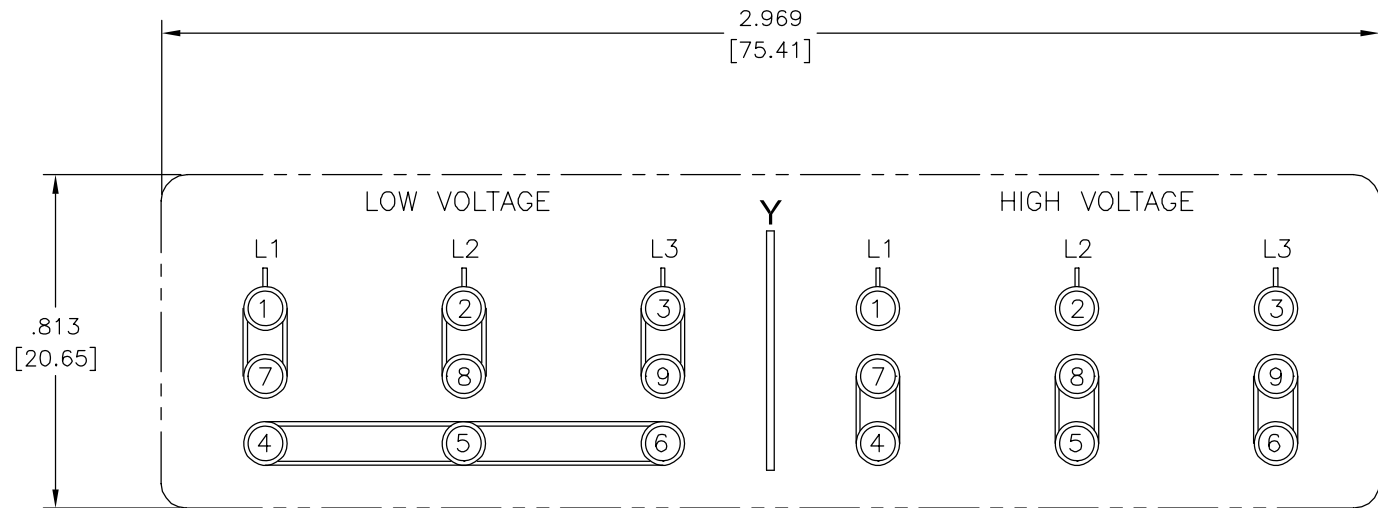
4

3

2

1

REVISION:	ECO	REVISADO POR:	FECHA:	APROBADO POR:	FECHA:
B	0025817	Caddie	05-07-2012	Jevon	05-07-2012



CARACTERISTICAS DE GEOMETRIA Y SIMBOLOS

- ▢ PLANICIDAD
- RECTITUD
- ∠ ANGULARIDAD
- ⊥ PERPENDICULARIDAD (A ESCUADRA)
- // PARALELISMO
- REDONDEZ (CIRCULARIDAD)
- ⊘ CILINDRICIDAD
- △ PERFIL DE CUALQUIER SUPERFICIE
- ∧ PERFIL DE CUALQUIER LINEA
- ↑ VARIACION
- ⊕ POSICION REAL
- ⊙ CONCENTRICIDAD
- = SIMETRIA

A MENOS QUE SE ESPECIFIQUE DE OTRA MANERA, LAS TOLERANCIAS DE LAS DIMS; SON LAS SIGUIENTES:

	X	XX	XXX	XXXX
PULG	±.1	±.02	±.005	±.0005
mm	±0.5	±0.13	±0.013	

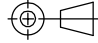
ANG. ± 50 GRADOS
ELIMINAR REBABAS Y ORILLAS FILOSAS DEL BORDE.

PULG	.003-.015	mm	0.1-0.4
------	-----------	----	---------


FILETEAR ESQUINA: PULG .020 mm 0.5
MAQUINAR SUPERFICIES
PULG 125 mm .32

DIMS METRICAS MOSTRADAS [PARENTESIS]

ASME Y14.5M 1994

DIBUJADO POR: G.GOLDY	03-08-2002
APROBADO POR:	
TERCER ANGULO DE PROYECCION	
FECHA EDS: 11-11-2011	REV. FORMATO: G

CONFIDENCIAL: ESTE DIBUJO Y SU INFORMACION SON PROPIEDAD DE USO EXCLUSIVO Y CONFIDENCIAL DE REGAL-BELOIT CORPORATION. Y NO DEBERAN SER REVELADOS, DUPLICADOS, DISTRIBUIDOS O USARSE DE OTRA MANERA SIN EL CONSENTIMIENTO ESCRITO DE REGAL-BELOIT CORPORATION. -TODOS LOS DERECHOS RESERVADOS.

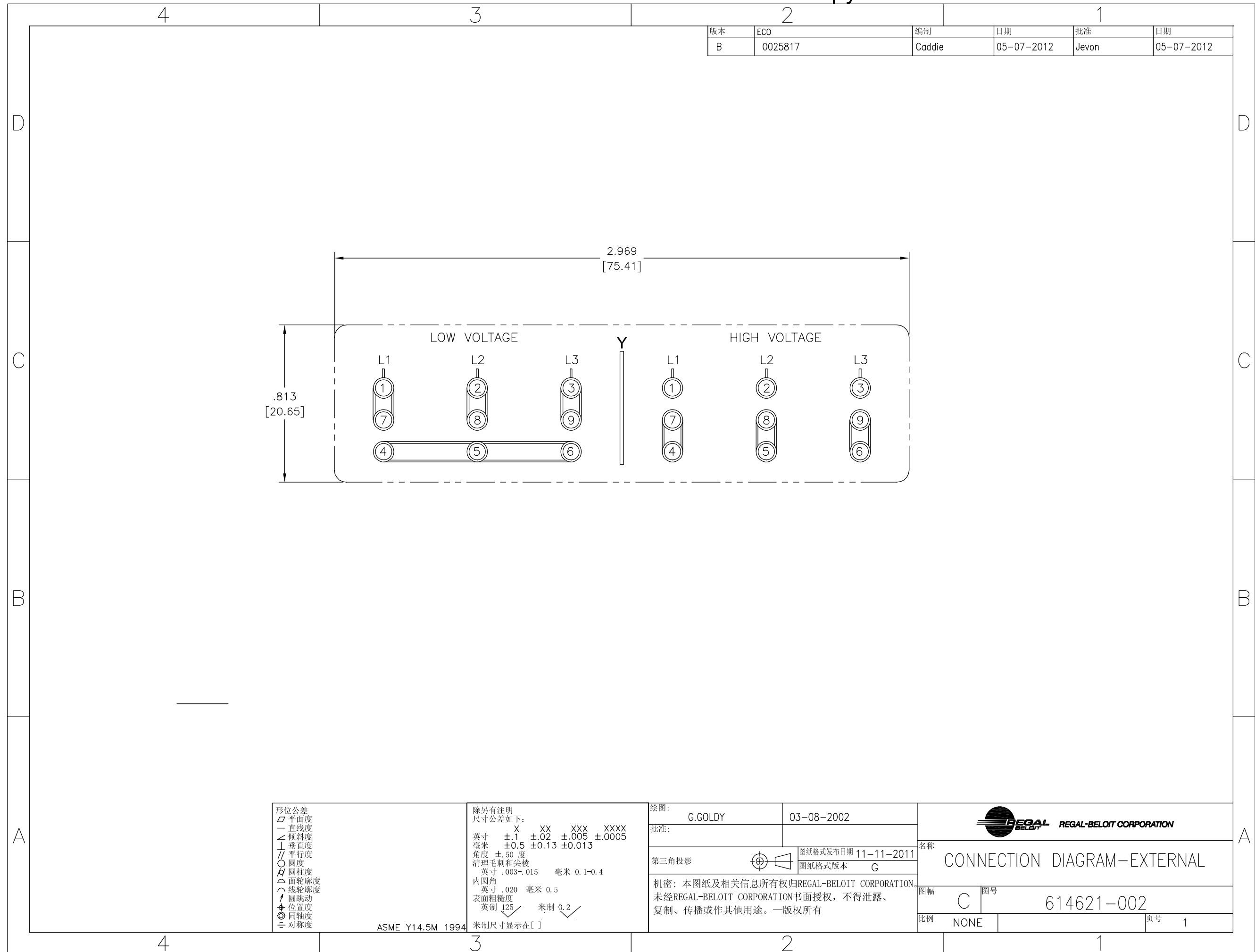
	
DESCRIPCION: CONNECTION DIAGRAM-EXTERNAL	
TAMAÑO: C	NUMERO DE DIBUJO: 614621-002
ESCALA: NONE	HOJA: 1

4

3

2

1



版本	ECO	编制	日期	批准	日期
B	0025817	Caddie	05-07-2012	Jevon	05-07-2012

形位公差	除另有注明 尺寸公差如下:
□ 平面度	英寸 X ±.1 XX ±.02 XXX ±.005 XXXX ±.0005
— 直线度	毫米 ±0.5 ±0.13 ±0.013
∠ 倾斜度	角度 ±.50 度
⊥ 垂直度	清理毛刺和尖棱
// 平行度	英寸 .003-.015 毫米 0.1-0.4
○ 圆度	内圆角
⊙ 圆柱度	英寸 .020 毫米 0.5
△ 面轮廓度	表面粗糙度
∩ 线轮廓度	英制 125 米制 3.2
⤴ 圆跳动	米制尺寸显示在 []
⊕ 位置度	
◎ 同轴度	
≡ 对称度	

ASME Y14.5M 1994

绘图:	G.GOLDY	03-08-2002
批准:		
第三角投影		图纸格式发布日期 11-11-2011 图纸格式版本 G
机密: 本图纸及相关信息所有权归REGAL-BELOIT CORPORATION 未经REGAL-BELOIT CORPORATION书面授权, 不得泄露、 复制、传播或作其他用途。—版权所有		

名称 CONNECTION DIAGRAM-EXTERNAL	
图幅 C	图号 614621-002
比例 NONE	页号 1