

# PRODUCT INFORMATION PACKET



Model No: RF6403  
Catalog No: RF6403

Refrigeration Motor, 1/10 HP, 1 Ph, 60/50 Hz, 115/208-230 V, 1050/900 RPM, 1 Speed, 42 Frame, OPEN



Regal and Century are trademarks of Regal Rexnord Corporation or one of its affiliated companies.  
©2025 Regal Rexnord Corporation, All Rights Reserved. MC017097E





### Nameplate Specifications

Phase	1	Output HP	1/10 Hp
Output KW	0.07 kW	Voltage	115/208-230 V
Speed	1050/900 rpm	Service Factor	1.0
Frame	42Y	Enclosure	Open Enclosed
Thermal Protection	Automatic	Ambient Temperature	40 °C
Frequency	60/50 Hz	Current	4.0/2.0 A
Duty	Air Over	Insulation Class	A
UL	No	CSA	Y
CE	N	Number of Speeds	1

### Technical Specifications

Electrical Type	Shaded Pole	Starting Method	Across The Line
Poles	6	Rotation	Counterclockwise Lead End
Mounting	Extended Studs	Motor Orientation	Any
Drive End Bearing	Sleeve	Opp Drive End Bearing	Sleeve
Frame Material	Na	Shaft Type	Flat
Overall Length	7.17 in	Shaft Diameter	0.375 in
Shaft Extension	2.25 in		
Outline Drawing	RF6403-S01	Connection Drawing	7571A67F01

This is an uncontrolled document once printed or downloaded and is subject to change without notice. Date Created:06/18/2025

GENERAL INFORMATION:

SHAFT RUNOUT: .001[.03] T.I.R. PER INCH LENGTH OF EXTENSION.

END PLAY: .010 TO .063 [.25 TO 1.60]

BEARINGS: SLEEVE

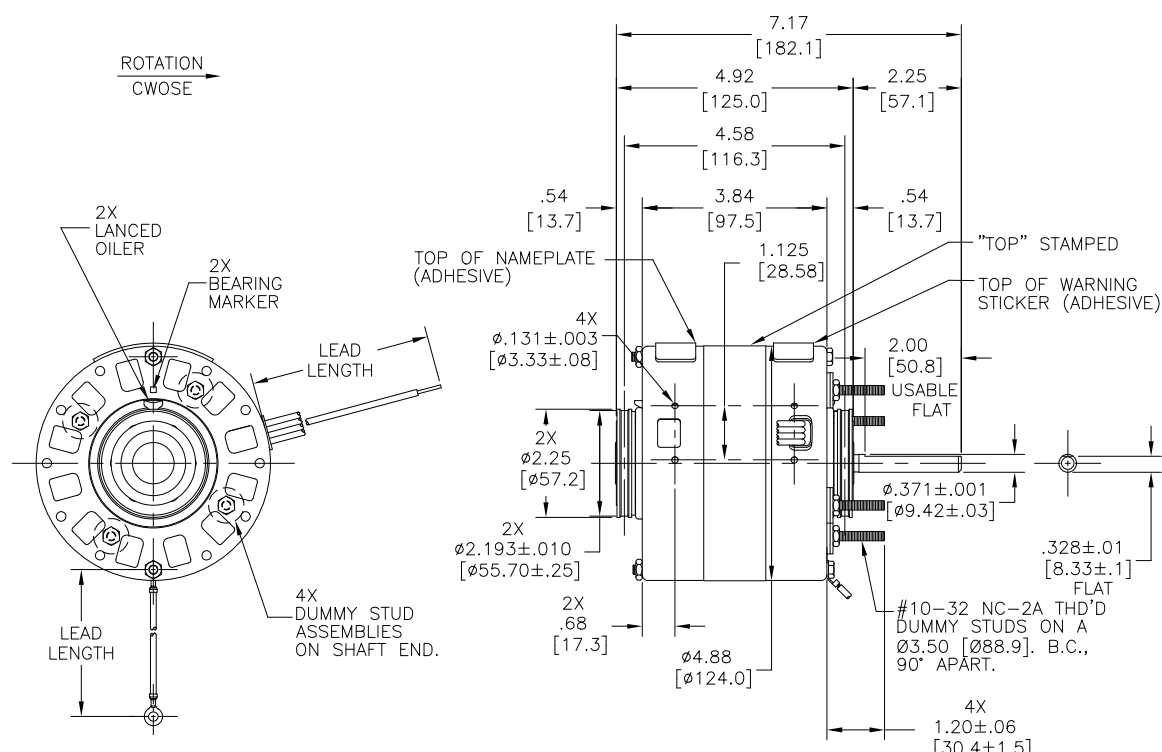
MOUNTING POSITION: ALL ANGLE

ELECTRICAL DATA:

OVERLOAD PROTECTOR: AUTOMATIC RESET (SENSATA 7AM 034)

LINE LEADS: NO. 18 GA, .06 [1.5] THK., 125°C INSUL.

GROUND LEAD: NO. 18 GA, .03 [.8] THK., GREEN INSUL.



- NOTES:
- (1) MTG. BASE
  - (2) MTG. CLAMP ASSEMBLIES
  - (1) SHAFT ADAPTER
  - (4) MTG. RING ADAPTORS
  - (4) HEX NUTS
- TO BE SHIPPED SEPARATELY IN EACH CARTON WITH MOTOR.

NAMEPLATE DATA:	EXTERNAL CONNECTION DIAGRAM
MODEL NO.: 326P192 CUST. P/N: RF6403 HP: 1/10 ROT.: CCWLE RPM: 1050 TYPE: FE FRAME: 42Y VOLTS: 115/208-230 PH: 1 AMPS: 4.0/2.0 HZ: 60/50 INS.: A AMB.: 40° C DUTY: AIR OVER CAP.: - ENCL.: - UL LOGO CSA LOGO THERMALLY PROTECTED TYPE C	

COLOR	LENGTH	TERMINAL OR STRIP LENGTH
GREEN(GRD)	11.5/12.5 [292/318]	#8 EYELET
RED	29/31 [737/787]	.50 [12.7] SKIN
BLUE	29/31 [737/787]	.50 [12.7] SKIN
BLACK	29/31 [737/787]	.50 [12.7] SKIN
YELLOW	29/31 [737/787]	.50 [12.7] SKIN

PERFORMANCE CURVE NO.	TORQUE @ 1050 RPM (25°C)	APPROVED SAMPLE	UL COMPONENT	CSA
			FILE #	CCN #
			FILE #	CLASS #
C30340	10.8 OZ-FT.	89AC117A	E27885	XEWR2
			LR43341	4211-01

MAIN FRAME - OLE	ENCLOSED
END FRAME - OLE	OPEN
MAIN FRAME - LE	ENCLOSED
END FRAME - LE	OPEN

CUSTOMER	DISTRIBUTION SERVICES

DRAWING REVISION	REVISION BY	DATE
ECO	J. RUPERT	05-25-2023
ECO DESCRIPTION	J. RUPERT	05-25-2023
CHANGED UL FILE NUMBER		

COPYRIGHT REGAL BELOIT AMERICA, INC. ALL RIGHTS RESERVED. PROPRIETARY AND CONFIDENTIAL INFORMATION - THIS DOCUMENT IS THE PROPERTY OF REGAL BELOIT AMERICA, INC. (OWNER) AND CONTAINS OWNER'S PROPRIETARY INFORMATION. ANY PERSON, CORPORATION OR OTHER ENTITY, DUPLICATED, AND/OR USED, EXCEPT BY RECEIVING IT, TO AGREE THAT IT, AND/OR ANY PART OF IT, SHALL NOT BE DISCLOSED TO ANY PERSON, CORPORATION OR OTHER ENTITY, DUPLICATED, AND/OR USED, EXCEPT AS EXPRESSLY APPROVED IN WRITING IN ADVANCE BY OWNER. THIS DOCUMENT SHALL BE RETURNED TO OWNER UPON REQUEST. IT MAY BE SUBJECT TO CERTAIN RESTRICTIONS UNDER APPLICABLE EXPORT CONTROL LAWS AND REGULATIONS.

ENCLOSURE		CUSTOMER		DISTRIBUTION SERVICES	
DRAWN BY:	W. CORTEZ	Regal Beloit America, Inc.		MODEL-RFHP-42FR OUTLINE	
DATE:	05-23-2013				
APPROVED BY:	J. DE LUNA	MATERIAL		PROCESS/FINISH	
DATE:	05-23-2013	SIZE		DWG NO	
REFERENCE		C		RF6403	
THIRD ANGLE PROJECTION		SHEET		1	