

PRODUCT INFORMATION PACKET



Model No: SQG1302A
Catalog No: SQG1302A
3.0 HP Pool Pump Motor, 1 phase, 3600 RPM, 208-230 V, 56Y Frame, ODP
Pool Pump Motors

Regal and Century are trademarks of Regal Rexnord Corporation or one of its affiliated companies.
©2021 Regal Rexnord Corporation, All Rights Reserved. MC017097E





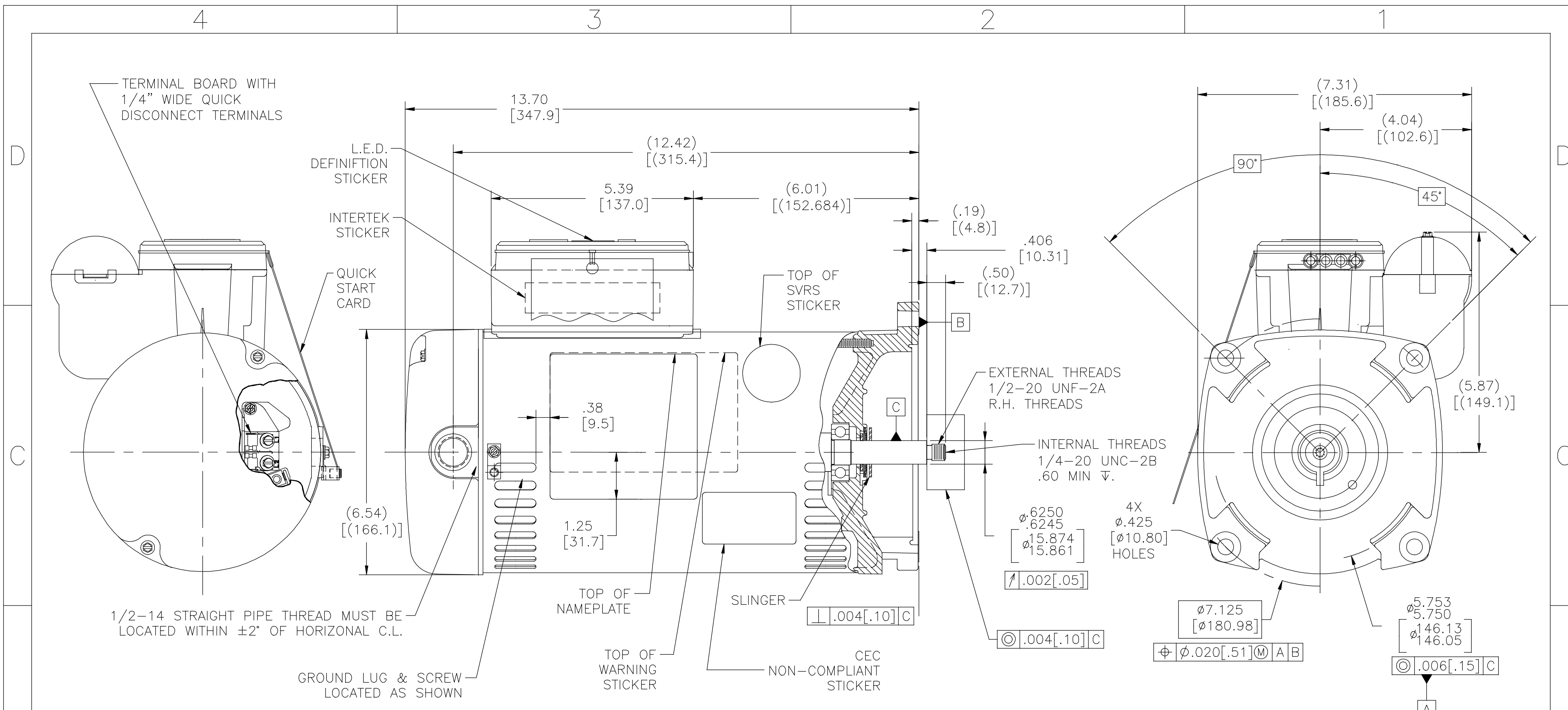
Nameplate Specifications

Output HP	3.0 Hp	Output KW	2.2 kW
Frequency	60 Hz	Voltage	208-230 V
Current	MA 15.0-13.3 A	Speed	3450 rpm
Service Factor	1.15	Phase	1
Duty	Continuous	Insulation Class	B
Frame	Y56Y	Enclosure	Drip Proof
Thermal Protection	Thermally Protected	Ambient Temperature	50 °C
UL	Recognized	CSA	Y

Technical Specifications

Electrical Type	Capacitor Start, Capacitor Run, Single Or Dual Voltage	Poles	2
Rotation	Counterclockwise Pump End	Mounting	Square Flange
Motor Orientation	Horizontal	Drive End Bearing	BALL
Opp Drive End Bearing	BALL	Frame Material	Rolled Steel
Shaft Type	1/2 THREADS	Overall Length	14.42 in
Frame Length	10.00 in	Shaft Diameter	0.625 in
Shaft Extension	0.90 in		
Connection Drawing	D0000112-002	Outline Drawing	SQG1302A-S01

This is an uncontrolled document once printed or downloaded and is subject to change without notice. Date Created:10/07/2021



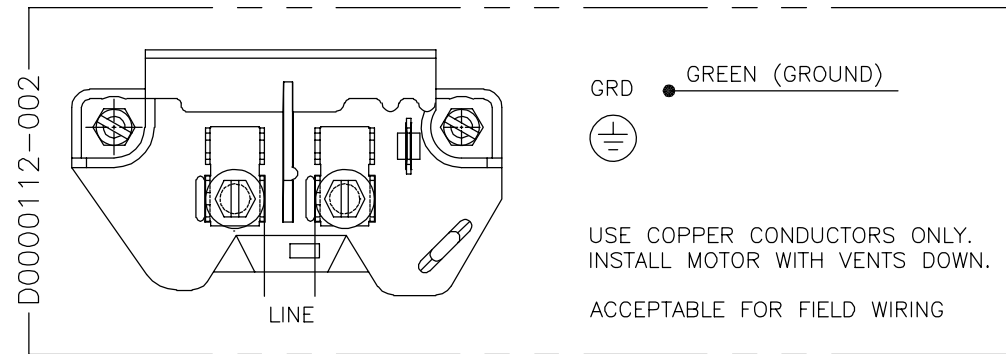
NAMEPLATE DATA		EXTERNAL CONNECTION DIAGRAM	NOTES
MODEL: K56AA57A01 CUST PN: SQG1302A HP: 3.0 SF: 1.15 ROT: CCWPE RPM: 3450 TYPE: CP CODE: G FORM: FRAME: Y56Y VOLTS: 208-230 AMPS: MAX_AMPS: 15.0-13.3 SF_AMPS: - PH: 1 HZ: 60 INS: B AMB: 50°C DUTY: CONT ENCLOSURE: ODP THERMALLY PROTECTED		<p>GRD GREEN (GROUND)</p> <p>USE COPPER CONDUCTORS ONLY. INSTALL MOTOR WITH VENTS DOWN. ACCEPTABLE FOR FIELD WIRING</p>	1. FINISH PAINT TO BE BLACK LACQUER. 2. .44[11.2] WRENCH FLATS ON SHAFT FOR ACCESS TO THIS WRENCH FLAT REMOVE END COVER. 3. STAINLESS STEEL SHAFT 4. LIMITS ON AMPLITUDE OF VIBRATION MEASURED AT BEARING HOUSING=.001.

PERFORMANCE CURVE	APPROVED SAMPLE		
101101011	0603270A		
UL COMPONENT	CSA		
FILE#	CCN#	FILE#	GUIDE#
PENDING	PENDING	PENDING	PENDING
CUSTOMER	DISTRIBUTION SERVICES		

DRAWING REVISION	REVISION BY	DATE	TOLERANCES UNLESS OTHERWISE SPECIFIED	DRAWN BY:	REGAL™ Regal Beloit America, Inc.
F	KHADHAR	11/26/2019	DEC. INCH mm ANGLE	J.HENRY	
ECO	APPROVED BY	DATE	.XX ±0.1 [±2.5] ±0.5°	DATE:	DESCRIPTION
ECO-0177248	D.SURYAWANSHI	11/26/2019	.XX ±0.02 [±0.51]	04-03-2009	
ECO DESCRIPTION			.XXX ±0.005 [±0.127]	APPROVED BY:	OUTLINE
UPDATED UNC THREAD DEPTH			.XXXX ±0.0005 [±0.0127]	DATE:	MATERIAL
<small>COPYRIGHT REGAL BELOIT AMERICA, INC. ALL RIGHTS RESERVED. PROPRIETARY AND CONFIDENTIAL INFORMATION - THIS DOCUMENT IS THE PROPERTY OF REGAL BELOIT AMERICA, INC. (OWNER) AND CONTAINS OWNER'S PROPRIETARY INFORMATION. ANY PERSON, CORPORATION OR OTHER FIRM RECEIVING IT IS DEEMED, BY RECEIVING IT, TO AGREE THAT IT, AND/OR ANY PART OF IT, SHALL NOT BE DISCLOSED TO ANY PERSON, CORPORATION OR OTHER ENTITY, DUPLICATED, AND/OR USED, EXCEPT AS EXPRESSLY APPROVED IN WRITING IN ADVANCE BY OWNER. THIS DOCUMENT SHALL BE RETURNED TO OWNER UPON REQUEST. IT MAY BE SUBJECT TO CERTAIN RESTRICTIONS UNDER APPLICABLE EXPORT CONTROL LAWS AND REGULATIONS.</small>			REMOVE BURRS & BREAK SHARP EDGES .003/.015 [0.076/.381]	REFERENCE	PROCESS/FINISH
			CORNER FILLETS .02 [51]	THIRD ANGLE PROJECTION	SIZE DWG NO
			MACHINED SURFACES 125/INCH 3.2/mm	mm SHOWN IN [BRACKETS]	C SQG1302A
					SHEET 1

4 3 2 1

REV	ECO	REV BY	DATE	APPD	DATE
A	ECO-0037034	Y.LI	08-19-2013	B.SHEN	08-19-2013



230 VOLTAGE-SINGLE SPEED

NOTES:

1. DOTTED BOX REPRESENTS TOTAL PRINTED AREA ALLOWED FOR CONNECTION DIAGRAM TO FIT IN (2.13[54.1] X .75[19.0]). SEE NAMEPLATE DRAWING 170500 OR 17501 FOR LOCATION.
2. CHARACTERS ARE TO BE A MINIMUM OF .03[.8] TO .06[1.5] MAXIMUM IN HEIGHT.
3. DETAILS ARE NOT TO BE COPIED FROM DRAWING, BUT ARE TO BE REPRODUCED FROM ORIGINAL ARTWORK FURNISHED.

GEOMETRIC CHARACTERISTICS & SYMBOLS

- ▭ FLATNESS
 - STRAIGHTNESS
 - ∠ ANGULARITY
 - ⊥ PERPENDICULARITY (SQUARENESS)
 - // PARALLELISM
 - ROUNDNESS (CIRCULARITY)
 - ⊘ CYLINDRICITY
 - △ PROFILE OF ANY SURFACE
 - ∩ PROFILE OF ANY LINE
 - ↗ RUNOUT
 - ⊕ TRUE POSITION
 - ⊙ CONCENTRICITY
 - ≡ SYMMETRY
- ASME Y14.5M 1994

UNLESS OTHERWISE SPECIFIED
DIM. TOLERANCES ARE AS FOLLOWS:

	X	XX	XXX	XXXX
INCH	±.1	±.02	±.005	±.0005
mm	±0.5	±0.13	±0.013	

ANG. ±.50 DEG

REMOVE BURRS & BREAK SHARP EDGES:
INCH .003-.015 mm 0.1-0.4

CORNER FILLETS TO:
INCH .020 mm 0.5

MACHINE SURFACES:
INCH 125 mm 3.2

METRIC DIMS. SHOWN IN [BRACKETS]

DR BY:

Y.LI

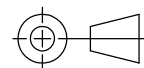
08-19-2013

APPD:

B.SHEN

08-19-2013

THIRD ANGLE PROJECTION



EDS DATE 11-11-2011

FORMAT REV H

CONFIDENTIAL: THIS DRAWING AND ITS INFORMATION ARE THE EXCLUSIVE AND CONFIDENTIAL PROPERTY OF REGAL-BELOIT CORPORATION AND ARE NOT TO BE DISCLOSED, DUPLICATED, DISTRIBUTED OR OTHERWISE USED WITHOUT THE WRITTEN CONSENT OF REGAL-BELOIT CORPORATION. -ALL RIGHTS RESERVED.



DESCRIPTION

CONN DIAGRAM-EXTERNAL

SIZE

B

DWG NO

D0000112-002

SCALE NONE

SHEET 1

4 3 2 1