

PRODUCT INFORMATION PACKET



Model No: USN1252

Catalog No: USN1252

Pool Pump Motor, 2.5 HP, 1 Ph, 60 Hz, 208-230 V, 3600 RPM, Y56J Frame, DP



Regal and Century are trademarks of Regal Rexnord Corporation or one of its affiliated companies.
©2022 Regal Rexnord Corporation, All Rights Reserved. MC017097E





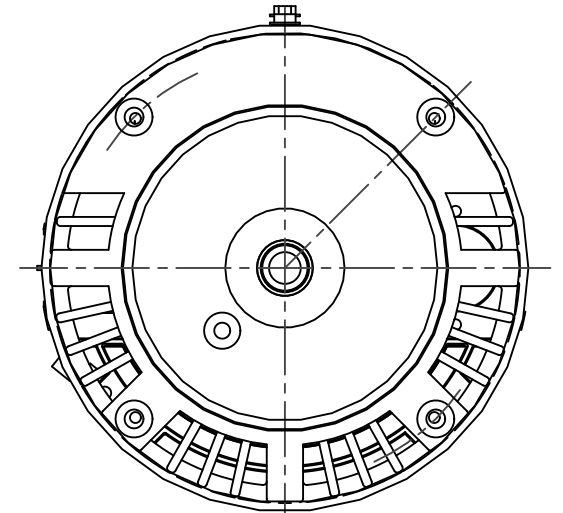
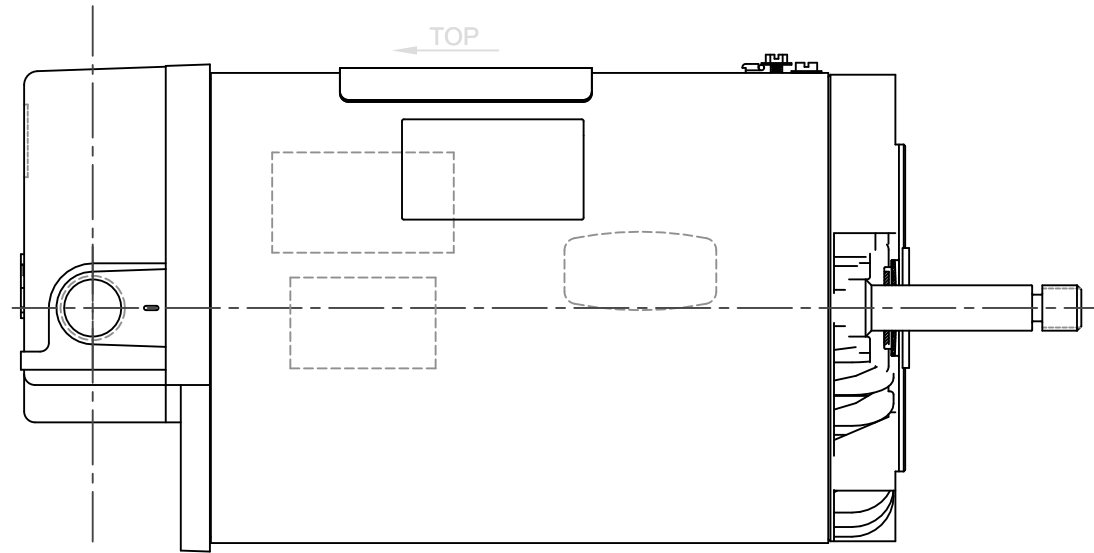
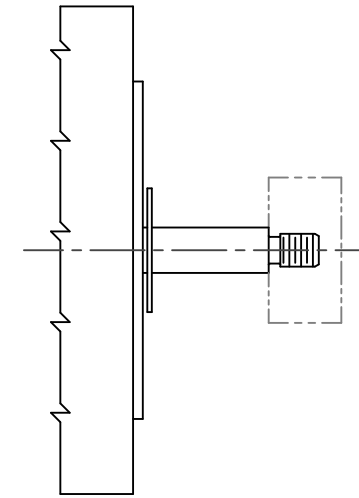
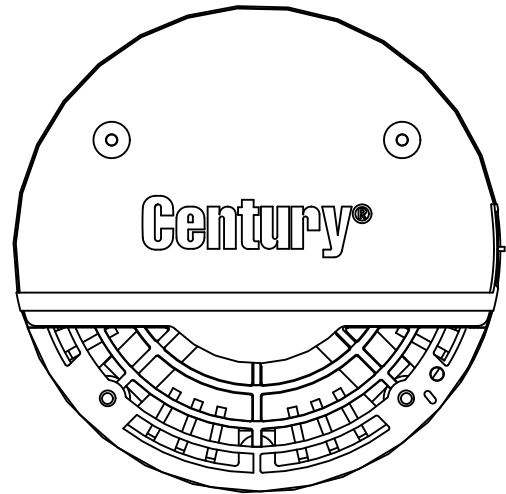
Nameplate Specifications

Output HP	2.5 Hp	Output KW	1.9 kW
Frequency	60 Hz	Voltage	208-230 V
Current	SF 13.0-11.8 A	Speed	3450 rpm
Service Factor	1.1	Phase	1
Duty	Continuous	Insulation Class	B
Frame	Y56J	Enclosure	Drip Proof
Thermal Protection	Thermally Protected	Ambient Temperature	50 °C
UL	Recognized	CSA	Y
Number of Speeds	1		

Technical Specifications

Electrical Type	Permanent Split Capacitor, Single Or Dual Voltage	Starting Method	Across The Line
Poles	2	Rotation	Counterclockwise Pump End
Mounting	Round	Motor Orientation	Horizontal
Drive End Bearing	Ball Brg	Opp Drive End Bearing	Ball
Frame Material	Rolled Steel	Shaft Type	7/16 Thread
Overall Length	14.60 in	Frame Length	8.50 in
Shaft Diameter	0.625 in	Shaft Extension	2.56 in
Outline Drawing	USN1252-S01	Connection Drawing	17050319.PCX

This is an uncontrolled document once printed or downloaded and is subject to change without notice. Date Created:11/28/2022



4

3

2

1

D

D

C

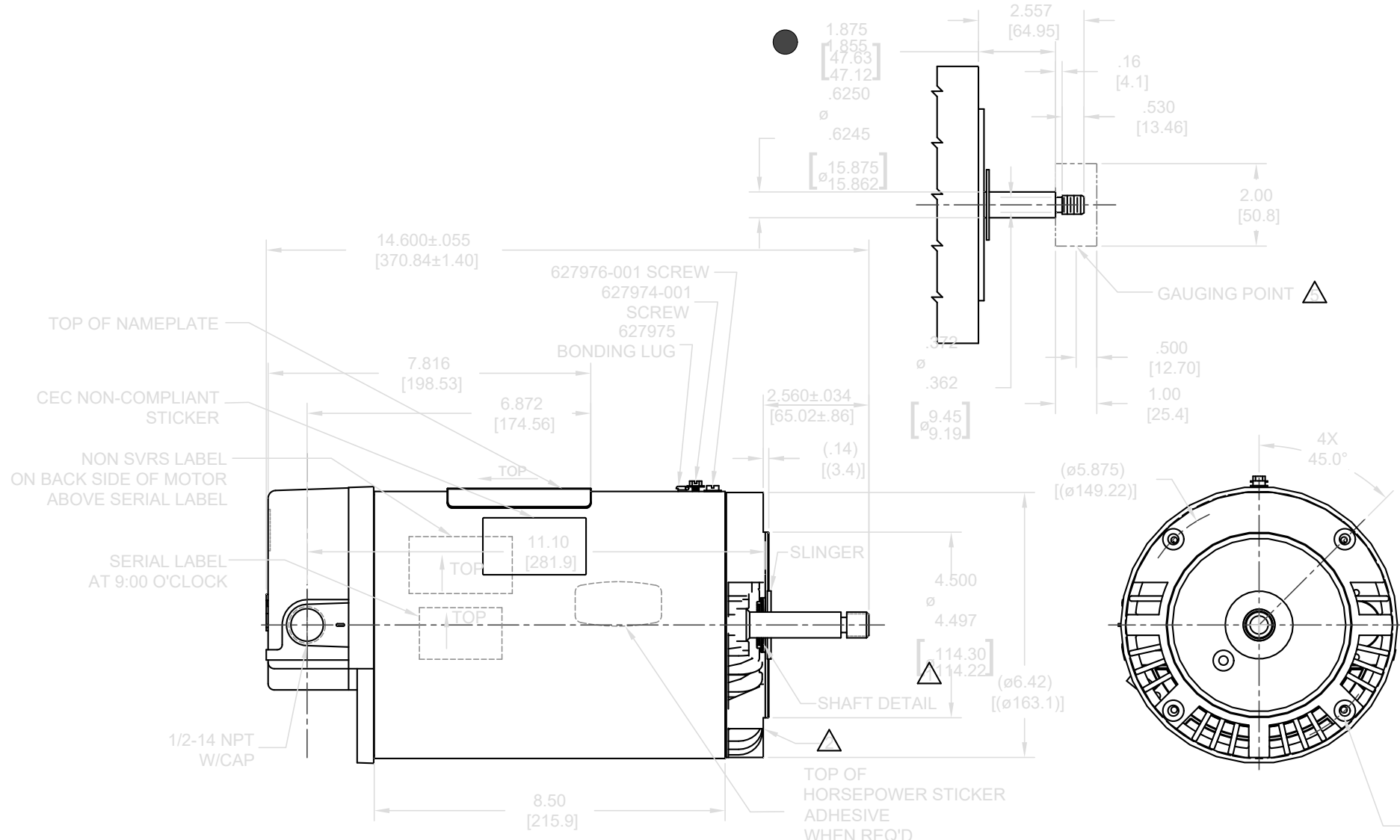
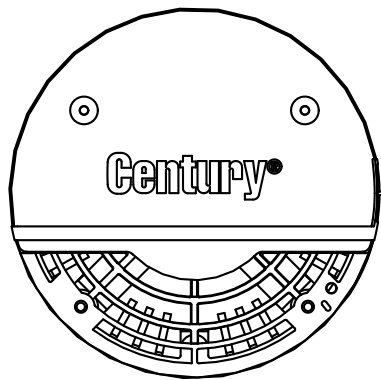
C

B

B

A

A



NAMEPLATE DATA	EXTERNAL CONNECTION DIAGRAM	NOTES
MODEL: 1936890J CUST PN: USN1252 HP: 2.5 SF: 1.10 ROT: CCWPE RPM: 3450 TYPE: CX CODE: D FORM: FRAME: Y 56 J VOLTS: 208-230 AMPS: MAX AMPS: SF AMPS: 13.0-11.8 PH: 1 HZ: 60 INS: B AMB: 50° DUTY: CONT ENCLOSURE: ODP THERMALLY PROTECTED		<ol style="list-style-type: none"> PILOT DIAMETER IS CONCENTRIC WITH SHAFT CENTERLINE WITHIN .004[.10] T.I.R. FACE OF MOUNTING FLANGE IS PERPENDICULAR TO SHAFT CENTERLINE WITHIN .004[.10] T.I.R. SHAFT RUNOUT NOT TO EXCEED .002[.05] T.I.R. FOR THREADED SHAFT EXT. MATING, PARTS SHOULD BE RELIEVED ONE THREAD TO CLEAR FILLET. FOR THREADED SHAFT EXT. ECCENTRICITY OF THREADED PORTION OF SHAFT IS HELD WITHIN .004[.10] TOTAL GAUGE READING WITH THE INDICATOR ON O.D. OF GROUND RING GAGE AS SHOWN. THE GAGE BEING STATIONARY WITH RESPECT TO THE ROTOR. END PLAY NOT TO EXCEED .010[.25] MEASURED WITH NO THRUST. FRONT END FRAME TO BE ALIGNED WITH BACK END FRAME TO WITHIN ±1° RADIAL ALIGNMENT ±.060[±1.52] CRITICAL DIMENSION

PERFORMANCE CURVE	APPROVED SAMPLE		
19238111			
UL COMPONENT	CSA		
FILE#	CCN#	FILE#	GUIDE#
PENDING	PENDING	PENDING	PENDING
CUSTOMER	DISTRIBUTION		

DRAWING REVISION D	REVISION BY SHESHI	DATE 12/29/2020	TOLERANCES UNLESS OTHERWISE SPECIFIED DEC. INCH mm ANGLE XX ±0.1 [±2.5] ±0.5° XXX ±0.02 [±0.51] XXXX ±0.005 [±0.127] REMOVE BURRS & BREAK SHARP EDGES .003/.015 [0.076/.381] X 45° CORNER FILLETS R.02 [.51] MACHINED SURFACES INCH mm mm SHOWN IN [BRACKETS]	DRAWN BY TH	REGAL™ Regal Beloit America, Inc.
ECR-0203536	APPROVED BY D.SURYAWANSHI	DATE 12/29/2020		DATE 10-27-2010	DESCRIPTION MODEL-PFHP-56FR
ECC DESCRIPTION SEE ECR				APPROVED BY TZ	OUTLINE
COPYRIGHT REGAL BELOIT AMERICA, INC. ALL RIGHTS RESERVED. PROPRIETARY AND CONFIDENTIAL INFORMATION - THIS DOCUMENT IS THE PROPERTY OF REGAL BELOIT AMERICA, INC. FORMERLY AND CONTAINS OWNERS PROPRIETARY INFORMATION. ANY PERSON, CORPORATION OR OTHER FIRM RECEIVING IT IS DEEMED BY RECEIVING IT TO AGREE THAT IT, AND/OR ANY PART OF IT, SHALL NOT BE DISCLOSED TO ANY PERSON, CORPORATION OR OTHER ENTITY, DUPLICATED, AND/OR USED, EXCEPT AS EXPRESSLY APPROVED IN WRITING IN ADVANCE BY OWNER. THIS DOCUMENT SHALL BE RETURNED TO OWNER UPON REQUEST. IT MAY BE SUBJECT TO CERTAIN RESTRICTIONS UNDER APPLICABLE EXPORT CONTROL LAWS AND REGULATIONS.				DATE 10-27-2010	MATERIAL
				REFERENCE	PROCESS/FINISH
				THIRD ANGLE PROJECTION	SIZE DWG NO C USN1252
					SHEET 1

4

3

2

1