

PRODUCT INFORMATION PACKET



Model No: 108266.00
Catalog No: 108266.00
SCR Motor, 2 HP, 180 V, 2500 RPM, S56CZ Frame, TEFC



Regal and Leeson are trademarks of Regal Rexnord Corporation or one of its affiliated companies.
©2023 Regal Rexnord Corporation, All Rights Reserved. MC017097E





Nameplate Specifications

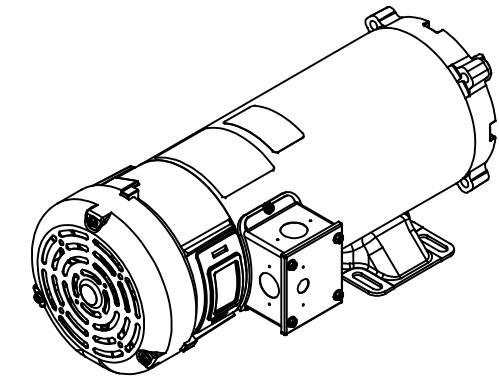
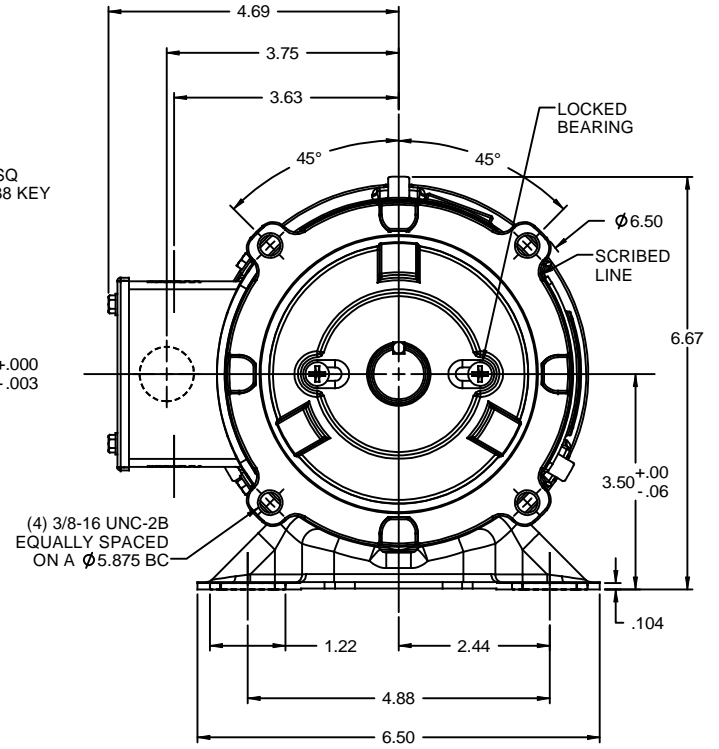
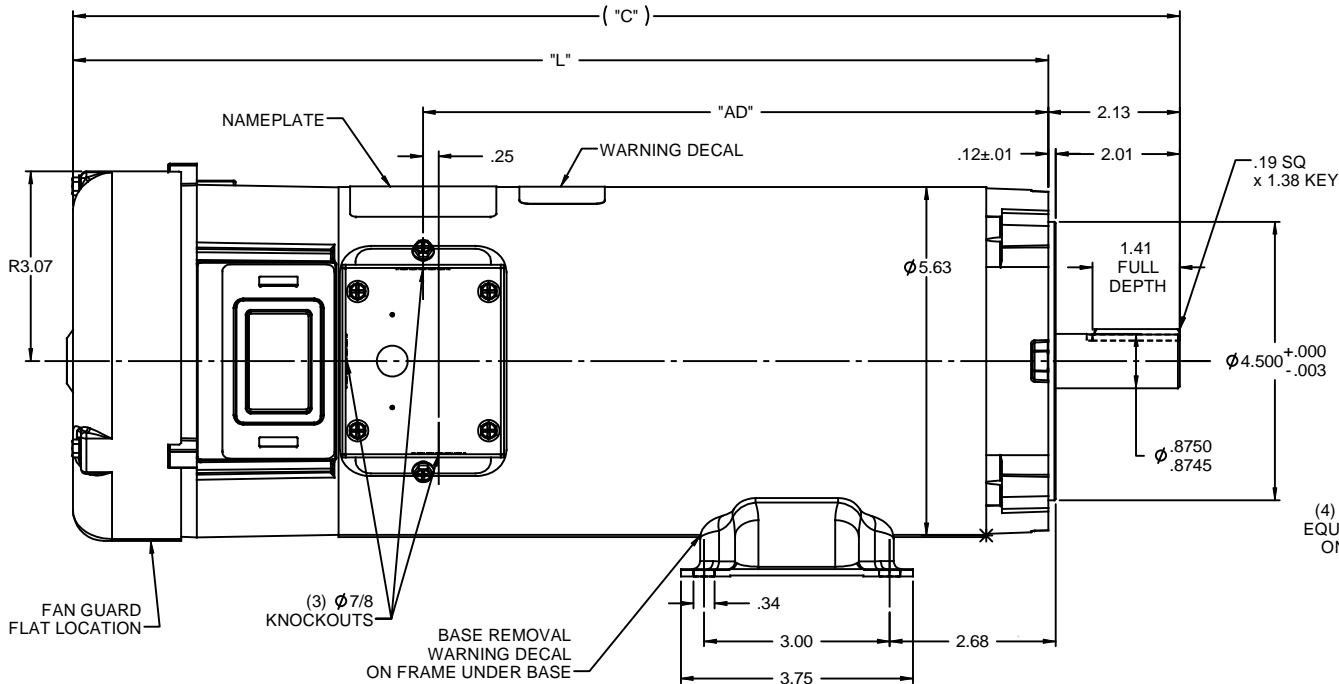
Output HP	2 Hp	Output KW	1.5 kW
Voltage	180 V	Current	8.6 A
Speed	2500 rpm	Service Factor	1
Efficiency	88.1 %	Duty	Continuous
Insulation Class	F	Frame	S56CZ
Enclosure	Totally Enclosed Fan Cooled	Thermal Protection	No Protection
Ambient Temperature	40 °C	Drive End Bearing Size	6205
Opp Drive End Bearing Size	6203	UL	Recognized
CSA	Y	CE	N

Technical Specifications

Rotation	Reversible	Mounting	Rigid C base
Overall Length	17.89 in	Frame Length	10.47 in
Shaft Diameter	0.875 in	Shaft Extension	2.13 in
Torque	50.4 LB-IN		
Outline Drawing	031897-108266	Connection Drawing	00531901

This is an uncontrolled document once printed or downloaded and is subject to change without notice. Date Created:01/30/2023

RBC PROPRIETARY AND CONFIDENTIAL INFORMATION
 This document is the property of REGAL BELOIT CORPORATION ("RBC") including its subsidiaries and divisions and contains proprietary information of RBC. This document is loaned on the express condition that neither it nor the information contained therein shall be disclosed to others without the express written consent of RBC, and that the information shall be used by the recipient only as approved expressly by RBC. This document shall be returned to RBC upon its request. This document may be subject to certain restrictions under U.S. export control laws and regulations.

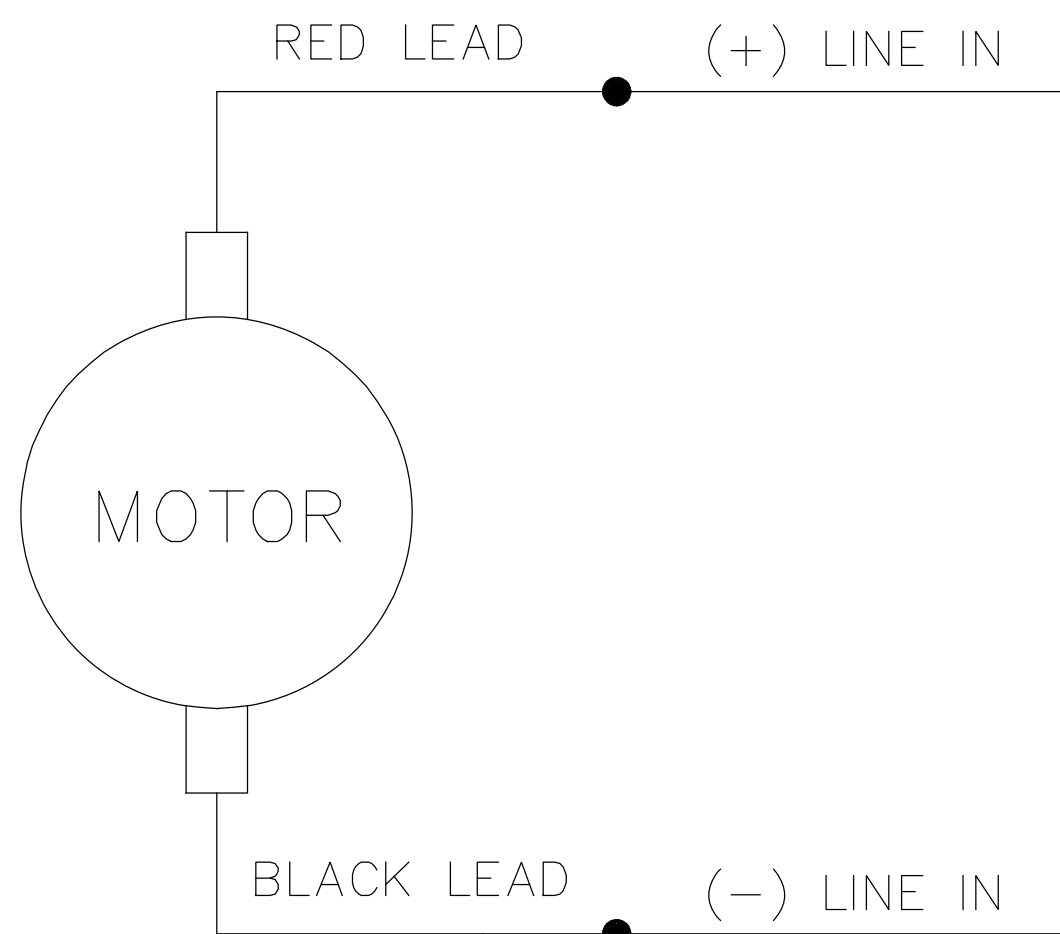


108266.00	17.89	15.76	10.10	180	2	2500
108262.00	17.39	15.26	9.60	180	1 1/2	1750
CATALOG No.	"C"	"L"	"AD"	VOLTS	H.P.	RPM

- NOTES:
 1) MAXIMUM FACE RUNOUT .004 T.I.R.
 2) MAXIMUM PILOT ECCENTRICITY .004 T.I.R.
 3) PERMISSIBLE SHAFT RUNOUT .002 T.I.R.
 4) GASKETS THROUGHOUT.

					TOLERANCES UNLESS SPECIFIED	LEESON ELECTRIC MOTORS GEARMOTORS AND DRIVES	DRAWN IPG 4/8/08
02	ADDED NOTE ABOUT FAN GUARD FLAT LOCATION. ISAAC	IPG	12/9/2009	DEC	INCHES		CHK BC 4/8/08
	09-4813			X	±.1	APPR	
01	CAT. # 108262.00: "C" WAS 17.89, "L" WAS 15.76, "AD" WAS 10.10, ISAAC 09-1828	IPG	5/14/2009	SK	.XX ±.03	TITLE OUTLINE	SCALE 1:2
	RELEASED: REF. 031879 & 030704	IPG	4/8/2008	BC	.XXX ±.005	48 FRAME DC - S56CZ MOUNT	REF 031879
				CHK	.XXX ±.0005	MATL	FMF 108262.75
NO	REVISION	BY & DATE		CHK	ANG ±1/2°	FINISH	PAGE OF
	THIRD ANGLE PROJECTION			RFP		PREV	SIZE DRAWING NO
					NETWORK FILE NAME		B 031897
							REV 02

005319.01



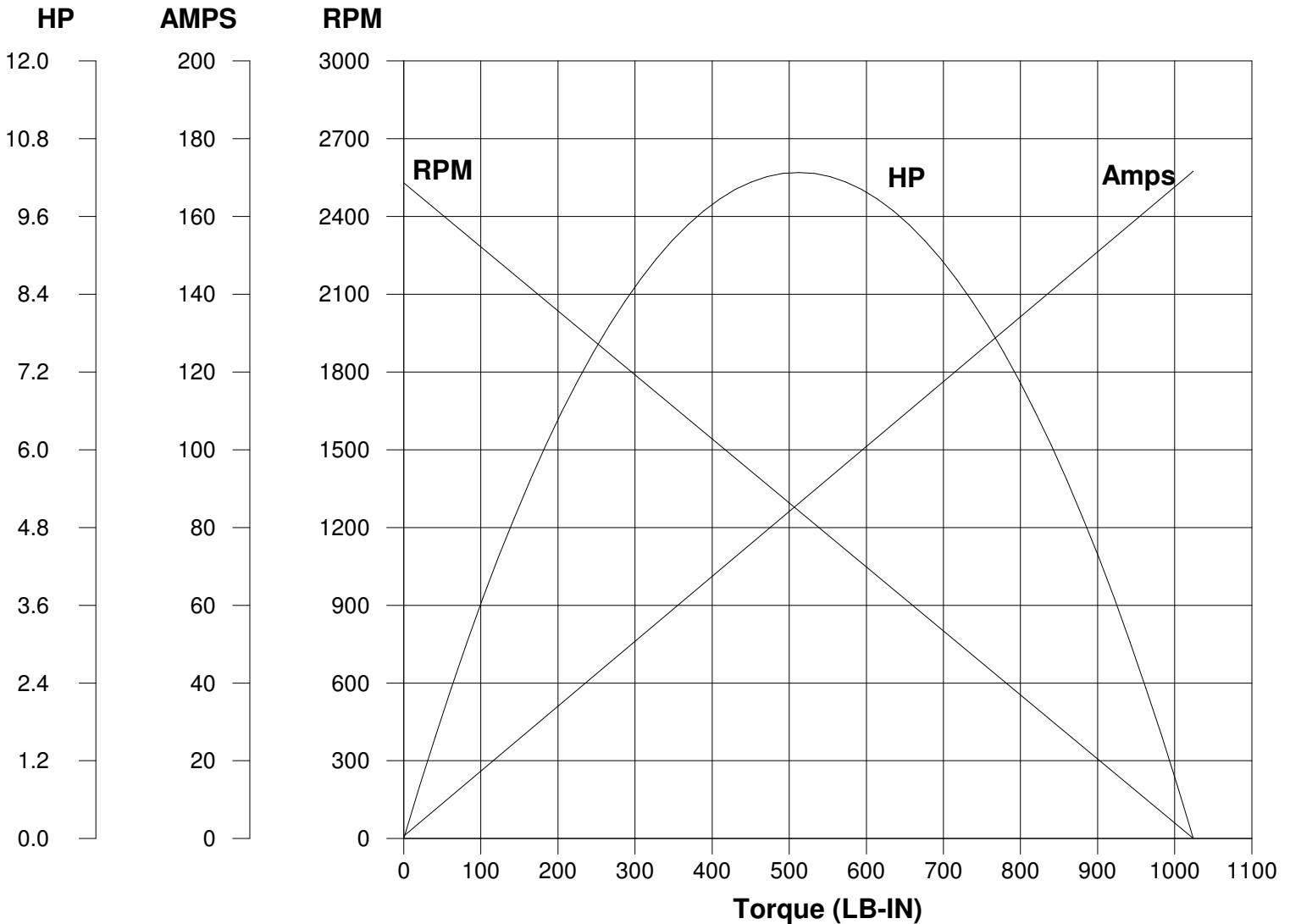
CONNECTIONS SHOWN FOR CCW ROTATION FACING LEAD END OF THE MOTOR
TO REVERSE ROTATION INTERCHANGE LINE LEADS

NO.	REVISION	BY & DATE	CHK	TOLERANCES UNLESS SPECIFIED		LEESON	ELECTRIC MOTORS GEARMOTORS AND DRIVES	DRAWN TJF 11/15/97	
				DEC.	INCHES				CHK
				.X	±.1			APPD POW 11/15/97	
E	"MOTOR" WAS "ARMATURE", ECO-0163602	IPG 3/14/19		.XX	±.01	TITLE	EXTERNAL WIRING DIAGRAM PMDC MOTOR	SCALE 1=2	
D	UPDATED TO MAKE IT GENERIC, ECO-0163547	IPG 3/13/19		.XXX	±.005			REF	
01	REDRAWN ON CAD. REVISED NOTES.	SJB 9/20/2005		.XXXX	±.0005	MAT'L.		FMF	
				ANG	±1/2°	FINISH		PREV	
THIS DRAWING IN DESIGN AND DETAIL IS OUR PROPERTY AND MUST NOT BE USED EXCEPT IN CONNECTION WITH OUR WORK ALL RIGHTS OF DESIGN AND INVENTION ARE RESERVED THIS IS AN ELECTRONICALLY GENERATED DOCUMENT - DO NOT SCALE THIS PRINT				RFP	CAD FILE 00531901		SIZE A	DRAWING NO. 005319.01	REV. E
				DIST					

LEESON ELECTRIC CORPORATION

TYPICAL PERFORMANCE CURVE FOR DIRECT CURRENT PERMANENT MAGNET MOTOR

Model No. <u>C4D28FK12</u>	Catalog No. <u>108266.00</u>	
HP <u>2.000</u>	RPM <u>2500</u>	DC Volts <u>180.0</u>
F.F. <u>1.38</u>	Encl <u>TEFC</u>	Type <u>DF</u>
Max. Amb. <u>40.0 Deg C</u>	Insul. <u>F</u>	Frame <u>S56CZ</u>
		N.P. FLA <u>8.60</u>
		S.F. <u>1.00</u>
		Duty <u>Cont</u>



Ra <u>0.6200</u> Ohms La <u>9.500</u> mHenrys Ja <u>22.40</u> LB-IN ² Ke <u>70.89</u> V/KRPM	Kt <u>5.992</u> LB-IN/AMP Imax <u>103.1</u> AMPS Allowed FL Torque <u>50.40</u> LB-IN FL EFF <u>88.10</u> %
--	--

Winding W- D56233-1 Prepared by S. Bernhardt Date 05-14-2009