

PRODUCT INFORMATION PACKET

Model No: 128000.00

Catalog No: 128000.00

SCR Motor, 1.50 HP, 180 V, 1750 RPM, H145TC Frame, TEFC



Regal and are trademarks of Regal Rexnord Corporation or one of its affiliated companies.
©2022 Regal Rexnord Corporation, All Rights Reserved. MC017097E

Nameplate Specifications

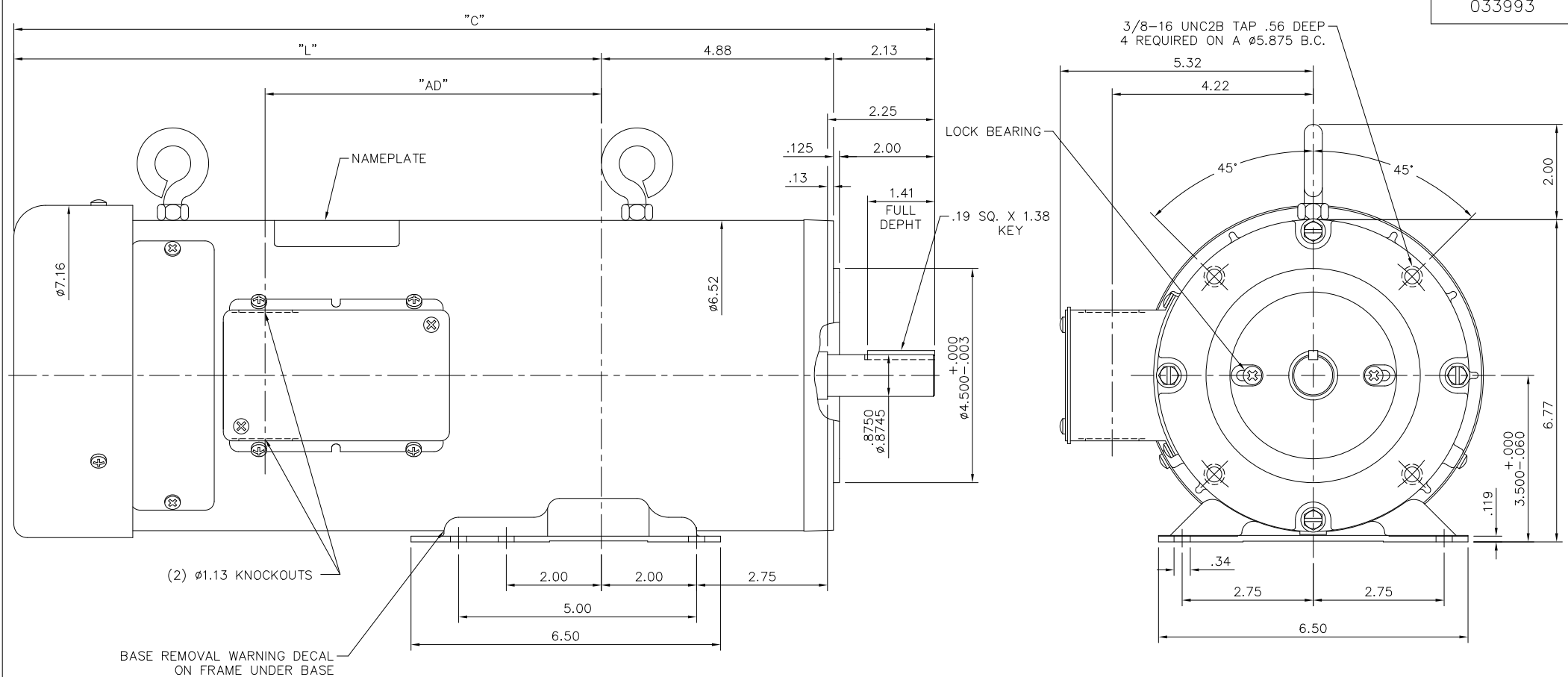
Output HP	1.50 Hp	Output KW	1.1 kW
Voltage	180 V	Current	7.5 A
Speed	1750 rpm	Service Factor	1
Efficiency	79.3 %	Duty	Continuous
Insulation Class	H	Frame	H145TC
Enclosure	Totally Enclosed Fan Cooled	Thermal Protection	No Protection
Ambient Temperature	40 °C	Drive End Bearing Size	6205
Opp Drive End Bearing Size	6203	UL	Recognized
CSA	Y	CE	N

Technical Specifications

Rotation	Reversible	Mounting	Rigid C base
Overall Length	18.34 in	Frame Length	13.63 in
Shaft Diameter	0.875 in	Shaft Extension	2.13 in
Torque	54 LB-IN		
Outline Drawing	033993-H140	Connection Drawing	00531901


This is an uncontrolled document once printed or downloaded and is subject to change without notice. Date Created:09/19/2022

033993

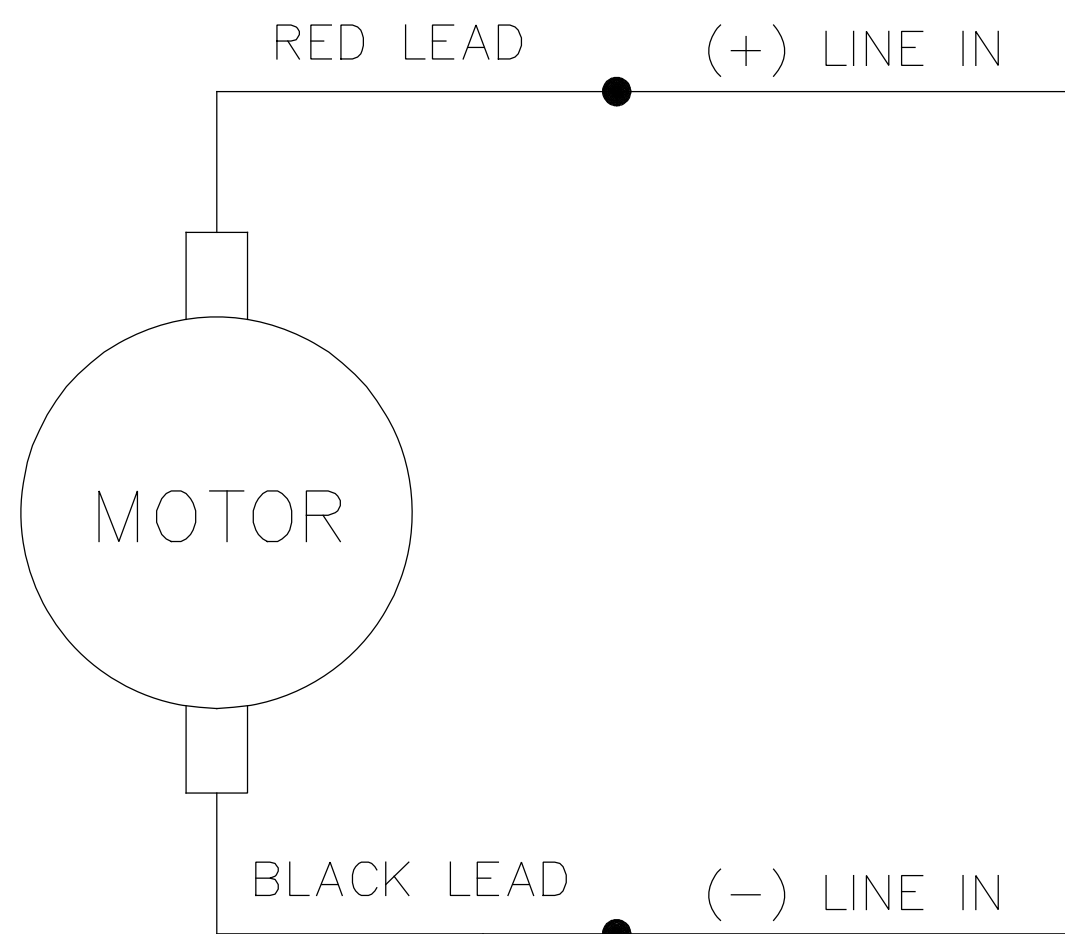


- NOTES:
1. MAXIMUM FACE RUNOUT TO BE .004 T.I.R.
 2. MAXIMUM PILOT ECCENTRICITY .004 T.I.R
 3. PERMISSIBLE SHAFT RUNOUT .002 T.I.R.
 4. GASKETS THROUGHOUT.

J140	18.84	11.84	6.56	T140	22.34	15.34	10.06
H140	18.34	11.34	6.06	R140	21.84	14.84	9.56
G140	17.84	10.84	5.56	P140	21.34	14.34	9.06
F140	17.34	10.34	5.06	N140	20.84	13.84	8.56
E140	16.84	9.84	4.56	M140	20.34	13.34	8.06
D140	16.34	9.34	4.06	L140	19.84	12.84	7.56
C140	15.84	8.84	3.56	K140	19.34	12.34	7.06
FRAME	"C"	"L"	"AD"	FRAME	"C"	"L"	"AD"

		TOLERANCES UNLESS SPECIFIED		 ELECTRIC MOTORS GEARMOTORS AND DRIVES		DRAWN PG 9/12/91	
		DEC.	INCHES			CHK	
		.X	±.1			APPD JCW 9/12/91	
		.XX	±.03	TITLE		SCALE 1=2	
		.XXX	±.005	56 FRAME DC - 140TC FACE AND BASE		REF 033945	
C		CHANGED TO MYLAR NAMEPLATE, ECR-0217487	IPG 5/4/22	MAT'L		FMF C145D17FK3	
NO.	REVISION	BY & DATE	CHK	ANG	FINISH	PREV	
THIS DRAWING IN DESIGN AND DETAIL IS OUR PROPERTY AND MUST NOT BE USED EXCEPT IN CONNECTION WITH OUR WORK ALL RIGHTS OF DESIGN AND INVENTION ARE RESERVED THIS IS AN ELECTRONICALLY GENERATED DOCUMENT - DO NOT SCALE THIS PRINT				RFP	CAD FILE	033993	SIZE B
				DIST	DRAWING NO. 033993		REV. C

005319.01



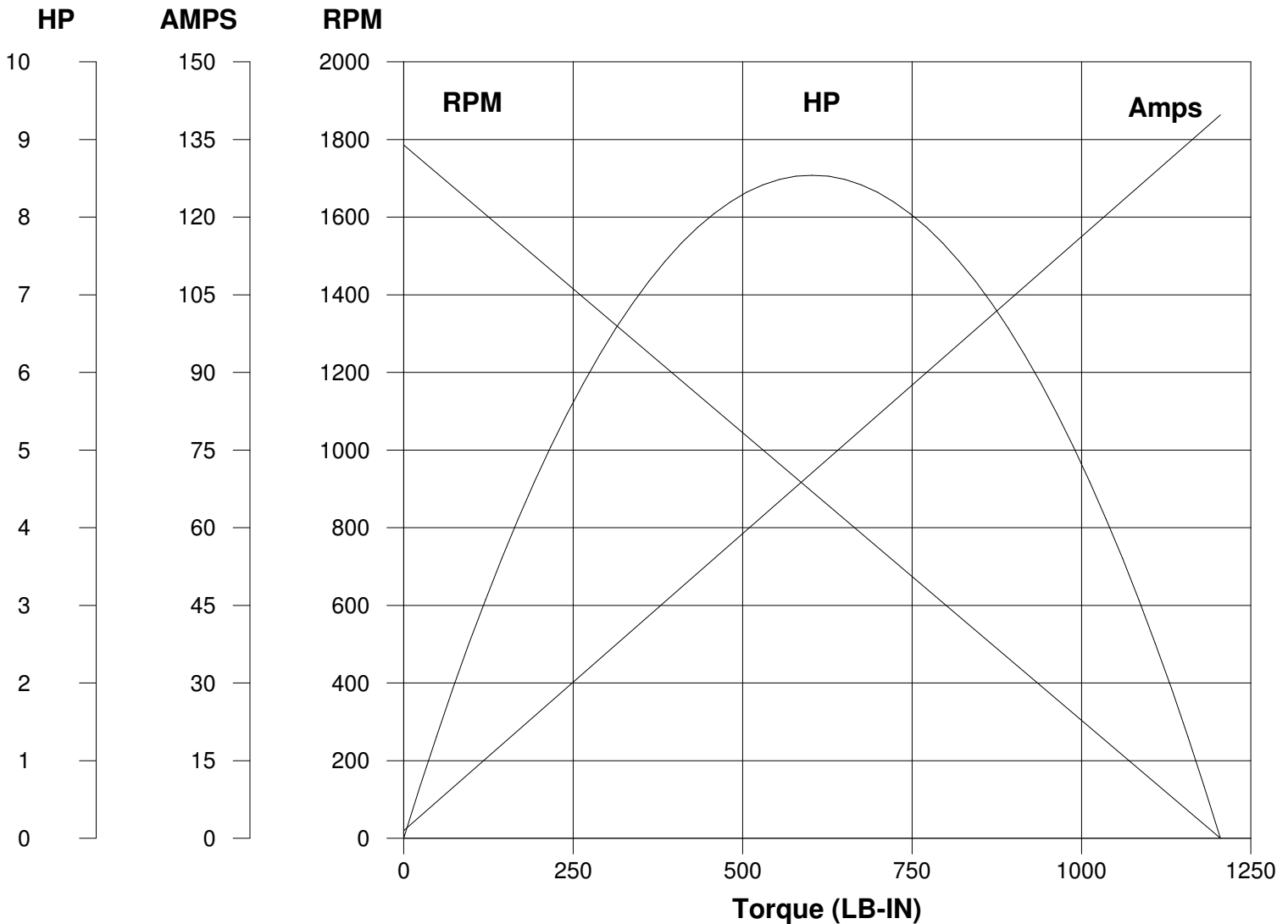
CONNECTIONS SHOWN FOR CCW ROTATION FACING LEAD END OF THE MOTOR
TO REVERSE ROTATION INTERCHANGE LINE LEADS

NO.	REVISION	BY & DATE	CHK	TOLERANCES UNLESS SPECIFIED		LEESON	ELECTRIC MOTORS GEARMOTORS AND DRIVES	DRAWN TJF 11/15/97	
				DEC.	INCHES				CHK
				.X	±.1			APPD POW 11/15/97	
E	"MOTOR" WAS "ARMATURE", ECO-0163602	IPG 3/14/19		.XX	±.01	TITLE	EXTERNAL WIRING DIAGRAM PMDC MOTOR	SCALE 1=2	
D	UPDATED TO MAKE IT GENERIC, ECO-0163547	IPG 3/13/19		.XXX	±.005			REF	
01	REDRAWN ON CAD. REVISED NOTES.	SJB 9/20/2005		.XXXX	±.0005	MAT'L.		FMF	
				ANG	±1/2°	FINISH		PREV	
THIS DRAWING IN DESIGN AND DETAIL IS OUR PROPERTY AND MUST NOT BE USED EXCEPT IN CONNECTION WITH OUR WORK ALL RIGHTS OF DESIGN AND INVENTION ARE RESERVED THIS IS AN ELECTRONICALLY GENERATED DOCUMENT - DO NOT SCALE THIS PRINT				RFP	CAD FILE 00531901		SIZE	DRAWING NO.	REV.
				DIST			A	005319.01	E

LEESON ELECTRIC CORPORATION

TYPICAL PERFORMANCE CURVE FOR DIRECT CURRENT PERMANENT MAGNET MOTOR

Model No. C145D17FK2 **Catalog No.** 128000.00
HP 1.500 **RPM** 1750 **DC Volts** 180.0 **N.P. FLA** 7.50
F.F. 1.40 **Encl** TEFC **Type** DF **S.F.** 1.00
Max. Amb. 40.0 Deg C **Insul.** H **Frame** H145TC **Duty** Cont



Ra 0.6660 Ohms
La 12.20 mHenrys
Ja 22.98 LB-IN²
Ke 101.1 V/KRPM

Kt 8.542 LB-IN/AMP
Imax 71.0 AMPS Allowed
FL Torque 54.00 LB-IN
FL EFF 79.30 %

Winding W- D6323-1 **Prepared by** V. Boehlen **Date** 05-02-2005